

Supplementary Material

Investigation of catalytic activation of peroxydisulfate on Cu-doped mesoporous silica-based particles (Cu-BMS) for efficient degradation of Methylene Blue

Saeed Sajjadi,^{1,*} Akrity Anand,¹ Ana M. Beltrán,² Dana Dvoranová,³ Aldo R. Boccaccini,⁴
Dagmar Galusková,¹ David Jaška,⁵ Róbert Klement ^{1,**}

¹ *Centre for Functional and Surface Functionalized Glass, Alexander Dubček University of Trenčín, Trenčín, 911 50, Slovakia*

² *Departamento de Ingeniería y Ciencia de Los Materiales y Del Transporte, Universidad de Sevilla, Escuela Politécnica Superior, Virgen de África 7, Seville, 41011, Spain*

³ *Institute of Physical Chemistry and Chemical Physics, Faculty of Chemical and Food Technology, Slovak University of Technology in Bratislava, Radlinského 9, Bratislava, SK-812 37, Slovakia*

⁴ *Institute of Biomaterials, University of Erlangen-Nuremberg, Erlangen, 91058, Germany*

⁵ *Department of Polymer Engineering, Faculty of Technology, Tomas Bata University in Zlín, Vavrečkova 5669, 760 01 Zlín, Czech Republic*

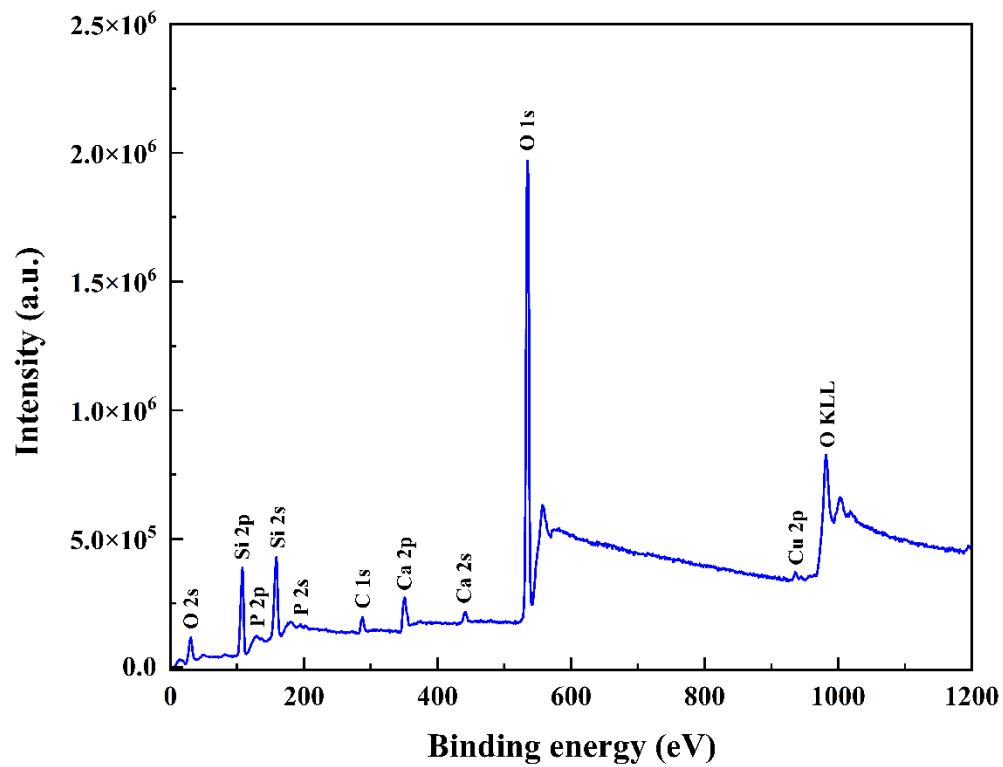


Fig. S1. The XPS survey spectrum of Cu-BMS particles.

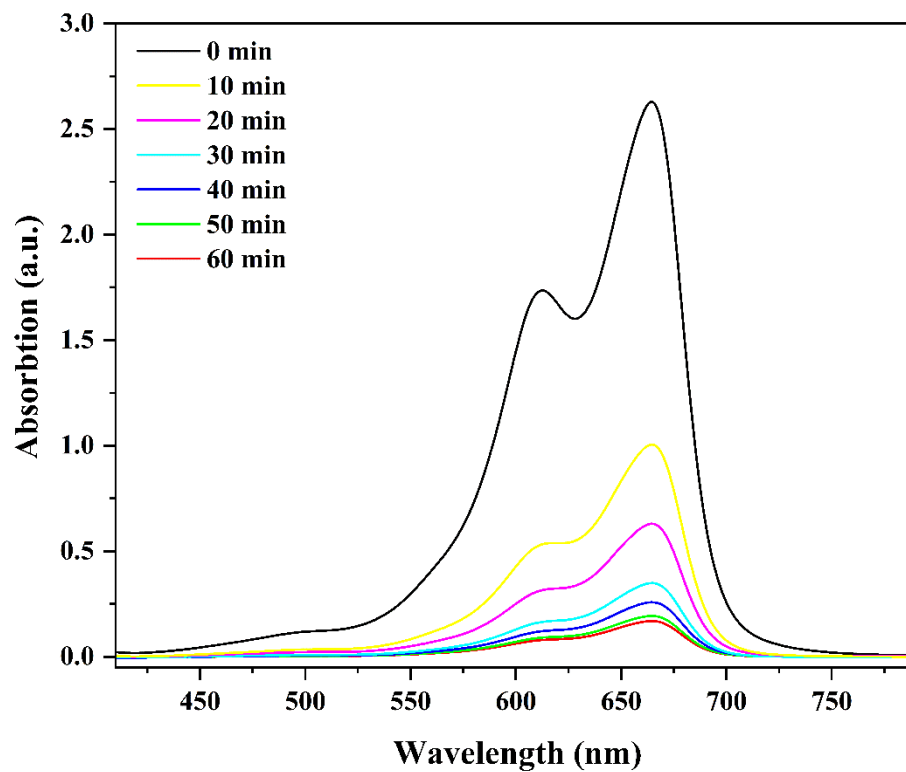


Fig. S2. Time-dependent UV-Vis spectra of MB decomposition in the Cu-BMS/PDS system. (Parameters: [Cu-BMS] = 0.5 g/L, [PDS] = 2.0 g/L, [MB] = 100 mg/L and pH = 6.5).

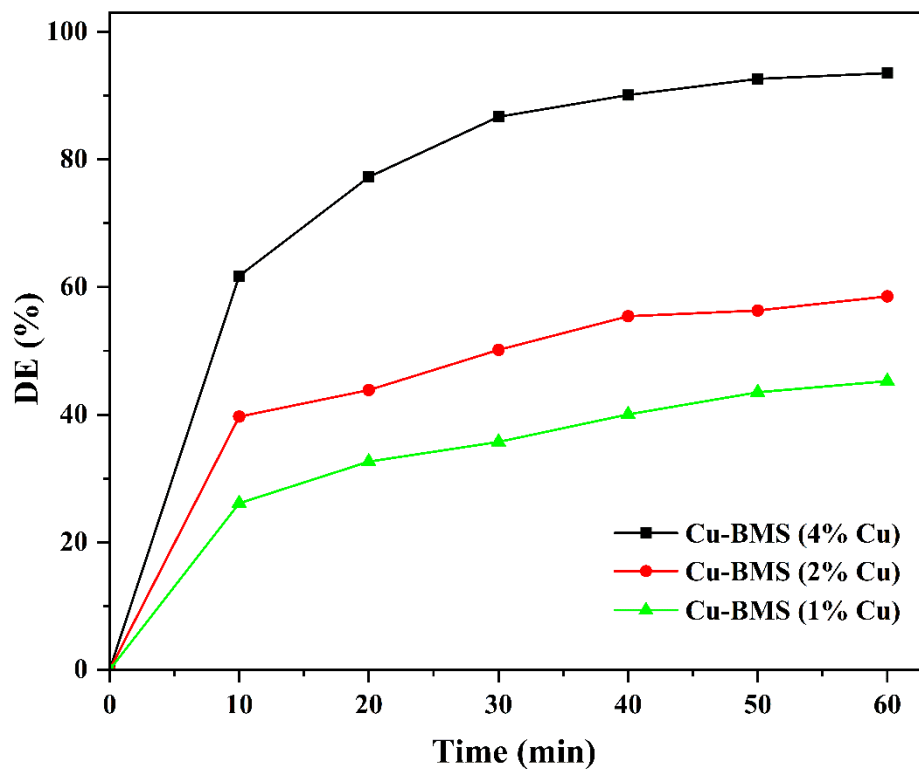


Fig. S3. Effect of varying Cu amount in the Cu-BMS on the DE% in the Cu-BMS/PDS system (Parameters: [Cu-BMS] = 0.5 g/L, [PDS] = 2.0 g/L, [MB] = 100 mg/L and pH = 6.5).

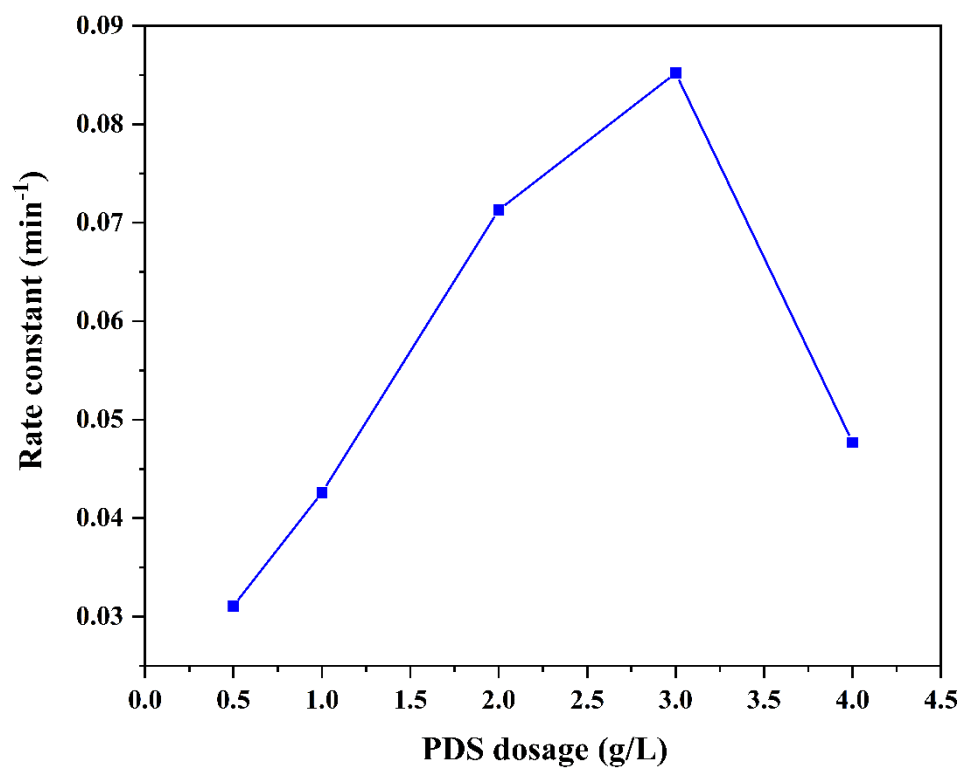


Fig. S4. The dependence of degradation reaction rate constant vs. PDS dosage.

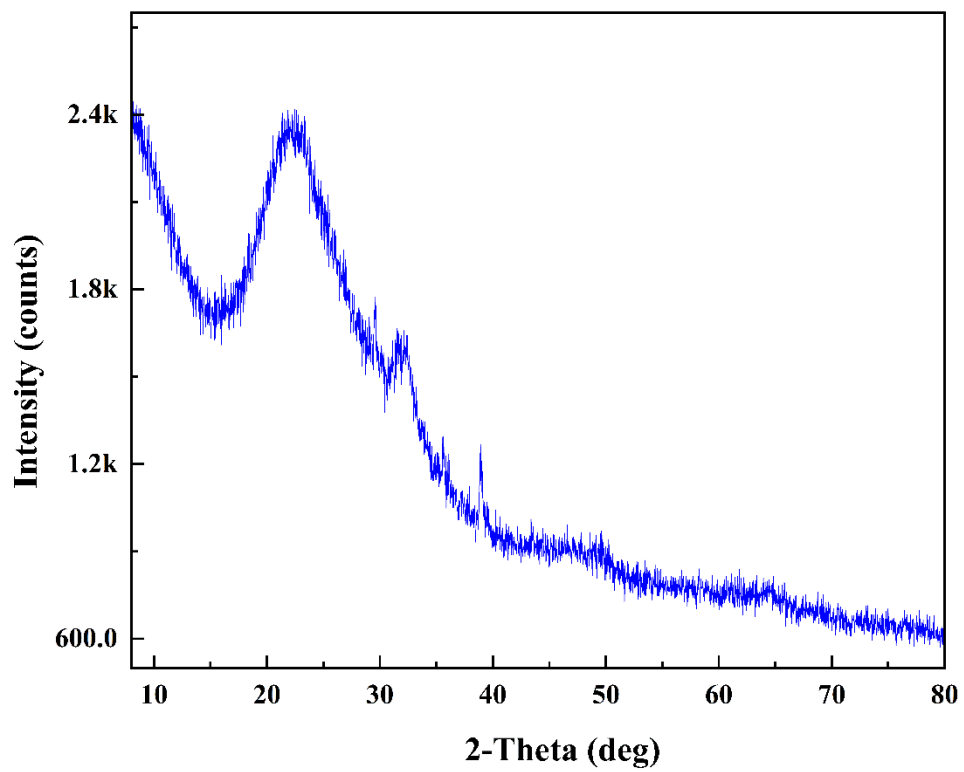


Fig. S5. XRD pattern of Cu-BMS particles after twelfth degradation cycles.

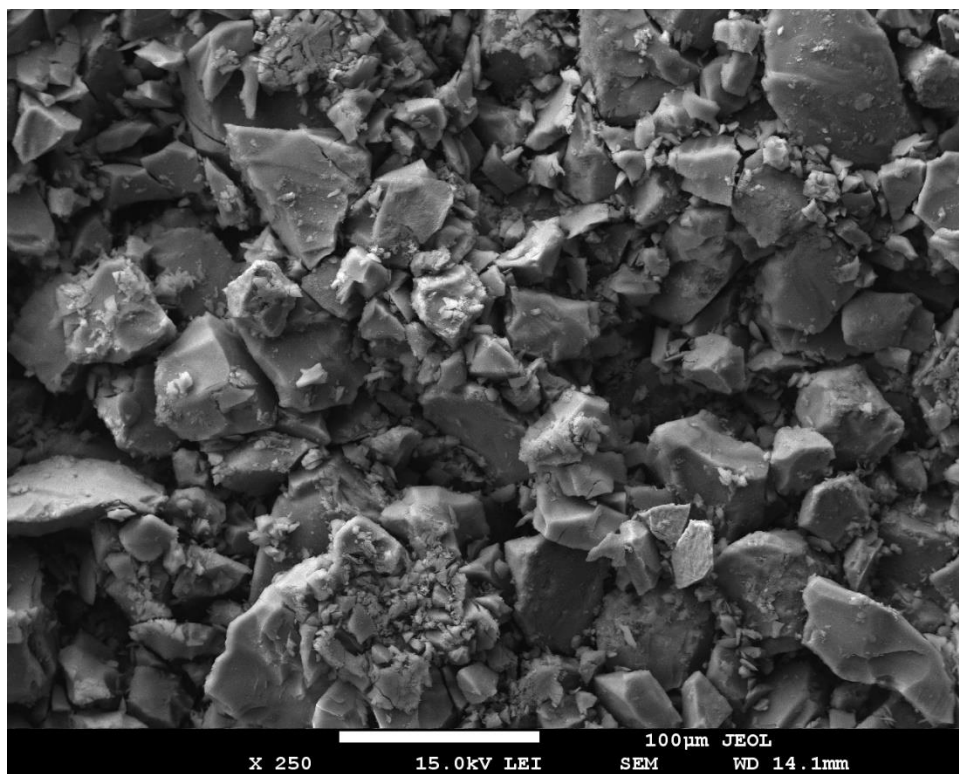


Fig. S6. SEM image of Cu-BMS particles after twelfth degradation cycles.

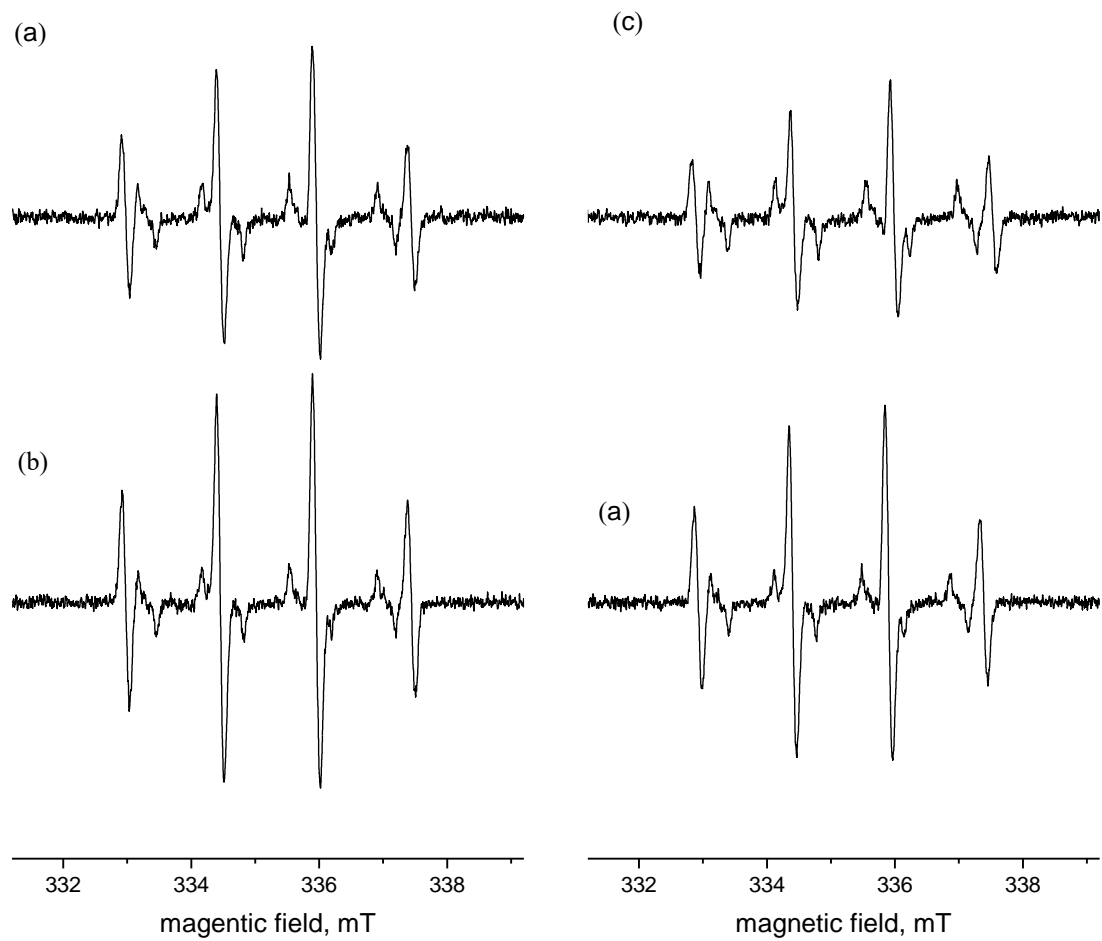


Fig. S7. Experimental EPR spectra of \cdot DMPO-OH and \cdot DMPO-SO₄⁻ spin adducts detected in the aqueous reaction system Cu-BMS/PDS/DMPO/air (a, b) and PDS/DMPO/air (c, d) measured from 3 min (a,c) and 11 min (b,d) after mixing. Information on experimental conditions is summarized in Experimental part.