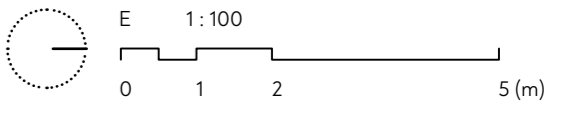
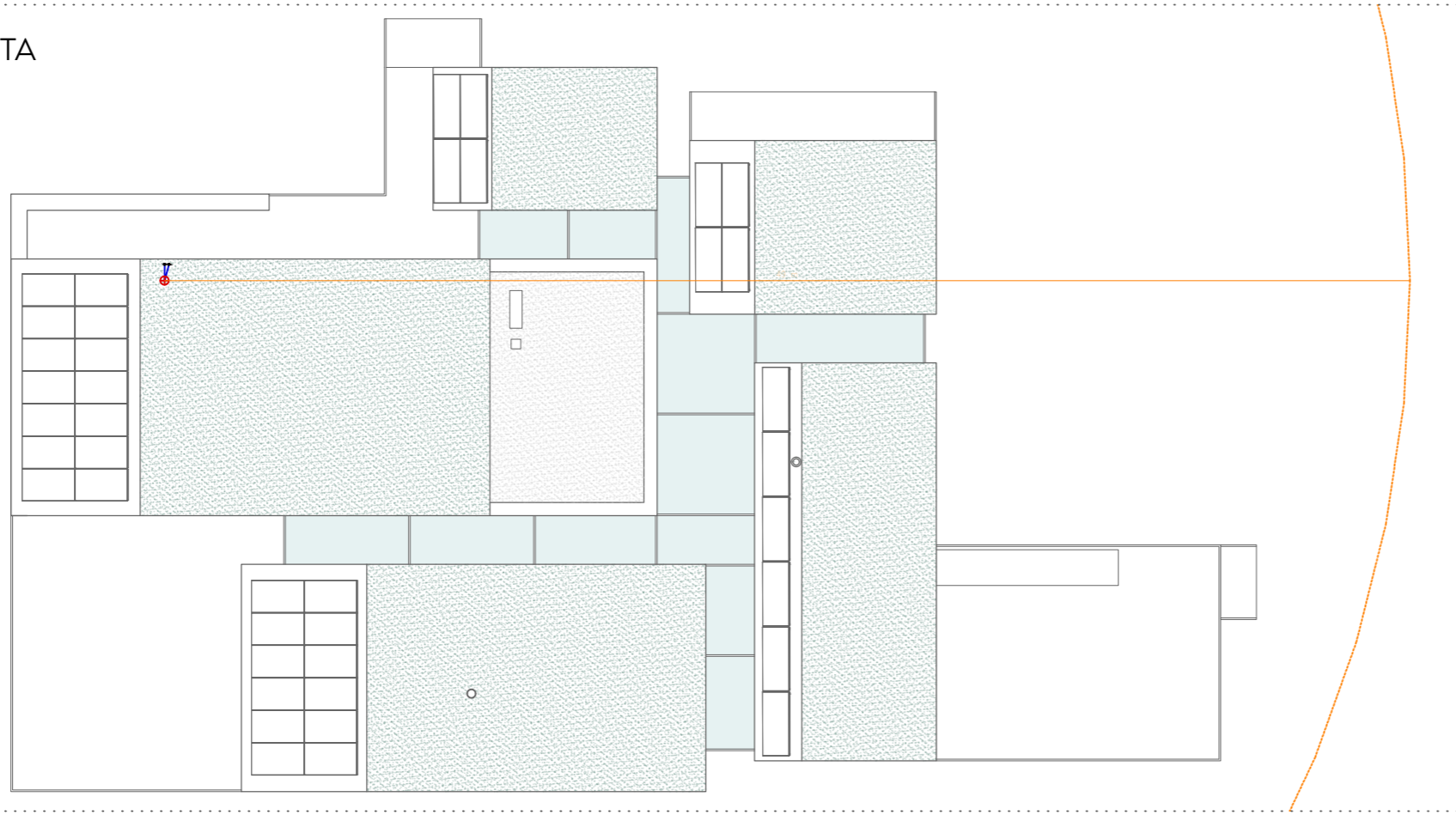


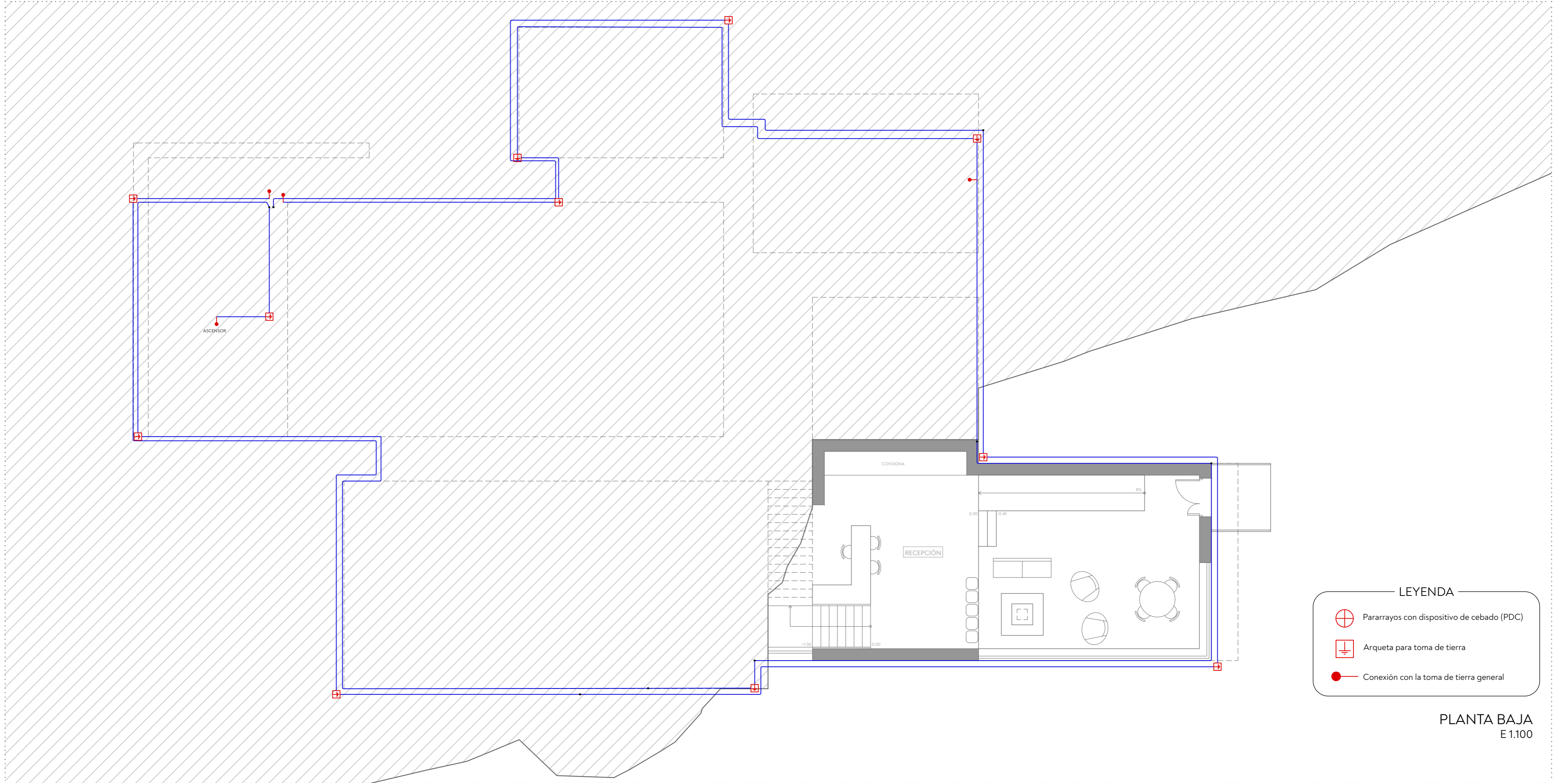
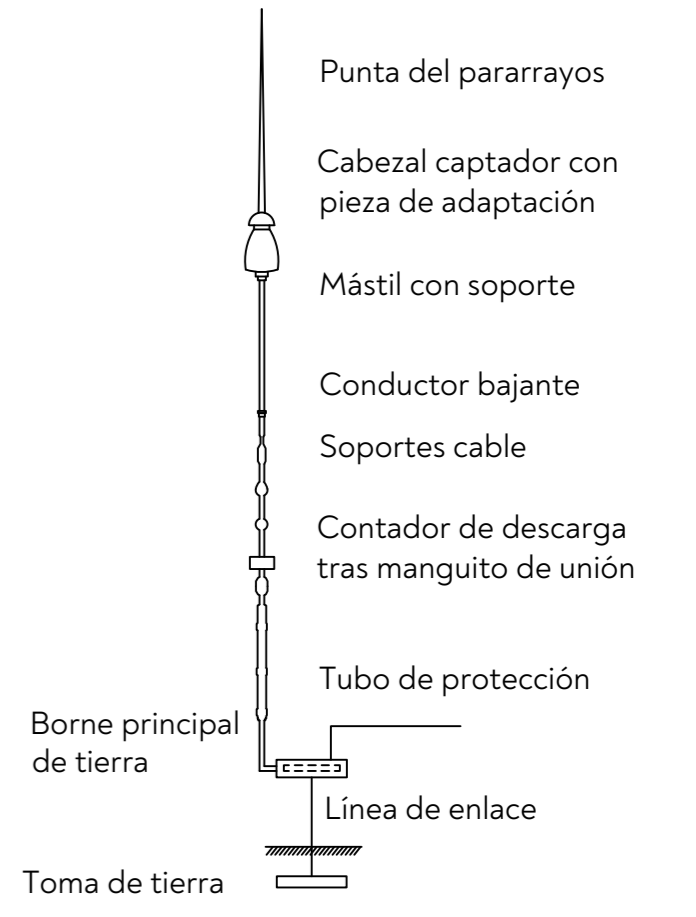
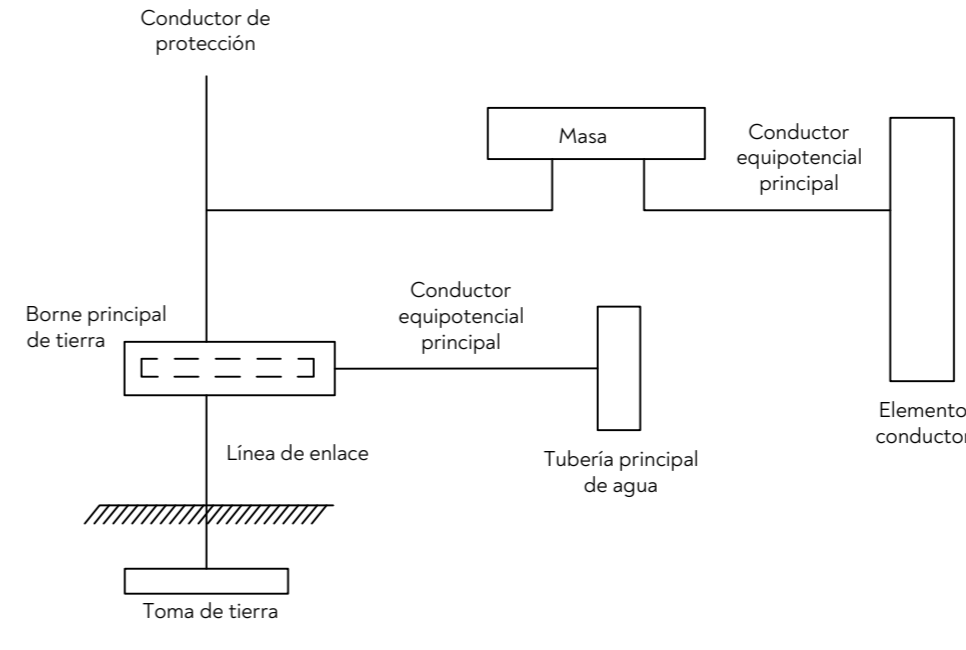
PUESTA A TIERRA Y PROTECCIÓN CONTRA EL RAYO



PLANTA CUBIERTA
E 1.200



ESQUEMA PUESTA A TIERRA

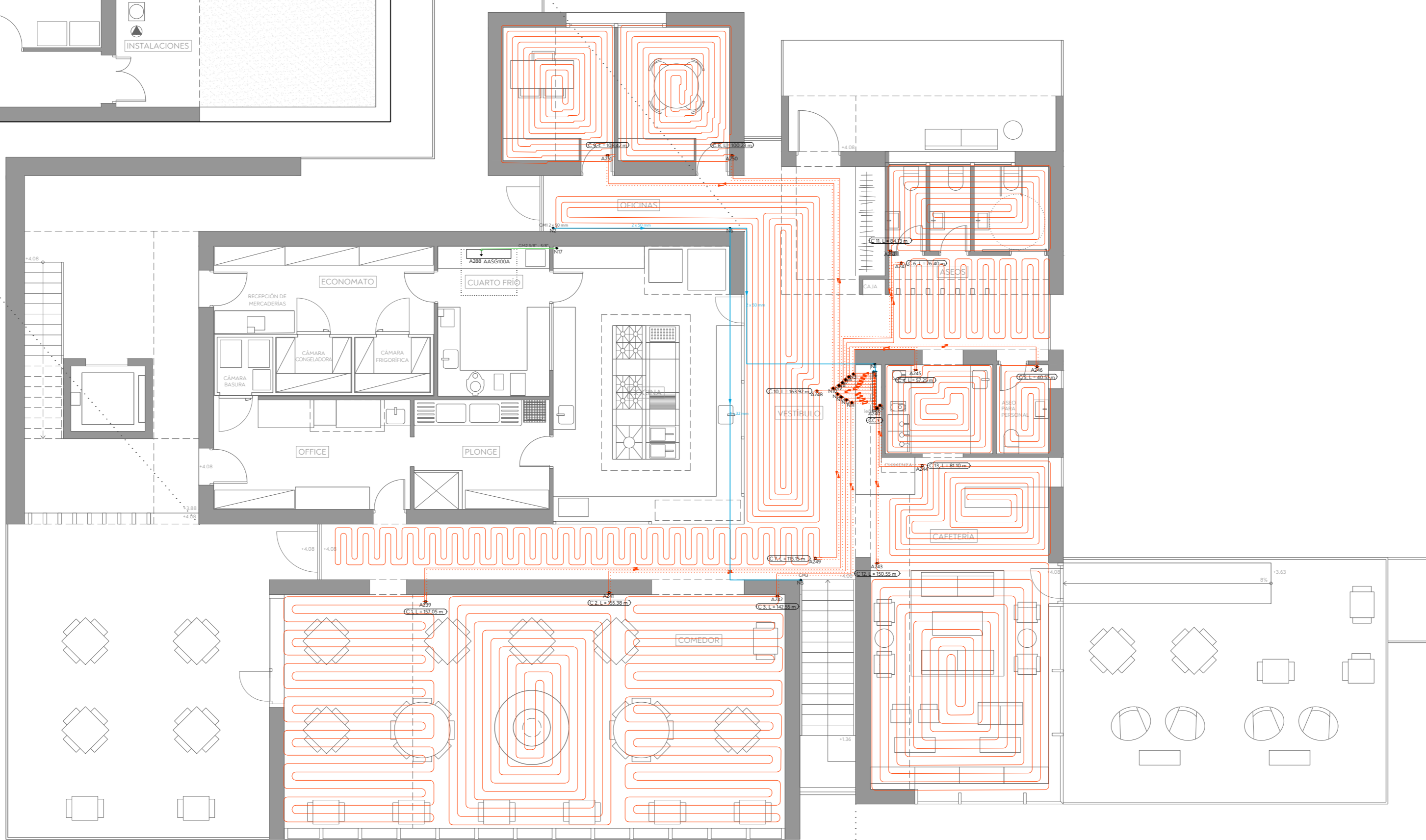
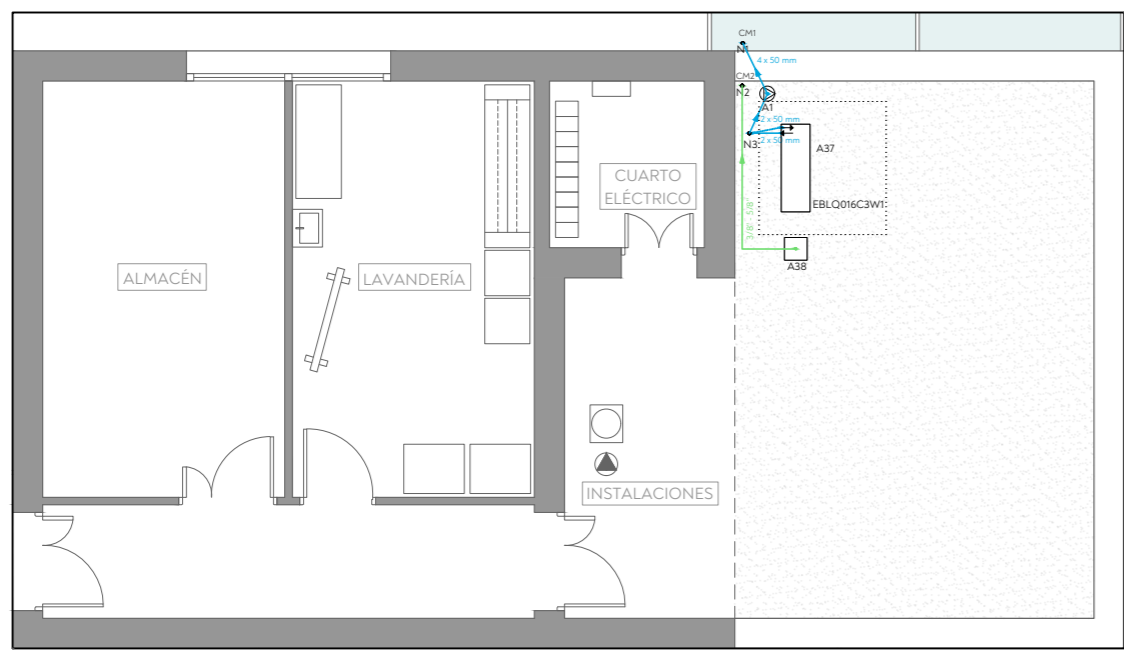


- LEYENDA
- Pararrayos con dispositivo de cebado (PDC)
 - Arqueta para toma de tierra
 - Conexión con la toma de tierra general

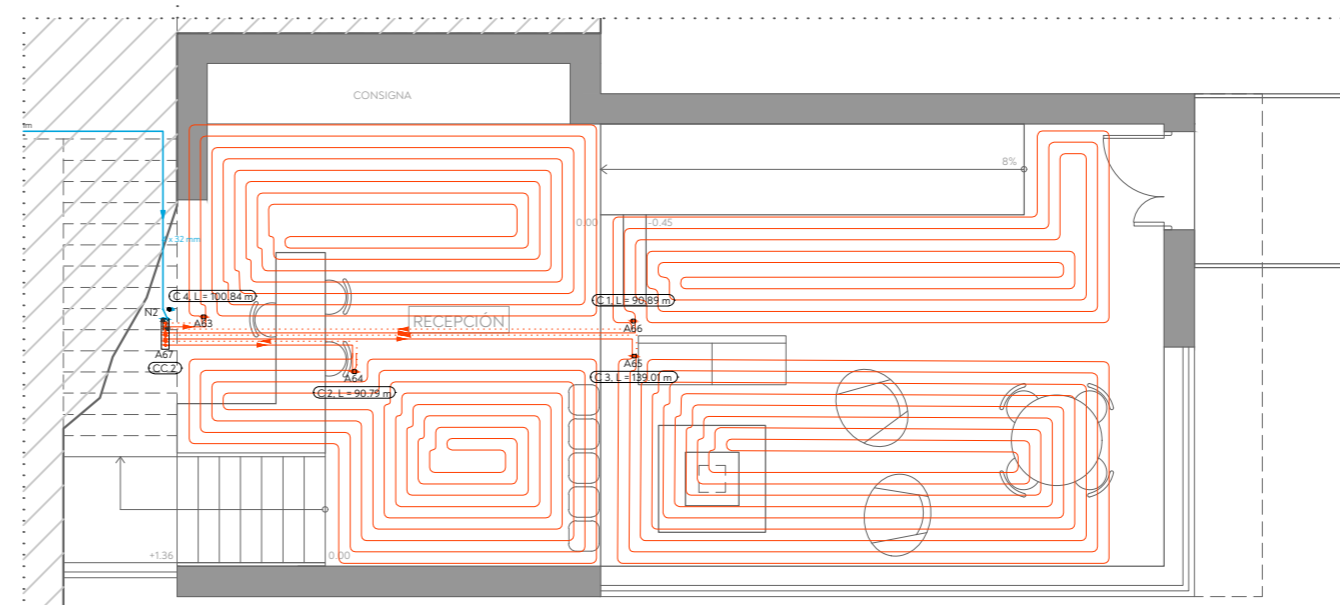
PLANTA BAJA
E 1.100

CLIMATIZACIÓN

PLANTA SEGUNDA
E 1.100



PLANTA PRIMERA
E 1.100



PLANTA BAJA
E 1.100

