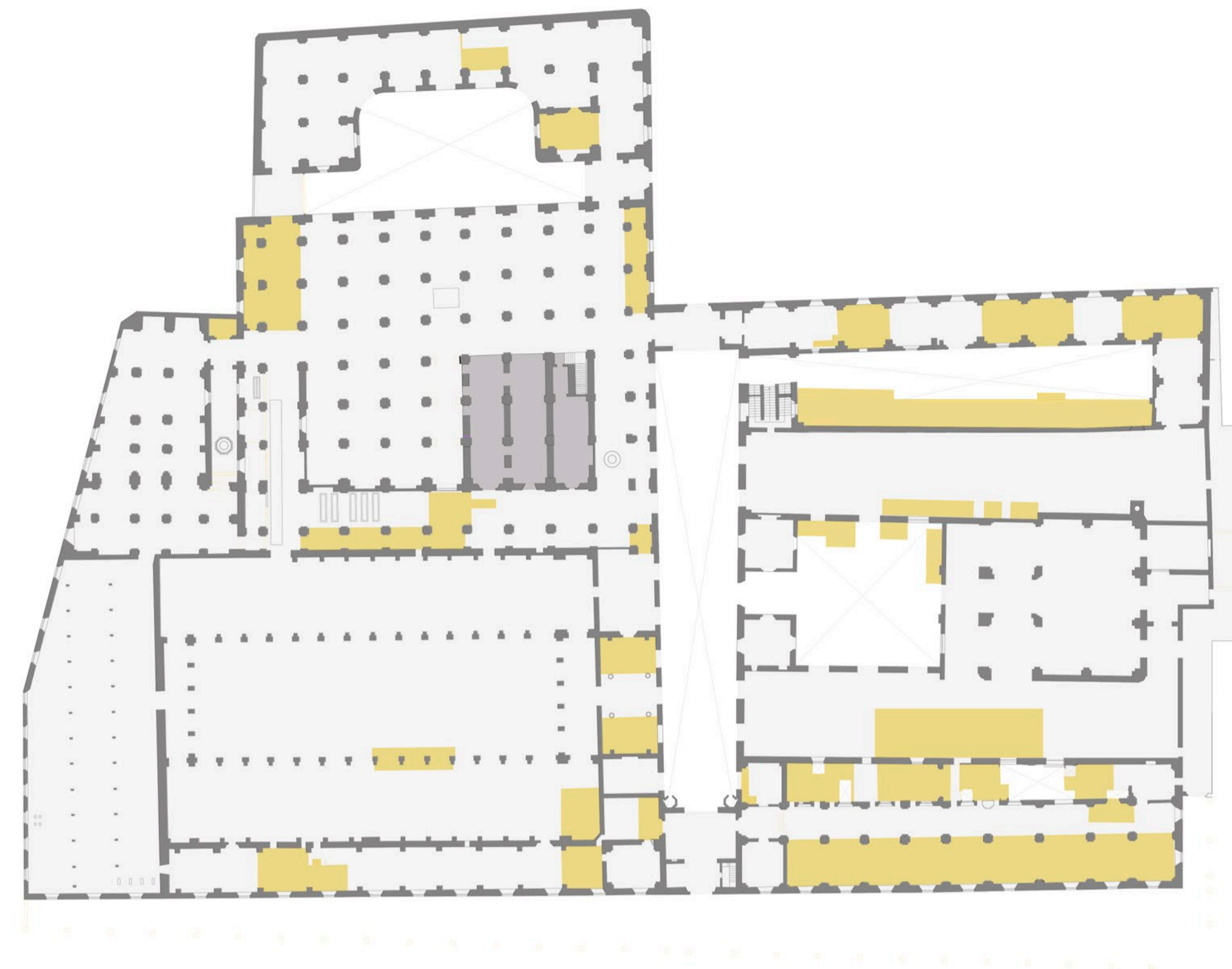
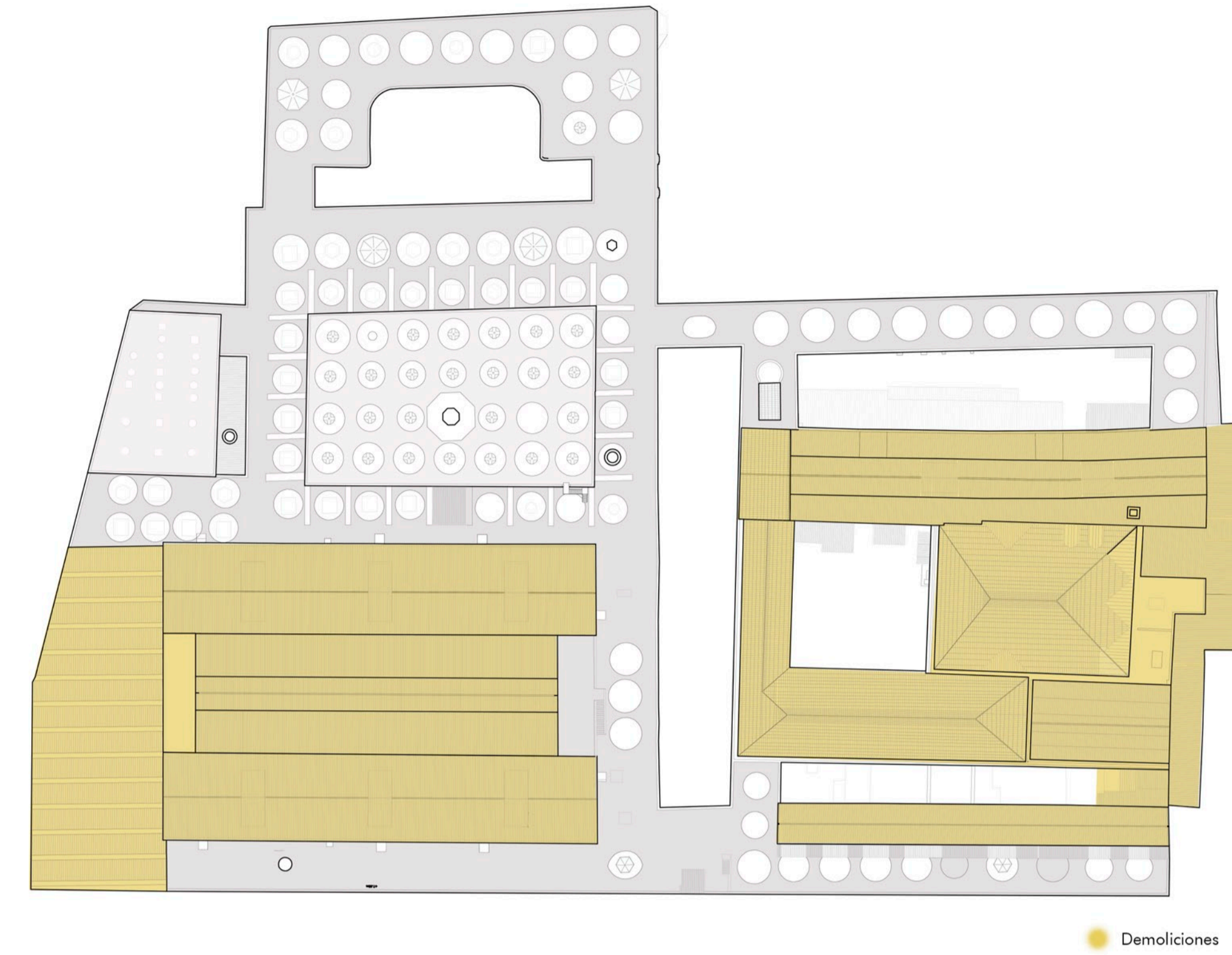


- Planta baja -

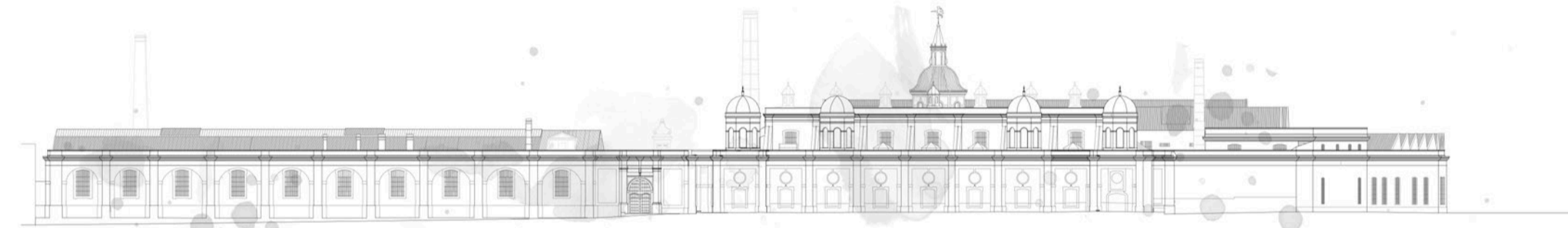


- Planta segunda -

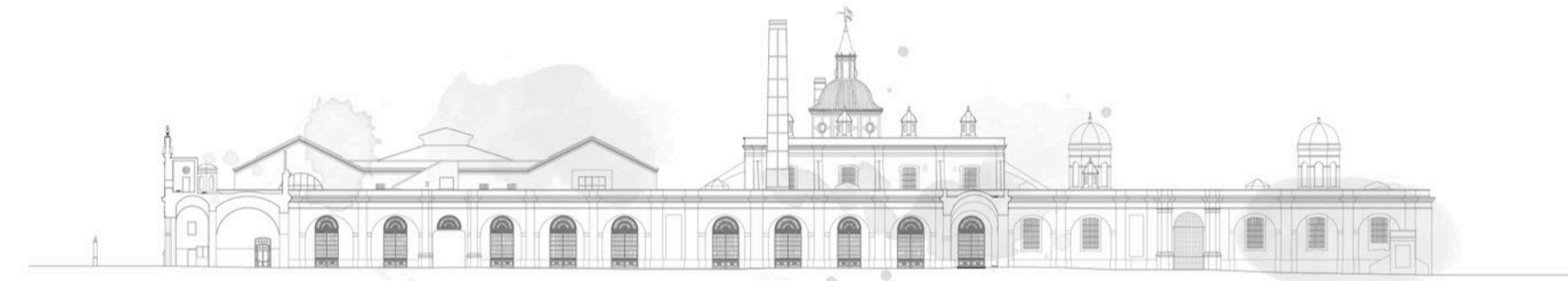


- Planta cubierta-

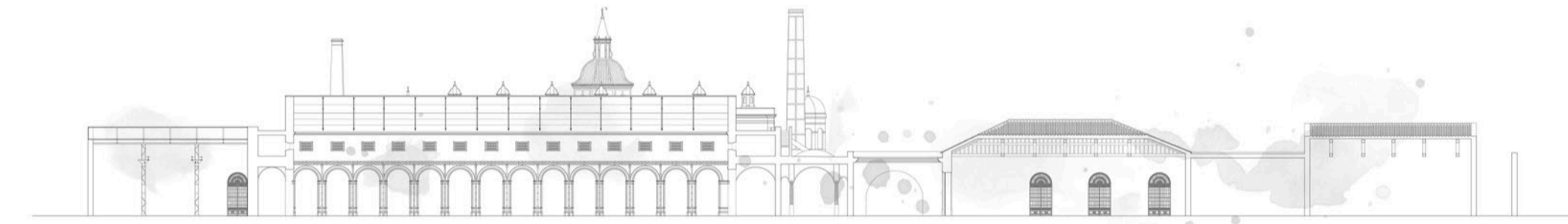
- Alzados y secciones -



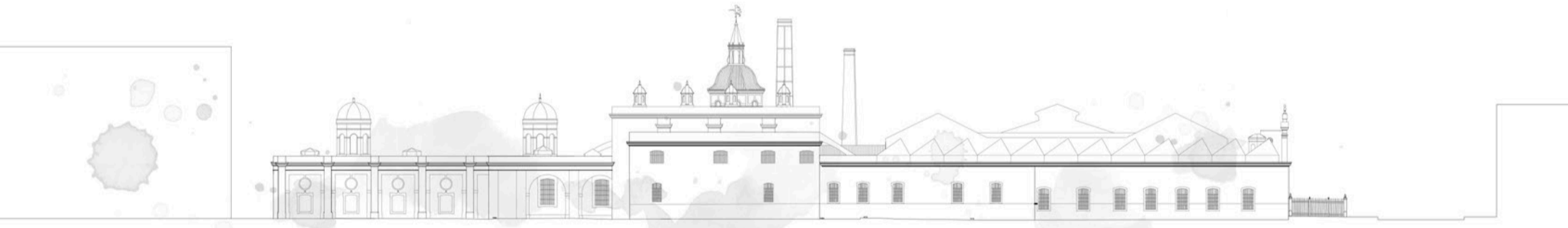
- Alzado A -



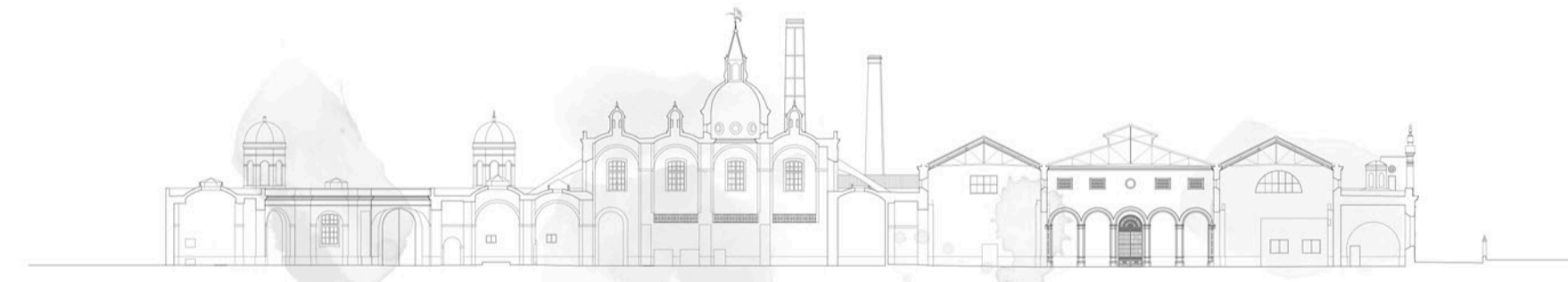
- Alzado B -



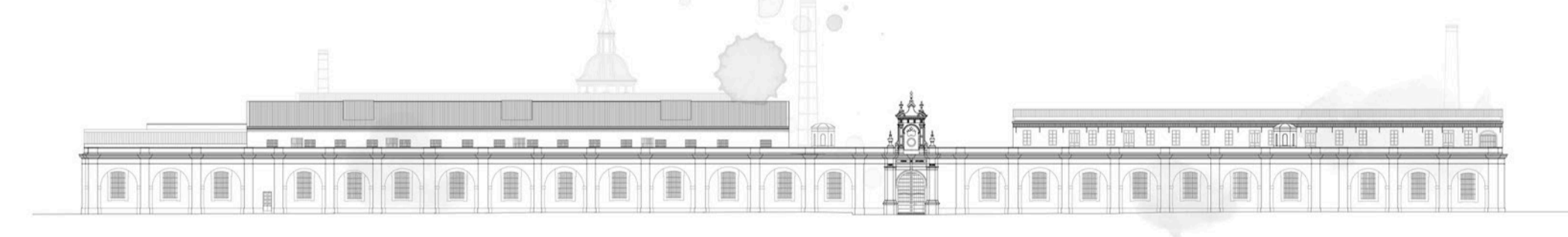
- Sección A-A' -



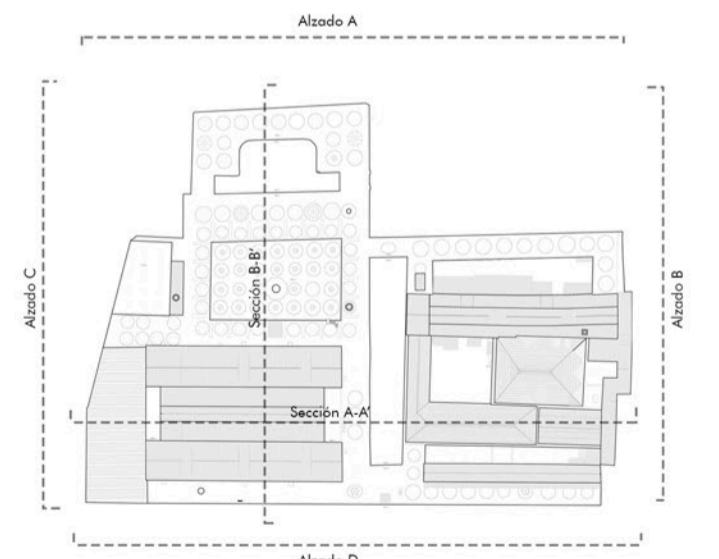
- Alzado C -



- Sección B-B' -



- Alzado D -



- Nave de Carlos III -



- Fundición menor -



- Calle interior -



- Nave neoclásica exterior -



- Fundición mayor -



- Taller de escorias -



- Nave neoclásica interior -