

Some isoperimetric problems in planes with density

Antonio Cañete*, Michele Miranda Jr[†] and Davide Vittone[‡]

Abstract

We study the isoperimetric problem in Euclidean space endowed with a density. We first consider piecewise constant densities and examine particular cases related to the characteristic functions of half-planes, strips and balls. We also consider continuous modification of Gauss density in \mathbb{R}^2 . Finally, we give a list of related open questions.

1 Introduction

The classical isoperimetric problem in Euclidean space \mathbb{R}^N looks for “least perimeter” sets among those ones with prescribed volume. A first solution of this problem was provided in 1935 by Lusternik, by proving, using symmetrisation techniques, that balls minimise Minkowski content (see also Burago-Zalgaller [8, Chapters 8 and 10]); the complete solution was given by De Giorgi [14], with the proof that balls are minimisers in the class of finite perimeter sets. The isoperimetric problem has been extended to Riemannian manifolds and, more recently, to the so-called *manifolds with density*.

A manifold with density (see also [24, Chapter 18]) is a manifold M endowed with a positive function $f : M \rightarrow \mathbb{R}^+$ used to weight both perimeter and volume. More precisely, given a regular set $E \subset M$, we define the (weighted) volume and perimeter of E to be

$$|E|_f := \int_E f \, dv, \quad P_f(E) := \int_{\partial E} f \, da,$$

where dv and da are volume and surface elements on M (see also Section 2 for precise definitions). Note that such a density is not equivalent to scaling the metric of M conformally by some factor λ , since in that case perimeter and volume would scale by different powers of λ .

One of the first and most important examples of manifolds with density, with applications to probability and statistics, is Gauss space \mathbb{R}^N with density $f(x) = e^{-|x|^2}$. Isoperimetric sets are half-spaces ([5, 27, 9]; see also [24, Chapter 18] or [25, Section 3]). More recently other authors (e.g. [25, 26, 10]) have considered different examples of manifolds with density and generalised classical techniques: Steiner and Schwarz symmetrisations [25], functional versions of the isoperimetric inequality [4], first and second variation formulae, mean curvature, Ricci curvature, and so on. We refer the reader also to [23, 24] and references therein.

In this paper we will consider two kinds of densities on the plane \mathbb{R}^2 : continuous modifications of the Gaussian density and piecewise constant densities, apparently the first examples of discontinuous ones. These questions arose in the lectures on “Manifolds with density” by F. Morgan during the meeting “GMTLAP-Geometric Measure Theory and Least Area Problems” in Modena (Italy), 15-17th February 2007, organized by G.P. Leonardi, R. Monti, F. Serra Cassano, R. Serapioni and I. Tamanini.

*Departamento de Matemática Aplicada I, Universidad de Sevilla, Campus de Reina Mercedes, E-24071, Sevilla, España; e-mail: antonioc@us.es

[†]Dipartimento di Matematica, Università degli Studi di Ferrara, via Machiavelli 35, 44100 Ferrara, Italy; e-mail: michele.miranda@unife.it

[‡]Dipartimento di Matematica Pura ed Applicata, Università degli Studi di Padova, via Trieste 63, 35100 Padova (PD), Italy; e-mail: vittone@math.unipd.it

The plan of the paper is the following. Section 2 contains introductory material on manifolds with density, perimeter, existence of isoperimetric sets, and first variation of the perimeter. We stress Proposition 2.13, which provides a Snell refraction law for isoperimetric boundaries for discontinuous, piecewise constant densities. We comment on minimal surfaces in manifolds with density and introduce calibrations, which provide sufficient conditions for minimality.

In Section 3 we investigate the isoperimetric problem in some cases of piecewise constant densities. The first one is the half-space density, i.e., the density on \mathbb{R}^N taking values 1 on the half-space $\{x_N \leq 0\}$ and $\lambda > 1$ on $\{x_N > 0\}$, where λ is a function depending only on the last coordinate x_N ; in this case, the isoperimetric sets are provided by round balls in the half-space $\{x_N \leq 0\}$ (Theorem 3.2). The second one is the “strip” density on \mathbb{R}^N taking values 1 if $|x_N| \leq 1$ and a constant $\lambda > 1$ otherwise; we show that isoperimetric sets exist and are connected for any given volume in the planar case, with some additional properties in general dimension. A further analysis leads us to Conjecture 3.12, where we list the possible solutions in the planar setting. This conjecture is almost completely proved in Theorem 3.16. The last density we consider is the “ball” density on \mathbb{R}^2 with values 1 outside the ball $B(0, 1)$ and constant $\lambda \neq 1$ inside: here isoperimetric sets exist for any given volume, are connected, and can assume several profiles, both in the case $\lambda > 1$ (see Theorem 3.20) and the case $\lambda < 1$ (see Theorem 3.23).

Section 4 concerns with modifications of Gauss density on \mathbb{R}^2 . A question risen during the GMTLAP meeting concerned the density $ye^{-(x^2+y^2)/2}$ on the half-plane $H = \{(x, y) \in \mathbb{R}^2 : y > 0\}$. We recently discovered that a paper of Brock et al. [7] gives a complete answer to this problem, showing that sets bounded by vertical lines are isoperimetric. We point out that, from that result, the same holds true also for the whole plane. During the GMTLAP meeting also the isoperimetric problem in the plane with density $e^{-x^2-y^4}$ was risen: we conjecture that here the isoperimetric boundary is provided by vertical or horizontal lines. For certain volume bounds (those close to half of the total volume) horizontal lines are better than vertical ones, while for other bounds vertical lines beat horizontal ones (see Proposition 4.3).

The last Section 5 collects several open questions: some from this paper, others from the GMTLAP meeting.

Acknowledgments. A. C. is partially supported by the MCyT research project MTM2007-61919; D.V. was partially supported by University of Padova, GNAMPA of MIUR and GALA project - Geometric Analysis in Lie groups and Applications, supported by the European Commission. The authors want to thank specially Frank Morgan, who inspired this work during the GMTLAP meeting, read kindly first manuscripts and gave important ideas and improvements during the preparation of this paper.

We further want, among the others, to acknowledge: Giovanni Alberti, Susanna Ansaloni, Nicola Arcozzi, Francesco Bigolin, Alessio Brancolini, Luca Corbo Esposito, Thomas Meinguet, Laurent Moonens, Fabio Paronetto, César Rosales, Raul Serapioni, Francesco Serra Cassano, Jeremy Tyson.

2 The isoperimetric problem in a space with density

Our framework is an open subset $\Omega \subset \mathbb{R}^N$ (we deal primarily with the cases of the whole space and the upper half-plane) endowed with a lower-semicontinuous, positive density function $f : \Omega \rightarrow \mathbb{R}^+$; due to the positivity of f , we shall sometimes write $f = e^\psi$. For a given measurable set $E \subset \mathbb{R}^N$, we define (according to [23]) its f -volume by

$$|E|_f = \int_{E \cap \Omega} f(x) dx$$

and its f -perimeter measure by

$$P_f(E, \Omega) = \liminf_{h \rightarrow +\infty} \int_{\partial E_h \cap \Omega} f d\mathcal{H}^{N-1}$$

where the \liminf is taken among all smooth sets E_h converging to E in the $L^1(\Omega)$ -topology. If no confusion may arise, we will just say volume and perimeter. We say that E has finite perimeter in

Ω if $P_f(E, \Omega) < +\infty$; whenever the set Ω is clear from the context, we shall simply write $P_f(E)$. The lower-semicontinuity of f ensures the equality

$$P_f(E) = \int_{\partial E \cap \Omega} f(x) d\mathcal{H}^{N-1}(x)$$

for smooth sets.

We also notice that, by restricting to the open sets

$$\Omega_k = \{x \in \Omega : 1/k < f(x) < k\},$$

finite perimeter sets and finite Euclidean perimeter sets in Ω_k coincide for all $k > 0$. By well-known results on finite perimeter sets (see [12, 13, 15, 16]), there exists a subset $\mathcal{F}E$ of the topological boundary ∂E which is rectifiable; that is, up to \mathcal{H}^{N-1} -negligible sets, is contained in a countable union of Lipschitz graphs. We point out that for a $(N-1)$ -rectifiable set Σ the unit normal vector ν_Σ is defined \mathcal{H}^{N-1} -almost everywhere. The set $\mathcal{F}E$ is called *reduced boundary* of E ; for sake of simplicity, we will sometimes write Σ instead of $\mathcal{F}E$ and, if not differently stated, ν_Σ will denote the inward unit normal vector. Mostly important, this part of the boundary is the essential part for the perimeter measure; that is, the following representation formula holds:

$$P_f(E, \Omega_k) = \int_{\mathcal{F}E \cap \Omega_k} f(x) d\mathcal{H}^{N-1}(x).$$

Using the fact that $\Omega = \cup \Omega_k$, we also obtain that

$$P_f(E) = \int_{\mathcal{F}E \cap \Omega} f(x) d\mathcal{H}^{N-1}(x).$$

We shall use next result.

Lemma 2.1 *If the density f satisfies $f \geq \eta > 0$ on Ω , then $P_f(E, \Omega) \geq \eta P(E, \Omega)$; moreover, in the case $N = 2$, if E is smooth and connected, we have*

$$\text{diam}_\Omega(E) \leq \frac{1}{2} P(E, \Omega) \leq \frac{1}{2\eta} P_f(E, \Omega). \quad (1)$$

Since we allow discontinuities in f , we introduce the following notation for $f \in L^1_{\text{loc}}(\Omega)$. For fixed $\nu \in \mathbb{S}^{N-1}$, let

$$B_\nu^+(x, \varrho) = \{x \in B(x, \varrho) : \langle x, \nu \rangle \geq 0\}, \quad B_\nu^-(x, \varrho) = \{x \in B(x, \varrho) : \langle x, \nu \rangle \leq 0\},$$

where $B(x, \varrho)$ is the open ball of center x with radius ϱ (balls, unless stated otherwise, are always assumed to be open). Moreover, we define the limits of f in the positive and negative direction of the vector ν by

$$f_\nu^\pm(x) = \lim_{\varrho \rightarrow 0} \frac{1}{|B_\nu^\pm(x, \varrho)|} \int_{B_\nu^\pm(x, \varrho)} f(y) dy. \quad (2)$$

The quantity $(f_\nu^+ - f_\nu^-)\nu$ does not change if we replace ν with $-\nu$, so we will assume, if not stated otherwise, that ν is chosen in such a way that $f_\nu^- \leq f_\nu^+$. If X is any nonzero vector, we denote by f_X^\pm the previous quantities in the direction $\nu = \frac{X}{|X|}$.

We collect in the following Proposition a little list of known results in the isoperimetric problem we shall use and generalise. A very nice description of these properties is contained in [26]. We recall that a variation is given by a one-parameter family of diffeomorphisms $\Phi_t : \mathbb{R}^N \rightarrow \mathbb{R}^N$; for such a given family, we define

$$V(t) = |\Phi_t(E)|_f, \quad P(t) = P_f(\Phi_t(E)).$$

Proposition 2.2 *In a region Ω with density f , consider the isoperimetric problem of finding a closed “isoperimetric set” E of least perimeter for prescribed volume v .*

1. If $|\Omega|_f < +\infty$, an isoperimetric set always exists.
2. If f is Lipschitz continuous, then E is locally $\mathcal{C}^{1,1}$ except for a singular set of Hausdorff codimension 8 in Ω .

PROOF. We sketch here the proofs; we fix $v \in (0, |\Omega|_f)$ and a minimising sequence of sets E_h with $|E_h|_f = v$. Condition $|\Omega|_f < +\infty$, by setting $d\mu = f dx$ implies that the functions χ_{E_h} are equi-integrable in $L^1(\Omega, \mu)$, so they are relatively compact. Up to subsequences, χ_{E_h} converges to a function $g \in L^1(\Omega, \mu)$; by the a.e. convergence, g has to be a characteristic function χ_E . The fact that $|E|_f = v$ follows by continuity of the measure and

$$P_f(E) \leq \liminf_{h \rightarrow +\infty} P_f(E_h)$$

follows by lower-semicontinuity of the perimeter measure, so E is an isoperimetric set.

The proof of regularity can be found in Morgan [22, Proposition 3.5, Corollary 3.8 and Remark 3.10]. \square

Remark 2.3 We collect here some necessary conditions for a set E to be isoperimetric, under the assumption that f is C^1 (see Rosales et al. [26]):

1. Σ is stationary under volume preserving variations, i.e. $P'(0) = 0$ whenever $V'(0) = 0$;
2. there exists a constant H_0 such that for any variation

$$(P - H_0 V)'(0) = 0; \tag{3}$$

3. the generalised mean curvature

$$H_\psi = (N - 1)H_\Sigma - \langle \nabla \psi, \nu_\Sigma \rangle, \tag{4}$$

with H_Σ the Euclidean mean curvature, is constant.

In Section 2.2 we shall see how to generalise these conditions to the case of piecewise regular density.

2.1 Minimal surfaces and calibrations

We extend to manifolds with density the classical method of calibrations (see e.g. Definition 4.1 and Theorem 4.2 of Harvey-Lawson [21] or Federer [16]), giving sufficient conditions for a surface to be perimeter minimising.

We say that a set $E \subset \mathbb{R}^N$ of finite perimeter is *perimeter minimising* (without volume constraint) in an open set $\Omega \subset \mathbb{R}^N$ if

$$P_f(E, \Omega) \leq P_f(F, \Omega)$$

for any set F such that $E \Delta F := (E \setminus F) \cup (F \setminus E) \Subset \Omega$.

Theorem 2.4 *Suppose $\Omega \subset \mathbb{R}^N$ is an open set and $E \subset \mathbb{R}^N$ has finite perimeter in Ω . Moreover, suppose that there exists a \mathcal{C}^1 function $g : \Omega \rightarrow \mathbb{R}^N$ such that*

- $|g(x)| \leq 1$ for any $x \in \Omega$;
- $g \equiv \nu_E$ \mathcal{H}^{N-1} -a.e. on $\mathcal{F}E$;
- $\operatorname{div}(fg) = 0$ in the distributional sense.

Then E is perimeter minimising in Ω .

PROOF. Let F be another open set of finite perimeter in Ω with $E\Delta F \Subset \Omega'$ where without loss of generality we assume Ω' to have smooth boundary with finite surface measure. Since $\operatorname{div}(fg) = 0$, by the divergence theorem

$$\begin{aligned}
P_f(E, \Omega) &= P_f(E, \Omega \setminus \Omega') + \int_{\mathcal{F}E \cap \Omega'} f d\mathcal{H}^{N-1} \\
&= P_f(E, \Omega \setminus \Omega') + \int_{\mathcal{F}E \cap \Omega'} \langle fg, \nu_E \rangle d\mathcal{H}^{N-1} \\
&= P_f(E, \Omega \setminus \Omega') - \int_{\partial\Omega' \cap E} \langle fg, \nu_{\Omega'} \rangle d\mathcal{H}^{N-1} \\
&= P_f(F, \Omega \setminus \Omega') - \int_{\partial\Omega' \cap F} \langle fg, \nu_{\Omega'} \rangle d\mathcal{H}^{N-1} \\
&= P_f(F, \Omega \setminus \Omega') + \int_{\mathcal{F}F \cap \Omega'} \langle fg, \nu_F \rangle d\mathcal{H}^{N-1} \\
&\leq P_f(F, \Omega \setminus \Omega') + P_f(F, \Omega') = P_f(F, \Omega).
\end{aligned}$$

□

Example 2.5 Consider \mathbb{R}^2 with density $f(x, y) = (x^2 + y^2)^{1/2}$; then the curve $(x, \sqrt{1+x^2})$ is area minimising, in the sense that its epigraph is perimeter–minimising. In fact, a calibration is given by

$$g(x, y) := \left(-\frac{x}{\sqrt{x^2 + y^2}}, \frac{y}{\sqrt{x^2 + y^2}} \right)$$

which extends the normal vector to the curve and satisfies the hypotheses of Theorem 2.4. Notice that the singularity of g in 0 does not affect the validity of our argument.

Remark 2.6 Suppose S is a hypersurface in \mathbb{R}^N (with a \mathcal{C}^1 regular density f) which coincides with the graph of a \mathcal{C}^1 function $\phi : \mathbb{R}^{N-1} \rightarrow \mathbb{R}$, i.e.

$$S = \{(x, x_N) : x \in \mathbb{R}^{N-1}, x_N = \phi(x)\}.$$

It is immediate to see that the surface measure of S is given by

$$\sigma_f(S) = \int_{\mathbb{R}^{N-1}} \sqrt{1 + |\nabla\phi(x)|^2} f(x, \phi(x)) dx.$$

For area–minimising hypersurfaces the generalised mean curvature introduced in (4) vanishes; this means that ϕ satisfies the minimal surface equation

$$\operatorname{div} \left(\frac{f(x, \phi(x)) \nabla\phi(x)}{\sqrt{1 + |\nabla\phi(x)|^2}} \right) + \sqrt{1 + |\nabla\phi(x)|^2} \frac{\partial f}{\partial x_N}(x, \phi(x)) = 0 \quad \text{in } \mathbb{R}^{N-1}. \quad (5)$$

Remark 2.7 We observe in passing that, in Gauss space \mathbb{R}^N with density $e^{-|x|^2}$, half–spaces through the origin have boundary (seen as a graph) satisfying (5) (they have vanishing mean curvature) but are not perimeter minimising in \mathbb{R}^N , although they are isoperimetric for volume 1/2 [5, 27]. It can be proved in fact that there are no complete perimeter–minimising surfaces in Gauss space. Suppose by contradiction that there exists a measurable set E which is perimeter–minimising in \mathbb{R}^N . Choose an open bounded set \mathcal{U} such that $P_f(E, \mathcal{U}) > 0$. Let us consider a sufficiently large $R > 0$ such that $\mathcal{U} \Subset B_R = B(0, R)$ and

$$P_f(B_R, \mathbb{R}^N) = N\omega_N R^{N-1} e^{-R^2} < P_f(E, \mathcal{U}),$$

and set $F := E \setminus B_R$. It is easily seen that

$$\begin{aligned}
P_f(F, B_{R+1}) &\leq P_f(F, B_{R+1} \setminus \overline{B_R}) + P_f(B_R, \mathbb{R}^N) \\
&< P_f(F, B_{R+1} \setminus \overline{B_R}) + P_f(E, \mathcal{U}) \leq P_f(E, B_{R+1}),
\end{aligned}$$

contradicting the minimality of E .

Theorem 2.8 *Suppose that f is a regular density in $\mathbb{R}^N = \mathbb{R}_x^{N-1} \times \mathbb{R}_{x_N}$ which does not depend on the last coordinate x_N , and suppose that $\phi : \omega \subset \mathbb{R}^{N-1} \rightarrow \mathbb{R}$ satisfies the minimal surface equation (5). Then the graph of ϕ is perimeter–minimising in $\omega \times \mathbb{R}$.*

PROOF. With our hypotheses on f the minimal surface equation (5) becomes

$$\operatorname{div}_{\mathbb{R}^{N-1}} \left(\frac{f \nabla \phi}{\sqrt{1 + |\nabla \phi|^2}} \right) = 0 \quad \text{in } \omega, \quad (6)$$

where of course we interpret f as a function of $N - 1$ coordinates only. Then the normal to the graph at a point $(x, \phi(x))$ is given by

$$\left(\frac{\nabla \phi(x)}{\sqrt{1 + |\nabla \phi(x)|^2}}, -\frac{1}{\sqrt{1 + |\nabla \phi(x)|^2}} \right),$$

and if we set

$$g(x, x_N) := \left(\frac{\nabla \phi(x)}{\sqrt{1 + |\nabla \phi(x)|^2}}, -\frac{1}{\sqrt{1 + |\nabla \phi(x)|^2}} \right), \quad (x, x_N) \in \omega \times \mathbb{R},$$

by (6) we obtain

$$\operatorname{div}_{\mathbb{R}^N} (fg) = \operatorname{div}_{\mathbb{R}^{N-1}} \left(\frac{f \nabla \phi}{\sqrt{1 + |\nabla \phi|^2}} \right) = 0.$$

Therefore the hypotheses of Theorem 2.4 are satisfied, and the graph of ϕ is perimeter–minimising. \square

Corollary 2.9 *Suppose \mathbb{R}^N is endowed with a density independent on the last coordinate x_N ; then all affine hyperplanes $\{x_N = \text{const}\}$ are perimeter–minimising surfaces.*

Example 2.10 Let us consider the plane \mathbb{R}^2 endowed with the density $f(x, y) = e^x$ introduced in [10], where it is proved (see Corollary 4.7 therein) that there exist no isoperimetric regions, essentially because constant curvature curves have infinite perimeter. As observed in Corollary 2.9, hyperplanes $\{y = \text{const}\}$ are perimeter–minimising surfaces. Using Theorem 2.8, one could check that for any $a, b \in \mathbb{R}$ the graphs of functions

$$\phi(x) = a \pm \int_0^x \sqrt{\frac{1}{e^{2t}(1 + \frac{1}{b^2})} - 1} dt,$$

defined on proper half-lines $]c, +\infty[$, are perimeter–minimising surfaces in $]c, +\infty[\times \mathbb{R}$.

2.2 Piecewise regular densities

In the case of a piecewise regular density, variational formulae have to be slightly modified taking into account the jump set of the density f . By piecewise regular density we mean a function

$$f(x) = \begin{cases} f_i(x) & x \in \Omega_i \\ \inf\{f_i(x)\} & x \in \partial\Omega_i \end{cases}$$

with $\Omega_1, \dots, \Omega_k$ disjoint open Lipschitz domains, $f_i \in \mathcal{C}^1(\overline{\Omega}_i)$, and $f > 0$ on $\overline{\Omega}_i$: we denote by Γ the set

$$\Gamma = \bigcup_{i=1}^k \partial\Omega_i.$$

Using the notation introduced in (2), for \mathcal{H}^{N-1} -almost every $x \in \Gamma$ we have $f_\nu^\pm(x) = f_i(x)$ for some i , where $\nu = \nu_\Gamma$ is a unit normal vector to Γ ; as usual, ν_Γ has the property that $f_{\nu_\Gamma}^- \leq f_{\nu_\Gamma}^+$. For a given set $E \subset \mathbb{R}^N$ with finite perimeter, the functions χ_{E, ν_Γ}^\pm are the traces of E on the two sides of Γ . These traces are well defined since the trace operator $T : BV(\Omega) \rightarrow L^1(\partial\Omega)$ is continuous whenever $\partial\Omega$ is Lipschitz (see for instance [1, Theorem 3.88]).

We can then state the following proposition.

Proposition 2.11 (First variation of volume and perimeter) *Let f be a piecewise regular density and let E be a set of finite perimeter, Σ its reduced boundary. Let us assume that $\{\Phi_t\}_{t \geq 0} : \mathbb{R}^N \rightarrow \mathbb{R}^N$ is a smooth one-parameter variation with $\Phi_0 = Id$. Set $X := \frac{d}{dt}\Phi_t|_{t=0}$ and $u := \langle X, \nu_\Sigma \rangle$, ν_Σ the inward unit normal vector to $\mathcal{F}E$; then the following first variation formula for the volume holds*

$$\begin{aligned} V'(0) &= \int_E (\langle \nabla f, X \rangle + f \operatorname{div} X) dx \\ &= - \int_{\Sigma \setminus \Gamma} f u d\mathcal{H}^{N-1} - \int_\Gamma (f_{\nu_\Gamma}^+ \chi_{E, \nu_\Gamma}^+ - f_{\nu_\Gamma}^- \chi_{E, \nu_\Gamma}^-) \langle X, \nu_\Gamma \rangle d\mathcal{H}^{N-1}. \end{aligned} \quad (7)$$

Moreover, the function $P(t) = P_f(\Phi_t(E))$ is differentiable at $t = 0$ if for \mathcal{H}^{N-1} -a.e. $x \in \Gamma \cap \Sigma$ there exists some $t_x > 0$ such that $\Phi_t(x) \in \Omega_i$ for $0 < t < t_x$, where i is such that $f_{\nu_\Gamma}^-(x) = f_i(x)$; this is the case if, for instance,

$$\langle X, \nu_\Gamma \rangle < 0 \quad (8)$$

wherever ν_Γ is defined. In this case

$$P'(0) = \int_\Sigma f_{\nu_\Sigma}^- \operatorname{div}_\Sigma X d\mathcal{H}^{N-1} + \int_\Sigma \langle \nabla f_{\nu_\Sigma}^-, X \rangle d\mathcal{H}^{N-1}. \quad (9)$$

For the proof of Proposition 2.11, we shall make use of the following result [19, Lemma 10.1].

Lemma 2.12 *Let f be any measurable lower-semicontinuous density, and let $F : \mathbb{R}^N \rightarrow \mathbb{R}^N$ be a diffeomorphism. If E and $F(E)$ have finite perimeter, then the following relation holds*

$$P_f(F(E)) = \int_{\mathcal{F}E} f(F(x)) |H_F(x) \nu_E(x)| d\mathcal{H}^{N-1}(x), \quad (10)$$

where we have defined

$$H_F(x) = |\det DF| DF^{-1}(F(x)).$$

We can then prove Proposition 2.11.

PROOF. The proof of this fact is essentially the same contained in [26]; in fact, we have that

$$V(t) = \int_{\Phi_t(E)} f(y) dy = \int_E f(\Phi_t(x)) |\det D\Phi_t(x)| dx.$$

Then, using the almost everywhere differentiability of f ,

$$\begin{aligned} V'(0) &= \int_E \left(\langle \nabla f(x), X(x) \rangle + f(x) \frac{d}{dt} |\det D\Phi_t(x)|_{t=0} \right) dx \\ &= \sum_{i=1}^k \int_{E \cap \Omega_i} (\langle \nabla f_i(x), X(x) \rangle + f_i(x) \operatorname{div} X(x)) dx. \end{aligned}$$

Notice that $E \cap \Omega_i$ has finite perimeter and $\mathcal{F}(E \cap \Omega_i)$ is made by two pieces: $\mathcal{F}E \cap \Omega_i$ and the part of $\partial\Omega_i$ where E has trace 1, that is $\chi_{E, \nu_{\Omega_i}}^+ = 1$ (here ν_{Ω_i} is the inward unit normal to Ω_i). Therefore, the divergence theorem gives

$$\begin{aligned} \int_{E \cap \Omega_i} \langle \nabla f_i(x), X(x) \rangle dx &= \int_{\mathcal{F}E \cap \Omega_i} f_i \langle X, \nu_E \rangle d\mathcal{H}^{N-1} \\ &\quad + \int_{\partial\Omega_i} f_i \chi_{E, \nu_{\Omega_i}}^+ \langle X, \nu_{\Omega_i} \rangle d\mathcal{H}^{N-1} - \int_{E \cap \Omega_i} f_i \operatorname{div} X dx. \end{aligned}$$

Summing up on $i = 1, \dots, k$, formula (7) follows.

In order to prove (9), we use (10) with $F(x) = \Phi_t(x)$ and $H_t = H_{\Phi_t}$; we then have

$$P_f(\Phi_t(E)) = \int_{\mathcal{F}E} f(\Phi_t(x)) |H_t(x) \nu_E(x)| d\mathcal{H}^{N-1}$$

and then

$$\begin{aligned} \frac{d}{dt} P_f(\Phi_t(E)) &= \int_{\mathcal{F}E} \frac{d}{dt} (f(\Phi_t(x))) |H_t(x) \nu_E(x)| d\mathcal{H}^{N-1} \\ &\quad + \int_{\mathcal{F}E} f(\Phi_t(x)) \frac{d}{dt} |H_t(x) \nu_E(x)| d\mathcal{H}^{N-1}. \end{aligned}$$

For the second term on the right hand side, we have as in the standard case that

$$\frac{d}{dt} |H_t(x) \nu_E(x)|_{t=0} = \operatorname{div}_{\Sigma} X(x)$$

with $\operatorname{div}_{\Sigma}$ the tangential divergence; since $|H_0(x) \nu_E(x)| = 1$, we have only to compute

$$\frac{d}{dt} f(\Phi_t(x))_{t=0}.$$

We analyse separately the two cases: $x \in \Omega_i$ for some i , and $x \in \Gamma$. For $x \in \Omega_i$, we have that $\Phi_t(x) \in \Omega_i$ for small t , and then

$$\frac{d}{dt} f(\Phi_t(x)) = \langle \nabla f_i(\Phi_t(x)), \frac{d}{dt} \Phi_t(x) \rangle,$$

whence

$$\frac{d}{dt} f(\Phi_t(x))_{t=0} = \langle \nabla f_i(x), X(x) \rangle.$$

For $x \in \Gamma$, we have that, since f is lower-semicontinuous, $f(x) = f_{\nu_{\Gamma}}^{-}(x)$ (with ν_{Γ} unit normal vector of Γ); since we are assuming (8),

$$\begin{aligned} \frac{d}{dt} f(\Phi_t(x))_{t=0} &= \lim_{h \rightarrow 0} \frac{f(\Phi_h(x)) - f_{\nu_{\Gamma}}^{-}(x)}{h} = \lim_{h \rightarrow 0} \frac{f_{\nu_{\Gamma}}^{-}(\Phi_h(x)) - f_{\nu_{\Gamma}}^{-}(x)}{h} \\ &= \langle \nabla f_{\nu_{\Gamma}}^{-}(x), X(x) \rangle \end{aligned}$$

and this completes the proof. \square

Having given first variation formulae, we discuss the stability of isoperimetric sets. In a discontinuous density setting the latter has to be understood as follows: if the variation Φ_t is volume preserving, $V(t) = V(0)$ for all $t > 0$, then perimeter has to increase, i.e. $P(0) \leq P(t)$. This means that if P is differentiable at 0 then $P'(0) \geq 0$. This condition can be strengthened to $P'(0) = 0$ when $\operatorname{spt} X \cap \Gamma = \emptyset$: in fact, in this case we have differentiability of $P(t)$ also when considering the vector field $-X$ instead of X . As a consequence we will obtain necessary conditions on the isoperimetric set at points far from Γ and at points on Γ , as summarised in the following Propositions 2.13 and 2.14.

If we assume some regularity on the isoperimetric set, then the first variation of the perimeter can be rewritten in a different way. Far from Γ , standard regularity holds [22]. The additional regularity we have to require is the \mathcal{H}^{N-1} -almost everywhere \mathcal{C}^2 regularity of Γ and the regularity of traces of $\mathcal{F}E \cap \Omega_i$ on Γ , allowing an integration by parts in (9) in order to eliminate the term $\operatorname{div}_{\Sigma} X$. This operation can be done if we assume the following:

- (r1) for every $i = 1, \dots, k$ the part of the boundary $\Sigma_i = \mathcal{F}E \cap \Omega_i$ is an $(N-1)$ -rectifiable set with an $(N-2)$ -rectifiable boundary $S_i = \partial \Sigma_i$ of finite \mathcal{H}^{N-2} measure, i.e. Σ_i is a normal $(N-1)$ -current: for $x \in S_i$, we denote by $\nu_{S_i}(x)$ the unit normal vector orthogonal to S_i , contained in $T_x \Sigma_i$ and with ν_{S_i} pointing outside Σ_i ;

(r2) $\Sigma_\Gamma = \mathcal{F}E \cap \Gamma$, which is also an $(N-1)$ -rectifiable set, has $(N-2)$ -rectifiable boundary $\sigma = \partial\Sigma_\Gamma$ with finite \mathcal{H}^{N-2} measure, i.e. Σ_Γ is a normal $(N-1)$ -current: we denote by ν_σ the unit normal vector orthogonal to σ , contained in $T\Sigma_\Gamma$ and pointing outside Σ_Γ .

In this case the first variation of the perimeter can be rewritten as

$$\begin{aligned} P'(0) &= \int_\Sigma \langle \nabla\psi^-, \nu_\Sigma \rangle u f^- d\mathcal{H}^{N-1} - (N-1) \int_\Sigma H_\Sigma f^- u d\mathcal{H}^{N-1} \\ &\quad + \int_\sigma f^- \langle X, \nu_\sigma \rangle d\mathcal{H}^{N-2} + \sum_{i=1}^k \int_{S_i} f_i \langle X, \nu_{S_i} \rangle d\mathcal{H}^{N-2}. \end{aligned} \quad (11)$$

For the densities we shall consider in Section 3, **(r1)** and **(r2)** are satisfied, so we shall not enter into further details and simply say, if they hold true, that E has *regular trace* on Γ .

We now give some necessary condition for the isoperimetric set; first of all, as already mentioned in Remark 2.3, the generalised mean curvature

$$H_\psi(x) = (N-1)H_\Sigma(x) - \langle \nabla\psi(x), \nu_\Sigma(x) \rangle \quad (12)$$

is equal to a constant H_0 for any $x \in \Sigma \setminus \Gamma$.

Moreover, we have the next result, giving a sort of counterpart of the celebrated Snell refraction law of optics. It follows from a well-known fact, that the tangent cone to an isoperimetric set must be perimeter-minimising without volume constraint (see for instance [24, Section 9]). Anyway, we give the proof for reader's convenience.

Proposition 2.13 *In the same notation as Proposition 2.11, let E be an isoperimetric set with regular traces on Γ ; assume that Σ passes through Γ transversally at a point $x \in S_i \cap S_j$ where S_i, S_j and Γ have tangent spaces, i.e. the vectors ν_{S_i}, ν_{S_j} and ν_Γ exist. Then the vector $f_i(x)\nu_{S_i}(x) + f_j(x)\nu_{S_j}(x)$ is parallel to $\nu_\Gamma(x)$, that is*

$$f_i(x)\langle \nu_{S_i}(x), \nu \rangle = -f_j(x)\langle \nu_{S_j}(x), \nu \rangle$$

for any $\langle \nu, \nu_\Gamma \rangle = 0$. In particular the Snell refraction law

$$\frac{\cos \alpha_+}{\cos \alpha_-} = \frac{f_{\nu_\Gamma}^-(x)}{f_{\nu_\Gamma}^+(x)} \quad (13)$$

holds. Here, α_+ and α_- are, respectively, the two angles at x between Γ and Σ from the two opposite sides of Γ (see Figure 1).

PROOF. First of all, we notice that $\Sigma \setminus \Gamma \neq \emptyset$, since otherwise $\Sigma_i = \emptyset$ for any i and then $S_i = \emptyset$. Let $x_1 := x$ be as in the statement; consider a second point $x_2 \in \Sigma \setminus \Gamma$ and a sequence of functions $\varrho_{h,i}^r$, $i = 1, 2$ such that

$$\varrho_{h,i}^r(y) \rightarrow \frac{1}{\omega_{N-1} r^{N-1}} \chi_{B(x_i, r)}(y), \quad i = 1, 2$$

and then consider the vector field

$$X_h^r(y) = \varrho_{h,1}^r(y)\nu_1 + c\varrho_{h,2}^r(y)\nu_2$$

for some unit vectors ν_1 and ν_2 to be chosen in a convenient way. The constant c has to be determined by requiring that $V'(0) = 0$; using (11) and taking into account the continuity of the functions f_i in $\bar{\Omega}_i$, as $h \rightarrow +\infty$ we get

$$\begin{aligned} 0 &\leq \frac{c}{\omega_{N-1} r^{N-1}} \int_{\Sigma \cap B(x_2, r)} \langle \nabla\psi^-, \nu_\Sigma \rangle \langle \nu_2, \nu_\Sigma \rangle f^- d\mathcal{H}^{N-1} \\ &\quad + \frac{1}{\omega_{N-1} r^{N-1}} \int_{S_i \cap B(x_1, r)} f_i \langle \nu_1, \nu_{S_i} \rangle d\mathcal{H}^{N-2} + \\ &\quad + \frac{1}{\omega_{N-1} r^{N-1}} \int_{S_j \cap B(x_1, r)} f_j \langle \nu_1, \nu_{S_j} \rangle d\mathcal{H}^{N-2}. \end{aligned}$$

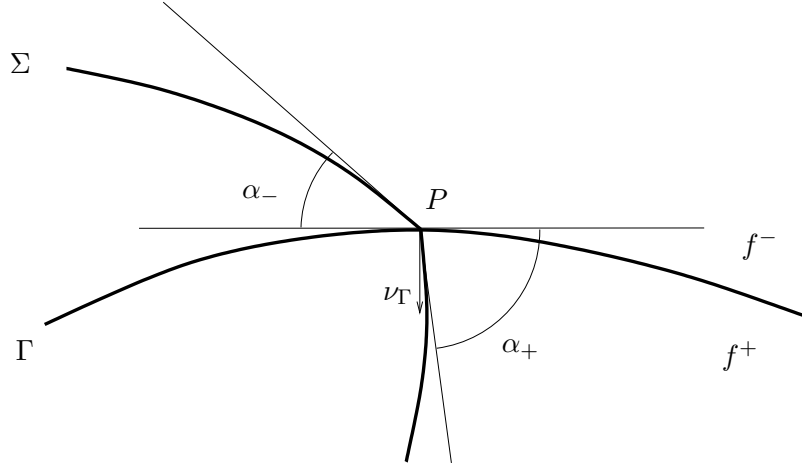


Figure 1: Snell refraction law.

Multiplying the previous equation by r and taking the limit as $r \rightarrow 0$, we obtain

$$\langle \nu_1, f_i(x_1)\nu_{S_i}(x_1) + f_j(x_1)\nu_{S_j}(x_1) \rangle = f_i(x_1)\langle \nu_1, \nu_{S_i}(x_1) \rangle + f_j(x_1)\langle \nu_1, \nu_{S_j}(x_1) \rangle \geq 0. \quad (14)$$

We are assuming that Γ has a tangent hyperplane at x_1 , and then there exists a normal vector $\nu_\Gamma(x_1)$ with the usual agreement that $f_{\nu_\Gamma(x_1)}^- = \min\{f_i(x_1), f_j(x_1)\}$ and $f_{\nu_\Gamma(x_1)}^+ = \max\{f_i(x_1), f_j(x_1)\}$. Recalling Proposition 2.11, we have an admissible variation for any ν_1 with the condition $\langle \nu_1, \nu_\Gamma(x_1) \rangle < 0$. The validity of (14) for any such ν_1 implies then that the vector $f_i(x_1)\nu_{S_i}(x_1) + f_j(x_1)\nu_{S_j}(x_1)$ is a positive multiple of ν_Γ and

$$\langle \nu_1, f_i(x_1)\nu_{S_i}(x_1) + f_j(x_1)\nu_{S_j}(x_1) \rangle = 0,$$

for each $\langle \nu_1, \nu_\Gamma \rangle = 0$; this is the Snell law, since by transversality of Σ at x , we can take ν_1 as the unique vector (up to a sign) orthogonal to ν_Γ and to $T_{x_1}(S_i \cap S_j)$. \square

Proposition 2.13 will be of crucial importance in Section 3, where we will consider piecewise constant densities. Intuitively, Proposition 2.13 says that, when ∂E crosses Γ transversally, a corner is formed according to Snell law. Notice also that the angle α_+ must be greater than $\arccos(f_{\nu_\Gamma}^-(x)/f_{\nu_\Gamma}^+(x))$ and less than the supplementary of this angle. We will sometimes use (13) in an equivalent form, where the cosines of the angles α_+, α_- are substituted by the sines of the complementary angles, i.e. the ones formed by the normals to Γ and Σ .

When the crossing between Σ and Γ is not transversal and Σ touches Γ in the region σ defined in **(r2)**, we have the following result.

Proposition 2.14 *Let E be an isoperimetric set with regular trace on Γ ; assume that for $x \in \sigma \cap S_i$, ν_σ, ν_{S_i} and ν_Γ exist, i.e. σ, S_i and Γ have tangent planes. If $f_i(x) > f_{\nu_\Gamma}^-(x)$, then*

$$\langle \nu_\sigma(x), \nu_{S_i}(x) \rangle \geq -\frac{f_{\nu_\Gamma}^-(x)}{f_i(x)}, \quad (15)$$

that is, $\Sigma_i = \Sigma \cap \Omega_i$ meets Γ at an angle at most $\arccos\left(\frac{f_{\nu_\Gamma}^-(x)}{f_i(x)}\right)$; if $f_i(x) = f_{\nu_\Gamma}^-(x)$, then $\nu_\sigma(x) = -\nu_{S_i}(x)$, that is, Σ_i is tangential to Γ .

PROOF. The proof is similar as for Proposition 2.13; setting again $x_1 = x$ and considering

$$X_h^r(x) = \varrho_{h,1}^r(x)\nu_1 + c\varrho_{h,2}^r(x)\nu_2$$

with $\varrho_{h,i}^r$, $i = 1, 2$, as before, by taking the limits as $h \rightarrow +\infty$ and $r \rightarrow 0$ one gets

$$f_{\nu_\Gamma}^-(x_1)\langle \nu_1, \nu_\sigma(x_1) \rangle + f_i(x_1)\langle \nu_1, \nu_{S_i}(x_1) \rangle \geq 0. \quad (16)$$

This inequality holds for any ν_1 with $\langle \nu_1, \nu_\Gamma \rangle > 0$; if $f_i(x_1) > f_{\nu_\Gamma}^-(x_1)$, then by taking $\nu_1 = \nu_{S_i}(x_1)$ we obtain (15). Otherwise, if $f_i(x_1) = f_{\nu_\Gamma}^-(x_1)$, then (16) reduces to

$$\langle \nu_1, \nu_\sigma(x_1) + \nu_{S_i}(x_1) \rangle \geq 0$$

for any $\langle \nu_1, \nu_\Gamma \rangle < 0$. Since $\langle \nu_\sigma, \nu_\Gamma \rangle = 0$, the only possibility is that $\nu_\sigma(x_1) + \nu_{S_i}(x_1) = 0$. \square

Remark 2.15 The previous proofs can be summarised and generalised as follows. Let us assume that the surface Γ admits a unique tangent cone at the point x_0 and let us denote by O_i the blow-up at x_0 of the region Ω_i . If the isoperimetric set passes through Γ at x_0 , then there holds

$$\langle f_i \nu_{S_i} + f_j \nu_{S_j}, \nu \rangle \geq 0$$

for any direction ν contained in O_i where f_i is minimal among the f_j 's such that $x_0 \in \bar{\Omega}_j$. This means that if Γ has a tangent plane at x_0 , Proposition 2.13 holds since ν can range over a half-space; moreover, O_i cannot contain more than a half-space, otherwise we would have

$$f_i \nu_{S_i} + f_j \nu_{S_j} = 0$$

which is never possible if $f_i \neq f_j$. Finally, if O_i is less than a half-space, then the conclusion is that $f_i \nu_{S_i} + f_j \nu_{S_j}$ is contained in a sector.

3 Some piecewise constant densities

In this section we consider some particular piecewise regular densities on Euclidean space, mainly piecewise constant densities. Section 3.1 focuses on a density in \mathbb{R}^N taking value one in a half-space, and defined in the other half-space by a certain real function with values greater than one. In Section 3.2 we study the case of density one in a planar strip and a greater constant outside the strip. Finally, in Section 3.3 we deal with a planar density taking value one outside a ball and a different constant value inside.

3.1 The half-space

In this section we will focus our attention on the half-space density in \mathbb{R}^N defined by

$$f(x) = 1 + (\lambda(x_N) - 1)\chi_{\{x_N > 0\}}(x)$$

where $\lambda : \mathbb{R} \rightarrow [1, +\infty)$ is a bounded measurable function with $\lambda(x_N) > 1$ for $x_N > 0$. Observe that the weighted volume and perimeter coincide with the Euclidean ones in $\{x_N \leq 0\}$. We give the following preliminary result.

Lemma 3.1 *Let E be a bounded set; then there exists a set E' entirely contained in $\{x_N < 0\}$ with $|E'| = |E|_f$ and $P(E') \leq P_f(E)$, with equality if and only if almost all of E is contained in $\{x_N \leq 0\}$.*

PROOF. Given a bounded set $E \subset \mathbb{R}^N$, we write $E_1 := E \cap \{x_N < 0\}$ and $E_2 := E \cap \{x_N \geq 0\}$; we claim that if $|E_2| > 0$, then there exists a set in $\{x_N < 0\}$ with the same volume and strictly less perimeter than E . The volume of E is given by

$$|E|_f = |E_1| + \int_{E_2} \lambda(x_N) dx.$$

We define the transformation $F : \mathbb{R}^N \rightarrow \mathbb{R}^N$ by $F(x) = F(x', x_N) = (x', F_N(x_N))$, with

$$F_N(x_N) = \begin{cases} x_N & \text{if } x_N < 0 \\ \int_0^{x_N} \lambda(t) dt & \text{if } x_N \geq 0. \end{cases}$$

For this transformation we have that JF is the identity I_N on \mathbb{R}^N if $x_N < 0$, while for $x_N > 0$ we have

$$JF(x) = \begin{pmatrix} I_{N-1} & 0 \\ 0 & \lambda(x_N) \end{pmatrix}.$$

This means that the set $\hat{E} := F(E_2)$ has the Lebesgue measure

$$|\hat{E}| = |E_2|_f. \quad (17)$$

Regarding the Euclidean perimeter of \hat{E} , by Lemma 2.12

$$\begin{aligned} P(\hat{E}, \{x_N > 0\}) &= \int_{\mathcal{F}E \cap \{x_N > 0\}} \sqrt{\lambda(x_N)^2(\nu_1^2 + \dots + \nu_{N-1}^2) + \nu_N^2} d\mathcal{H}^{N-1} \\ &\leq \int_{\mathcal{F}E \cap \{x_N > 0\}} \lambda(x_N) d\mathcal{H}^{N-1} \end{aligned} \quad (18)$$

with equality if for \mathcal{H}^{N-1} -a.e. $x \in \mathcal{F}E$ we have $\nu_N = 0$. This cannot happen unless either $|E_2| = 0$ or E_2 is a vertical cylinder; but in this second case, E would not be bounded. Since E is bounded, it is contained in a strip $\{|x_N| < r\}$ for some positive $r > 0$. By translating down by r in the N -th direction the set $F(E)$, we can construct a set contained in $\{x_N < 0\}$, with the same volume (in view of (17)) as E and less or equal perimeter (18), which proves the claim. \square

Theorem 3.2 *For given volume, an isoperimetric set exists and is a round ball contained in the half-space $\{x_N \leq 0\}$.*

PROOF. We may consider a minimising sequence F_h of smooth sets, that is F_h with $|F_h|_f = v$ and $P_f(F_h) \leq \alpha + \frac{1}{h}$ where

$$\alpha = \inf\{P_f(E) : |E|_f = v\}.$$

If F_h is bounded, we set $E_h = F_h$; otherwise, if F_h is not bounded, there exists $t > 0$ such that $\mathcal{H}^{N-1}(\partial F_h \setminus \bar{B}_t) < \frac{1}{h}$ and

$$\mathcal{H}^{N-1}(F_h \cap \partial B_t) = \mathcal{H}^{N-1}(\partial(F_h \setminus B_t) \cap \partial B_t) = \mathcal{H}^{N-1}(\partial(F_h \cap B_t) \cap \partial B_t) < \frac{1}{h},$$

where we used the fact that the first two equalities hold for a.e. $t > 0$. By the Euclidean isoperimetric inequality, we have that

$$|F_h \setminus B_t| < \frac{c_1}{h^{\frac{N}{N-1}}}.$$

We can then consider a ball $B_r(x_0)$ with r chosen in such a way that

$$|B_r(x_0)| = |F_h \setminus B_t|_f < \frac{c_2}{h^{\frac{N}{N-1}}}$$

and x_0 such that $B_r(x_0)$ is contained in $\{x_N < 0\}$ and not intersecting B_t . Notice that $r \leq \frac{c_3}{h^{1/(N-1)}}$ and so the set

$$E_h = (F_h \cap B_t) \cup B_r(x_0)$$

has the properties $|E_h|_f = v$ and

$$\begin{aligned} P_f(E_h) &= P_f(F_h \cap B_t) + \int_{\partial(F_h \cap B_t) \cap \partial B_t} \lambda d\mathcal{H}^{N-1} + P(B_r(x_0)) \\ &\leq P_f(F_h) + \frac{c_4}{h} \end{aligned}$$

that is E_h is also a minimising sequence with bounded sets.

By Lemma 3.1, we may assume that E_h is contained in $\{x_N < 0\}$, where the density $f = 1$. By the standard isoperimetric inequality, round balls are isoperimetric. By a second application of Lemma 3.1, round balls in $\{x_N \leq 0\}$ are uniquely isoperimetric. \square

Remark 3.3 When $\lambda : \mathbb{R}^N \rightarrow [1, +\infty)$ does not depend only on the last coordinate, then it is no longer true in general that round balls in $\{x_N \leq 0\}$ are isoperimetric. For instance, for the density

$$f(x) = 1 + \mu \chi_{B(2e_N, 1)}(x) \quad (19)$$

with $\mu > 0$, $B(2e_N, 1)$ is isoperimetric. We shall discuss in Section 3.3 the case of the density (19) in the plane \mathbb{R}^2 .

3.2 The strip

In this section we shall consider the “strip” density in \mathbb{R}^N given by

$$f(x) = \begin{cases} 1 & \text{if } |x_N| \leq 1 \\ \lambda \in \mathbb{R} & \text{if } |x_N| > 1 \end{cases}$$

with $\lambda > 1$.

Remark 3.4 For the density

$$f(x) = \begin{cases} \lambda & \text{if } |x_N| < 1 \\ 1 & \text{if } |x_N| \geq 1 \end{cases}$$

isoperimetric sets exist and are round balls outside the slab. Indeed, Lemma 3.1 shows that any set E may be replaced by a set outside the slab with no more perimeter, with equality if and only if the boundary of E is vertical inside the slab. But if this fact occurs, the original set E will be an unbounded vertical cylinder or will not have constant curvature, and so cannot be isoperimetric. This allows us to consider only sets contained in $\{|x_N| > 1\}$.

We start with an existence result for the planar case.

Proposition 3.5 *For the above strip density in the case $N = 2$, an isoperimetric set exists for any prescribed volume and is connected.*

PROOF. Take a minimising sequence E_h of smooth sets with $|E_h|_f = v$ and each E_h consisting of finitely many components. By Lemma 3.1 we may assume that any connected component of E_h either has non-empty intersection with the lines $\{y = 1\}$ and $\{y = -1\}$ or is contained in $\{-1 \leq y \leq 1\}$.

Move horizontally (or also vertically, but remaining inside the strip, in case of a ball contained in it) the connected components of E_h until they touch each other tangentially; using a cutting argument, replace E_h with a connected one. Move horizontally the sets E_h to have barycenter $(0, y_h)$; the sets E_h are connected and so, using the diameter estimate (1), they satisfy $|y_h| \leq P_f(E_h) + 1$. This means that all the sets E_h are contained in a big ball, and a compactness argument implies the existence of an isoperimetric region: were it not connected, we could use one of the above “components translation” argument to diminish perimeter. \square

We can also state the following result that holds in any dimension N , under the assumption that the isoperimetric set exists.

Proposition 3.6 *Let E be an isoperimetric set for given volume $v > 0$, for the above strip density. Then, there exists an isoperimetric set for volume v which is rotationally symmetric with respect to the x_N -axis. Moreover, the intersection of E with almost every horizontal hyperplane is a round ball, E has regular trace on $\{|x_N| = 1\}$ and E is either entirely contained in $\{-1 < x_N < 1\}$ or it will touch simultaneously both sets $\{x_N \geq 1\}$ and $\{x_N \leq -1\}$.*

PROOF. The argument is based on Schwarz symmetrisation (see [25, § 3.2]), which can be applied in this setting; define $E = E_1 \cup E_2 \cup E_3 \cup S_1 \cup S_{-1}$ with

$$E_1 = E \cap \{x_N > 1\}, \quad E_2 = E \cap \{-1 < x_N < 1\}, \quad E_3 = E \cap \{x_N < -1\}$$

and

$$S_{\pm 1} = \{x \in \mathbb{R}^N : x_N = \pm 1, |\chi_{E, e_N}^+(x) - \chi_{E, e_N}^-(x)| = 1\}. \quad (20)$$

We also define the sets

$$S_1^\pm = \{x \in \mathbb{R}^N : x_N = 1, \chi_{E, e_N}^\pm = 1\}, \quad S_{-1}^\pm = \{x \in \mathbb{R}^N : x_N = -1, \chi_{E, e_N}^\pm = 1\}.$$

Notice that

$$\begin{aligned} P_f(E) &= \mathcal{H}^{N-1}(S_1 \cup S_{-1}) + \mathcal{H}^{N-1}(\mathcal{F}E \cap \{-1 < x_N < 1\}) + \\ &\quad + \lambda \mathcal{H}^{N-1}(\mathcal{F}E \cap \{x_N > 1\}) + \lambda \mathcal{H}^{N-1}(\mathcal{F}E \cap \{x_N < -1\}). \end{aligned}$$

We can now consider the Schwarz-symmetrised set of E , i.e. the set E^* such that $E^* \cap \{x_N = \bar{y}\}$ is a round ball centered at $(0, \dots, 0, \bar{y})$ with measure equal to $\mathcal{H}^{N-1}(E \cap \{x_N = \bar{y}\})$. One has

$$|E^*| = |E|, \quad P(E^*) \leq P(E) \quad (21)$$

and almost every horizontal slice of E is a round ball in case $P(E^*) = P(E)$ (see [11, § 1] or [28]). We notice that (21) holds also on the sets E_i , $i = 1, 2, 3$. As

$$\begin{aligned} \mathcal{H}^{N-1}(S_{\pm 1}^*) &= \mathcal{H}^{N-1}(S_{\pm 1}^{*+} \Delta S_{\pm 1}^{*-}) = |\mathcal{H}^{N-1}(S_{\pm 1}^+) - \mathcal{H}^{N-1}(S_{\pm 1}^-)| \\ &= \left| \int_{\mathbb{R}^{N-1}} (\chi_{E, e_N}^+ - \chi_{E, e_N}^-) d\mathcal{H}^{N-1} \right| \\ &\leq \int_{\mathbb{R}^{N-1}} |\chi_{E, e_N}^+ - \chi_{E, e_N}^-| d\mathcal{H}^{N-1} = \mathcal{H}^{N-1}(S_{\pm 1}), \end{aligned}$$

where $S_{\pm 1}^*$ and $S_{\pm 1}^{\pm}$ are defined as in (20) with E^* instead of E , we can conclude, since f is constant along horizontal directions, that

$$|E^*|_f = |E|_f \quad \text{and} \quad P_f(E^*) \leq P_f(E). \quad (22)$$

Since E is isoperimetric, we have the equality in (22), and so E^* is an isoperimetric solution for volume v , which is in fact rotationally symmetric with respect to the x_N -axis. Moreover, we also deduce that the intersection of E with almost every horizontal hyperplane is a round ball.

The regularity of the trace of E on $\{|x_N| = 1\}$ follows since the intersections of the isoperimetric set with the planes $\{x_N = 1 \pm \varepsilon\}$ (similar argument on the jump part $\{x_N = -1\}$) are round balls converging in $L^1(\mathbb{R}^{N-1})$ as $\varepsilon \rightarrow 0$ (see for instance Giusti [19, Theorem 2.11]); therefore the traces on the jump set are round balls.

For the last sentence, if $|E \cap \{x_N > 1\}| > 0$ and $d(E, \{x_N < -1\}) > 0$, we can move down E using Lemma 3.1, and modify E into a set \tilde{E} with same volume and less perimeter. \square

Remark 3.7 Notice that Proposition 3.6 implies that the isoperimetric problem for the “strip” density is essentially two-dimensional, meaning that the boundary of the isoperimetric set is given by the rotation on the vertical axis of the graph of a generating function $h = h(x_N)$. Let us stress that this constitutes a different problem with respect to the “strip” case with $N = 2$, since now the isoperimetric problem to be considered has different densities on volume and perimeter, more precisely

$$\begin{aligned} \tilde{V}_f(E) &= \omega_{N-1} \int_{\mathbb{R}} f(t) h^{N-1}(t) dt, \\ \tilde{P}_f(E) &= (N-1) \omega_{N-1} \int_{\mathbb{R}} f(t) h(t)^{N-2} \sqrt{1 + h'(t)^2} dt. \end{aligned}$$

We will now focus on the case $N = 2$. In this situation, we know that isoperimetric sets exist, are connected and that almost all horizontal slices are intervals (from Propositions 3.5 and 3.6). Furthermore, Snell law (13) and constant geodesic curvature condition are satisfied. Therefore, we have that the boundary of any isoperimetric set E is a piecewise regular curve γ with regular pieces consisting of either arcs γ_i of some circles with the same curvature or line segments contained in $\{|y| = 1\}$. Moreover, the part of γ contained in $\{(x, y) : y > 1\}$ is at most one arc of a circle; the same holds in $\{(x, y) : y < -1\}$, while there can be two arcs inside the strip. This allows to classify the isoperimetric candidates which are rotationally symmetric in this case.

Lemma 3.8 *For the strip density for $N = 2$ the only isoperimetric candidates with vertical reflective symmetry (see Figure 2) are, up to density-preserving isometries:*

- (i) balls contained in the strip;
- (ii) pieces of the strip bounded left and right by two semicircles, and top and bottom by two segments on $\{|y| = 1\}$;
- (iii) sets bounded by three circular arcs with the same radius and a segment contained in $\{y = -1\}$. One of these arcs is contained in $\{y > 1\}$, and the other two are contained in the strip, meeting the segment tangentially and the other arc according to the Snell law (13). The segment can degenerate to a single point; in this case, the set is a circle with radius 2 and center on the line $\{y = 1\}$;
- (iv) sets bounded by four circular arcs with the same radius: two of them contained in the strip; the other two horizontally symmetric, one contained in $\{y > 1\}$ and another contained in $\{y < -1\}$, satisfying the Snell law.

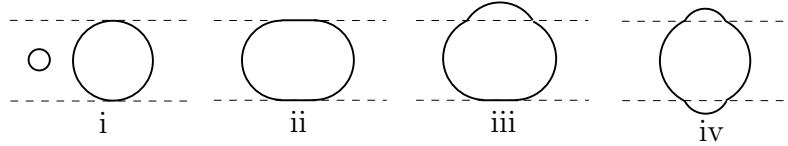


Figure 2: The candidate isoperimetric sets.

PROOF. Let us briefly sketch how to restrict to such candidates. If an isoperimetric set is completely contained in the strip it is easy to reduce to candidates (i) and (ii). Otherwise, by symmetry we can suppose there is an arc in $\{y > 1\}$ meeting the strip; Lemma 3.1 allows us to discard balls outside the strip. Unless the contact angle is not $\arccos 1/\lambda$, the arc is continued (starting from each of its endpoints according to Snell law) by two arcs inside the strip: they have to meet the line $\{y = -1\}$, or we could use construction of Lemma 3.1. If the meeting is tangential there are two possibilities: the boundary can be continued by a segment and then a tangential arc in the strip (case (iii)) or immediately by an arc in the strip. In this last case there would be an arc inside the strip tangent to $\{y = -1\}$ plus another arc in $\{y > 1\}$: they would have the same curvature and two common endpoints, so they must form a unique complete circle or be symmetric with respect to the line $\{y = 1\}$. This contradicts the Snell law unless the meeting angle with $\{y = 1\}$ is $\frac{\pi}{2}$, i.e., the set is a ball of radius 2. There is a priori another possibility (see Figure 3): the meeting with $\{y = -1\}$ is tangential and the boundary is continued by a segment and then an arc in $\{y < -1\}$ with angle $\arccos \frac{1}{\lambda}$. We will exclude this possibility in Step 1 below.

If the meeting with $\{y = -1\}$ is not tangential there must be an arc in $\{y < -1\}$: this is case (iv). Step 2 below will prove that this set must be also symmetric with respect to the horizontal axis $\{y = 0\}$.

If the upper arc meets $\{y = 1\}$ with angle $\arccos \frac{1}{\lambda}$ there are two possibilities for each of its endpoints: it is continued by a segment and then by a tangential arc, or immediately by a tangential

arc. Again, these arcs must meet the line $\{y = -1\}$: if the meeting is not tangential there should be an arc in $\{y < -1\}$. This configuration is symmetric to the one of Figure 3, which we are going to exclude in Step 1. If the meeting is tangential, the arc's radius must be 1 and one must have also a segment on $\{y = -1\}$ and, possibly, another arc on $\{y < -1\}$ with meeting angle $\arccos \frac{1}{\lambda}$ as in Figure 5: this set cannot be isoperimetric as shown in Step 3.

A little problem could be given by the upper arc meeting $\{y = 1\}$ with angle $\pi - \arccos \frac{1}{\lambda}$ (see Figure 8 in Theorem 3.15): the continuation would be a segment on $\{y = 1\}$ (no inner arc is allowed by Snell law). This set would be entirely contained in $\{y \geq 1\}$, thus not being isoperimetric.

Step 1. We will show that the configuration of Figure 3 is geometrically impossible. This supposed configuration consists of two segments in $\{y = -1\}$ (each of them possibly reducing to a single point) and four circular arcs with the same radius; two of them vertically symmetric, contained in the strip and tangent to $\{y = -1\}$ but not to $\{y = 1\}$; the other two contained in each component of $\mathbb{R}^2 \setminus \{|y| < 1\}$, all satisfying the Snell law. In particular, the arc in $\{y < -1\}$ meets the strip with angle $\arccos \frac{1}{\lambda}$.

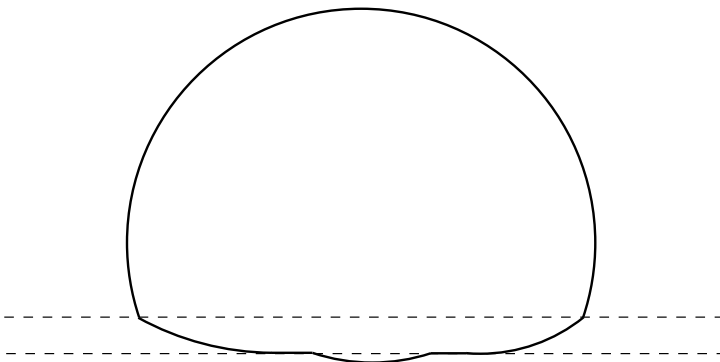


Figure 3: A not feasible configuration.

We can think of this configuration as obtained from a configuration (iii) by adding the arc in $\{y < -1\}$; we will show that this arc is too long to fit. The chord associated with this arc rests upon the segment on $\{y = -1\}$ which appears in (iii). This chord has length $2R\sqrt{1 - \frac{1}{\lambda^2}}$, $R \in [1, +\infty[$ being the common radius of the arcs. We will get a contradiction if we show that the segment of configuration (iii) is shorter. Indeed, its length is equal to

$$\begin{aligned}
 & 2R \left(\sqrt{1 - \frac{1}{\lambda^2} \left(1 - \frac{2}{R}\right)^2} - \sqrt{1 - \left(1 - \frac{2}{R}\right)^2} \right) \\
 = & 2R \left(\sqrt{\left(1 - \frac{1}{\lambda^2}\right) + \frac{1}{\lambda^2} \delta} - \sqrt{\delta} \right) \\
 \leq & 2R \left(\sqrt{1 - \frac{1}{\lambda^2}} + \left(\frac{1}{\lambda} - 1\right) \sqrt{\delta} \right), \tag{23}
 \end{aligned}$$

where we put $\delta := \frac{4}{R} - \frac{4}{R^2} \geq 0$ (since $R \geq 1$) and used the inequality $\sqrt{a+b} \leq \sqrt{a} + \sqrt{b}$. The last term in (23) is strictly less than $2R\sqrt{1 - \frac{1}{\lambda^2}}$ unless $\delta = 0$, i.e. $R = 1$. The latter case $R = 1$ will be discarded in the following Step 3.

Step 2. Here we show that the four-arcs configuration of type (iv) must be symmetric with respect to the horizontal line $\{y = 0\}$. As in Figure 4, let P be the center of the arc in $\{y > 1\}$, and let A, C be its endpoints on the line $\{y = 1\}$. Similarly, Q is the center of the lower arc and B, D its endpoints. By O we denote the center of the left arc inside the strip; K belongs to this arc and is chosen so that OK is horizontal.

It will be convenient to set

$$\alpha := \widehat{AOK}, \quad \beta := \widehat{BOK}, \quad \gamma := \widehat{CAP}, \quad \delta := \widehat{DBQ}$$

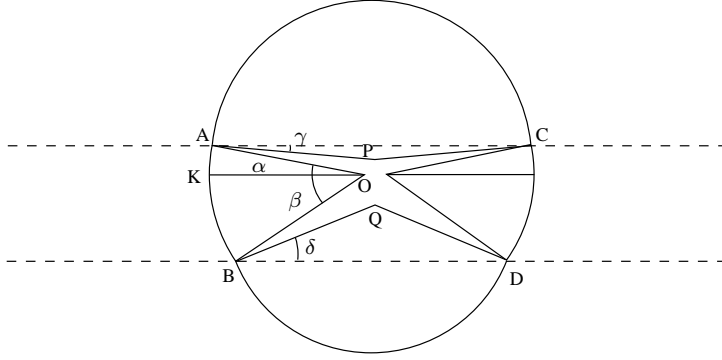


Figure 4: A four-arcs configuration must be horizontally symmetric.

and $R := AP = AO = BO = BQ$ is the common radius of the arcs. Notice that R and α uniquely determine the configuration; indeed, since the height of the strip is 2,

$$R(\sin \alpha + \sin \beta) = 2, \quad \text{i.e.} \quad \sin \beta = \frac{2}{R} - \sin \alpha. \quad (24)$$

Moreover, α, γ are also the angles formed by the vertical line passing through A and the two arcs meeting at A ; similarly for β, δ at B . Thus the Snell law

$$\frac{\sin \alpha}{\lambda} = \sin \gamma, \quad \frac{\sin \beta}{\lambda} = \sin \delta \quad (25)$$

holds. When α is negative (i.e. O lies above the line $\{y = 1\}$) computations are the same.

Recall that the configuration must be symmetric with respect to a vertical line, which must contain P and Q . Equivalently, P and Q must belong to such axis: they lie “one above the other”. Equivalently, the first component of the oriented segment $OP = OA - PA$ is equal to the one of $OQ = OB - QB$, i.e. $R(\cos \alpha - \cos \gamma) = R(\cos \beta - \cos \delta)$. Taking into account (24) and (25), we can exploit this condition to get

$$\sqrt{1 - s^2} - \sqrt{1 - \frac{s^2}{\lambda^2}} = \sqrt{1 - (\frac{2}{R} - s)^2} - \sqrt{1 - \frac{1}{\lambda^2}(\frac{2}{R} - s)^2},$$

where we have set $s := \sin \alpha$. Let us study the function $\psi : [-1, 1] \rightarrow \mathbb{R}$ defined by $\psi(s) := \sqrt{1 - s^2} - \sqrt{1 - \frac{s^2}{\lambda^2}}$. It is an even map and

$$\psi'(s) = -\frac{s}{\sqrt{1 - s^2}} + \frac{s}{\lambda\sqrt{\lambda^2 - s^2}} = s \frac{\sqrt{1 - s^2} - \lambda\sqrt{\lambda^2 - s^2}}{\lambda\sqrt{1 - s^2}\sqrt{\lambda^2 - s^2}}$$

is negative for $s > 0$ and positive for $s < 0$. Thus ψ is even, increasing in $[-1, 0[$ and decreasing in $]0, 1]$. In order to have $\psi(s) = \psi(\frac{2}{R} - s)$ it necessarily holds that $s = \pm(\frac{2}{R} - s)$, whence $s = 1/R$. This condition corresponds to $\alpha = \beta = \arcsin \frac{1}{R}$, which immediately implies symmetry with respect to $\{y = 0\}$.

Step 3. We have to discard sets E as in Figure 5 bounded by: one arc in $\{y > 1\}$ and/or one in $\{y < -1\}$ meeting the strip with angle $\arccos \frac{1}{\lambda}$; one or two segments on $\{y = 1\}$ and one/two on $\{y = -1\}$ (any of them can be a single point); two arcs in the strip meeting tangentially the segments. Notice that the radius of any of the four arcs is 1, since the inner ones are tangent to $\{|y| = 1\}$.

Set $\alpha_\lambda := \arccos \frac{1}{\lambda}$. Cut from E the region enclosed by one of the arcs outside the strip. In this way we lose area $(\alpha_\lambda - \sin \alpha_\lambda \cos \alpha_\lambda)\lambda$. Since the arc disappears, but a segment is created, we lose perimeter $2\lambda\alpha_\lambda - 2\sin \alpha_\lambda$. We restore area in the following way: “enlarge” E horizontally until area is restored, for example by translating the right arc inside the strip on the right. Two segments



Figure 5: A not minimising configuration.

(one on $\{y = 1\}$ and one on $\{y = -1\}$) are created; their length L must satisfy the restoring-area condition

$$2L = (\alpha_\lambda - \sin \alpha_\lambda \cos \alpha_\lambda)\lambda = \lambda \alpha_\lambda - \sin \alpha_\lambda.$$

This operation produces a growth of perimeter equal to $2L$. To show that we have decreased perimeter we must check that

$$\lambda \alpha_\lambda - \sin \alpha_\lambda < 2\lambda \alpha_\lambda - 2 \sin \alpha_\lambda$$

or equivalently that

$$\sin \alpha_\lambda < \lambda \alpha_\lambda,$$

which is always satisfied. \square

Next result assures that any isoperimetric set in this setting must be vertical reflective symmetric.

Proposition 3.9 *Let E be an isoperimetric region for the strip density. Then, E has vertical reflective symmetry.*

PROOF. Consider the symmetrised set E^* of E , which will be of one of the types described in Lemma 3.8. If E^* is of type (i), then E is entirely contained in the strip, and it follows trivially that it must be a ball, thus symmetric. If E^* is of type (ii), then the part of ∂E contained in $\{|y| = 1\}$ consists of a segment in $\{y = 1\}$ and another one in $\{y = -1\}$, both of equal length. The upper segment must be continued left and right by two tangential arcs of the same radius (since curvature is constant and Snell law holds). This already gives the symmetry of E (we are also using that horizontal slices of E are intervals). Finally, if E^* is of type (iii) or (iv), we proceed analogously: the part of ∂E contained in $\{y > 1\}$ is an arc of a circle, which must be continued by two arcs of the same radius inside the strip, forming identical angles (note that segments in $\{y = 1\}$ are not allowed, since E^* have not such segments); this yields the desired symmetry. \square

Remark 3.10 The vertical reflective symmetry of an isoperimetric set E which produces a set E^* of type (ii) after Schwarz symmetrisation also follows from the following argument: call $L > 0$ the length of the top slice, and remove an interval of length L from the right endpoint of each horizontal slice of E . The resulting set has the same volume and perimeter that the biggest ball inside the strip, so it must coincide with that ball. Adding now the removed intervals, we get that the original set E is symmetric. On the other hand, in case that E^* consists of a set of type (iii) or (iv), the portion of ∂E in $\{y > 1\}$ must be optimal for the free boundary problem (fixing the corresponding segment on $\{y = 1\}$), so it must be an arc of a circle; for case (iv), an identical arc will appear in $\{y < -1\}$. As pieces of ∂E contained in $\{y=1\}$ are not allowed in these cases, the symmetry of E follows since inside the strip we must also have the optimal configuration for the fixed boundary segments.

Remark 3.11 Recall that the horizontal slices of E are intervals in view of Proposition 3.6. Consider the symmetrised set E^* , which will be one of those sets described in Lemma 3.8; it is clear that the length of the horizontal slices of E^* is a continuous positive function of y , and so the same property holds for E . This also suffices to conclude, by using [11, Th.1.3], that E has vertical symmetry.

In view of Lemma 3.8 and Proposition 3.9, we have completely classified the isoperimetric candidates for the strip density. We will now analyse numerically their behaviour. Our computations below lead to the following Conjecture 3.12. Theorem 3.16 proves everything except the elimination of sets of type (iv).

Conjecture 3.12 *Given \mathbb{R}^2 with the strip density, 1 in the strip $\{|y| \leq 1\}$ and $\lambda > 1$ outside, there exists a value $v_0 > \pi$ such that the isoperimetric sets are:*

- (a) balls of type (i) for areas less than π ;
- (b) sets of type (ii) for values of the area in $[\pi, v_0]$;
- (c) sets of type (iii) for areas greater than v_0 .

It is not difficult to compare the perimeters of the above candidates (i), (ii), (iii) and (iv), for equal volumes. For a ball in the strip enclosing area $v \leq \pi$, its perimeter is given by $P_i(v) = 2\sqrt{\pi v}$; and a set of type (ii) enclosing area $v \geq \pi$ has perimeter given by $P_{ii}(v) = v + \pi$.

On the other hand, by using the Snell law and, for instance, computations in [17, Prop. 2.1], sets of type (iii) can be parametrized in terms of the corresponding generalised mean curvature h . Thus, denoting by

$$\beta := \beta(h) = \pi - 2 \arcsin(\sqrt{h}), \quad \alpha := \alpha(h) = \arccos\left(\frac{\cos \beta}{\lambda}\right), \quad (26)$$

it can be checked that the perimeter and the area enclosed by such a set are given by

$$P_{iii}(h) = \frac{2\lambda\alpha}{h} + \frac{4 \arcsin(\sqrt{h})}{h} + \frac{2 \sin \alpha}{h} - \frac{4\sqrt{h(1-h)}}{h},$$

$$A_{iii}(h) = \frac{\lambda\alpha - \sin \alpha \cos \beta}{h^2} + 2 \frac{\arcsin(\sqrt{h}) - \sqrt{h(1-h)}}{h^2} + \frac{4 \sin \alpha}{h} - \frac{4\sqrt{1-h}}{\sqrt{h}}.$$

We point out that, when h tends to zero, the area enclosed $A_{iii}(h)$ increases, while for h close to one, $A_{iii}(h)$ achieves its minimum value.

In a similar way, we can express the perimeter and the area enclosed by a set of type (iv) in terms of the mean curvature h . By denoting by

$$\hat{\beta} := \hat{\beta}(h) = \frac{\pi}{2} - \arcsin(h), \quad \hat{\alpha} := \hat{\alpha}(h) = \arccos\left(\frac{\cos \hat{\beta}}{\lambda}\right), \quad (27)$$

we have that necessarily $0 < h \leq 1$, and that the perimeter and area enclosed by a set of type (iv) with curvature h are equal to

$$P_{iv}(h) = \frac{4\lambda\hat{\alpha}}{h} + \frac{4 \arcsin(h)}{h},$$

$$A_{iv}(h) = \frac{4 \sin \hat{\alpha}}{h} + 2 \frac{\lambda\hat{\alpha} - \sin \hat{\alpha} \cos \hat{\beta}}{h^2} + 2 \frac{\arcsin(h) - h\sqrt{1-h^2}}{h^2}.$$

Figure 6 shows several graphs where the perimeters of these types of sets are displayed, for different values of λ .

For these and many others values of λ , we have obtained numerically the behaviour described in Conjecture 3.12, as those graphs show. Moreover, it seems that sets of type (iv) are always beaten by sets of type (iii), which are the solutions for large values of the area (see Theorem 3.16). Thus, sets of type (iv) are not expected to be solutions.

Remark 3.13 It is not difficult to justify that sets of type (ii) cannot be the solutions for large values of the area. Indeed, for any $\lambda > 1$, and for curvature h close enough to zero, we have $P_{iv}(h) < P_{ii}(A_f(h))$, which means that the set of type (iv) is better than the set of type (ii) for area $A_{iv}(h)$ (which shall be a large value of the area). In addition, the reverse inequality holds for values of h close enough to one, and then sets of type (ii) are better for such (smaller) areas. We also have these same properties when considering type (iii) sets instead of type (iv) ones.

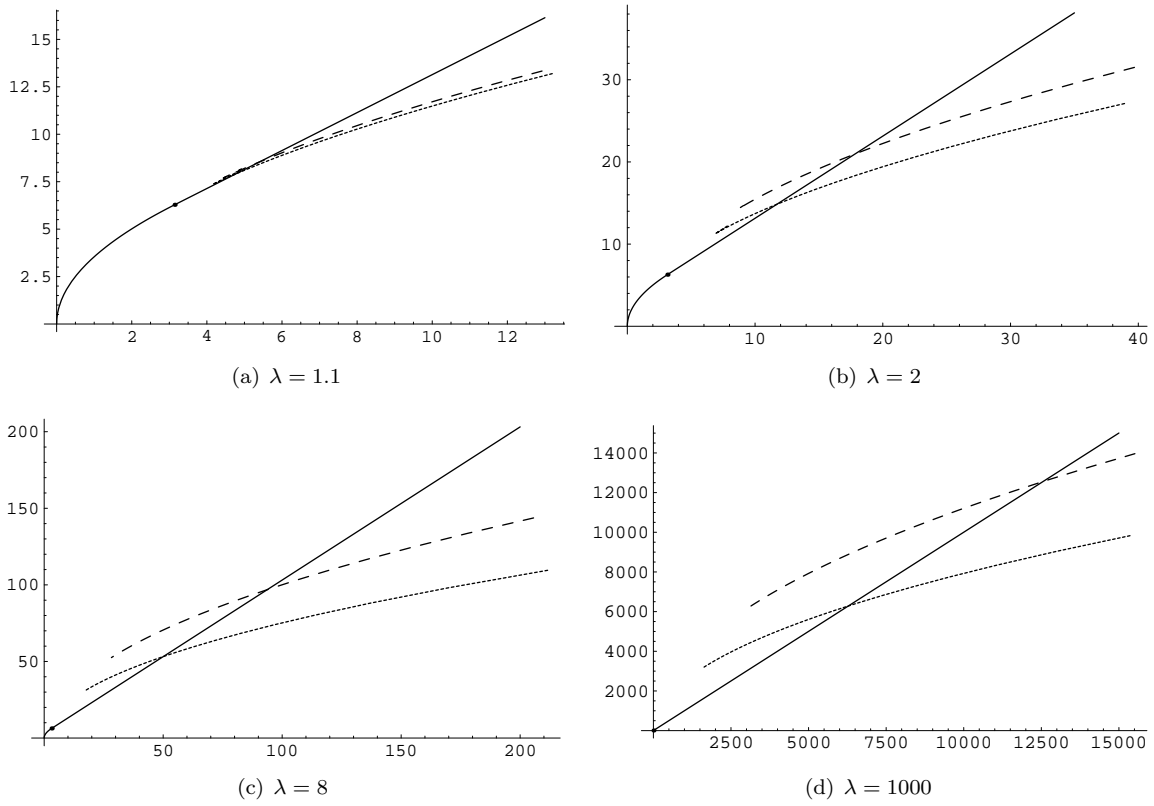


Figure 6: Comparison of perimeters in four different cases: the solid curve represents the transition between sets of type (i) and (ii), while the other dashed and dotted curves correspond to the perimeter of sets of type (iv) and (iii), respectively.

Remark 3.14 Sets of type (iii) and (iv) possess an unexpected feature. They have curvature less than one but, for curvature slightly less, perimeter and area *decrease*. This can be noticed in Figure 7, showing the graph of perimeter in terms of the enclosed area in case $\lambda = 1.1$: the solid curve (the lower one) is associated to sets (iii), the dotted (upper one) to type (iv). Curvature is taken from 1 (corresponding to the “left” endpoint of each graph) to 0.8. Notice that initially (i.e. for curvature close to one) each graph “goes left”, until a minimum (for both area and perimeter) is obtained in correspondence of the corner point of the graph.

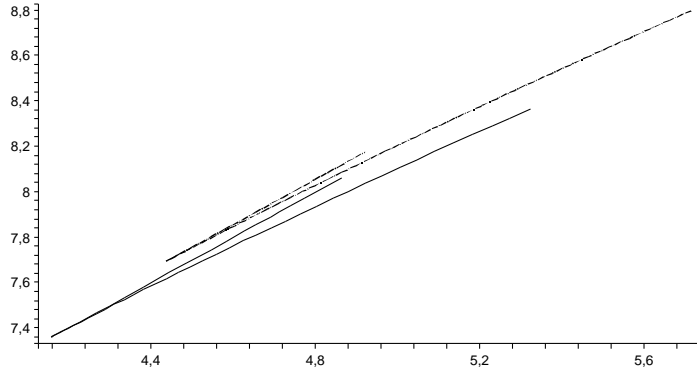


Figure 7: When curvature goes from one to zero, the perimeter and area of sets (iii)-(iv) firstly decrease and then increase.

Even if without a complete result, in Theorem 3.16 we will characterise most of the isoperimetric sets for the strip density. First we have to consider the following “line” density setting, which we will see as a sort of “blow-down” of the strip density. Consider the density g on \mathbb{R}^2 given by

$$g(x, y) = \begin{cases} \lambda & \text{if } y \neq 0 \\ 1 & \text{if } y = 0. \end{cases} \quad (28)$$

Theorem 3.15 *For the density in \mathbb{R}^2 defined by g , isoperimetric sets exist for any given volume and are bounded by an arc meeting the horizontal axis with angle $\arccos \frac{1}{\lambda}$, and with the chord on the axis as in Figure 8.*

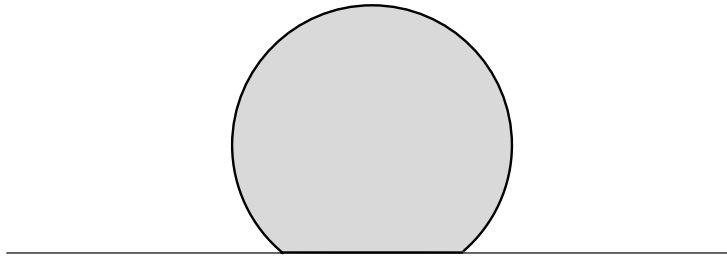


Figure 8: Isoperimetric set for the line density.

PROOF. The existence of an isoperimetric set for any prescribed volume, as well as its connectedness, follows from a compactness argument similar to the one in Proposition 3.5. As in Proposition 3.6, Schwarz symmetrisation with respect to the vertical axis ensures that an isoperimetric set symmetric with respect to such axis exists for any volume bound. We claim that an isoperimetric set with

such a symmetry must be the one described in the statement; the fact that any isoperimetric set is symmetric with respect to the vertical axis easily follows by adapting one of the arguments of Proposition 3.9 and Remarks 3.10 and 3.11.

The regularity of the isoperimetric boundary ensures that for $\gamma_+ := \partial E \cap \{y > 0\}$ one of the following holds:

- (a_+) it consists of a complete circumference;
- (b_+) it consists of a single arc with chord a segment ℓ_+ on the horizontal axis (possibly reducing to a single point);
- (c_+) it is empty.

The same possibilities, which we will call (a_-), (b_-) and (c_-), are given also for $\gamma_- := \partial E \cap \{y < 0\}$, with ℓ_- defined analogously. Taking into account the Snell law, our thesis is equivalent to proving that the isoperimetric set falls into one of the cases (b_+c_-) or (c_+b_-).

We can discard the cases (a_+a_-), (a_+b_-) and (b_+a_-): in fact, one could translate vertically the two components towards the origin until an “irregular contact” is obtained.

The case (b_+b_-) can be discarded too. First of all, the two segments ℓ_+ and ℓ_- must coincide; otherwise (by vertical symmetry) one would be contained in the other, say $\ell_- \subsetneq \ell_+$. The arcs γ_+ and γ_- meet the horizontal axis satisfying Snell law, and so one of them forms (with the same axis) an angle $\alpha := \arccos \frac{1}{\lambda}$, and the other one will form an angle $\pi - \alpha$. This easily implies that the chords ℓ_+ and ℓ_- have the same length, and so that our set is a round ball. In particular, perimeter and area are the same as the cases (a_+c_-) and (a_-c_+), which we are going to discard in a while.

The case (c_+c_-) is of no concern, as it corresponds to null volume. For sets E falling into cases (a_+c_-) or (a_-c_+), i.e. when E is a ball, the ratio $P_g(E)^2/A_g(E)$ is equal to $4\pi\lambda$. On the other hand, when E falls into (b_+c_-) (the case (c_+b_-) is analogous) it consists of a circle minus the area enclosed by the chord ℓ_+ , the angle at the center determined by ℓ_+ being equal to 2α by Snell law. Easy computations yield that

$$\begin{aligned} \frac{P_g(E)^2}{A_g(E)} &= \frac{4((\pi - \alpha)\lambda + \sin \alpha)^2}{\lambda(\pi - \alpha + \sin \alpha \cos \alpha)} = \frac{4\lambda^2((\pi - \alpha) + \sin \alpha \cos \alpha)^2}{\lambda(\pi - \alpha + \sin \alpha \cos \alpha)} \\ &< 4\lambda(\pi - \alpha + \alpha) = 4\pi\lambda, \end{aligned}$$

where we have used that $0 < \alpha = \arccos \frac{1}{\lambda} < \pi/2$. This concludes the proof. \square

We also need to introduce the function $\text{arc}(x)$ defined as the perimeter of a circular arc with unit chord and area x . Let us briefly recall some of its properties (see [24, Section 15.5]):

- arc is convex in $[0, \pi/8]$ and concave in $[\pi/8, +\infty[$;
- $\text{arc}(\pi/8) = \pi/2$ and $\text{arc}'(\pi/8) = 2$.

We stress that the boundary case $x = \pi/8$ corresponds to a semicircle of radius $1/2$.

We now collect in the following theorem the partial results we are able to prove for this strip density.

Theorem 3.16 *The isoperimetric sets for area $v > 0$ for the strip density, defined by 1 in the strip $\{|y| \leq 1\}$ and $\lambda > 1$ outside, are*

- (a) balls of type (i) if $v \leq \pi$;
- (b) sets of type (ii) if $\pi < v \leq v_0$;
- (c) sets of type (iii) or (iv) if $v_0 \leq v \leq v_1$;
- (d) sets of type (iii) if $v \geq v_1$,

for suitable $v_1 \geq v_0 > \pi$. In particular, for area v_0 there are at least two different isoperimetric sets. Moreover, type (iv) never occurs for $\lambda \geq 4/\pi$, i.e. in this case one can take $v_0 = v_1$.

PROOF. Set E an isoperimetric region for area v . To verify part (a) of the statement, we just need to show that any set of type (ii), (iii) or (iv) has area greater than π . This is clear for sets of type (ii).

For sets of type (iii) we observe that, if the three arcs have radius $R > 2$, then the arc outside the strip is greater than the semicircle with same radius, and so the enclosed area is greater than the area of that semicircle (times the density λ), whence greater than $\lambda\pi R^2/2 > \pi$. Otherwise we must have $1 < R \leq 2$ and it is easy to see that the internal arcs meet $\{y = 1\}$ in such a way that the angle between the segment $\{y = 1\} \cap E$ and each arc inside the strip is greater than $\pi/2$. Using the Snell law it is not difficult to observe that the sum of the central angles associated with the three arcs is greater than 2π ; moreover, the corresponding sectors of circle do not overlap and are contained in E . This means that the area of E is greater than that of a circle of radius R , hence greater than π .

For sets of type (iv) we can use a similar argument and obtain that the four central angles have sum greater than 2π . Let us check that the four associated sectors do not overlap; in this way the area of the candidate is greater than that of the circle with same radius $R > 1$ and are done. It is sufficient that the sectors corresponding to the upper and lower arcs do not overlap, i.e., that the center of the upper arc has positive y -coordinate (and so the center of the lower arc has negative y -coordinate). Since the parameter $\hat{\alpha}$ in (27) denotes half of the central angle corresponding to the upper arc, the y -coordinate of its center equals $1 - R \cos \hat{\alpha} = 1 - \frac{1}{\lambda} > 0$.

We claim that the graphs representing the perimeter in terms of the area enclosed, corresponding to sets of type (ii) and (iii), intersect only once (see the graphs of Figure 6). Indeed, the curvature of the sets of type (iii) is always less than one (see (26)), which is the curvature of any set of type (ii). Since curvature coincides with the *slope* of those graphs, this implies that those graphs intersect at most once. Moreover, type (iii) does not exist for area π and, by Remark 3.13, beats type (ii) for large area. Therefore, there exists some $a_0 > \pi$ such that sets of type (ii) are better than sets of type (iii) for areas less than a_0 , while sets of type (iii) are better for areas greater than a_0 . The same reasoning can be done for sets of type (iv): sets of type (ii) are better than type (iv) ones for areas less than a_1 , the contrary for greater areas. Part (b) thus follows by noticing that any type-(i) set has area at most π ; the value v_0 can be characterised by $v_0 := \min\{a_0, a_1\} > \pi$.

Statements (c) and (d) require more work. By contradiction, suppose there is a sequence of areas $v_j \rightarrow \infty$ such that the related isoperimetric sets E_j are of type (iv). Let R_j be the radius of the curvilinear components of ∂E_j ; notice that each of the components in $\{y > 1\}$ and in $\{y < -1\}$ meets the strip with an angle lying in $[\arccos \frac{1}{\lambda}, \pi - \arccos \frac{1}{\lambda}]$. This forces each of these two arcs to bound a region of area at least cR_j^2 ($c > 0$ depending only on λ), while the area of E_j contained in the strip is of order R_j . In particular, for large j a “big” portion (at least Cv_j , $C = C(\lambda) > 0$) of the area of E_j lies in the half-plane above the strip, and another “big” portion lies below the strip.

Let us perform the following “blow-down” operation: for any fixed j we make a dilation of a factor $v_j^{-1/2}$ so that E_j is mapped into a set of area 1. More precisely, we consider the “thin strip” density f_j on \mathbb{R}^2 given by

$$f_j(x, y) = \begin{cases} \lambda & \text{if } |y| > \frac{1}{\sqrt{v_j}} \\ 1 & \text{otherwise.} \end{cases}$$

Clearly $f_j \rightarrow g$ pointwise, where g is the line density defined in (28), and the sets $F_j := E_j/\sqrt{v_j}$ are isoperimetric and of unit weighted area. Being connected they satisfy the diameter estimate (1). Up to horizontal translations, we can therefore suppose that they are contained in a big ball B , and a compactness argument ensures that a subsequence converges in L^1 to a certain set F . This means that

$$A_{f_j}(F_j) \rightarrow A_g(F) = 1,$$

where g is the function defined by (28); this is because g and f_j differ only on the thin strip, whose intersection with the ball B has area going to 0. Semicontinuity of the perimeter and the inequality $f_j \geq g$ imply

$$P_g(F) \leq \liminf_{j \rightarrow \infty} P_g(F_j) \leq \liminf_{j \rightarrow \infty} P_{f_j}(F_j).$$

It follows that F has to be isoperimetric for the density g ; in fact, were another unit area set F' isoperimetrically better than F we would obtain

$$\frac{P_g(F')^2}{A_g(F')} + \epsilon < \frac{P_g(F)^2}{A_g(F)} \leq \liminf_{j \rightarrow \infty} \frac{P_{f_j}(F_j)^2}{A_{f_j}(F_j)}$$

for some positive ϵ , and so F_j could not be isoperimetric (for f_j) for large j .

We will reach a contradiction if we show that F cannot be one of the isoperimetric sets described in Theorem 3.15. In fact, for large j the part of F_j lying above the “thin strip” has area at least $C > 0$, and the same holds for the part below it. This must happen also for F , and so it cannot coincide with one of the sets in Theorem 3.15.

It remains to show that for $\lambda \geq 4/\pi$, case (iv) can never occur. Consider in fact any such set; let L be the length of the chords of the upper and bottom caps and A be the (Euclidean) area enclosed by each of them. Replace these two caps with a segment of length L on $\{y = -1\}$ and a cap in $\{y > 1\}$, enclosing Euclidean area $2A$ and lying upon the same chord as the removed upper cap. To prove that we have decreased perimeter we have to show that

$$\lambda L \arccos(2A/L^2) + L < 2\lambda L \arccos(A/L^2).$$

Setting $x := A/L^2$, this is equivalent to show that

$$h(x) := 2\arccos(x) - \arccos(2x) > 1/\lambda.$$

Since $h'(x) = 2\arccos'(x) - 2\arccos'(2x)$, the convexity/concavity properties of \arccos ensure that $h'(x) < 0$ for $x \leq \pi/16$ and $h'(x) > 0$ for $x \geq \pi/8$. Therefore the minimum of h is attained at some $x_{\min} \in]\pi/16, \pi/8[$. Since \arccos is convex in $[0, \pi/8]$ we have

$$\arccos(x_{\min}) > \arccos(\pi/8) + \arccos'(\pi/8)(x_{\min} - \pi/8) = \pi/4 + 2x_{\min}$$

while concavity in $[\pi/8, +\infty[$ yields

$$\arccos(2x_{\min}) < \arccos(\pi/8) + \arccos'(\pi/8)(2x_{\min} - \pi/8) = \pi/4 + 4x_{\min}.$$

The last two equations imply that $h(x_{\min}) > \pi/4 \geq 1/\lambda$ as desired. \square

Remark 3.17 The bound $4/\pi$ in the last assertion of Theorem 3.16 is not optimal. In fact, a closer examination of the inequalities we have used leads to $h(x_{\min}) = k > \pi/4$, and actually the statement holds for $\lambda > 1/k$. Unfortunately, since $h(0) = 1$ one has $k < 1$: in other words, our argument of “substituting upper and bottom caps with a unique one” fails for small values of λ .

3.3 The ball

In this section we denote by f the “ball” density on \mathbb{R}^2 taking values $\lambda \in \mathbb{R} \setminus \{1\}$ on the open ball $B = B(0, 1)$ and 1 on $\mathbb{R}^2 \setminus \overline{B}$. The value of f on ∂B is $\min\{1, \lambda\}$ in order to guarantee its lower-semicontinuity. We begin with an existence result for the isoperimetric problem.

Theorem 3.18 *For the ball density, isoperimetric sets exist for any given area.*

PROOF. Let $v > 0$ be the area bound; it will be sufficient to prove that there exists $R > 0$ and a minimising sequence $\{E_j\}$ such that

$$|E_j|_f = v, \quad P_f(E_j) \rightarrow \inf\{P_f(F) : |F|_f = v\} \quad \text{and} \quad E_j \subset B(0, R).$$

In this way, we will reduce to an isoperimetric problem in a space with finite total mass, where existence of isoperimetric sets is a well-known result (see [24]).

To do this, consider any minimising sequence $\{F_j\}$ with $|F_j|_f = v$; it is not restrictive to assume F_j to be smooth open sets, and so one can write $F_j = \cup_i F_{j,i}$, where $F_{j,i}$ denote the connected

components of F_j . If i is such that $F_{j,i} \cap B \neq \emptyset$, then estimate (1) easily provides $R_1 > 0$ (depending only on v) such that $F_{j,i} \subset B(0, R_1)$. For the other components, we can substitute $\cup_i \{F_{j,i} : F_{j,i} \cap B = \emptyset\}$ with a unique ball $B(x, R_j)$ (for certain $x \in \mathbb{R}^2$) enclosing the same volume, thus defining the set $E_j := B(x, R_j) \cup \cup \{F_{j,i} : F_{j,i} \cap B \neq \emptyset\}$. Notice that R_j is bounded uniformly in j by some R_2 depending only on v , since $|E_j|_f = v$, and that $P_f(E_j) \leq P_f(F_j)$. Anyway, we have a lot of freedom in the choice of the center x ; i.e., we can move $B(x, R_j)$ towards the origin, without touching the other components of E_j , until we obtain (say) $E_j \subset B(0, R_1 + 2R_2 + 1)$. \square

The nature of the isoperimetric problem, as we will see in a moment, is completely different in the two cases $\lambda > 1$ and $\lambda < 1$. Therefore, we treat them separately.

3.3.1 The ball with density $\lambda > 1$.

We start with a description of all possible candidates for isoperimetric set. The first one is a round ball, and, as we shall see in Theorem 3.20, balls are isoperimetric for volumes $v > \lambda\pi$. Other more complicated candidates arise when we look for isoperimetric sets with area v smaller than $\lambda\pi$.

Proposition 3.19 *If the prescribed area v is smaller than $\lambda\pi$, then an isoperimetric set is one of the following (see Figure 13):*

- (a) a round ball contained in $\mathbb{R}^2 \setminus B$;
- (b) the region enclosed by an arc of ∂B and another internal circular arc (inside B), the angle between them being equal to $\arccos \frac{1}{\lambda}$ (i.e., the limit case in the Snell law).

PROOF. In what follows, we will denote by E an isoperimetric set of area v and by $\gamma = \partial E$ its boundary.

Step 1: E is either a ball outside B (i.e. a set of type (a)) or the closure of each of its components is simply connected and intersects both B and its complement.

It is not difficult to see that the isoperimetric boundary γ can be decomposed into countably many rectifiable Jordan curves γ_j , and that E coincides with the union of the connected and simply connected open regions E_j enclosed by each γ_j . Otherwise, we could write $E_j = F(\gamma_j) \setminus G_j$, where $F(\gamma_j)$ is the region enclosed by a certain Jordan curve γ_j and G_j is a proper subset of $F(\gamma_j)$. Since our density is rotationally invariant, we could rotate G_j about the origin until it touches γ_j : perimeter and area are unaffected, but regularity fails.

Since balls outside B are better than inside, there is no E_j with $\overline{E_j} \subset B$, or we could substitute all such regions with a unique ball outside B , with same area and less perimeter. Similarly, there is at most one single component outside B , which must be a ball. If this is the case, there is no other component E_j such that $\overline{E_j}$ intersects both B and its exterior, otherwise we could move our external ball until it touches E_j , thus violating regularity. Therefore, the isoperimetric set would be a ball like in part (a) of the statement.

In the rest of the proof we will focus our attention on the remaining case that any $\overline{E_j}$ intersects both B and its exterior.

Step 2: Only a finite number of internal arcs is allowed: as a consequence, E has regular trace inside B .

Recall that $\gamma \cap B$ and $\gamma \setminus \overline{B}$ consists of circular arcs c_j with endpoints on ∂B (we have already excluded whole circles), with the same constant curvature κ . Moreover, E must contain all the regions F_j enclosed by a c_j and the corresponding arc on ∂B , determined by the endpoints of c_j (notice that, for internal arcs, there are two possible regions of this type, a bigger and a smaller one). Otherwise, we could use a cutting technique.

Suppose by contradiction that there are internal arcs c_j as in Figure 9 of arbitrarily small length and set α_j to be the associated central angle. Due to curvature κ , the area of the region F_j enclosed by c_j is of order α_j^3 . By cutting F_j from our set we would gain perimeter $\sim (\lambda - 1)\alpha_j$, and we could restore the lost area $\sim \alpha_j^3$ with some ball of radius (and perimeter) $\sim \alpha_j^{3/2}$. This is a contradiction, since for sufficiently small α_j we would overall gain perimeter.

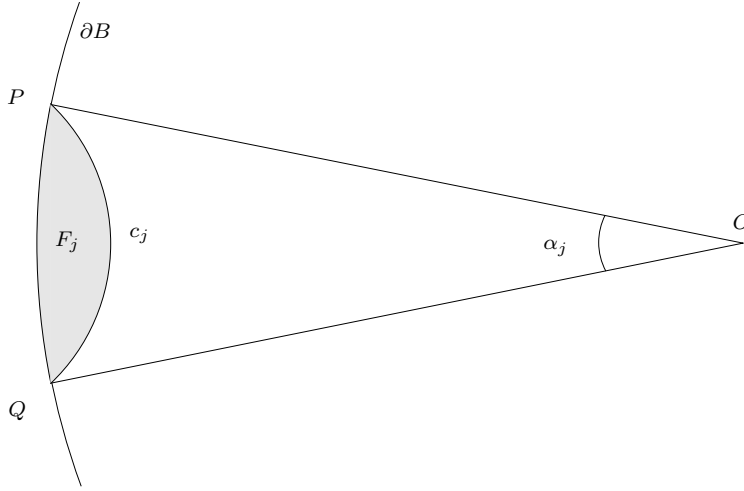


Figure 9: Internal arcs enclose a fixed area amount.

As a straightforward consequence, only a finite number of internal c_j 's is allowed. This implies also that the number of connected components E_j is finite: in fact, $\overline{E_j} \cap B \neq \emptyset$, whence the boundary γ_j must meet the open ball B , and so contains an internal arc c_j .

Step 3: External arcs cannot meet ∂B with angle strictly greater than $\pi/2$.

This is a technical point: it will allow us to use arguments like “put external arcs in succession, so that two consecutive ones have a common endpoint”, which would be precluded if one angle were greater than $\pi/2$. In fact, by doing such an operation it could happen that two consecutive regions overlap; it is evident that this pathology cannot occur if the meeting angles are less than $\pi/2$.

Suppose now that there exists such an external arc c , with endpoints P and Q ; let us prove that the distance between c and any other external arc is bounded away from 0. Otherwise, a sequence of external arcs c_k would accumulate at P (or Q), so some arc near P would lie “below” c (i.e., there exists a half-line from the origin meeting both c and c_k); say that the accumulating sequence of arcs stays “on the left” of P . Since there is only a finite number of internal arcs we just have the following two possibilities:

- there is a small arc $a \subset \partial B$, with P as the right endpoint (i.e. a is staying “on the left” of P) which is contained in one of the arcs on ∂B determined by some internal arc c_j . Informally, we could say that the sequence c_k “rests” on the arc a . We could then use a small segment s to join an external arc c_k “below” P to some point on c close to P , and add the region enclosed by s , c , a and the c_k 's. In this way we have gained both perimeter and area, and we could use cutting arguments to restore area and gain perimeter again, which is contradictory.
- there is a small arc a on ∂B , with P as the right endpoint, which is not contained in any of the arcs on ∂B determined by the internal arcs c_j . This implies that each external arc c_k , together with the arc it determines on ∂B , bounds a connected component contained in the region with density 1, which could be cut away and replaced by balls to restore area and gain perimeter.

Also, it is not possible for P and Q to lie in the *interior* of the arc a of ∂B determined by some internal arc. Otherwise we could use a segment s to join some point on c , close to P , to some point on a “below” P , and add the region enclosed by c , a and s , thus gaining both perimeter and area.

The previous arguments imply that the connected component E_j , whose boundary contains c , is “free” to move left or right: i.e., unless E_j is the only component, we can rotate it about the origin until one of the following happens

- c touches another external arc at a point outside \overline{B} ;

- some endpoint of another external arc becomes too close to P or Q ;
- some internal arc of γ_j touches another internal arc at a point in B ;
- some internal arc not of γ_j becomes too close to P or Q .

Each of these possibilities leads to a contradiction (since in any case we could use cutting arguments) unless there exists only one connected component E .

If this is the case, consider an internal arc c_j : it is not difficult to realise that the arc on ∂B determined by c_j 's endpoints must be contained in the arc PQ (again, the one “internal” to the region enclosed by c). Otherwise, it would be contained in the opposite arc PQ (we have already seen that the endpoints of c_j cannot lie one on the arc PQ and one on the other arc PQ , or we could cut at P or Q), violating connectedness. Since any internal arc “rests” on PQ and there is only one connected component, there cannot exist another external arc apart from c .

Therefore, the boundary of E is made by c plus a finite number of internal arcs c_j , any of them “resting” on the arc PQ . Were there more than one, we could rotate them until they touch, contradicting minimality also if the touching point is on ∂B (the Snell law (13) would not hold). Therefore just an internal arc c' is allowed: by rotating it, we can suppose it to have an endpoint in P , where the Snell law must hold. By symmetry, the other endpoint meets ∂B with the same angle, and so must coincide with Q .

Recall that c and c' have the same curvature: so, they can be either symmetric with respect to the segment PQ or form a complete circle. In both cases, the Snell law would be violated unless the meeting angle is exactly $\pi/2$ yielding a contradiction.

Step 4: Only a finite number of external arcs is allowed: in particular E has regular traces on ∂B .

By contradiction: suppose that outer arcs accumulate at a point $P \in \partial B$; we can then find an arc $\ell \subset \partial B$ such that

- P is an endpoint of ℓ ;
- there are infinitely many external arcs C_j whose endpoints lie on ℓ ;
- the trace of $B \cap E$ on ∂B is constantly 0 or 1 on $\overset{\circ}{\ell}$ (in other words: the finitely many arcs ℓ_j on ∂B , determined by internal arcs c_j , are such that $\overset{\circ}{\ell} \subset \ell_j$ or $\overset{\circ}{\ell} \cap \ell_j = \emptyset$).

We can therefore re-order the C_j 's (and the corresponding enclosed regions F_j) in sequence, in such a way that they still “rest” on ℓ and any two consecutive C_j have a common endpoint on ∂B . In this way, area is clearly not affected, and so does the perimeter, since the third assumption on ℓ ensures that we are not creating (nor destroying) perimeter on ∂B . Regularity clearly fails with this construction, since the number of internal arcs is finite.

Step 5: The isoperimetric set is connected, enclosed by a piecewise \mathcal{C}^1 Jordan curve, and the Snell law (13) holds.

As we have seen, the boundary $\gamma \setminus \partial B$ is made by a finite number of arcs; therefore, the whole γ is made by a finite number of arcs which can be internal, external or subarcs of ∂B . In what follows, we will call “external” also an arc of γ constituted by a subarc of ∂B . The regularity of traces of E on ∂B implies that the Snell law (13) must hold at any endpoint on ∂B of any arc of γ . More precisely, at any of these endpoints a unique external and a unique internal arc meet, with the Snell law satisfied. This holds true also when the external arc is the limit case, i.e. a subarc of ∂B .

Also, there is only a finite number of connected components (which, as we have already seen, are simply connected too). Suppose there were more than one: we could rotate one of them about the origin until meeting another, contradicting the Snell law.

Step 6: An external arc cannot meet ∂B transversally.

Suppose by contradiction that this happens at a point $P \in \partial B$; then (part of) γ consists of two circular arcs c_1 (outside B) and c_2 (in B), of the same radius, which intersect at P respecting the Snell law (13): see Figure 10. Since $\lambda > 1$, the angle α_1 at P between c_1 and ∂B is strictly smaller than the angle α_2 at P between c_2 and ∂B , provided $\alpha_1 \neq \pi/2$. In some sense, the discontinuity of

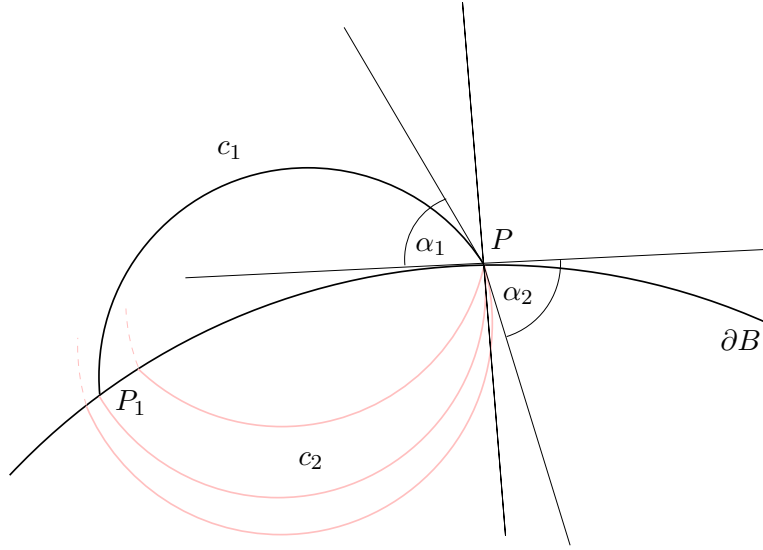


Figure 10: Possible prolongations of c_2 .

the density causes a rotation, of center P and of an angle $\alpha_2 - \alpha_1 > 0$, of the circle c_1 . We recall that the curvatures of c_1 and c_2 (with respect to the inner normal), and not just their radii, coincide.

Let then P_1, P_2 be the other points where ∂B meets, respectively, c_1 and c_2 , and suppose $P_1 \neq P_2$: by prolonging γ after P_2 (thus obtaining an arc c_3 , see Figure 11) we will fall into a contradiction. In fact, the Snell law holds again, and so the angle between c_3 and ∂B is exactly α_1 : this means that c_3 can be obtained from c_1 by means of the rotation centered at the origin which moves P_1 to P_2 . The arcs c_1 and c_3 do not intersect (this happens, e.g., when P_2 lies in the arc P_1P), or this would lead to a contradiction. If P_2 does not lie on the arc P_1P and c_1, c_3 do not intersect, then c_3 meets ∂B at another point P_3 on P_2P_1 . Prolong then c_3 from P_3 to obtain c_4 : this arc will surely meet c_2 , since it can be obtained by rotation and $P_3 \in P_2P_1$. This is a contradiction.

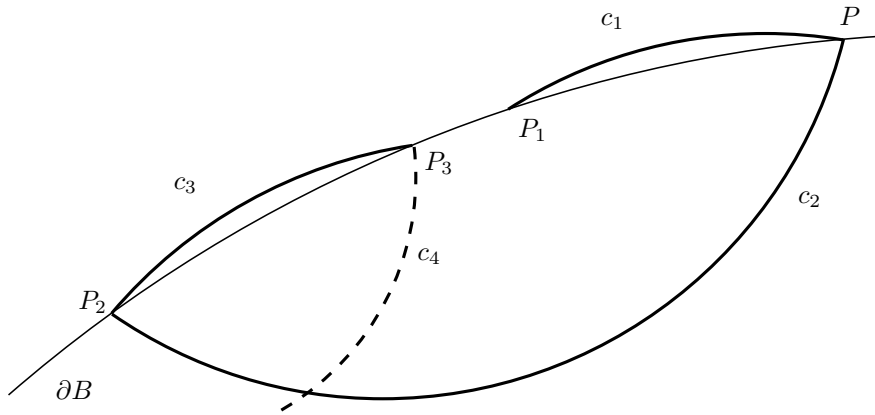


Figure 11: Self intersections cannot happen.

If $P_1 = P_2$, then c_1, c_2 (circles with same curvature) are either symmetric with respect to the segment PP_1 or form a complete circle, and this contradicts the Snell law unless $\alpha_1 = \alpha_2 = \pi/2$, i.e. c_1 and c_2 form a complete circumference c (Figure 12). Let Q be the center of c , r its radius, and set $\beta := \widehat{P_1QP}$; noticing that the radii QP and QP_1 are tangent to ∂B , we obtain that the density

area $v_f(c)$ of the circle is less than

$$r^2[\pi + (\lambda - 1) \cdot (\text{Area of sector } P_1QP)] = r^2[\pi + (\lambda - 1)\beta/2].$$

Since the density perimeter of the circle c is $r(2\pi + (\lambda - 1)\beta)$, we obtain that

$$\frac{P_f(c)^2}{v_f(c)} > \frac{r^2(2\pi + (\lambda - 1)\beta)^2}{r^2[\pi + (\lambda - 1)\beta/2]} = 4[\pi + (\lambda - 1)\beta/2] > 4\pi,$$

which is the isoperimetric ratio of any ball outside B . It follows that c cannot be isoperimetric.

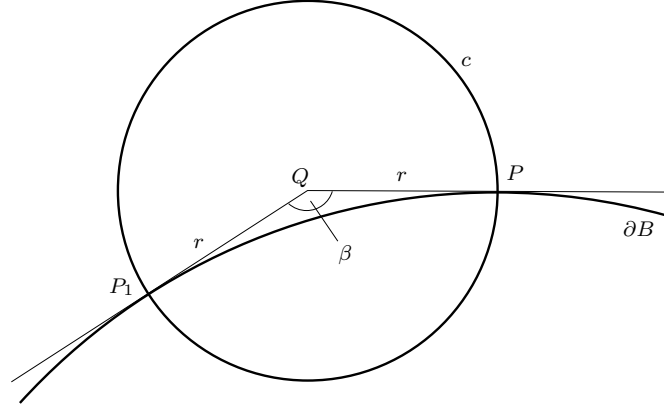


Figure 12: A particular ball.

Step 7: Reduction to case (b).

In Step 6 we excluded external arcs which are not subarcs of ∂B and have two endpoints on ∂B . In fact they would be tangential to ∂B , and then would either enclose the whole B (contradicting assumption $v < \lambda\pi$) or a ball external to B .

It follows that the isoperimetric boundary γ is composed by a finite number of internal c_j 's and some subarcs of ∂B . Were the internal c_j 's more than one, we could rotate one of them until it touches another one, thus violating minimality at the touching point. Therefore, the isoperimetric set is the one described in part (b) of the statement. \square

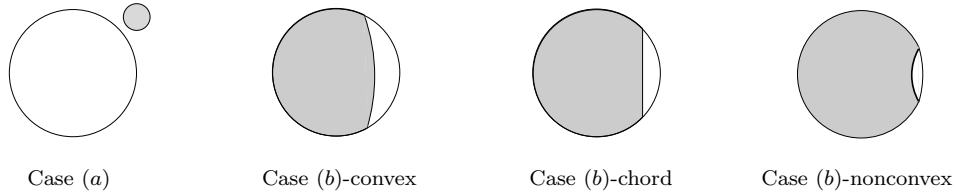


Figure 13: Isoperimetric sets, $v < \lambda\pi$.

We can now conclude this section with the main result.

Theorem 3.20 *For the plane with density $\lambda > 1$ on the unit ball and 1 elsewhere, there exists a $0 < v_0 < \lambda\pi$ such that*

1. *if $v \leq v_0$, the isoperimetric set with area v is a ball contained in $\mathbb{R}^2 \setminus B$ (type 3.19(a));*
2. *if $v_0 \leq v \leq \lambda\pi$ the isoperimetric set is of type 3.19(b);*
3. *if $v \geq \lambda\pi$, the isoperimetric set is a round ball containing the ball B .*

All three subcases of type 3.19(b) of Figure 13, convex, chord and nonconvex, actually occur for some values of λ .

PROOF. *Step 1: If $v \geq \lambda\pi$, the isoperimetric set is a round ball containing B .*

Let E be any set of weighted area v : since the region with density λ has Euclidean area π , the Euclidean area of E is at least $v - (\lambda - 1)\pi$ and by classical isoperimetry its Euclidean perimeter is at least that of the ball with the same area, i.e. the one with radius $(\frac{v}{\pi} + 1 - \lambda)^{1/2}$. Since $f \geq 1$, this also gives a lower bound for the f -perimeter of E ; however, any ball as in the statement is such that these inequalities are in fact equalities, and so is isoperimetric. Conversely, for any other set, at least one of the inequalities is strict, and so it cannot be isoperimetric.

Step 2: If v is small, the isoperimetric set is a ball of type (a).

Suppose by contradiction this is not true: then the isoperimetric set E is a (b)-convex type (see Remark 3.21), determined by an arc PQ on ∂B and another one of center O' , meeting the arc PQ with angle $\beta_0 = \arccos(1/\lambda)$: as in Figure 14.

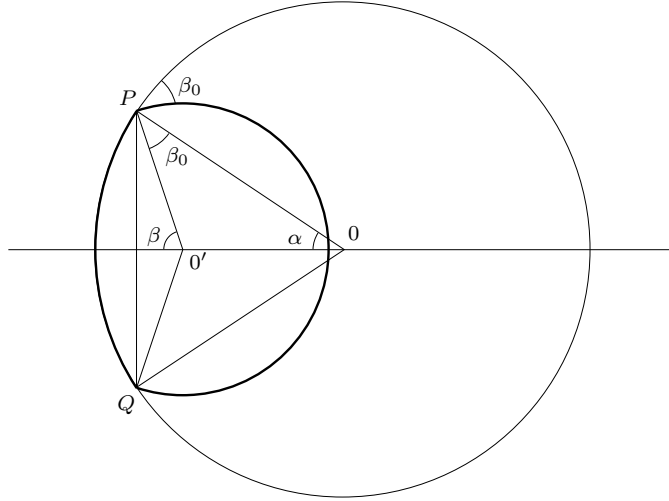


Figure 14: Area $v \downarrow 0$.

Let α be the angle $\widehat{POO'} = \widehat{POQ}/2$ and $\beta = \widehat{PO'Q}/2$; we have $\beta = \alpha + \beta_0$ (since $\widehat{O'PO} = \beta_0$) and it is easy to compute the density perimeter of E

$$P_f(E) = P_f(E_\alpha) = 2 \left(\alpha + \lambda \frac{\sin \alpha}{\sin \beta} (\pi - \beta) \right)$$

and the density area of E

$$|E|_f = |E_\alpha|_f = \lambda \left[\alpha - \sin \alpha \cos \alpha + \left(\frac{\sin \alpha}{\sin \beta} \right)^2 (\pi - \beta + \sin \beta \cos \beta) \right].$$

We will get a contradiction if we show that $\lim_{\alpha \rightarrow 0} P_f(E_\alpha)^2 / |E_\alpha|_f > 4\pi$. To do this, we express $\sin \beta, \cos \beta$ and λ as functions of α and β_0 (remember that $\beta = \alpha + \beta_0$ and $\lambda = 1/\cos(\beta_0)$) and, through a straightforward Taylor expansion, we achieve

$$P_f(E_\alpha) = 2\alpha \left(1 + \frac{\pi - \beta_0}{\sin \beta_0 \cos \beta_0} \right) + O(\alpha^2) \quad \text{and} \quad |E_\alpha|_f = \frac{\alpha^2}{\sin \beta_0} \left(1 + \frac{\pi - \beta_0}{\sin \beta_0 \cos \beta_0} \right) + O(\alpha^3).$$

Then

$$\lim_{\alpha \rightarrow 0} \frac{P_f(E_\alpha)^2}{|E_\alpha|_f} = 4 \sin \beta_0 \left(1 + \frac{\pi - \beta_0}{\sin \beta_0 \cos \beta_0} \right) = 4\sqrt{1-t^2} \left(1 + \frac{\pi - \arccos t}{t\sqrt{1-t^2}} \right),$$

where we put $t := 1/\lambda \in (0, 1)$. We have to prove that

$$\psi(t) := \sqrt{1-t^2} + \frac{\pi - \arccos t}{t} > \pi \quad \text{for any } t \in (0, 1)$$

which would allow to conclude. Since $\psi(1) = \pi$, it is sufficient to show that $\psi' < 0$ in $(0, 1)$. Indeed it is

$$\begin{aligned} \psi'(t) &= -\frac{t}{\sqrt{1-t^2}} + \frac{1}{t\sqrt{1-t^2}} + \frac{\arccos t - \pi}{t^2} \\ &\leq -\frac{t}{\sqrt{1-t^2}} + \frac{1}{t\sqrt{1-t^2}} - \frac{\frac{\pi}{2}}{t^2} \\ &= \frac{-t^3 + t - \frac{\pi}{2}\sqrt{1-t^2}}{t^2\sqrt{1-t^2}} \\ &= \frac{\sqrt{1-t^2}(t\sqrt{1-t^2} - \frac{\pi}{2})}{t^2\sqrt{1-t^2}} \\ &< \frac{(1 - \frac{\pi}{2})}{t^2} < 0. \end{aligned}$$

Step 3: For v close to $\lambda\pi$ the isoperimetric set is of type (b).

To prove this, it is sufficient to exhibit a set F of area v with $P_f(F)^2/v < 4\pi$, which is the isoperimetric ratio of any ball of type (a). Let $\epsilon := \lambda\pi - v > 0$, and remove from B a little curvilinear polygon of weighted area ϵ by a chord PQ as in Figure 15. Clearly, the remaining set F_ϵ is such that $P_f(F_\epsilon) \rightarrow 2\pi$ and $|F_\epsilon|_f \rightarrow \lambda\pi$ as $\epsilon \rightarrow 0$, and so the isoperimetric ratio converges to $4\pi/\lambda < 4\pi$.

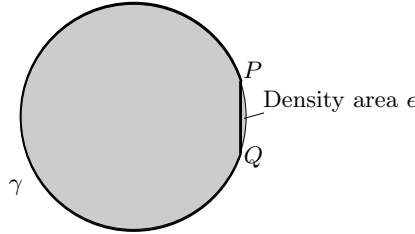


Figure 15: Area $\lambda\pi - \epsilon$.

Step 4: There exists $0 < v_0 < \lambda\pi$ such that for $v < v_0$ the isoperimetric set is of type (a), and for $v_0 < v < \lambda\pi$ is of type (b).

Figure 16 plots the perimeter as a function of the volume of type (a) configurations (dashed line) and type (b) configurations (solid line); the dotted line is the perimeter of balls containing the interior of the unit ball. The slope of these graph is given by the curvature of the boundary of the isoperimetric set. We have to show that there exists a unique point $v_0 > 0$ such that the graph of the type (a) touches the graph of type (b). We only consider convex type (b) sets, because otherwise the curvature, and hence the slope of the (b)-graph, is negative. We denote by $B_b(v)$ the type (b) set with given volume v ; it is given by $B_b(v) = B \cap B_{r_b(v)}(x(v))$ for some $x(v) \in \mathbb{R}^2$ and with

$$\frac{1}{r_b(v)} = \frac{d}{dv} P_f(B_b(v)).$$

The Euclidean volume of $B_b(v)$ is a given percentage $\varrho(v)$ of the Euclidean volume of $B_{r_b(v)}(x(v))$, that is

$$|B_b|_f = \lambda\varrho(v)\pi r_b(v)^2.$$

We notice that $v \mapsto \varrho(v)$ is a decreasing function; to see this one can perform a linear transformation in such a way that $B_{r_b(v)}(x(v))$ becomes the unit ball centered in the origin. With this modification,

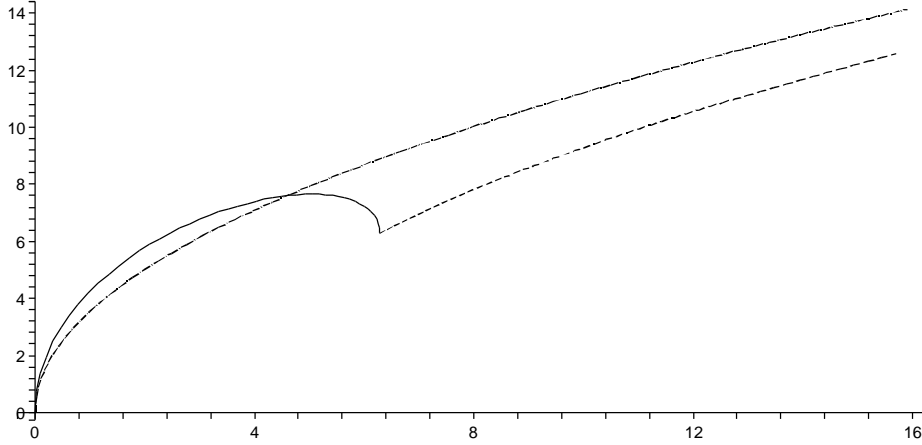


Figure 16: Comparison between type (a) and type (b) configurations with $\lambda = 2$.

the ball B is sent to the ball B' with $\partial B'$ meeting $\partial B_1(0)$ at a fixed angle. Enlarging v , we obtain a smaller ball B' , so that ϱ decreases.

We also denote by $B_a(v) = B_{r_a(v)}(y(v))$ a ball of type (a), with $r_a(v) = (v/\pi)^{1/2}$. If v_0 is the first value of the volume for which $P_f(B_b(v_0)) = P_f(B_a(v_0))$, we have that $\pi r_a(v_0)^2 = \lambda \varrho(v_0) \pi r_b(v_0)^2$ and, using the slopes of the graphs,

$$\frac{1}{r_b(v_0)} = \frac{d}{dv} P_f(B_b(v))|_{v=v_0} \leq \frac{d}{dv} P_f(B_a(v))|_{v=v_0} = \frac{1}{r_a(v_0)};$$

this implies that $\varrho(v_0) \leq \frac{1}{\lambda}$. Then it follows that $\varrho(v) < \frac{1}{\lambda}$ for $v > v_0$, and so $\pi r_a(v)^2 = \lambda \varrho(v) \pi r_b(v)^2 < \pi r_b(v)^2$, whence

$$\frac{1}{r_b(v)} < \frac{1}{r_a(v)}$$

and then for $v > v_0$ the function $P_f(B_b(v))$ is strictly smaller than $P_f(B_a(v))$, due to the above inequality of slopes.

By numerical computation, all of the cases (b)-convex, (b)-chord, and (b)-nonconvex occur for λ close to 1, while for great λ only (a) and (b)-nonconvex are isoperimetric. \square

Remark 3.21 Type (b) sets evolve from convex to nonconvex when they are isoperimetric solutions. Consider the curvature of the inner arc as a parameter; since all these inner arcs will meet ∂B with constant angle, it turns that the enclosed volume is a decreasing function with respect to the curvature. So when volume increases, curvature of inner arcs goes from positive to negative, and hence type (b) sets go from convex to nonconvex.

3.3.2 The ball with density $\lambda < 1$.

We begin with describing the candidate isoperimetric sets; *mutatis mutandis*, most of the arguments are the same as in Section 3.3.1 for $\lambda > 1$.

Proposition 3.22 *The candidate isoperimetric sets are (see Figure 17):*

- (A) balls entirely contained in B ;
- (B) sets enclosed by two arcs with common endpoints: the first arc lies on ∂B , the second one is in $\mathbb{R}^2 \setminus B$ and meets ∂B with angle $\arccos \lambda$;

(C) balls meeting B orthogonally.

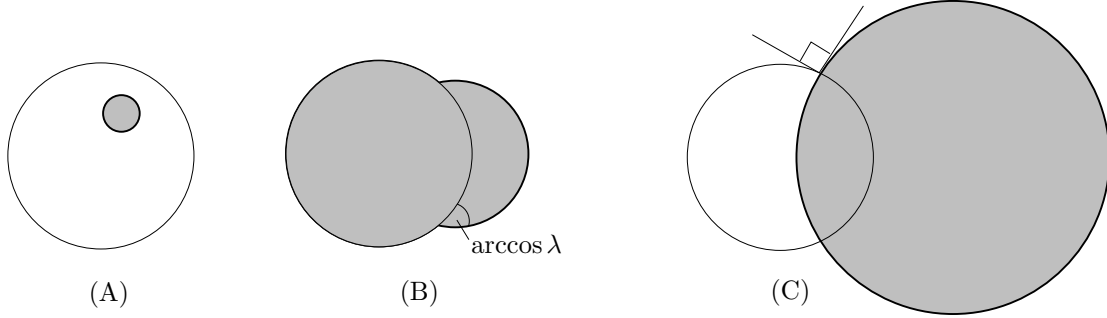


Figure 17: Candidate isoperimetric sets for the ball density with $\lambda < 1$.

PROOF. We closely follow the proof of Proposition 3.19. In many cases, it will be sufficient to exchange the roles of internal and external arcs. We now agree to call *internal* an arc lying on ∂B . Again, we denote by E an isoperimetric set of area v and by γ its boundary.

Step 1: E is either a ball inside B (i.e. a set of type (A)) or the closure of each of its components intersects both \overline{B} and $\mathbb{R}^2 \setminus \overline{B}$.

This point presents no substantial difficulty with respect to Step 1 in Proposition 3.19. In the rest of the proof we will suppose that E is not a type-(A) ball, i.e. that the closure of any of its component intersects both \overline{B} and $\mathbb{R}^2 \setminus \overline{B}$; in particular, it cannot be a ball in $\mathbb{R}^2 \setminus \overline{B}$. Notice also that the boundary of any component must meet ∂B : otherwise this component would be a ball enclosing B and with boundary out of \overline{B} , a configuration which is easily proved to be worse than a ball outside B with same area.

Step 2: Only a finite number of external arcs are allowed.

This is due to the fact that any external arc must leave ∂B with an angle between $\arccos \lambda$ and $\pi - \arccos \lambda$; curvature being constant, this means that each arc must determine on ∂B a corresponding arc whose length has a fixed positive lower bound. So only a finite number of arcs on ∂B can be determined, and the claim easily follows.

Step 3: Internal arcs cannot meet ∂B with angle strictly greater than $\pi/2$.

Step 4: Only a finite number of internal arcs is allowed: therefore E has regular traces on ∂B .

Step 5: The isoperimetric set is connected, enclosed by a piecewise \mathcal{C}^1 Jordan curve, and the Snell law (13) holds.

These proofs are exactly the same as in the corresponding Steps of Proposition 3.19: it is sufficient to exchange the words *internal* and *external*.

Step 6: An internal arc cannot meet ∂B transversally, unless the contact angle is $\pi/2$.

To prove this, one can follow again the proof of the corresponding Step 6 in Proposition 3.19, where however we excluded balls of type (C). This cannot be done in the $\lambda < 1$ setting: we will instead show numerically that such a configuration can be isoperimetric (see the proof of Theorem 3.23).

Step 7: Reduction to cases (B) and (C).

We have shown that internal arcs can be only tangential or orthogonal to ∂B , and that there are only finitely many of them. If tangential, they have to lie on ∂B ; otherwise they would have curvature more than 1, thus being complete circles inside B . Therefore, a connected component whose boundary possesses one (or more) arc on ∂B must be bounded by exactly one external arc and one arc on ∂B ; otherwise one could rotate the external arcs until forbidden meetings are obtained. Such a component falls into case (B) and must enclose the ball B ; moreover, the angle between the external arc and ∂B must be $\arccos \lambda$.

We have shown that the components can be only of type (B) or (C). Were there more than one, we could use rotation arguments to obtain a contradiction. This concludes the proof. \square

Figure 18 shows the graphs of perimeter as function of the enclosed area for candidates in the case $\lambda = 1/2$: the dotted, dashed and solid lines refer, respectively, to candidates (A), (B) and (C). Then it is then not surprising the following Theorem.

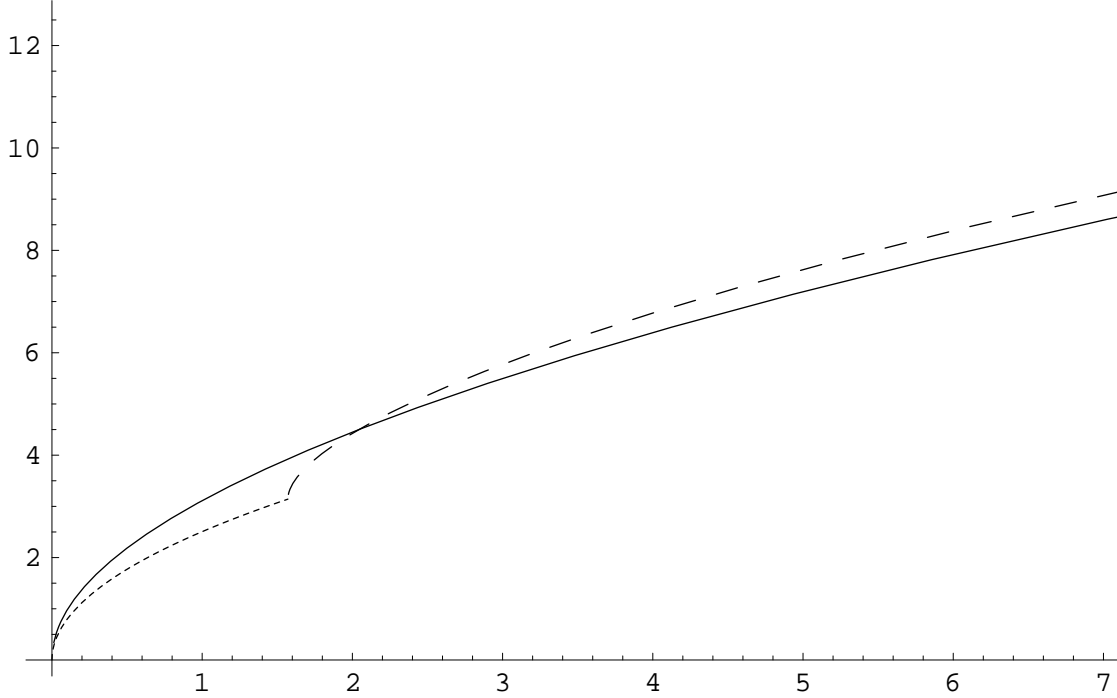


Figure 18: Perimeter as function of area for three candidates in ball density with $\lambda < 1$.

Theorem 3.23 *For the plane with density $\lambda < 1$ on the unit ball and 1 elsewhere, there exist some values $v_1, v_2 > \lambda\pi$ such that the isoperimetric set of volume v is given by*

1. a ball of type (A) if $v \leq \lambda\pi$;
2. a set of type (B) if $\lambda\pi \leq v \leq v_1$;
3. a set of type (B) or (C) if $v_1 < v < v_2$;
4. a ball of type (C) if $v \geq v_2$.

Remark. We believe that $v_1 = v_2$ in the previous Theorem 3.23; that is, once sets of type (B) fail to be isoperimetric, type (C) sets are the solutions for larger volumes. We have observed this fact numerically, although we are not able to give a rigorous proof of it.

PROOF. Since it will be useful in the sequel, we compute explicitly the perimeter and area of candidates (B) and (C). For type-(B) sets, let 2β be the angle determined by the external arc; by $\alpha = \beta + \arccos \lambda$ we denote half of the angle at the center of ∂B formed by the arc on ∂B (see Figure 19). It is not difficult to show that $0 \leq \beta \leq \pi - \arccos \lambda$ and that, after setting $r := \sin \alpha / \sin \beta$ to be the radius of the external arc, the perimeter is

$$P_B = 2((\pi - \beta)r + \lambda\alpha)$$

while the enclosed area is

$$A_B = r^2(\pi - \beta + \sin \beta \cos \beta) + (\alpha - \sin \alpha \cos \alpha) - (1 - \lambda)\pi.$$

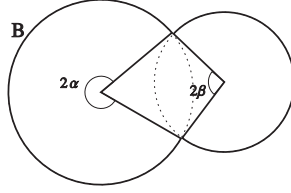


Figure 19: Type-(B) set

Regarding balls of type (C), if $2\hat{\beta}$ is the angle at the center determined by the internal arc, then the radius of the ball will be $\hat{r} := 1/\tan \hat{\beta}$. Therefore, the perimeter will be given by

$$P_C = 2 \frac{\pi - (1 - \lambda)\hat{\beta}}{\tan \hat{\beta}}$$

and the area enclosed by

$$A_C := \frac{\pi - (1 - \lambda)(\hat{\beta} - \sin \hat{\beta} \cos \hat{\beta})}{\tan^2 \hat{\beta}} - (1 - \lambda) \left(\frac{\pi}{2} - \hat{\beta} - \sin \hat{\beta} \cos \hat{\beta} \right).$$

Since type-(B) sets enclose the ball B , for area bounds less than $\lambda\pi$ we have only to compare candidates (A) and (C). To prove the first part of the statement it will be sufficient to show that the ratio P_C^2/A_C is strictly greater than $4\lambda\pi$, which is the same ratio computed for (A)-balls. Let us rewrite A_C as

$$\begin{aligned} A_C &= \frac{\pi - (1 - \lambda)(\hat{\beta} - \sin \hat{\beta} \cos \hat{\beta})}{\tan^2 \hat{\beta}} - (1 - \lambda) \left(\frac{\pi}{2} - \hat{\beta} - \sin \hat{\beta} \cos \hat{\beta} \right) \\ &= \frac{1}{\tan^2 \hat{\beta}} \left(\pi - (1 - \lambda)\hat{\beta} - (1 - \lambda) \tan \hat{\beta} (-\cos^2 \hat{\beta} + (\frac{\pi}{2} - \hat{\beta}) \tan \hat{\beta} - \sin^2 \hat{\beta}) \right) \\ &= \frac{1}{\tan^2 \hat{\beta}} \left(\pi - (1 - \lambda)\hat{\beta} - (1 - \lambda) \tan \hat{\beta} \left((\frac{\pi}{2} - \hat{\beta}) \tan \hat{\beta} - 1 \right) \right). \end{aligned}$$

The desired inequality $P_C^2 > 4\lambda\pi A_C$ is equivalent to

$$\left(\pi - (1 - \lambda)\hat{\beta} \right)^2 > \lambda\pi \left(\pi - (1 - \lambda)\hat{\beta} - (1 - \lambda) \tan \hat{\beta} \left((\frac{\pi}{2} - \hat{\beta}) \tan \hat{\beta} - 1 \right) \right)$$

i.e.

$$(1 - \lambda)\pi^2 > (1 - \lambda) \left[2\pi\hat{\beta} - (1 - \lambda)\hat{\beta}^2 - \lambda\pi\hat{\beta} - \lambda\pi \tan \hat{\beta} \left((\frac{\pi}{2} - \hat{\beta}) \tan \hat{\beta} - 1 \right) \right]$$

and in turn to

$$-2\pi \left(\frac{\pi}{2} - \hat{\beta} \right) - (1 - \lambda)\hat{\beta}^2 - \lambda\pi\hat{\beta} - \lambda\pi \left(\frac{\pi}{2} - \hat{\beta} \right) \tan^2 \hat{\beta} + \lambda\pi \tan \hat{\beta} < 0.$$

Remembering that $\hat{\beta} \in [0, \pi/2]$, setting $\theta := \frac{\pi}{2} - \hat{\beta}$ and discarding the negative term $-(1 - \lambda)\hat{\beta}^2 - \lambda\pi\hat{\beta}$, it will be sufficient to show that

$$2\pi\theta + \frac{\lambda\pi\theta}{\tan^2 \theta} - \frac{\lambda\pi}{\tan \theta} = \frac{\pi}{\tan^2 \theta} [2\theta \tan^2 \theta + \lambda\theta - \lambda \tan \theta] > 0.$$

Recalling that $\theta \in [0, \pi/2]$ it will suffice to prove that $\psi(\theta) := 2\theta \tan^2 \theta + \lambda\theta - \lambda \tan \theta$ is positive in $[0, \pi/2]$. Indeed it holds $\psi(0) = 0$ and

$$\psi'(\theta) = 2 \tan^2 \theta + 4\theta \tan \theta (1 + \tan^2 \theta) + \lambda - \lambda - \lambda \tan^2 \theta > 0$$

which allows to conclude because $\lambda < 1$.

For area bounds greater than $\lambda\pi$ we have only to compare candidates (B) and (C). From above we have that the type-(C) ball for area $\lambda\pi$ has perimeter greater than $2\lambda\pi + \delta$, with $\delta > 0$; this will

happen for any (C)-ball with area greater than $\lambda\pi$. The second part of the statement follows by noticing that, when the area A_B of the (B)-candidate decrease to $\lambda\pi$ (equivalently when $r \downarrow 0$, i.e. $\alpha \uparrow \pi$, i.e. $\beta \uparrow \pi - \arccos \lambda$), its perimeter P_B decreases to $2\lambda\pi$.

When considering a type (B)-candidate associated with an external ball of radius r , straightforward computations give

$$A_B(r) = \pi r^2 + O(1) \quad \text{and} \quad P_B(r) = 2\pi r + 2\arccos \lambda - 2\sqrt{1 - \lambda^2} + O(1/r^2)$$

for large r . Analogously, for a type-(C) ball of big radius r_C we have

$$A_C(r_C) = \pi r_C^2 + O(1) \quad \text{and} \quad P_C(r_C) = 2\pi r_C - 2(1 - \lambda) + O(1/r_C^2).$$

By imposing the equality $A_C(r_C) = A_B(r)$ of enclosed areas, in order to compute r_C as function of r , one obtains $r_C = r + O(1/r)$. To show that $P_C(r_C(r)) < P_B(r)$ for large areas, we just need to prove that

$$-2(1 - \lambda) + O(1/r) < 2\arccos \lambda - 2\sqrt{1 - \lambda^2} + O(1/r^2)$$

for large r . Therefore it will be sufficient to show that $f(\lambda) := \arccos \lambda - \sqrt{1 - \lambda^2} + 1 - \lambda$ is strictly positive for any $\lambda \in]0, 1[$: this in turn follows since $f(1) = 0$ and

$$f'(\lambda) = -\frac{1 - \lambda}{\sqrt{1 - \lambda^2}} - 1 = -\sqrt{\frac{1 - \lambda}{1 + \lambda}} - 1 < 0 \quad \text{for any } \lambda \in]0, 1[.$$

□

4 Modifications of Gauss density on the plane

This section provides partial results on the isoperimetric problem for certain modifications of Gaussian density Ce^{-cr^2} on the plane. Previously, Borell [6] and Rosales et al. [26, Introduction and Section 5] proved by symmetrization that for the density e^{r^2} isoperimetric regions are balls about the origin.

Recently, Brock et al. [7] proved that for the modified Gauss space $x_N^k e^{-|x|^2}$, $k \geq 0$, on the half-space \mathbb{R}_+^N , isoperimetric sets are bounded by vertical hyperplanes. The same argument also shows that the same holds if we consider the density $|x_N^k| e^{-|x|^2}$ on the whole space \mathbb{R}^N , simply by considering the reflection with respect to the hyperplane $x_N = 0$. In fact, if E is an isoperimetric set, then $E \cap \mathbb{R}_+^N$ is isoperimetric with respect to its volume bound, so its boundary in \mathbb{R}_+^N has to be a vertical hyperplane.

It is worth noticing that in the planar case $N = 2$ and with $k = 1$, vertical and horizontal lines are the only straight lines with constant generalised curvature; moreover, the only circles with constant generalised curvature are the one centered at the origin.

Motivated by these results, we will now consider the density in the plane defined by

$$f(x, y) = \exp(-x^2 - y^4), \quad (x, y) \in \mathbb{R}^2. \tag{29}$$

Since the total mass is finite we have existence of isoperimetric regions for any prescribed volume. We state the following

Conjecture 4.1 *For density (29) on the plane, every isoperimetric region is bounded by a horizontal line (for prescribed volumes close to half the total volume) or by a vertical line.*

We trivially have the following lemma.

Lemma 4.2 *Vertical and horizontal lines are the unique straight lines with constant generalised mean curvature. Furthermore, circles do not have constant generalised mean curvature.*

A first consequence of the previous lemma is that no arc of a circle will be contained in the boundary of an isoperimetric region. We now proceed to compare the perimeter of vertical and horizontal lines enclosing the same volume. We shall see that, for some volumes, vertical lines are better, while horizontal lines beat vertical ones for other volumes.

Proposition 4.3 *For volume fractions near 1/2, horizontal lines have less perimeter than vertical lines, and for small or large volumes, vertical lines have less perimeter than horizontal ones.*

PROOF. For $y \in [0, +\infty)$, let $R_h(y)$ be the horizontal line $\{(x, y) : x \in \mathbb{R}\}$. This line bounds a region with volume equal to

$$v_h(y) = \frac{\sqrt{\pi}}{4} \Gamma\left(\frac{1}{4}, y^4\right),$$

where Γ represents the Gamma function of two arguments. On the other hand, for the perimeter of the region bounded by $R_h(y)$ we have

$$P_h(y) = \sqrt{\pi} e^{-y^4}.$$

For $x \in [0, +\infty)$, let $R_v(x)$ be the vertical line $\{(x, y) : y \in \mathbb{R}\}$. Then, the region bounded by this line has a volume equal to

$$v_v(x) = \sqrt{\pi} \Gamma\left(\frac{5}{4}\right) (1 - \text{Erf}(x)),$$

where Erf is the error function. Moreover, the perimeter of the region bounded by $R_v(x)$ is given by

$$P_v(x) = 2 \Gamma\left(\frac{5}{4}\right) e^{-x^2}.$$

Given $y, x \in [0, +\infty)$, it is easy to check that $v_h(y) = v_v(x)$ if and only if

$$\text{Erf}(x) = 1 - \frac{\Gamma\left(\frac{1}{4}, y^4\right)}{4 \Gamma\left(\frac{5}{4}\right)}. \quad (30)$$

Consider now $y, x \in [0, +\infty)$ satisfying condition (30). Then

$$\begin{aligned} P_v(x) < P_h(y) &\Leftrightarrow \frac{e^{-x^2}}{e^{-y^4}} < \frac{\sqrt{\pi}}{2 \Gamma\left(\frac{5}{4}\right)} \\ &\Leftrightarrow \log\left(\frac{e^{-x^2}}{e^{-y^4}}\right) < \log\left(\frac{\sqrt{\pi}}{2 \Gamma\left(\frac{5}{4}\right)}\right) \\ &\Leftrightarrow -x^2 + y^4 < \log\left(\frac{\sqrt{\pi}}{2 \Gamma\left(\frac{5}{4}\right)}\right) \sim -0.02251. \end{aligned} \quad (31)$$

Hence, if this last condition is satisfied, the corresponding vertical line is isoperimetrically better than the horizontal line.

Observe that the left hand side in condition (31) can be expressed as a function of y , by using (30). Numerical computations show that for values of y close to zero, e.g. when

$$y \in [-0.15, 0.15],$$

the left hand side in (31) is greater than -0.02251 , and so, horizontal lines are better. For

$$|y| > 0.16,$$

such a term is less than -0.02251 and so vertical lines are better. This completes the proof. \square

Remark 4.4 In this situation, domains bounded by two (symmetric) lines can be easily discarded, since the perimeters of horizontal and vertical lines are strictly decreasing functions.

Remark 4.5 Proposition 4.3 indicates that vertical or horizontal lines may appear as minimisers. As in [7], given a set $\Omega \subset \mathbb{R}^2$, we could apply two adapted Steiner symmetrisations (one in the vertical direction and another one in the horizontal direction), to obtain another set $\Omega^* \subset \mathbb{R}^2$ which would have the same volume and no more perimeter than Ω .

Remark 4.6 In this setting, it can be checked that horizontal lines far away from the origin (i.e. for small or large volumes) are unstable by using the second variation formula (see [26, Proposition 3.6]) with a suitable mean zero function. Unfortunately, the study of the stability of the rest of the lines seems a harder question.

5 Open questions

The study of manifolds with density, and of the isoperimetric problem in particular, is relatively recent, and many related works have appeared during the last years [23, 10, 26]. In this section, we will list several open problems in this setting: some of them (Questions 1–4) are closely related to the present paper, while the other ones arose during Morgan’s lectures on “Manifolds with density” at the GMTLAP meeting in Modena, February 2007.

Question 1 [The strip case] Conjecture 3.12 remains open: as we said we think that a four–arc candidate (iv) cannot be isoperimetric, but we are presently not able to prove this.

Question 2 [The ball case] The case $\lambda < 1$ in Section 3.3.2 is not completely solved (see Theorem 3.23): it is left to prove that, once sets of type (C) are isoperimetric, type (B) sets cannot be solutions for any other larger volume.

It would be also interesting to investigate the ball density problem in \mathbb{R}^N , $N \geq 3$. For $\lambda > 1$ and volume $v \geq \lambda \omega_N$ balls containing B are isoperimetric: the proof is the same as the planar case.

One could further imagine densities which are constantly 1 on \mathbb{R}^2 except for some balls: this situation seems particularly interesting, since it may well provide non–connected isoperimetric sets. Consider for example the piecewise constant density λ on $B \cup B'$ and 1 outside, where $\lambda \gg 1$ and B, B' are two sufficiently distant balls of radius one. It is not difficult to show that isoperimetric sets, at least for some area bounds, are not connected. In fact, take $2\pi\lambda$ as prescribed area: were the isoperimetric set connected, by Theorem 3.20 it would consist of a ball containing B or B' , but not both of them as they are chosen far away (recall the diameter estimate (1)). Therefore, its density perimeter would be at least $2\pi\sqrt{\lambda}$, while $B \cup B'$ satisfies the area bound with perimeter 4π , which is smaller for large values of λ .

Question 3 [Plane with density $\exp(-x^2 - y^4)$] Conjecture 4.1 (isoperimetric boundaries are given by horizontal or vertical lines) is still open, since we have not determined other possible competitors.

Question 4 Other modifications of the Gaussian density on the plane would be worth investigating. For instance, we propose the density $f(x, y) := \exp(-x^4 - y^4)$ on \mathbb{R}^2 . An interesting approach seems to be related to a work by S. Bobkov [3], where it is proved that half-spaces are isoperimetric in \mathbb{R}^N with density given as a product $f(x) = \varphi(x_1) \cdots \varphi(x_N)$, under certain assumptions on φ . Unfortunately, these hypothesis are not quite satisfied in our case $\varphi(x) = e^{-x^4}$.

Question 5 [Proposed by A. Brancolini] Consider \mathbb{R}^2 endowed with a density attaining its minimum value in several points. Then it is reasonable to think that for small prescribed areas an isoperimetric region should be a nearly round disc containing one of these points. The reader may compare this with [26, § 5], where this result is proven for a particular density with a unique minimum point.

Question 6 [Proposed by A. Brancolini] Another interesting question consists of finding the isoperimetric regions in Euclidean space endowed with a density which is a finite sum of Gaussian measures with different barycenters and variances. In the particular case that all the barycenters lie in the same line ℓ , orthogonal lines to ℓ seem nice candidates for being the solutions.

Question 7 Which regions (with rectifiable boundary) are isoperimetric for some density? Probably any smooth region has this property. Take a density with very low values along the boundary, perhaps a low constant value with normal derivative determined by the constant generalised mean curvature condition.

Question 8 [Proposed by S. Ansaloni] Consider the sphere S^2 endowed with some density such as

$$f(\theta, \phi) := (1 - \sin \phi)^{-p},$$

where $\phi \in [-\frac{\pi}{2}, \frac{\pi}{2}]$ is the latitude. Here the conjectured isoperimetric sets are polar caps.

Question 9 [Proposed by A. Pratelli] Fairly recent “quantitative” isoperimetric inequalities show that a set with perimeter close to the optimal one must approximate a minimiser in shape (see [18]). Can such results be generalised to manifolds with density?

Question 10 Suppose the density f is “conic”, i.e. constant along rays starting from the origin. Give necessary conditions for a cone C to be the boundary of a perimeter–minimising set. The main case is given by the half-space density and the Snell refraction law is one necessary condition. Such results could be used more generally. Take a point of an isoperimetric boundary which is also a discontinuity point for the density, and perform a blow-up. In the limit the above situation is retrieved.

References

- [1] L. Ambrosio, N. Fusco and D. Pallara. *Functions of Bounded Variation and Free Discontinuity Problems*. Oxford University Press, New York, 2000.
- [2] V. Bayle. *Propriétés de concavité du profil isopérimétrique et applications*. Thèse de Doctorat, 2003.
- [3] S. Bobkov. Extremal properties of half-spaces for log-concave distributions. *Ann. Probab.*, 24 (1), 35–48, 1996.
- [4] S. Bobkov. An isoperimetric property on the discrete cube, and an elementary proof of the isoperimetric inequality in Gauss space. *Ann. Probab.*, 25 (1), 206–214, 1997.
- [5] C. Borell. The Brunn-Minkowski inequality in Gauss space. *Invent. Math.*, 30 (2), 207–216, 1975.
- [6] C. Borell. *The Ornstein-Uhlenbeck velocity process in backward time and isoperimetry*. Chalmers University of Technology, 1986.
- [7] F. Brock, F. Chiacchio and A. Mercaldo. A class of degenerate elliptic equations and a Dido’s problem with respect to a measure *J. Math. Anal. Appl.*, 348, 356–365, 2008.
- [8] Y.D. Burago and V.A. Zalgaller. *Geometric Inequalities*. Translated from the Russian by A.B. Sosinskiĭ. Grundlehren der Mathematischen Wissenschaften [Fundamental Principles of Mathematical Sciences] (285). Springer Series in Soviet Mathematics. Springer-Verlag, Berlin, 1988.
- [9] E.A. Carlen and C. Kerse. On the cases of equality in Bobkov’s inequality and Gaussian rearrangement. *Calc. Var.*, 13, 1–18, 2001.

- [10] C. Carroll, A. Jacob, C. Quinn and R. Walters, The isoperimetric problem on planes with density, *Bull. Aust. Math. Soc.*, 78, 177–197, 2008.
- [11] M. Chlebík, A. Cianchi and N. Fusco. The perimeter inequality under Steiner symmetrization: Cases of equality. *Ann. of Math.*, 162, 545–555, 2005.
- [12] E. De Giorgi. Su una teoria generale della misura $(r - 1)$ -dimensionale in uno spazio ad r dimensioni. *Ann. Mat. Pura Appl. (4)*, 36, 191–213, 1954.
- [13] E. De Giorgi. Nuovi teoremi relativi alle misure $(r - 1)$ -dimensionali in uno spazio ad r dimensioni. *Ricerche Mat.*, 4, 95–113, 1955.
- [14] E. De Giorgi. Sulla proprietà isoperimetrica dell'ipersfera, nella classe degli insiemi aventi frontiera orientata di misura finita. *Atti Accad. Naz. Lincei. Mem. Cl. Sci. Fis. Mat. Nat. Sez. I (8)*, 5, 33–44, 1958.
- [15] E. De Giorgi. Selected Papers. Springer-Verlag, Berlin, 2006.
- [16] H. Federer. Geometric Measure Theory. Die Grundlehren der mathematischen Wissenschaften, Band 153. Springer-Verlag New York Inc., New York, 1969.
- [17] J. Foisy, M. Alfaro, J. Brock, N. Hodges and J. Zimba, The standard double soap bubble in \mathbf{R}^2 uniquely minimizes perimeter. *Pacific J. Math.*, 159 (1), 47–59, 1993.
- [18] N. Fusco, F. Maggi and A. Pratelli. The sharp quantitative isoperimetric inequality. *Ann. of Math.*, 168 (3), 941–980, 2008.
- [19] E. Giusti. Minimal Surfaces and Functions of Bounded Variation. Monographs in Mathematics, 80. Birkhäuser Verlag, Basel, 1984.
- [20] M. Gromov. Isoperimetry of waists and concentration of maps. *Geom. Funct. Anal.*, 13, 178–215, 2003
- [21] R. Harvey and H. B. Lawson, Jr. Calibrated geometries, *Acta Mat.*, 148, 47–157, 1982.
- [22] F. Morgan. Regularity of isoperimetric hypersurfaces in Riemannian manifolds. *Trans. Amer. Math. Soc.*, 355 (12), 5041–5052 (electronic), 2003.
- [23] F. Morgan. Manifolds with density. *Notices Amer. Math. Soc.*, 52 (8), 853–858, 2005.
- [24] F. Morgan. Geometric Measure Theory: A Beginner's Guide. Academic Press Inc., San Diego, 4th edition, 2008.
- [25] A. Ros. The isoperimetric problem. Global Theory of Minimal Surfaces, 175–209, Clay Math. Proc., 2. Amer. Math. Soc., Providence, 2005.
- [26] C. Rosales, A. Cañete, V. Bayle and F. Morgan. On the isoperimetric problem in Euclidean space with density *Calc. Var. Partial Differential Equations*, 31 (1), 27–46, 2008.
- [27] V. N. Sudakov, B. S. Tsirel'son. Extremal properties of half-spaces for spherically invariant measures. *J. Soviet. Math.*, 9–18, 1978.
- [28] G. Talenti. The standard isoperimetric theorem, in Handbook of Convex Geometry, vol. A, 73–123. Edited by P. M. Gruber and J. M. Wills, Amsterdam, 1993.