












ORIGINAL RESEARCH

The influence of road networks on brown bear spatial distribution and habitat suitability in a human-modified landscape

E. González-Bernardo¹ , M. d. M. Delgado¹ , D. G. G. Matos¹ , A. Zarzo-Arias^{2,3,4} ,
A. Morales-González⁵ , H. Ruiz-Villar¹ , M. Skuban^{6,7} , L. Maiorano⁸ , P. Ciucci⁸ ,
J. Balbontín⁹  & V. Penteriani¹ 

¹Biodiversity Research Institute (IMIB, Spanish National Research Council CSIC- University of Oviedo-Principality of Asturias), Mieres, Spain

²Department of Applied Geoinformatics and Spatial Planning, Faculty of Environmental Sciences, Czech University of Life Sciences Prague, Suchbát, Praha, Czech Republic

³Universidad de Oviedo, Oviedo, Asturias, Spain

⁴Department of Biogeography and Global Change, Museo Nacional de Ciencias Naturales (MNCN-CSIC), 28006, Madrid, Spain

⁵Department of Conservation Biology, Estación Biológica de Doñana (EBD-CSIC), Sevilla, Spain

⁶Carpathian Wildlife Society, Zvolen, Slovakia

⁷Slovak State Nature Conservancy, Banská Bystrica, Slovakia

⁸Department of Biology and Biotechnologies "Charles Darwin", University of Rome "La Sapienza", Rome, Italy

⁹Department of Zoology, Faculty of Biology, University of Sevilla, Sevilla, Spain

Keywords

brown bear; human-modified landscapes; large carnivores; road ecology; *Ursus arctos*.

Correspondence

Enrique González-Bernardo and Vincenzo Penteriani, Biodiversity Research Institute (IMIB, Spanish National Research Council CSIC- University of Oviedo-Principality of Asturias), Campus Mieres, 33600 Mieres, Spain.
Email: gonzalezbernardoenrique@gmail.com and v.penteriani@csic.es

Editor: Femke Broekhuis

Associate Editor: Martin Leclerc

Received 15 February 2022; revised 31 August 2022; accepted 5 September 2022

doi:10.1111/jzo.13023

Abstract

Roads are human infrastructure that heavily affect wildlife, often with marked impacts on carnivores, including brown bears *Ursus arctos*. Here, we assessed the potential impact of road networks on the distribution of brown bears in the small, isolated and endangered Cantabrian population of north-western Spain. To ascertain whether local road networks affect brown bear spatial distribution, we first assessed potential influences on the distance of bear locations to roads using candidate models which included topographic variables, landcover types, bear age and reproductive status, traffic volume and road visibility. Then, we built two sets of habitat suitability models, both with and without roads, to discern the possible loss of habitat suitability caused by roads. The mean distance of bear locations to the nearest road was 968 ± 804 m and the closest road was a low traffic road in 72.5% of cases. Candidate models showed little influence of our variables on bear distance to the nearest road, with the exception of elevation. Habitat suitability models revealed that road networks in our study area seem to have almost no effect on brown bear habitat suitability, except for females with yearlings during the denning season. However, this result may also be a consequence of the fact that only a small proportion (16.5%) of the cells classified as suitable bear habitats were crossed by roads, that is, most of the roads are primarily located in unsuitable bear habitats in the Cantabrian Mountains. Compared to previous studies conducted in other populations, mainly North American ones, our findings might suggest a different response of Eurasian brown bears to roads due to a longer bear-human coexistence in Europe versus North America. However, the indirect approach used in our study does not exclude other detrimental effects, for example, road mortality, increased stress and movement pattern disruption, only detectable by more direct approaches such as telemetry.

Introduction

Roads are one of the most ubiquitous human infrastructures and have frequently been shown to have crucial effects on wildlife (Zeller et al., 2021). Road networks can: (a) affect

surrounding ecosystems by increasing pollutants due to vehicle traffic (Forman et al., 2003); (b) facilitate the arrival and spread of non-native species (Schowalter, 1988; Watkins et al., 2003); (c) allow human access to previously pristine areas (Lamb et al., 2018; Steyaert et al., 2016); (d) modify

ecological communities (Trombulak & Frissel, 2000); (e) fragment and/or destroy habitats (Coffin, 2007; Forman *et al.*, 2003; Riitters *et al.*, 2004); (f) increase wildlife mortality (Morales-González *et al.*, 2020; Penteriani *et al.*, 2018); and (g) represent barriers to movement that may reduce population viability and gene exchange (Epps & Keyghobadi, 2015; Holderegger & Di Giulio, 2010; Shepard *et al.*, 2008). Moreover, these effects vary depending on road type and consequent traffic loads (Chen & Koprowski, 2019; Koreň *et al.*, 2011; Northrup *et al.*, 2012), which may modify animal behaviour (Barber *et al.*, 2010; Morales-González *et al.*, 2020), habitat selection and parental investment (Frid & Dill, 2002), as well as increase energetic costs and physiological stress of animals (Houston *et al.*, 2012; Jacobson *et al.*, 2016; Wasser *et al.*, 2011). However, not all the effects of roads are deleterious *per se*, and it has been reported how roads can function as attractants, providing advantages for communication, foraging, movement, refuge or thermoregulation (Hill *et al.*, 2021).

Wide-ranging mammals with low reproductive rates and low densities (e.g. large carnivores) are particularly vulnerable to the various effects of roads and vehicle traffic (Alexander *et al.*, 2005; Kautz *et al.*, 2021; Rytwinski & Fahrig, 2015). For example, roads can negatively impact tiger *Panthera tigris* survival and reproductive rates (Kerley *et al.*, 2002). They can also influence, through road avoidance, the movement behaviour of jaguars *Panthera onca* (Colchero *et al.*, 2011) and wolves *Canis lupus* (Ciucci *et al.*, 2018; Dennehy *et al.*, 2021). Indeed, the fragmentation of carnivore populations caused by roads (Fahrig & Rytwinski, 2009) can affect the functioning of entire ecosystems due to the ecological role large carnivores play as apex predators (Ordiz *et al.*, 2013, 2014).

Among large carnivores, the multiple, non-exclusive effects of roads on brown bears *Ursus arctos* have been extensively studied, mainly in North America. For example, avoidance patterns (Proctor *et al.*, 2020; Støen *et al.*, 2020) and fast displacement rates (Kite *et al.*, 2016; Roever *et al.*, 2010) have been described in areas surrounding roads, with bears selecting higher elevations and steeper slopes because they are further away from roads and, consequently, less accessible to humans (Goldstein *et al.*, 2010; Nams *et al.*, 2006). The impact of road networks also seems to depend on landcover types surrounding roads and periods of the bear life cycle, with higher probabilities of road crossings where roads intersect areas with dense vegetation cover offering shelter (Find'o *et al.*, 2019; Lyons *et al.*, 2018; Roever *et al.*, 2010) or during hyperphagia (Frackowiak *et al.*, 2014; Stewart *et al.*, 2013), due to the need to consume a large amount of food before hibernation. Similarly, roads have also been described as occasional attractants to brown bears as they facilitate communication (González-Bernardo *et al.*, 2021; Sato *et al.*, 2014) or movement (Hill *et al.*, 2021; Roever *et al.*, 2010). Along the same line, some age classes such as females with cubs and subadults may use roads to avoid risky encounters with adult males (Graham *et al.*, 2010; Penteriani *et al.*, 2018), as also occurs in other ursids (Gantchoff *et al.*, 2019). Moreover, traffic volume associated with the type of road has also been shown to determine the severity of road impacts on bears (Elfström *et al.*, 2008;

Northrup *et al.*, 2012). In fact, increasing traffic intensities are often associated with stronger avoidance (Jacobson *et al.*, 2016; Mace *et al.*, 1999) and decreasing permeability (Find'o *et al.*, 2019; Skuban *et al.*, 2017), affecting movement rates (Proctor *et al.*, 2012; Roever *et al.*, 2010) and altering rhythms of activity (Støen *et al.*, 2020; Waller & Servheen, 2005). Finally, one aspect of roads that might affect bears and has never been explored as a factor of disturbance (but see the analyses of traffic kills sites in Huber *et al.*, 1998) is road visibility (i.e. a viewshed, the part of the environment assumed to be visible to an animal in a given location, Tandy, 1967). In recent years, it has been advocated that the quantification of an animal's potential visual space may improve our understanding of animal use of an environment (Aben *et al.*, 2018), but still few examples exist on the link between visibility and large carnivores (Davies *et al.*, 2016; Grant *et al.*, 2005).

Here, we assessed the impact of the road network on the spatial distribution of brown bears in the small, isolated and endangered population inhabiting the human-modified landscape of the Cantabrian Mountains in north-western Spain. We predicted that bear locations would be closer to roads when: (1) individuals were in areas with dense vegetal cover compared to open habitats; (2) roads were not visible; (3) traffic level was low; (4) females had cubs during the mating season to decrease the risk of infanticide from encounters with adult males; and (5) during hyperphagia, as bears might use food resources associated with road edges. Predictions (1), (2) and (3) are related to a lower expected level of disturbance in these cases and therefore to less avoidance of roads by bears, while predictions (4) and (5) are related to specific seasonal circumstances. Furthermore, we tested the possibility that road networks may reduce habitat suitability for bears, an effect that we expect might be different depending on bear classes and seasonal cycles (Morales-González *et al.*, 2020; Penteriani *et al.*, 2018).

Materials and methods

Study area and bear population

The study area encompasses the distribution range of the Cantabrian brown bear population in the provinces of León, Palencia and Asturias, north-western Spain (Fig. 1), which occupies an area of 4474 km² along the Cantabrian Mountains at an average elevation of 1100 m a.s.l. (maximum 2650 m; Penteriani *et al.*, 2019). The climate of the region is oceanic, more continental and drier along southern slopes and temperate and more humid on northern slopes (Ortega & Morales, 2015). The region is mainly covered by forests, shrublands and farmland. The forests of the southern slopes are mainly composed of semi-deciduous and evergreen oaks (*Quercus sp.*), whereas the northern slopes host mostly deciduous forests (*Fagus sylvatica*; *Q. robur*, *Q. petraea*; *Betula sp.*; García de Celis *et al.*, 2004; Mateo-Sánchez *et al.*, 2016). Non-forested areas are covered with shrubs such as broom (*Cytisus sp.*) and heather (*Erica sp.*, *Calluna sp.*), while above the tree line, berry shrubs such as bilberries appear (*Vaccinium myrtillus*; Mateo-Sánchez

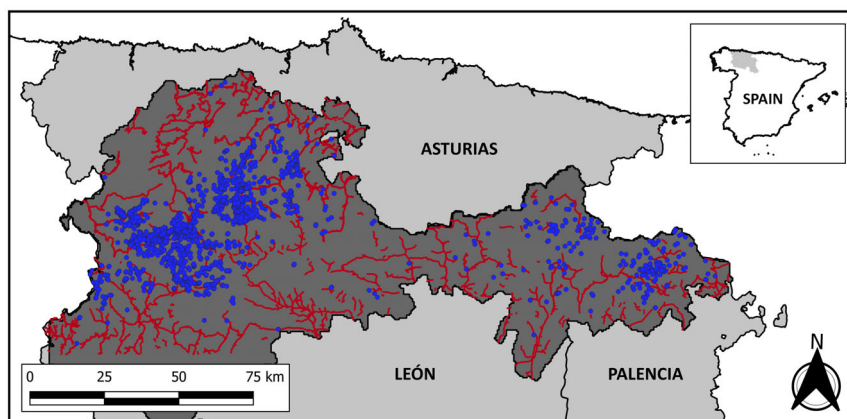


Figure 1 Bear locations and road sections included in the study area located in the Cantabrian Mountains (NW Spain). The provinces of Asturias, León and Palencia are shaded in light grey and the Cantabrian brown bear distribution range is shaded in dark grey. The 2722 bear locations are represented as blue dots, and road sections are shown as red lines. Due to the short distance that separates roads, only road sections of Types 2 and 3 (those with more traffic intensity, see Methods section) are depicted. Inset shows the location of the mapped area within the geographic limits of peninsular Spain.

et al., 2016; Pato & Obeso, 2012). In general, most suitable bear habitat patches are embedded in a matrix of urbanized and cultivated areas with a high density of transport routes and human settlements, where the main economic activities are livestock breeding, recreational activities, mining and timber harvesting (Zarzo-Arias *et al.*, 2019). Although the Cantabrian brown bear population trend in recent years has been positive (Gonzalez *et al.*, 2016), its size is still small (*c.* 250 individuals 10 years ago [Pérez *et al.*, 2014], and probably larger now due to this trend), and it continues to be considered as threatened (Boitani *et al.*, 2010; MITECO, 2022). The road network in the study area consists of a few high- and medium-capacity roads that connect the main urban areas and a majority of minor local roads that connect small mountain towns with each other or with the main roads. This road network has hardly changed in the last decades in the two regions studied, Asturias and Castilla y León (increases of 0.56% and 1.89%, respectively, between 2005 and 2019; MITMA, https://www.mitma.gob.es/recursos_mfom).

Bear dataset

Brown bear location data ($n = 2722$) were collected from 2000 to 2016 and were compiled from: (1) georeferenced visual observations and footprints ($n = 2012$; 73.9%) taken by the staff of the Junta de Castilla y León and the Principado de Asturias, primarily by the teams of the Patrulla Oso, (*i.e.* Bear Patrol), as well as by local NGO's such as the Fund for the Protection of Wild Animals (FAPAS), the Asturias Bear Foundation (FOA) and the Brown Bear Foundation (FOP); (2) camera traps randomly placed by the FAPAS and Bear Patrols during the last 20 years, mainly in forested areas where bears are less visible ($n = 478$; 17.6%) and (3) personal observations (visual observations and footprints) by the authors ($n = 232$; 8.5%). Databases of raw observations were thoroughly filtered (by deleting duplicates and cases with incomplete or inaccurate

information). The inclusion of records from camera trap locations represents an important part of this dataset as it also allows including data from areas where cover density would have prevented direct observations of individuals. The camera trap monitoring started in 2000 with analogical TRAIMASTER OLIMPUS DLX 20 camera traps, to which analogical CANON BF-8 camera traps were added. During the period 2000–2009, analogical TRAIMASTER and CANON PRIMA BF-8 camera traps were used every year. Starting from 2010 all camera traps (CUDEBACK CAPTURE and RECONIX) were digital. Then, starting from 2012, SCOUT GUARD SG550V and MINOX DTC600 camera traps replaced the CUDEBACK (Non Typical, Inc., Green Bay, Wisconsin, USA) and RECONIX traps (Holmen, Wisconsin, USA), whereas from 2016 to 2022 BUSHNELL TROPY CAM and BROWNING DARK OPS camera traps were only used. Camera traps were active 24 h a day and with a time lapse between each shot of: (a) 20 s for TRAIMASTER OLIMPUS DLX 20; (b) 30 s for CANON PRIMA BF-8 and CUDEBACK CAPTURE; (c) 8 s for SCOUT GUARD SG550V and MINOX DTC600; and (d) 1 s for RECONIX HC600, BUSHNELL TROPY CAM and BROWNING DARK OPS. Camera traps were mainly placed along forest trails, one of the main elements of the landscape that bears use for displacements (author's unpublished telemetry data).

Viewing points used by rangers and ourselves, as well as camera trap locations, were evenly distributed over: (a) the entire bear range in the study area (Penteriani *et al.*, 2019; Zarzo-Arias *et al.*, 2019); and (b) the whole year, winter included, as bear hibernation is facultative in the Cantabrian Mountains (González-Bernardo, Bombieri, *et al.*, 2020; Uzal *et al.*, 2022). Each observation was accompanied by information on the date and the age class of the observed bear, that is, adult or subadult solitary bear, female with cubs, female with yearlings. We classified the bear locations into three seasons, according to the annual cycle of this population: denning (January 1 to

April 15), mating (April 16 to June 30) and hyperphagia (July 1 to December 31; Zarzo-Arias *et al.*, 2021). Due to the mild winters of the area, food is also available during the winter months and not all bears in this population hibernate (González-Bernardo, Bombieri, *et al.*, 2020; González-Bernardo, Russo, *et al.*, 2020).

Model covariates

On the basis of the information obtained from previous studies on this bear population (Lamamy *et al.*, 2019; Zarzo-Arias *et al.*, 2019), we selected variables that may influence the distance of bear locations to the nearest road, including: topographic variables (elevation, slope, terrain ruggedness), landcover type, season, bear class, traffic volume and road visibility (Tables 1 and 2). Landcover information was extracted from the CNIG (Environmental Thematic Cartography of the Principality of Asturias; Sheets of the Map of Vegetation, Lithology, Rocks and Habitat of the Bear, 2011. Scale 1:25 000. © Principado de Asturias, Spain) and reclassified into seven landcover types: (1) forests, (2) shrubs, (3) pastures, (4) farmland, (5) rocky areas, (6) bare ground/water and (7) urban areas. The first six landcover types were used in the construction of the distance to road models (see 2.4.1 [Road network effects on brown bear spatial distribution](#)), while for the habitat suitability analyses we also included urban areas (see 2.4.2 [Potential impact of road networks on brown bear habitat suitability](#)).

The road layer of the study area was obtained from the CNIG, and the closest road and the closest visible road were selected for each bear location. These roads were classified into three groups based on the average daily volume of traffic, with data obtained from the public repositories of the Spanish Ministry of Public Works and Transport (MITMA, <https://www.mitma.es/carreteras>), the Castilla y León government (Junta de Castilla and León, <https://carreterasysportes.jcyl.es/web/es/carreteras-transportes.html>) and the Principado de Asturias government (SADEI, <https://sadei.es/inicio>). The unit of traffic volume was daily traffic intensity (IMD, i.e. vehicles/day, hereafter, v/d), taking as the value for each road the mean value of the average monthly IMD of the years 2012 to 2018, as these were the years with the most complete and modern data. The types of roads based on the IMD were established according to the 'natural breaks' method, which is based on the nature of the data and identifies important jumps in the sequence of values, optimizing the grouping of similar values and maximizing the differences between classes (Jenks, 1967). The road types for the roads considered

according to the ranges of IMD values established by the method are the following: Type 1 = 0–337 v/d; Type 2 = 338–1411 v/d and Type 3 = 1412–5129 v/d.

The topographic variables and viewsheds (to assess visibility) were calculated from a Digital Elevation Model and a Digital Surface Model respectively. Both models had a 30 m resolution and were based on a LiDAR (Light Detection and Ranging) data layer obtained from the CNIG (<https://centrodedescargas.cnig.es/CentroDescargas/index.jsp>), which has a minimum density of one point every 2 m and an altimetry precision of 15–20 cm. These data allow for the derivation of more precise viewsheds (Aben *et al.*, 2018; Lagner *et al.*, 2018), as they incorporate elements of the physical environment that may interfere with the field of vision of the observers (e.g. vegetation, topographic features or infrastructures).

To obtain visibility of the nearest road from each bear location, a raster of visible cells of the surface from one or more bear locations was calculated (i.e. the viewshed), with a range of 1000 m (visible cells = 1, non-visible cells = 0). The surface model takes into account the real height of vegetation and topographic elements through point clouds with three-dimensional coordinates obtained by airborne LiDAR sensors (Lorite *et al.*, 2015). As far as we know, there are no published data on the visual range or acuity of brown bears. However, different thresholds of proximity to roads have been described in which road avoidance can be detected, most of them being at least 500 m (Mace *et al.*, 1996; McLellan, 1989; Torres *et al.*, 2016; Waller & Servheen, 2005). As a result, we decided to conservatively set our road visibility threshold to at least twice the distance proposed for grizzly bears. Next, we merged viewsheds and the road layer (along with road type information), whereby road sections were assigned values ranging from 1 to 3 depending on the traffic load, with a value of 0 for non-visible ones. Finally, we calculated the distance from each bear location to the nearest road, which represented our response variable. All spatial variables (topographic, landcover, visibility and distance from bear location to the nearest road) were calculated using ArcGIS 10.5 software (ESRI, Redlands, USA).

Statistical analysis

Road network effects on brown bear spatial distribution

We built a candidate set of linear mixed models with the distance of each bear observation to the nearest road as a

Table 1 List of the numerical variables included in the models, their description and mean, standard deviation (sd), minimum and maximum values

Variable code	Description	Mean	sd	Min	max
Dnear	Distance to the nearest road	968.1	804.0	0.1	4594.3
Elevation	Altitude above sea level	1176.0	351.16	107.6	2207.3
Slope	Slope (%)	59.7	22.95	0.1	147.2
Ruggedness	Ruggedness index	1272.8	1592.16	2.2	9962.2

Table 2 List of non-numerical variables included in the models, their description and count by level within each variable

Variable code	Description	Values	N
Year	Year of observation	2000–2016	2722
Class	Class of bear	1 (Adult/subadult solitary bears)	1441
		2 (Female with yearlings)	201
		3 (Female with cubs)	1080
Season	Period of the bear lifecycle	1 (Mating, 16th April–30th June)	1122
		2 (Hyperphagia, 1st July–31st December)	1045
		3 (Denning, 1st January–14th April)	555
Land	Landcover	1: Forests	1420
		2: Shrubs	788
		3: Pastures	149
		4: Farmland	155
		5: Rocky areas	179
		6: Bare ground/water	31
Vis_near	Visibility of the nearest road	1 (visible)	1855
		0 (no visible)	867
Type_near	Type of the nearest road (by traffic intensity, IMD)	1: IMD: 0–337 vehicles/day	1974
		2: IMD: 338–1411 vehicles/day	426
		3: IMD: 1412–5129 vehicles/day	322

response variable and the topographic, landcover, traffic level and visibility variables as additive predictors. We log-transformed the response variable to approximate normality in the residuals and re-scaled the numeric predictor variables to mean = 0 and standard deviation = 1, in order to standardize their values. To account for spatial autocorrelation of bear presence data, we included in our model the autocovariate (*ac*) using the *spdep* R package (Bardos *et al.*, 2015; Bivand *et al.*, 2019). To exclude collinearity among the predictors, we calculated the variance inflation factor (VIF; Belsley *et al.*, 2005), but no variable exceeded a threshold of 2 (maximum VIF = 1.57). Models were built using the *lme4* R package (Bates *et al.*, 2015) and once we generated the sets of competing models, we employed the Akaike information criterion (AIC), using the value of $\Delta\text{AIC} < 2$ as the criterion for selecting the most parsimonious model (Anderson & Burnham, 2004; Richards *et al.*, 2011). All analyses were performed using R v. 3.5.1 statistical software (R Core Team, 2018).

Concerning our model, we assessed whether our visual observations, which comprise most of the location data, were biased towards open areas by comparing the same model built with and without visual observations. As both models produced comparable results, we believe observational bias, if any, has a negligible effect on model performance (see Fig. S1). To detect such a bias deriving from our data (consisting mainly of visual observations) we built a model with visual observations and another with only locations based on footprints, which are not biased by detectability since they are not more easily detectable in open terrain. Although the second model had few observations ($n = 189$), especially in some categorical variables due to the small number of cases, we observed similar trends and responses of the variables, thus discarding biases, and therefore we built the distance to road models with all the observations (Fig. S1). According to the

AIC-driven model selection, a random year in the model was not deemed necessary.

Potential impact of road networks on brown bear habitat suitability

To assess habitat suitability for brown bears in relation to the study area road network, we used the software MaxEnt version 3.3.3 k called from the R environment with the packages *dismo* (Hijmans *et al.*, 2017) and *ENMeval* (Muscarella *et al.*, 2014) following the methodology applied in Zarzo-Arias *et al.* (2019). To identify an optimal model structure for each input bear dataset, we evaluated candidate models with all types of feature combinations, each run over a set of regularization multipliers ranging from 0 to 19 (for more detailed information see Zarzo-Arias *et al.*, 2019). We included the same variables as in the previous model (landcover, elevation and slope) and distance to the nearest road at a 500 m scale, but removed ruggedness due to its high correlation with slope to avoid any potential multicollinearity ($\text{VIF} < 5$ for the remaining variables; Zuur *et al.*, 2010). Following the aforementioned methodology, we also included urban area as an additional landcover, not represented in the distance to road models (see Table S1). We made a model for each bear class in each season considering as a presence all 500 m grids with at least one occurrence, except for females with yearlings in hyperphagia as we only had four locations. In these models, we used 5000 iterations, a convergence threshold of 10^{-5} , the checkerboard1 method for data partitioning, 50 replicates and centre coordinates from all cells in the study area as background to build the models.

We identified the best combination of feature types and regularization multiplier using AICc. We considered models within 2 AICc units of each other to have equivalent empirical

support and chose the simplest as the best model (the one with the fewest parameters, and if equivalent, the one with the smallest number of feature types; Zarzo-Arias *et al.*, 2019; Table S2). We obtained the output maps of the best model for each group with the complementary log–log (cloglog) format, which allows interpreting values given to each cell from 0 to 1 as a likelihood of bear occurrence.

We extracted all cells crossed by a road for each bear type in each season and analysed their occurrence likelihood (Max-Ent cloglog values). For selecting a threshold to identify the most suitable bear range, we extracted the values predicted for occurrence locations of each bear class used to build the models from their corresponding model and calculated the mean of the values predicted by the model for all bear occurrence points, rounded up to a 70% likelihood of bear occurrence (cloglog value = 0.7, Table S3). We selected this value as the threshold and identified those cells above this threshold traversed by the different types of nearest road (see Model covariates). Finally, we performed a niche comparison analysis between models including and excluding the variable distance to roads based on Warren's *I* statistic (Warren *et al.*, 2008), which ranges from 0 (no overlap) to 1 (identical).

Results

More than half (52.9%) of bear locations were of solitary bears, 39.7% to females with yearlings and 7.4% to females with cubs. Observations were more frequent during the mating and hyperphagia seasons (41.2% and 38.4% respectively), followed by locations recorded during the denning season (20.4%). Most of the bear locations occurred within forests (52.2%) and shrublands (28.9%) and, to a lesser extent, rocky areas (6.6%), farmland (5.7%) and pastures (5.5%). In relation to bear distance to the nearest road, most locations (72.5%) occurred next to low-traffic roads, followed by moderate-traffic (15.7%) and high-traffic (11.8%) roads. The mean distance (\pm SD) of bear locations to the nearest road was 968 m \pm 804 m (min. = 0 m, max. = 4595 m) and the median (IQR) was 773 m (IQR = 1051; see Tables 1 and 2).

Road network effects on brown bear spatial distribution

The most parsimonious model showed that distance to the nearest road depended on bear class, season, landcover type, traffic level and visibility, as shown by the exclusion of zero in the 95% CI of the estimated parameter for these predictor terms (Table 3). Adjusted R-squared of the most parsimonious model with Δ AICc < 2 was 0.445. All these variables were present in the five competing models except for bear class, which was absent in one of them (Table 3). Specifically, females with yearlings and females with cubs were found closer to roads than solitary bears, with females accompanied by yearlings the closest to roads (Fig. 2a). Bears also were closer to roads during the mating season and they were found further away during hyperphagia and winter (Fig. 2b). Bears were closer to roads of intermediate traffic intensity (Fig. 2c) and closer

to visible roads compared to non-visible roads (Fig. 2d). Also, distance to the nearest road was lower in farmland, pastures and bare ground than in forests (Fig. 2e). These effects were found while controlling for confounding variables known to affect distance to roads, such as elevation (variable with more weight in the models), slope or ruggedness (Fig. 2f–h).

Potential impact of road networks on brown bear habitat suitability

Most models including and excluding the variable distance to the nearest road presented very similar values in terms of variable contribution (Table S4) and habitat suitability, as almost all bear classes had a weak positive relationship with this variable (Fig. S2) and its contribution to the models was generally low (<1.5%), denoting a small impact of road proximity on bear habitat suitability (Fig. S3). In turn, the most important variables were slope, which showed the highest proportional contribution to all models, followed by elevation and forests. In contrast, the model for females with yearlings during the denning season showed a higher contribution of the variable distance to the nearest road (13.4%; Table S4).

The 500 m cells crossed by a road were not classified by the models as highly suitable habitat for bears (less than 16.5% of those cells had more than 70% likelihood of bear occurrence), with little difference between seasons (Table S5, Fig. 3). Despite this, models including and excluding the distance to the nearest road variable presented similar habitat suitability. Actually, the mean niche overlap (based on Warren's *I* statistic) of cells crossed by a road between models was >0.99, showing a very high similarity.

Discussion

Here, we used two approaches to explore the potential impacts of road networks on the spatial distribution of brown bears belonging to a population inhabiting a human-modified landscape. Both approaches suggest that roads seem to have a rather small effect on bear spatial distribution and/or habitat suitability.

Several studies have previously described roads as a factor affecting brown bear behaviour (e.g. Kite *et al.*, 2016; Morales-González *et al.*, 2020; Proctor *et al.*, 2020; Skuban *et al.*, 2017), spatial distribution and habitat use, either by analysing bear distances to roads or by quantifying the density of road networks. However, in our study, we found that a large proportion of the variation in distance to the nearest road was explained by elevation. Taking into account the characteristics of the study area, where roads are generally located along valley bottoms as in other similar areas (Carpathians, Papp *et al.*, 2022), this relationship seemed to be circumstantial since brown bears tend to be more frequently located in higher areas so as to avoid human settlements and infrastructure along valley floors (Frackowiak *et al.*, 2014; Goldstein *et al.*, 2010). This possible explanation is also supported by the fact that elevation and distance to the nearest road presented a substantial Pearson's correlation (0.58) in our habitat suitability models.

Table 3 (a) LMs built to investigate variables influencing distance to the nearest road in the Cantabrian brown bear population ($n = 2722$ locations). The table shows the 5 models with the lowest AICc. Variable codes: elevation = altitude above the sea level, slope = slope (%), class = class of bear, season = period of the bear lifecycle, land = landcover, type_near = type of the nearest road (by traffic intensity, IMD), vis_near = visibility of the nearest road. (b) Effects of explanatory variables on the most parsimonious model. For each explanatory variable, we report the estimate (β), standard error (SE), significance (P), confidence intervals (CI) and explained variance (R^2) of the most parsimonious model

(a) Dependent variable	Competing models	d.f.	AICc	Δ AICc	Weight
Distance to the nearest road	Elevation + slope + class + season + land + type_near + vis_near + ac	17	5180.80	0.00	0.73
	Elevation + slope + class + season + ruggedness + land + type_near + vis_near + ac	18	5182.80	2.03	0.27
	Elevation + slope + class + season + land + type_near + vis_near	16	5193.00	12.22	0.00
	Elevation + slope + class + season + ruggedness + land + type_near + vis_near	17	5194.90	14.12	0.00
	Elevation + slope + season + land + type_near + vis_near + ac	15	5195.90	15.07	0.00

(b) Dependent variable	Explanatory variable	Model coefficients and relative importance values				
		β	SE	P	CI	R^2
Distance to the nearest road	Intercept	6.872	0.033	<0.001	(6.806; 6.937)	-
	Elevation	0.494	0.013	<0.001	(0.469; 0.520)	0.346
	Bear Class #2: FWY	-0.193	0.049	<0.001	(-0.289; -0.097)	0.006
	Bear Class #3: FCOY	-0.070	0.026	0.007	(-0.120; -0.019)	0.003
	Landcover #2: Shrubs	-0.066	0.029	0.022	(-0.123; -0.009)	0.002
	Landcover #3: Pastures	-0.242	0.056	<0.001	(-0.351; -0.132)	0.007
	Landcover #4: Farmland	-0.331	0.054	<0.001	(-0.437; -0.225)	0.014
	Landcover #5: Rocky areas	0.007	0.051	0.881	(-0.092; 0.107)	0.000
	Landcover #6: Bare ground/water	-0.525	0.115	<0.001	(-0.750; -0.300)	0.008
	Season #2: Hyperphagia	0.148	0.028	<0.001	(0.093; 0.203)	0.010
	Season #3: Winter/denning	0.243	0.034	<0.001	(0.175; 0.310)	0.018
	Slope	0.092	0.013	<0.001	(0.066; 0.117)	0.018
	Type of the NR: Type #2	-0.238	0.035	<0.001	(-0.305; -0.170)	0.017
	Type of the NR: Type #3	-0.038	0.038	0.321	(-0.113; 0.037)	0.000
Visibility of the NR: Visible	-0.270	0.028	<0.001	(-0.325; -0.216)	0.034	

Baseline levels for categorical variables are: 'forests' for landcover, 'solitary bears' for class of bear, 'mating' for season, 'Type 1' for type of the NR and 'not visible' for visibility of the NR.

The most important parameters are highlighted in bold.

FCOY, females with cubs of the year; FWY = females with yearlings.

Contrary to our expectations, habitat type, visibility of the nearest road and season did not seem to meaningfully affect brown bear distance to the nearest road. Moreover, our habitat suitability models were not affected by the inclusion of roads, except for the model that considered females with yearlings in the denning season. Despite the small sample size of this model ($n = 93$), we suggest that the impact of roads on the habitat suitability of females with yearlings during this season may be due to their higher activity level compared to other bear cohorts that are usually hibernating. In the southernmost populations and with mild winters, many bears do not hibernate, with the exception of pregnant females, and females with yearlings have been reported to hibernate less than all other bear classes (González-Bernardo, Russo, et al., 2020). Additionally, as the habitat suitability models showed, road surroundings are frequently characterized by low suitability, probably because less favourable habitats (i.e. farmland) and human settlements and activities surround roads. Finally, visibility of the nearest road had a very small effect on the

models. To our knowledge, this parameter has not been taken into account in other studies to determine avoidance from a bear's point of view, although it has been considered from a human perspective in the analysis of traffic mortality sites (Huber et al., 1998; Psaralexi et al., 2022). Also, visibility of the nearest road is related to the type of habitat in which the road is located. It has been reported that bears near roads preferentially use mature and dense forests during the daytime, which limits their visibility (Roever et al., 2010). Gibeau et al. (2002) and Roever et al. (2008a) observed that Canadian brown bears were closer to roads, or were more likely to cross them, if there were high-quality habitats around them. It has been suggested that closeness to roads may be related to the presence of attractive food (Huber et al., 1998; Morales-González et al., 2020; Stewart et al., 2013), especially in spring and early summer (Roever et al., 2008b), as well as during hyperphagia (Graham et al., 2010; Zarzo-Arias et al., 2018). Yet, as roads increase mortality rates (Bourbonnais et al., 2014; McLellan, 2015), vehicle networks represent

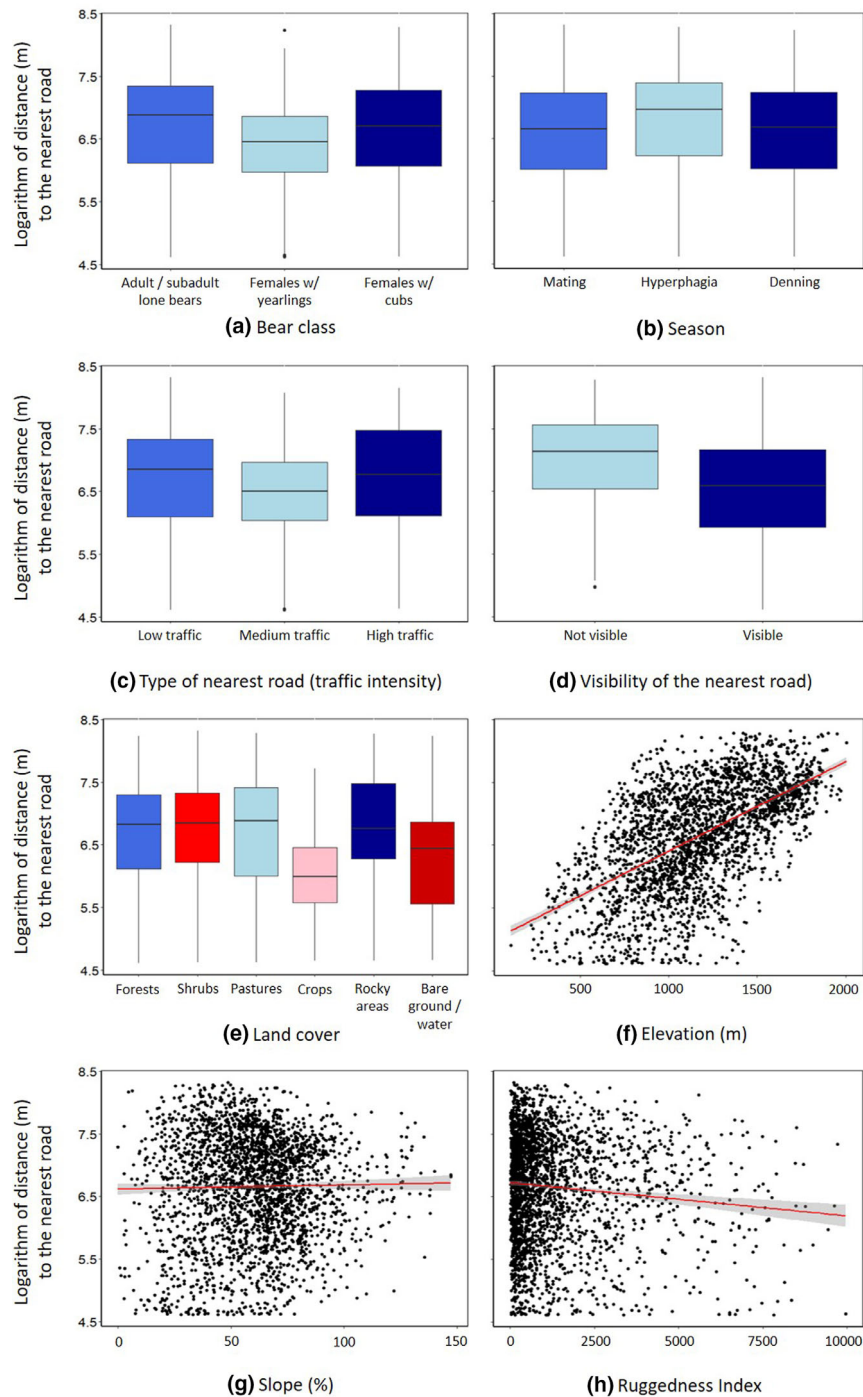


Figure 2 Effect of the different variables included in the linear models on the distance of bear locations to the nearest road (a-h). The logarithm of the distance to the nearest road is represented instead of the distance itself, in the same way that the models were built. Traffic intensity: 'low traffic' = 0–337 vehicles per day; 'medium traffic' = 338–1411 v/d; 'high traffic' = 1412–5129 v/d.

sink-like areas (Braid & Nielsen, 2015; Falcucci *et al.*, 2009) or ecological/evolutionary traps (Ciarniello *et al.*, 2007; Penteciani *et al.*, 2018). This is particularly relevant since collision mortality is greater in near-road habitats with low visibility,

such as those with high vegetation cover, or in areas with greater animal mobility and poor light (Psaralexi *et al.*, 2022).

The different bear classes express little dependence in relation to distance from the nearest road, contrary to our

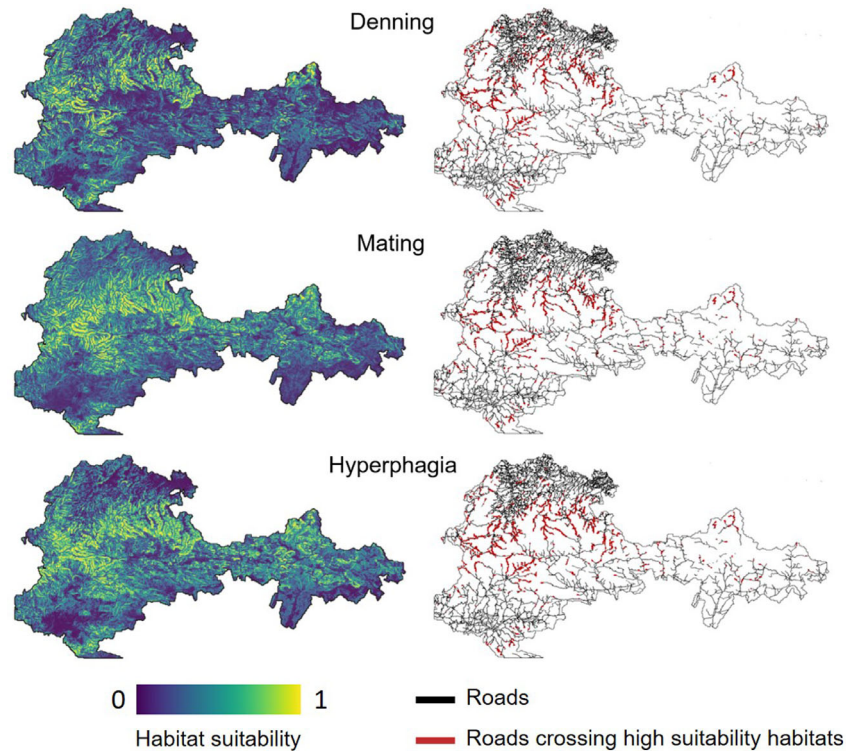


Figure 3 Maps showing continuous habitat suitability values predicted by Maxent (first column) and the average likelihood value predicted by MaxEnt of all bear classes in each season showing cells above the cloglog MaxEnt value of 0.7 (70% likelihood of bear occurrence) which intersect with a road (sections in red), and thus representing roads crossing high suitability habitats for brown bears in the Cantabrian Mountains (second column).

expectations. Brown bear sex and age classes have previously been described as showing different patterns of road avoidance and crossing, but they appear to be dependent on local features as described patterns are not consistent between studies (e.g. Chruszcz *et al.*, 2003; Gibeau *et al.*, 2002; Graham *et al.*, 2010; Proctor *et al.*, 2018; Roever *et al.*, 2008b; Steyaert *et al.*, 2016; Waller & Servheen, 2005). Actually, the lack of uniformity in sex and age responses to road networks may be due to local features of the habitats surrounding roads, which would offer different trophic resources and/or shelter throughout the year (Morales-González *et al.*, 2020). For example, females with cubs can select areas close to roads as a mechanism of adult male avoidance to prevent infanticide, which means that the relationship between certain bear classes and roads may be dependent on the local context of individual interactions (Graham *et al.*, 2010; Penteriani *et al.*, 2018, but see Waller & Servheen, 2005). However, although we expected this pattern to be repeated in the Cantabrian population, it was not the case. We suggest that females in the Cantabrian mountain range use steep and inaccessible areas as refuge from dominant males, especially in the first few weeks after exiting the winter den with cubs (Penteriani *et al.*, 2020). In these areas, it is to be expected that there are no or very few roads, so their effect would not be very noticeable. In this study, in the solitary bear class, no distinction was made between

females and males, so that some sex-related features might have been overlooked.

Considering previous studies on the effects of road networks in other brown bear populations in Europe and North America, the observed different response of the species between these two continents stands out. Roads showed a more marked negative effect in North American populations (Morales-González *et al.*, 2020; but see Güthlin *et al.* (2011) and Frączkowiak *et al.* (2014)). The historical coexistence of humans and brown bears in Europe, contrasts with the shorter and more intense interaction experienced by North American populations, where widespread human presence and activities are much more recent (Fortin *et al.*, 2016; Støen *et al.*, 2020). In Europe, human density and encroachment are also higher than in North America (Fortin *et al.*, 2016; Swenson *et al.*, 2000). Thus, different levels of exposure to human activity and persecution may have driven the observed different behavioural responses (Morales-González *et al.*, 2020; Ordiz *et al.*, 2014). Actually, in a previous study on this Cantabrian population, it was recorded that bears do not seem to modify their surveillance behaviour with respect to the distance to roads (Zarzo-Arias *et al.*, 2018). In other European populations: (a) bear occurrence was positively related to distance to roads in the Italian Central Apennines (Maiorano *et al.*, 2019); (b) lack of habitat avoidance/attraction was recorded near roads in Slovenia (Kaczensky, 2000; Kaczensky

et al., 2003); (c) habitat selection in the reintroduced population of brown bears in the Pyrenees was not affected by road density (Martin *et al.*, 2012) and (d) the proximity of roads in Romania appeared not to affect bear activity (Roellig *et al.*, 2014). Thus, our approach seems to suggest that traffic intensity does not explain distance to the nearest road in the Cantabrian Mountains, despite the expected avoidance based on traffic level that has been recorded elsewhere in Europe (Find'o *et al.*, 2019; Huber *et al.*, 1998; Kaczensky *et al.*, 2003; Skuban *et al.*, 2017). We suggest that in our study area, which is primarily mountainous and lacks large urban areas, levels of vehicle traffic might not reach the avoidance threshold that makes bears sensitive to road presence.

In contrast, in North America (mainly British Columbia and Alberta in Canada and Alaska and Montana in the United States), greater avoidance of the area adjacent to roads has been reported (Ciarniello *et al.*, 2007; McLellan, 1989; Waller & Servheen, 2005). This negative selection of habitats near roads has been described as occurring irrespective of traffic (Jacobson *et al.*, 2016; McLellan & Shackleton, 1988) or as a traffic-dependent phenomenon (Chruszcz *et al.*, 2003; Gibeau *et al.*, 2002; Mace *et al.*, 1996, 1999; Northrup *et al.*, 2012; Proctor *et al.*, 2012), with low frequencies of road crossing when traffic level increases (Chruszcz *et al.*, 2003; Waller & Servheen, 2005). Faster movements and lower activity rates have also been described (Proctor *et al.*, 2012; Roever *et al.*, 2010), as well as more nocturnal behaviour (Northrup *et al.*, 2012; Waller & Servheen, 2005). These apparent differences between Europe and North America, therefore, suggest that projecting management or mitigation measures at the same spatial scales for Europe and North America might not be appropriate due to both the different sensitivity that bears on the two continents seem to exhibit to roads and the different degree of human landscape modification and encroachment.

Because discerning the role of road networks in large carnivore ecology is crucial, and particularly relevant for isolated and small populations like the Cantabrian one, we consider it important to stress here a potential limitation of our approach. This work is based on opportunistic observations and indirect evidence, which do not provide as accurate information about movement patterns and rhythms of activity around roads or potential road avoidance strategies as does telemetry. However, (a) the initial filtering of the data for reliability minimizes possible biases due to the opportunistic or non-professional collection of the data (Gantchoff *et al.*, 2022), and (b) the year-round monitoring of bears in most of their distribution range within the Cantabrian Mountains should prevent spatial and temporal biases. As an end consequence, the information presented here has the potential to (a) have crucial implications in the management of this isolated and endangered bear population, for example, mitigation measures of human infrastructure; and (b) represent a first step towards detecting potential habitat loss in bear distributions and locations where road networks may have a greater impact at a spatial level. In animal populations inhabiting territories that have been highly humanized for centuries, such as the one studied here, the scale and entanglement level of human activities in bear habitat should always be taken into account.

Acknowledgements

During this research, EG-B was financially supported by a FPU grant (FPU15-03429) from the Spanish Ministry of Science, Innovation and Universities. VP, EG-B, AMG and HRV were financially supported by the I + D + I Project PID2020-114181GB-I00 financed by the Spanish Ministry of Science and Innovation, the Agencia Estatal de Investigación (AEI) and the Fondo Europeo de Desarrollo Regional (FEDER, EU). AMG was supported by the Predoctoral Fellowship PRE2018-086102. AZA was financially supported by a Margarita Salas contract financed by the European Union-NextGenerationEU, Ministerio de Universidades y Plan de Recuperación, Transformación y Resiliencia, through the call of the Universidad de Oviedo (Asturias). The local administrations of the Junta de Castilla y León and the Principado de Asturias provided us with the long-term database on brown bear observations and the authorizations needed to work in the brown bear restricted areas of the Cantabrian Mountains. In particular, the authors thank David Cubero Bausela, Mercedes García Domínguez and María Angeles Osorio Polo of the Junta de Castilla y León, and Teresa Sánchez Corominas, Víctor Vázquez and Pedro García-Rovés of the Principado de Asturias. The authors also thank Tony Clevenger and two anonymous reviewers for their helpful comments to the manuscript.

Conflict of interest

None declared.

References

- Aben, J., Pellikka, P., & Travis, J. M. J. (2018). A call for viewshed ecology: Advancing our understanding of the ecology of information through viewshed analysis. *Methods in Ecology and Evolution*, **9**, 624–633.
- Alexander, S. M., Waters, N. M., & Paquet, P. C. (2005). Traffic volume and highway permeability for a mammalian community in the Canadian Rocky Mountains. *Canadian Geographer*, **49**, 321–331.
- Anderson, D., & Burnham, K. (2004). *Model selection and multi-model inference. A practical information-theoretic approach*. Springer-Verlag.
- Barber, J. R., Crooks, K. R., & Fristrup, K. M. (2010). The costs of chronic noise exposure for terrestrial organisms. *Trends in Ecology and Evolution*, **25**, 180–189.
- Bardos, D., Guillera-Aroita, G., & Wintle, B. (2015). Valid auto-models for spatially autocorrelated occupancy and abundance data. *Methods in Ecology and Evolution*, **6**, 1137–1149.
- Bates, D., Maechler, M., Bolker, B., & Walker, S. (2015). Fitting linear mixed-effects models using lme4. *Journal of Statistical Software*, **67**(1), 1–48. <https://doi.org/10.18637/jss.v067.i01>
- Belsley, D. A., Kuh, E., & Welsch, R. E. (2005). *Regression diagnostics: Identifying influential data and sources of collinearity*. John Wiley & Sons Ltd.

- Bivand, R., Altman, M., Anselin, L., Assunção, R., Berke, O., Bernat, A., Blanchet, G., Blankmeyer, E., Carvalho, M., Christensen, B., Chun, Y., Dormann, C., Dray, S., Gómez-Rubio, V., Gubri, M., Halbersma, R., Krainski, E., Legendre, P., Lewin-Koh, N., ... Yu, D. (2019). *spdep: Spatial Dependence: Weighting Schemes, Statistics. R package version 1.1*, 3.
- Boitani, L., Jdeidi, T., Masseti, M., Nader, I., de Smet, K., & Cuzin, F. (2010). *Ursus arctos*. The IUCN Red List of Threatened Species.
- Bourbonnais, M. L., Nelson, T. A., Cattet, M. R. L., Darimont, C. T., Stenhouse, G. B., & Janz, D. M. (2014). Environmental factors and habitat use influence body condition of individuals in a species at risk, the grizzly bear. *Conservation Physiology*, **2**, 1–14.
- Braid, A. C. R., & Nielsen, S. E. (2015). Prioritizing sites for protection and restoration for grizzly bears (*Ursus arctos*) in southwestern Alberta, Canada. *PLoS One*, **10**, 1–15.
- Chen, H. L., & Koprowski, J. L. (2019). Can we use body size and road characteristics to anticipate barrier effects of roads in mammals? A meta-analysis. *Hystrix, Italian Journal of Mammalogy*, **30**, 1–7.
- Chruszcz, B., Clevenger, A. P., Gunson, K. E., & Gibeau, M. L. (2003). Relationships among grizzly bears, highways, and habitat in the Banff-Bow Valley, Alberta, Canada. *Canadian Journal of Zoology*, **81**, 1378–1391.
- Ciarniello, L. M., Boyce, M. S., Heard, D. C., & Seip, D. R. (2007). Components of Grizzly bear habitat selection: Density, habitats, roads, and mortality risk. *Journal of Wildlife Management*, **71**, 1446–1457.
- Ciucci, P., Boitani, L., Falco, M., & Maiorano, L. (2018). Hierarchical, multi-grain rendezvous site selection by wolves in southern Italy. *Journal of Wildlife Management*, **82**, 1049–1061.
- Coffin, A. (2007). From roadkill to road ecology : A review of the ecological effects of roads. *Journal of Transport Geography*, **15**, 396–406.
- Colchero, F., Conde, D. A., Manterola, C., Chávez, C., Rivera, A., & Ceballos, G. (2011). Jaguars on the move: modeling movement to mitigate fragmentation from road expansion in the Mayan Forest. *Animal Conservation*, **14**, 158–166.
- Davies, A., Tambling, C., Kerley, G., & Asner, G. (2016). Effects of Vegetation Structure on the Location of Lion Kill Sites in African Thicket. *PLoS One*, **11**, e0149098.
- Dennehy, E., Llana, L., & López-Bao, J. V. (2021). Contrasting wolf responses to different paved roads and traffic volume levels. *Biodiversity and Conservation*, **30**, 3133–3150.
- Elfström, M., Swenson, J. E., & Ball, J. P. (2008). Selection of denning habitats by Scandinavian brown bears *Ursus arctos*. *Wildlife Biology*, **14**, 176–187.
- Epps, C. W., & Keyghobadi, N. (2015). Landscape genetics in a changing world: Disentangling historical and contemporary influences and inferring change. *Molecular Ecology*, **24**, 6021–6040.
- Fahrig, L., & Rytwinski, T. (2009). Effects of roads on animal abundance: An empirical review and synthesis. *Ecology and Society*, **14**(1), 21.
- Falcucci, A., Ciucci, P., Maiorano, L., Gentile, L., & Boitani, L. (2009). Assessing habitat quality for conservation using an integrated occurrence-mortality model. *Journal of Applied Ecology*, **46**, 600–609.
- Find'ò, S., Skuban, M., Kajba, M., Chalmers, J., & Kalaš, M. (2019). Identifying attributes associated with brown bear (*Ursus arctos*) road-crossing and roadkill sites. *Canadian Journal of Zoology*, **97**, 156–164.
- Forman, R. T. T., Sperling, D., Bissonette, J. A., Clevenger, A. P., Cutshall, C. D., Dale, V. H., Fahrig, L., France, R., Goldman, C. R., Heanue, K., Jones, J. A., Swanson, F. J., Turrentine, T., & Winter, T. C. (2003). *Road ecology: Science and solutions*. Island Press.
- Fortin, J. K., Rode, K. D., Hilderbrand, G. V., Wilder, J., Farley, S., Jorgensen, C., & Marcot, B. G. (2016). Impacts of human recreation on brown bears (*Ursus arctos*): A review and new management tool. *PLoS One*, **11**, 1–26.
- Frąckowiak, W., Theuerkauf, J., Pirga, B., & Gula, R. (2014). Brown bear habitat selection in relation to anthropogenic structures in the Bieszczady Mountains, Poland. *Biologia*, **69**, 926–930.
- Frid, A., & Dill, L. (2002). Human-caused disturbance stimuli as a form of predation risk. *Ecology and Society*, **6**, 6.
- Gantchoff, M. G., Beyer, D., & Belant, J. L. (2019). Reproductive class influences risk tolerance during denning and spring for American black bears (*Ursus americanus*). *Ecosphere*, **10**, 1–12.
- Gantchoff, M. G., Conlee, L., & Belant, J. L. (2022). The effectiveness of opportunistic public reports versus professional data to estimate large carnivore distribution. *Ecosphere*, **13**, 1–13.
- García de Celis, A. J., Guerra Velasco, J. C., & Martínez Fernández, L. C. (2004). Los abedulares de la Omaña Alta (León): Notas sobre dinámica vegetal y cambios en el aprovechamiento de los montes. *Boletín de la A.G.E.*, **38**, 245–258.
- Gibeau, M. L., Clevenger, A. P., Herrero, S., & Wierzchowski, J. (2002). Grizzly bear response to human development and activities in the Bow River Watershed, Alberta, Canada. *Biological Conservation*, **103**, 227–236.
- Goldstein, M. I., Poe, A. J., Suring, L. H., Nielson, R. M., & McDonald, T. L. (2010). Brown bear den habitat and winter recreation in South-Central Alaska. *Journal of Wildlife Management*, **74**, 35–42.
- Gonzalez, E. G., Blanco, J. C., Ballesteros, F., Alcaraz, L., Palomero, G., & Doadrio, I. (2016). Genetic and demographic recovery of an isolated population of brown bear *Ursus arctos* L., 1758. *PeerJ*, **4**, 1–25.
- González-Bernardo, E., Bagnasco, C., Bombieri, G., Zarzo-Arias, A., Ruiz-Villar, H., Morales-González, A., Lamamy, C., Ordiz, A., Cañedo, D., Díaz, J., Chamberlain, D. E., & Penteriani, V. (2021). Rubbing behavior of European brown bears: Factors

- affecting rub tree selectivity and density. *Journal of Mammalogy*, **102**, 468–480.
- González-Bernardo, E., Bombieri, G., Del Mar Delgado, M., & Penteriani, V. (2020). The role of spring temperatures in the den exit of female brown bears with cubs in southwestern Europe. *Ursus*, **2020a**, 1–11.
- González-Bernardo, E., Russo, L. F., Valderrábano, E., Fernández, Á., & Penteriani, V. (2020). Denning in brown bears. *Ecology and Evolution*, **10**, 6844–6862.
- Graham, K., Boulanger, J., Duval, J., & Stenhouse, G. (2010). Spatial and temporal use of roads by grizzly bears in west-central Alberta. *Ursus*, **21**, 43–56.
- Grant, J., Hopcraft, C., Sinclair, A. R. E., & Packer, C. (2005). Planning for success: Serengeti lions seek prey accessibility rather than abundance. *Journal of Animal Ecology*, **74**, 559–566.
- Güthlin, D., Knauer, F., Kneib, T., Küchenhoff, H., Kaczensky, P., Rauer, G., Jonozovič, M., Mustoni, A., & Jerina, K. (2011). Estimating habitat suitability and potential population size for brown bears in the Eastern Alps. *Biological Conservation*, **144**, 1733–1741.
- Hijmans, R. J., Phillips, S., Leathwick, J. R., & Elith, J. (2017). Package “dismo”. *Circles*, **9**, 1–68.
- Hill, J. E., De Vault, T. L., & Belant, J. L. (2021). A review of ecological factors promoting road use by mammals. *Mammal Review*, **51**, 214–227.
- Holderegger, R., & Di Giulio, M. (2010). The genetic effects of roads: A review of empirical evidence. *Basic and Applied Ecology*, **11**, 522–531.
- Houston, A. I., Prosser, E., & Sans, E. (2012). The cost of disturbance: A waste of time and energy? *Oikos*, **121**, 597–604.
- Huber, D., Kusak, J., & Frkovic, A. (1998). Traffic kills of brown bears in Gorski kotar, Croatia. *Ursus*, **10**, 167–171.
- Jacobson, S. L., Bliss-Ketchum, L. L., De Rivera, C. E., & Smith, W. P. (2016). A behavior-based framework for assessing barrier effects to wildlife from vehicle traffic volume. *Ecosphere*, **7**, 1–15.
- Jenks, G. (1967). The data model concept in statistical mapping. In *International yearbook of cartography, volume 7* (pp. 186–190). Vertelsmans Verlag.
- Kaczensky, P. (2000). *Co-existence of brown bears and men in the cultural landscape of Slovenia*.
- Kaczensky, P., Knauer, F., Krze, B., Jonozovic, M., Adamic, M., & Gossow, H. (2003). The impact of high speed, high volume traffic axes on brown bears in Slovenia. *Biological Conservation*, **111**, 191–204.
- Kautz, T. M., Fowler, N. L., Petroelje, T. R., Beyer, D. E., Svoboda, N. J., & Belant, J. L. (2021). Large carnivore response to human road use suggests a landscape of coexistence. *Global Ecology and Conservation*, **30**, e01772.
- Kerley, L., Goodrich, J. M., Miquelle, D. G., Smirnov, E. N., Quigley, H. B., & Hornocker, M. G. (2002). Effects of roads and human disturbance on Amur tigers. *Conservation Biology*, **16**, 97–108.
- Kite, R., Nelson, T., Stenhouse, G., & Darimont, C. (2016). A movement-driven approach to quantifying grizzly bear (*Ursus arctos*) near-road movement patterns in west-central Alberta, Canada. *Biological Conservation*, **195**, 24–32.
- Koreň, M., Find’o, S., Skuban, M., & Kajba, M. (2011). Habitat suitability modelling from non-point data: The case study of brown bear habitat in Slovakia. *Ecological Informatics*, **6**, 296–302.
- Lagner, O., Klouček, T., & Šimová, P. (2018). Impact of input data (in)accuracy on overestimation of visible area in digital viewshed models. *PeerJ*, **6**, e4835.
- Lamamy, C., Bombieri, G., Zarzo-Arias, A., González-Bernardo, E., & Penteriani, V. (2019). Can landscape characteristics help explain the different trends of Cantabrian brown bear subpopulations? *Mammal Research*, **64**, 559–567.
- Lamb, C. T., Mowat, G., Reid, A., Smit, L., Proctor, M., McLellan, B. N., Nielsen, S. E., & Boutin, S. (2018). Effects of habitat quality and access management on the density of a recovering grizzly bear population. *Journal of Applied Ecology*, **55**, 1406–1417.
- Lorite, S., Ojeda, J. C., Rodríguez-Cuenca, B., González, E., & Muñoz, P. (2015). *Procesado y distribución de nubes de puntos en el proyecto PNOA-LiDAR*.
- Lyons, A. L., Gaines, W. L., Singleton, P. H., Kasworm, W. F., Proctor, M. F., & Begley, J. (2018). Spatially explicit carrying capacity estimates to inform species specific recovery objectives: Grizzly bear (*Ursus arctos*) recovery in the North Cascades. *Biological Conservation*, **222**, 21–32.
- Mace, R. D., Waller, J. S., Manley, T. L., Ake, K., & Wittinger, W. T. (1999). Landscape evaluation of grizzly bear habitat in western Montana. *Conservation Biology*, **13**, 367–377.
- Mace, R. D., Waller, J. S., Manley, T. L., Lyon, L. J., & Zuuring, H. (1996). Relationships among grizzly bears, roads and habitat in the Swan Mountains, Montana. *Journal of Applied Ecology*, **33**, 1395–1404.
- Maiorano, L., Chiaverini, L., Falco, M., & Ciucci, P. (2019). Combining multi-state species distribution models, mortality estimates, and landscape connectivity to model potential species distribution for endangered species in human dominated landscapes. *Biological Conservation*, **237**, 19–27.
- Martin, J., Revilla, E., Quenette, P. Y., Naves, J., Allainé, D., & Swenson, J. E. (2012). Brown bear habitat suitability in the Pyrenees: Transferability across sites and linking scales to make the most of scarce data. *Journal of Applied Ecology*, **49**, 621–631.
- Mateo-Sánchez, M. C., Gastón, A., Ciudad, C., García-Viñas, J. I., Cuevas, J., López-Leiva, C., Fernández-Landa, A., Algeet-Abarquero, N., Marchamalo, M., Fortin, M. J., & Saura, S. (2016). Seasonal and temporal changes in species use of the landscape: How do they impact the inferences from multi-scale habitat modeling? *Landscape Ecology*, **31**, 1261–1276.
- McLellan, B. N. (1989). Dynamics of a grizzly bear population during a period of industrial resource extraction II. Density

- and age–sex composition. *Canadian Journal of Zoology*, **67**, 1856–1860.
- McLellan, B. N. (2015). Some mechanisms underlying variation in vital rates of grizzly bears on a multiple use landscape. *Journal of Wildlife Management*, **79**, 749–765.
- McLellan, B. N., & Shackleton, D. M. (1988). Grizzly bears and resource-extraction industries: Effects of roads on behaviour, habitat use and demography. *Journal of Applied Ecology*, **25**, 451–460.
- MITECO. (2022). *Situación actual del Listado de Especies Silvestres en Régimen de Protección Especial y Catálogo Español de Especies Amenazadas*.
- Morales-González, A., Ruiz-Villar, H., Ordiz, A., & Penteriani, V. (2020). Large carnivores living alongside humans: Brown bears in human-modified landscapes. *Global Ecology and Conservation*, **22**, 1–13.
- Muscarella, R., Galante, P. J., Soley-Guardia, M., Boria, R. A., Kass, J. M., Uriarte, M., & Anderson, R. P. (2014). ENMeval: An R package for conducting spatially independent evaluations and estimating optimal model complexity for Maxent ecological niche models. *Methods in Ecology and Evolution*, **5**, 1198–1205.
- Nams, V. O., Mowat, G., & Panian, M. A. (2006). Determining the spatial scale for conservation purposes - An example with grizzly bears. *Biological Conservation*, **128**, 109–119.
- Northrup, J. M., Pitt, J., Muhly, T. B., Stenhouse, G. B., Musiani, M., & Boyce, M. S. (2012). Vehicle traffic shapes grizzly bear behaviour on a multiple-use landscape. *Journal of Applied Ecology*, **49**, 1159–1167.
- Ordiz, A., Bischof, R., & Swenson, J. E. (2013). Saving large carnivores, but losing the apex predator? *Biological Conservation*, **168**, 128–133.
- Ordiz, A., Kindberg, J., Sæbø, S., Swenson, J. E., & Støen, O. G. (2014). Brown bear circadian behavior reveals human environmental encroachment. *Biological Conservation*, **173**, 1–9.
- Ortega, M. T., & Morales, C. G. (2015). El clima de la Cordillera Cantábrica castellano-leonesa: diversidad, contrastes y cambios [The climate of the Castilian-Leonese Cantabrian Mountains: Diversity, contrasts and changes]. *Investigaciones Geográficas*, **63**, 45–67.
- Papp, C.-R., Dostál, I., Hlaváč, V., Berchi, G. M., & Romportl, D. (2022). Rapid linear transport infrastructure development in the Carpathians: A major threat to the integrity of ecological connectivity for large carnivores. *Nature Conservation*, **47**, 35–63.
- Pato, J., & Obeso, J. R. (2012). Growth and reproductive performance in bilberry (*Vaccinium myrtillus*) along an elevation gradient. *Ecoscience*, **19**, 59–68.
- Penteriani, V., Delgado, M. D. M., Krofel, M., Jerina, K., Ordiz, A., Dalerum, F., Zarzo-Arias, A., & Bombieri, G. (2018). Evolutionary and ecological traps for brown bears *Ursus arctos* in human-modified landscapes. *Mammal Review*, **48**, 180–193.
- Penteriani, V., Zarzo-Arias, A., del Mar Delgado, M., Dalerum, F., Gurarie, E., Torre, P. P., Corominas, T. S., Vázquez, V. M., García, P. V., & Ordiz, A. (2020). Female brown bears use areas with infanticide risk in a spatially confined population. *Ursus*, **31**, 1–9.
- Penteriani, V., Zarzo-Arias, A., Novo-Fernández, A., Bombieri, G., & López-Sánchez, C. A. (2019). Responses of an endangered brown bear population to climate change based on predictable food resource and shelter alterations. *Global Change Biology*, **25**, 1133–1151.
- Pérez, T., Naves, J., Vázquez, J. F., Fernández-Gil, A., Seijas, J., Albornoz, J., Revilla, E., Delibes, M., & Domínguez, A. (2014). Estimating the population size of the endangered Cantabrian brown bear through genetic sampling. *Wildlife Biology*, **20**, 300–309.
- Proctor, M. F., McLellan, B., Stenhouse, G., Mowat, G., Lamb, C. T., & Boyce, M. S. (2018). *Resource roads and Grizzly bears in British Columbia and Alberta, Canada*.
- Proctor, M. F., McLellan, B. N., Stenhouse, G. B., Mowat, G., Lamb, C. T., & Boyce, M. S. (2020). Effects of roads and motorized human access on grizzly bear populations in British Columbia and Alberta, Canada. *Ursus*, **2019**, 16.
- Proctor, M. F., Paetkau, D., McLellan, B. N., Stenhouse, G. B., Kendall, K. C., Mace, R. D., Kasworm, W. F., Servheen, C., Lausen, C. L., Gibeau, M. L., Wakkinen, W. L., Haroldson, M. A., Mowat, G., Apps, C. D., Ciarniello, L. M., Barclay, R. M. R., Boyce, M. S., Schwartz, C. C., Strobeck, C. (2012). *Population fragmentation and inter-ecosystem movements of grizzly bears in Western Canada and the Northern United States*. Wildlife Monographs:1–46.
- Psaralexi, M., Lazarina, M., Mertzanis, Y., Michaelidou, D.-E., & Sgardelis, S. (2022). Exploring 15 years of brown bear (*Ursus arctos*)-vehicle collisions in northwestern Greece. *Nature Conservation*, **47**, 105–119.
- R Core Team (2018). *R: A Language and Environment for Statistical Computing*. R Foundation for Statistical Computing. <https://www.R-project.org>.
- Richards, S. A., Whittingham, M. J., & Stephens, P. (2011). Model selection and model averaging in behavioural ecology: The utility of the IT-AIC framework. *Behavioral Ecology and Sociobiology*, **65**, 77–89.
- Riitters, K., Wickham, J., & Coulston, J. (2004). Use of road maps in national assessments of forest fragmentation in the United States. *Ecology and Society*, **9**, 13.
- Roellig, M., Dorresteijn, I., von Wehrden, H., Hartel, T., & Fischer, J. (2014). Brown bear activity in traditional wood-pastures in Southern Transylvania, Romania. *Ursus*, **25**, 43–52.
- Roever, C. L., Boyce, M. S., & Stenhouse, G. B. (2008a). Grizzly bears and forestry I: Road vegetation and placement as an attractant to grizzly bears. *Forest Ecology and Management*, **256**, 1253–1261.
- Roever, C. L., Boyce, M. S., & Stenhouse, G. B. (2008b). Grizzly bears and forestry. II: Grizzly bear habitat selection and conflicts with road placement. *Forest Ecology and Management*, **256**, 1262–1269.

- Roever, C. L., Boyce, M. S., & Stenhouse, G. B. (2010). Grizzly bear movements relative to roads: Application of step selection functions. *Ecography*, **33**, 1113–1122.
- Rytwinski, T., & Fahrig, L. (2015). The impacts of roads and traffic on terrestrial animal populations. In R. van der Ree, C. Grilo, & D. Smith (Eds.), *Handbook of road ecology* (pp. 237–246). Wiley-Blackwell.
- Sato, Y., Kamiishi, C., Tokaji, T., Mori, M., Koizumi, S., Kobayashi, K., Itoh, T., Sonohara, W., Takada, M. B., & Urata, T. (2014). Selection of rub trees by brown bears (*Ursus arctos*) in Hokkaido, Japan. *Acta Theriologica*, **59**, 129–137.
- Schowalter, T. D. (1988). Forest pest-management—a synopsis. *Northwest Environmental Journal*, **4**, 313–318.
- Shepard, D. B., Kuhns, A. R., Dreslik, M. J., & Phillips, C. A. (2008). Roads as barriers to animal movement in fragmented landscapes. *Animal Conservation*, **11**, 288–296.
- Skuban, M., Find'ó, S., Kajba, M., Koreň, M., Chamers, J., & Antal, V. (2017). Effects of roads on brown bear movements and mortality in Slovakia. *European Journal of Wildlife Research*, **63**, 1–9.
- Stewart, B. P., Nelson, T. A., Laberee, K., Nielsen, S. E., Wulder, M. A., & Stenhouse, G. (2013). Quantifying grizzly bear selection of natural and anthropogenic edges. *Journal of Wildlife Management*, **77**, 957–964.
- Steyaert, S. M. J. G., Leclerc, M., Pelletier, F., Kindberg, J., Brunberg, S., Swenson, J. E., & Zedrosser, A. (2016). Human shields mediate sexual conflict in a top predator. *Proceedings of the Royal Society B: Biological Sciences*, **283**, 20160906.
- Støen, O. G., Ordiz, A., Elfström, M., Hertel, M., Sahlén, V., Kindberg, J., & Swenson, J. E. (2020). Effects of human disturbance on brown bear behavior. In V. Penteriani & M. Melletti (Eds.), *Bears of the world: Ecology, conservation and management* (pp. 250–259). Cambridge University Press.
- Swenson, J. E., Gerstl, N., Dahle, B., & Zedrosser, A. (2000). Action plan for the conservation of the brown bear (*Ursus arctos*) in Europe. *Nature and environment*, **114**, 1–69.
- Tandy, C. R. V. (1967). The isovist method of landscape survey. In H. C. Murray (Ed.), *Methods of landscape analysis* (pp. 9–10). Landscape Research Group.
- Torres, A., Jaeger, J. A. G., & Alonso, J. C. (2016). Assessing large-scale wildlife responses to human infrastructure development. *Proceedings of the National Academy of Sciences of the United States of America*, **113**, 8472–8477.
- Trombulak, S. C., & Frissel, C. A. (2000). Review of ecological effects of roads on terrestrial and aquatic communities. *Conservation Biology*, **14**, 18–30.
- Uzal, A., Martínez-Artero, J., Ordiz, A., Zarzo-Arias, A., & Penteriani, V. (2022). Habitat characteristics around dens in female brown bears with cubs are density dependent. *Mammal Research*, **67**, 445–455.
- Waller, J. S., & Servheen, C. (2005). Effects of Transportation Infrastructure on Grizzly Bears in Northwestern Montana. *Journal of Wildlife Management*, **69**, 985–1000.
- Warren, D. L., Glor, R. E., & Turelli, M. (2008). Environmental niche equivalency versus conservatism: Quantitative approaches to niche evolution. *Evolution*, **62**, 2868–2883.
- Wasser, S. K., Keim, J. L., Taper, M. L., & Lele, S. R. (2011). The influences of wolf predation, habitat loss, and human activity on caribou and moose in the Alberta oil sands. *Frontiers in Ecology and the Environment*, **9**, 546–551.
- Watkins, R. Z., Chen, J., Pickens, J., & Brosowski, K. (2003). Effects of forest roads on understory plants in a managed hardwood landscape. *Conservation Biology*, **17**, 411–419.
- Zarzo-Arias, A., Delgado, M. M., Ordiz, A., Díaz, J. G., Cañedo, D., González, M. A., Romo, C., García, P. V., Bombieri, G., Bettega, C., Russo, L. F., Cabral, P., González, R. G., Martínez-Padilla, J., & Penteriani, V. (2018). Brown bear behaviour in human-modified landscapes: The case of the endangered Cantabrian population, NW Spain. *Global Ecology and Conservation*, **16**, e00499.
- Zarzo-Arias, A., Penteriani, V., Delgado, M. M., Peón Torre, P., García-González, R., Mateo-Sánchez, M. C., Vázquez García, P., & Dalerum, F. (2019). Identifying potential areas of expansion for the endangered brown bear (*Ursus arctos*) population in the Cantabrian Mountains (NW Spain). *PLoS One*, **14**, 1–15.
- Zarzo-Arias, A., et al. (2021). Seasonality, local resources and environmental factors influence patterns of brown bear damages: Implications for management. *Journal of Zoology*, **313**(1), 1–17.
- Zeller, K. A., Wattles, D. W., Conlee, L., & Destefano, S. (2021). Response of female black bears to a high-density road network and identification of long-term road mitigation sites. *Animal Conservation*, **24**(2), 167–180.
- Zuur, A. F., Ieno, E. N., & Elphick, C. S. (2010). A protocol for data exploration to avoid common statistical problems. *Methods in Ecology and Evolution*, **1**, 3–14.

Supporting Information

Additional Supporting Information may be found in the online version of this article:

Figure S1. Comparison of the estimates for each of the predictors in the different models to analyse the effects of the road network on the spatial distribution of brown bears (red—visual observations, blue—tracks, purple—total model). Baseline levels for categorical variables are: ‘forests’ for landcover, ‘solitary bears’ for class of bear, ‘mating’ for season, ‘Type 1’ for type of the NR and ‘not visible’ for visibility of the NR. The most important parameters are highlighted in bold. FCOY, females with cubs of the year; FWY, females with yearlings.

Figure S2. Response curves of the relationship between bear occurrence likelihood and the variable distance to the nearest road of the models for: (a) females with cubs during the denning season, (b) females with cubs during the mating season, (c) females with cubs during the hyperphagia season, (d)

females with yearlings during the denning season, (e) females with yearlings during the mating season, (f) solitary adults/subadults during the denning season, (g) solitary adults/subadults during the mating season and (h) solitary adults/subadults during the hyperphagia season. The curves show that the predicted likelihood of presence changes as each environmental variable is varied, keeping all other environmental variables at their average sample value.

Figure S3. Jackknife tests of variable importance for regularized training gain of the models for: (a) females with cubs during the denning season, (b) females with cubs during the mating season, (c) females with cubs during the hyperphagia season, (d) females with yearlings during the denning season, (e) females with yearlings during the mating season, (f) solitary adults/subadults during the denning season, (g) solitary adults/subadults during the mating season and (h) solitary adults/subadults during the hyperphagia season. Light blue bars represent the regularized training gain for each model without the variable, while dark blue bars represent the regularized training gain for each model with only this variable. The lower red bars represent the regularized training with all the variables. The environmental variable with the highest gain (biggest dark blue bar) when used in isolation contains the most useful information by itself. The environmental variable that decreases the gain the most when it is omitted (smallest light blue bar) possesses the most information that is not present in the other variables.

Table S1. Mean values of each environmental variable included in the MaxEnt models in the cells crossed by the different types of roads. Elevation values are indicated in metres, while the values of the different landcovers represent percentages.

Table S2. Description of the best model for each bear class in each season. *Indicates that there was more than one model within 2 units of Δ AIC from the best one and thus the selected model was the simplest one (fewer parameters, and if the same, a smaller number of features and regularization

multiplier). fcden, female with cubs during denning; fchyp, females with cubs during hyperphagia; Fcmat, females with cubs during mating; fyden, females with yearlings during denning; fymat, females with yearlings during mating; oden, other bears during denning; ohyp, other bears during hyperphagia; omat, other bears during mating; rm, regularization multiplier. Model features: linear (L), hinge (H), quadratic (Q), threshold (T) and product (P).

Table S3. Mean habitat suitability values predicted by the models of each bear class in each season and for all bear occurrence points. fcden, female with cubs during denning; fchyp, females with cubs during hyperphagia; Fcmat, females with cubs during mating; fyden, females with yearlings during denning; fymat, females with yearlings during mating; oden, other bears during denning; ohyp, other bears during hyperphagia; omat, other bears during mating.

Table S4. Percent contribution of each of the variables to the MaxEnt models (r: including distance to the nearest road, nr: not including this distance) for each bear class in each season. The variable distance to the nearest road is highlighted, and the model in which it contributed the most (females with yearlings in denning) is in bold type. fcden, female with cubs during denning; fchyp, females with cubs during hyperphagia; Fcmat, females with cubs during mating; fyden, females with yearlings during denning; fymat, females with yearlings during mating; oden, other bears during denning; ohyp, other bears during hyperphagia; omat, other bears during mating.

Table S5. Percentage of the number of cells crossed by a road with more than a 70% likelihood of bear occurrence (clog-log value > 0.7), and thus high habitat suitability, for each bear class in each season. fcden, female with cubs during denning; fchyp, females with cubs during hyperphagia; Fcmat, females with cubs during mating; fyden, females with yearlings during denning; fymat, females with yearlings during mating; oden, other bears during denning; ohyp, other bears during hyperphagia; omat, other bears during mating.