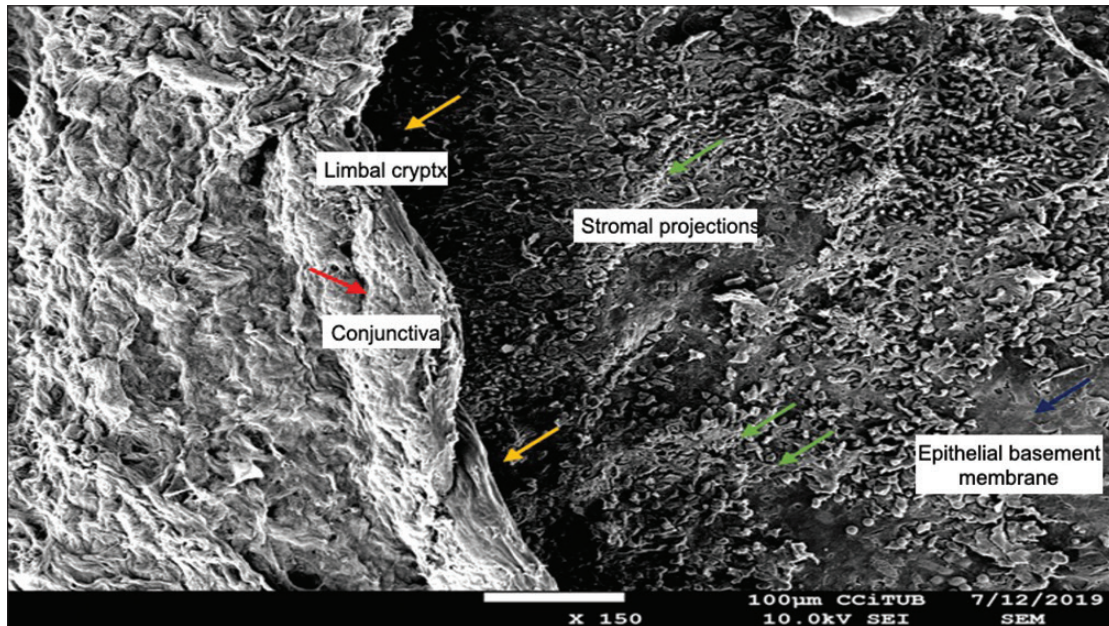


## Human corneo-conjunctival limbus anatomy assessed by scanning electron microscopy



**Figure 1:** ( $\times 150$ ): Red arrow: conjunctiva; yellow arrows: limbal cryptx; green arrows: stromal projections; blue arrow: epithelial basement membrane. Superficial stromal projections around the limbal crypts providing a niche for stem and epithelial cells. There is a transitional zone from peripheral projections to a smoother epithelial basement membrane centrally

Limbus is formed by the junction of the corneal and conjunctival epithelia, where the epithelium gradually becomes thicker toward the sclera.<sup>[1]</sup> It is a 1–2-mm-wide anatomical ring-shaped transition zone between the opaque sclera and the clear cornea.<sup>[2]</sup> Anatomically, the limbus contains important features related to eye functions including fibrovascular ridges radially oriented known as palisades of Vogt that host corneal stem cells for epithelial turnover.<sup>[1]</sup> Scanning electron microscopy (SEM) is a technique for obtaining high-resolution images of biological and nonbiological specimens.

Our aim was to show the ultrastructure of the corneal limbus using SEM [Fig. 1].<sup>[3]</sup>

### Financial support and sponsorship

Nil.

### Conflicts of interest

There are no conflicts of interest.

*Jorge Peraza Nieves, Carlos Rocha de Lossada, Noelia Sabater Cruz, Josep Torras Sanvicens*

Hospital Clinic of Barcelona, Barcelona, Spain

**Correspondence to:** Dr. Carlos Rocha de Lossada, Sabino de Arana 1, Barcelona, Spain.  
E-mail: carlosrochadelossada5@gmail.com

## References

1. Consejo A, Llorens-Quintana C, Radhakrishnan H, Iskander DR. Mean shape of the human limbus. *J Cataract Refract Surg* 2017;43:667-72.

2. Spaniol K, Witt J, Mertsch S, Borrelli M, Geerling G, Schrader S. Generation and characterisation of decellularised human corneal limbus. *Graefes Arch Clin Exp Ophthalmol* 2018;256:547-57.
3. Versura P, Bonvicini F, Caramazza R, Laschi R. Scanning electron microscopy study of human cornea and conjunctiva in normal and various pathological conditions. *Scan Electron Microsc* 1985;:1695-708.

This is an open access journal, and articles are distributed under the terms of the Creative Commons Attribution-NonCommercial-ShareAlike 4.0 License, which allows others to remix, tweak, and build upon the work non-commercially, as long as appropriate credit is given and the new creations are licensed under the identical terms.

Access this article online	
Quick Response Code:	Website: www.ijo.in
	DOI: 10.4103/ijo.IJO_2205_19

**Cite this article as:** Peraza Nieves J, Rocha de Lossada C, Sabater Cruz N, Torras Sanvicens J. Human corneo-conjunctival limbus anatomy assessed by scanning electron microscopy. *Indian J Ophthalmol* 2020;68:1665.