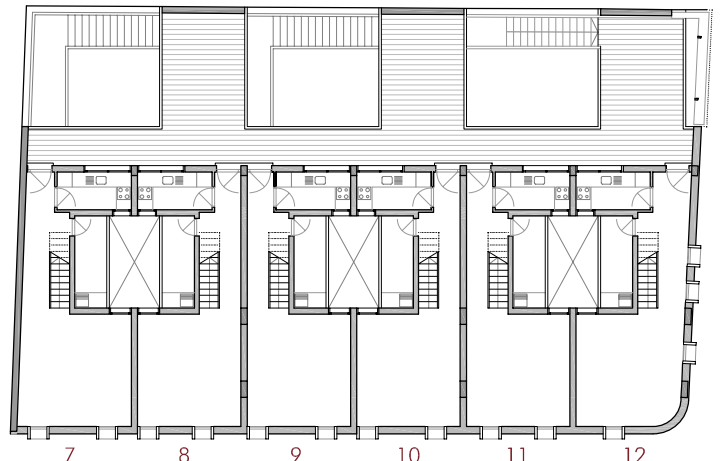
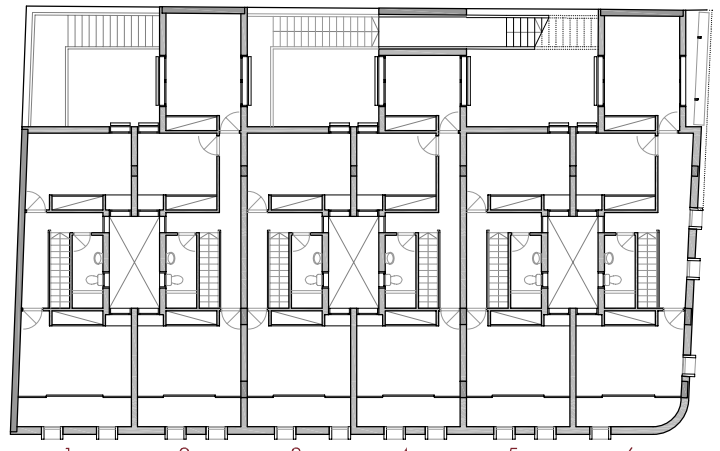


PLANTA 4ª. + 13,40



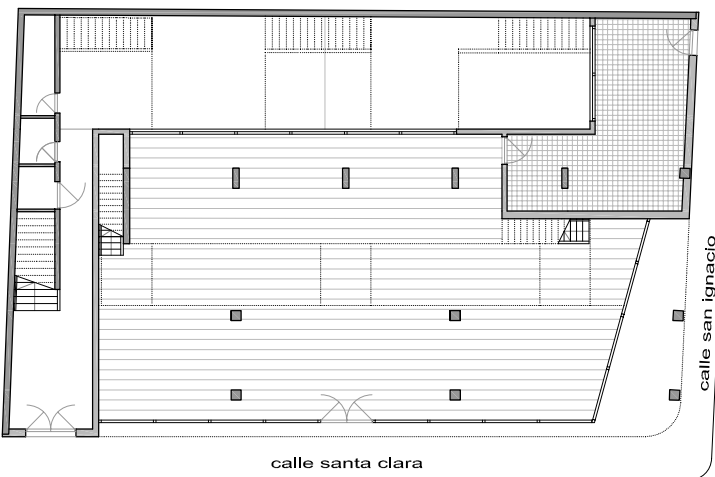
PLANTA 3ª. + 10,80



PLANTA 2ª. + 8,10

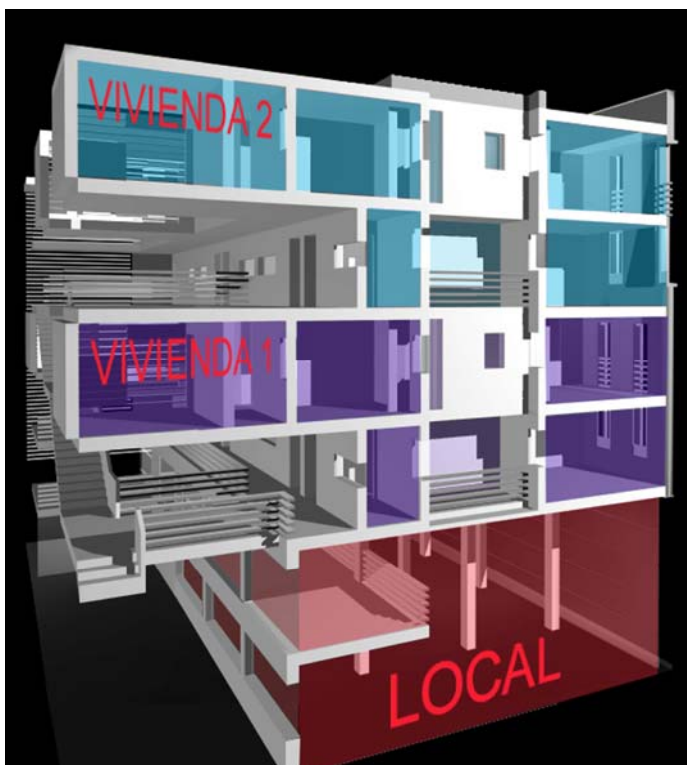


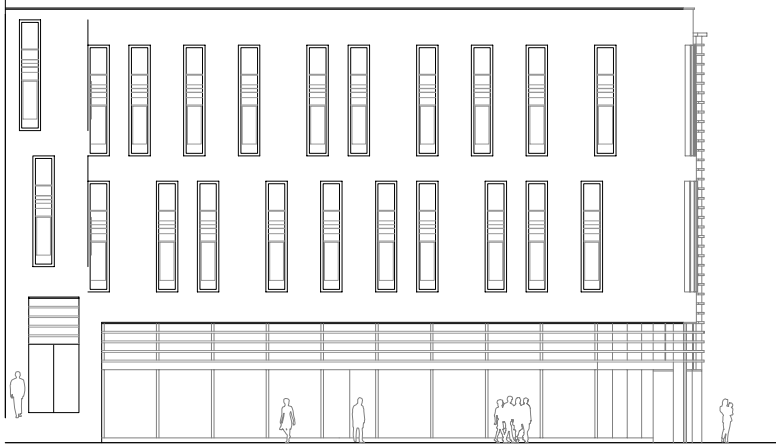
PLANTA 1ª. + 5,40



PLANTA bª. + 0,00

0 3 6 9 12 ESCALA 1:300





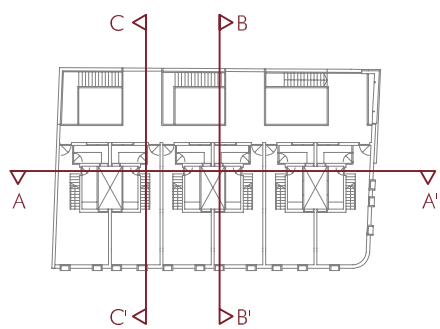
ALZADO CALLE SANTA CLARA



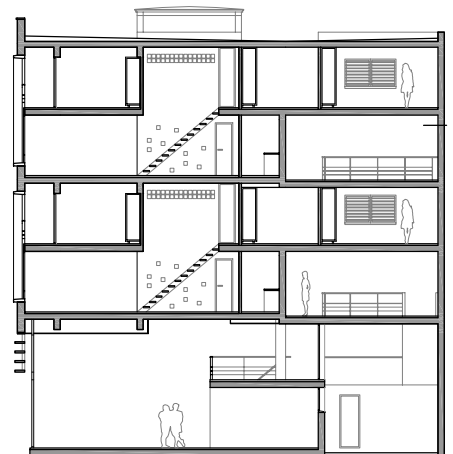
ALZADO CALLE SAN IGNACIO



SECCIÓN TRANSVERSAL A-A'



SECCIÓN TRANSVERSAL B-B'



SECCIÓN TRANSVERSAL C-C'

0 3 6 9 12 ESCALA 1:300