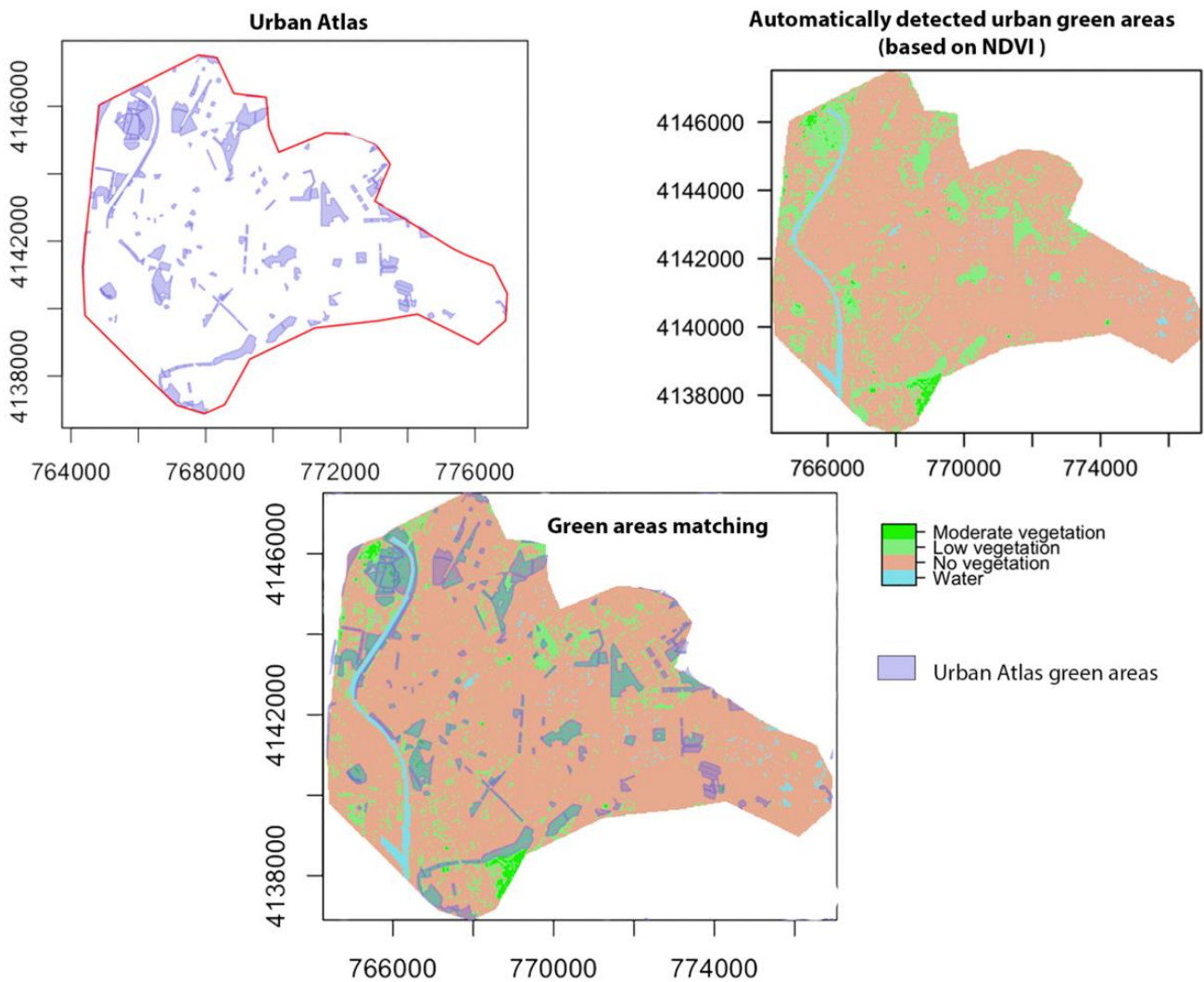


Automatic detection of unfavourable urban areas with higher temperatures and lack of green spaces using satellite imagery

## Appendix D: Validation of the vegetation maps

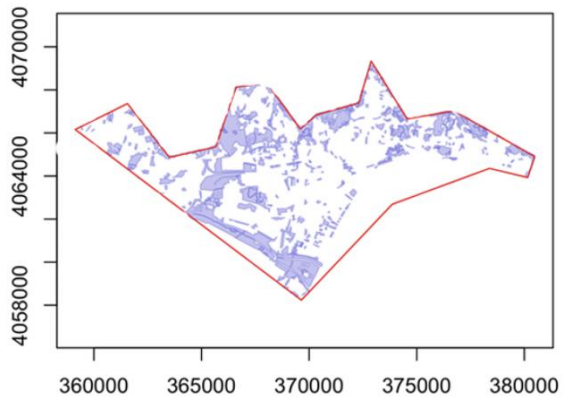
In this appendix, the maps of the spatial distribution of the vegetation derived from the Normalized Difference Vegetation Index (NDVI) are compared with the maps of Land Cover/Use classes established in the Urban Atlas of the Copernicus project for Seville and Malaga.

### SEVILLE

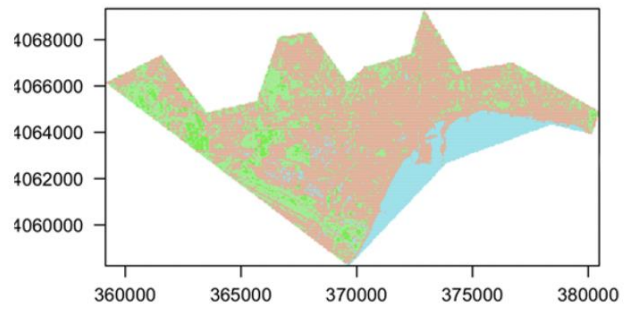


# MALAGA

## Urban Atlas



## Automatically detected urban green areas (based on NDVI)



## Green areas matching

