

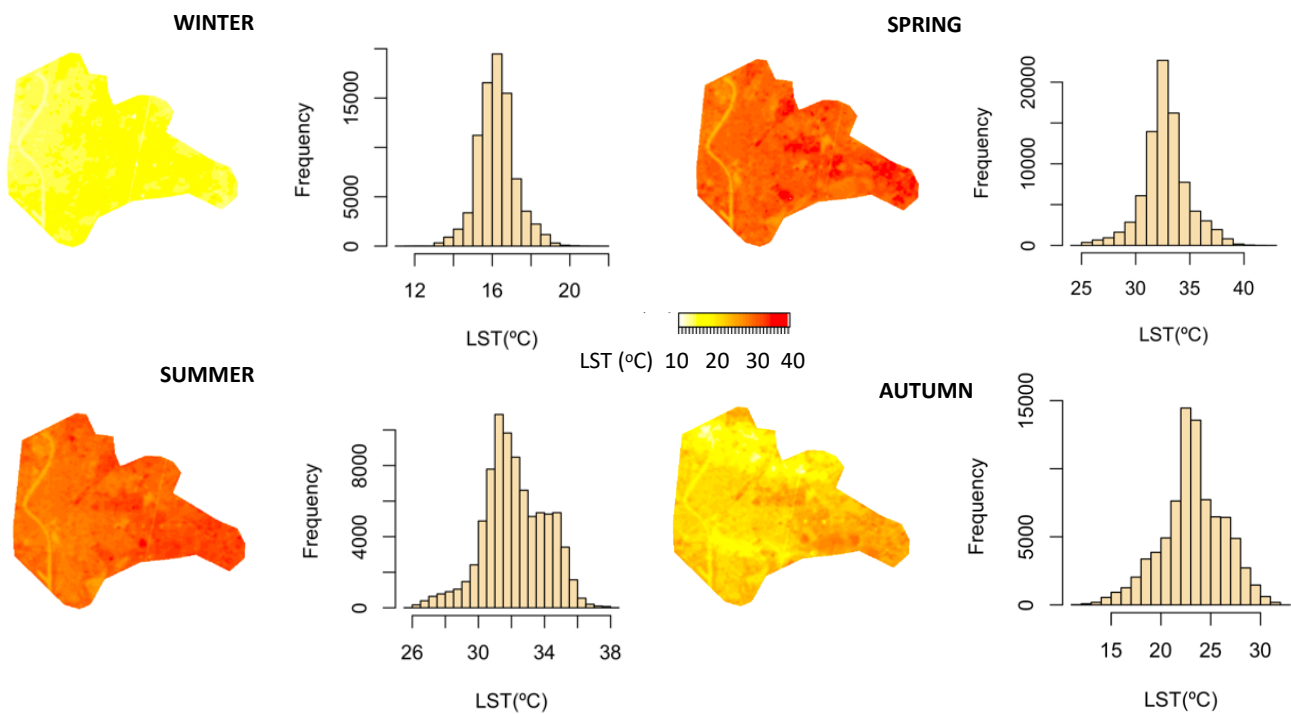
Automatic detection of unfavourable urban areas with higher temperatures and lack of green spaces using satellite imagery

Appendix C: Evolution of the results during the year

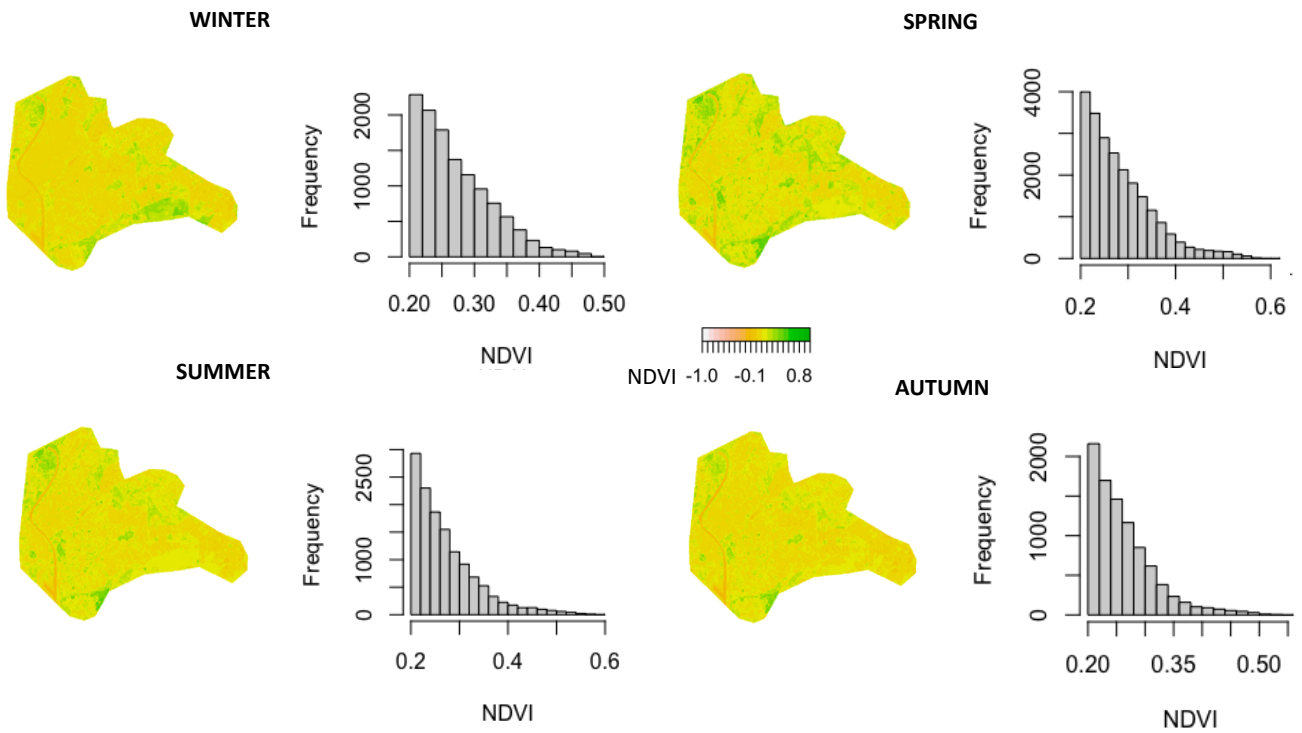
In this appendix, maps with the spatial distribution of land surface temperatures (LST), Normalized Difference Vegetation Index (NDVI), and unfavourable areas with the Disadvantaged Area Index (DAI) values are presented for Seville and Malaga to compare results in the different seasons of 2020.

SEVILLE

LST maps

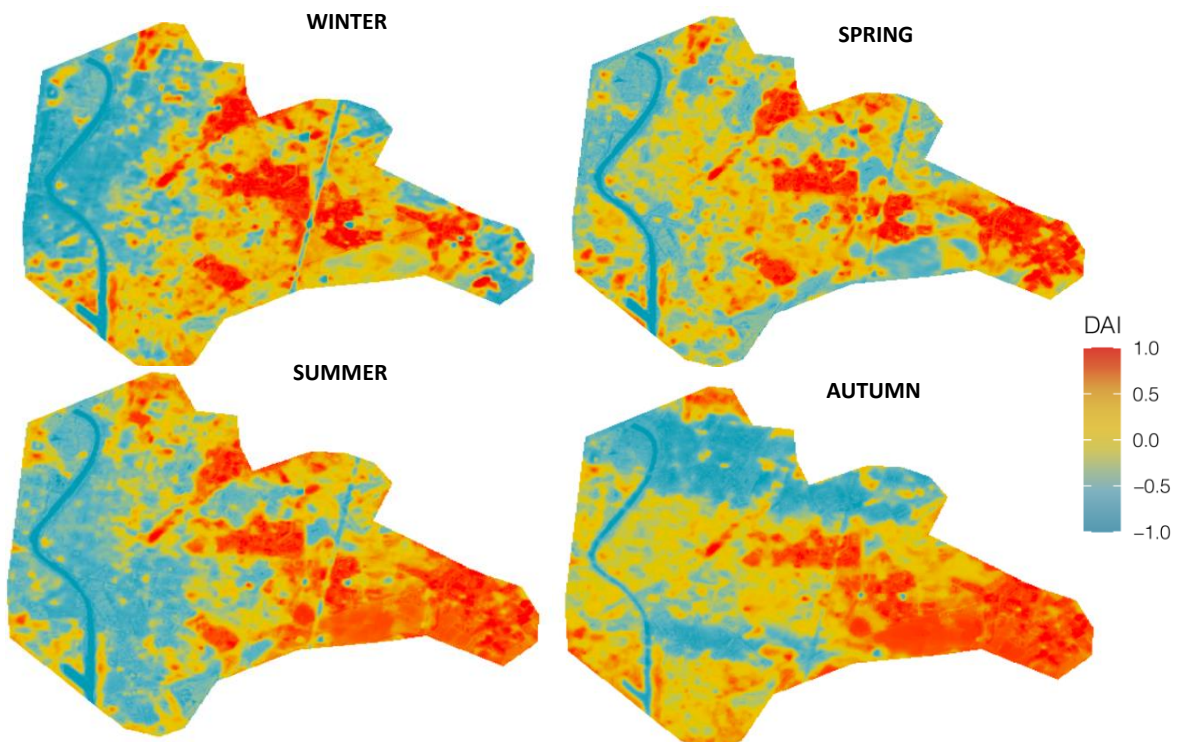


NDVI maps*

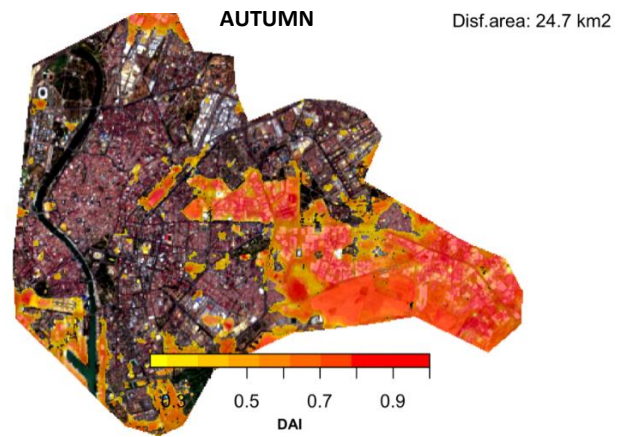
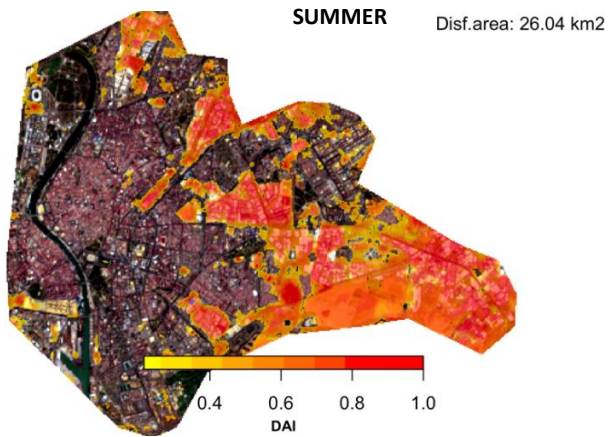
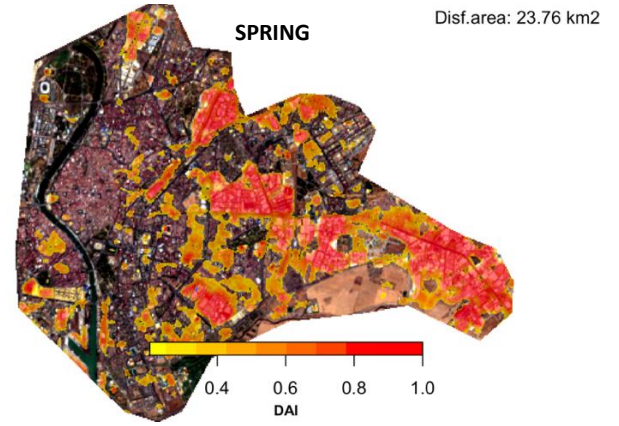
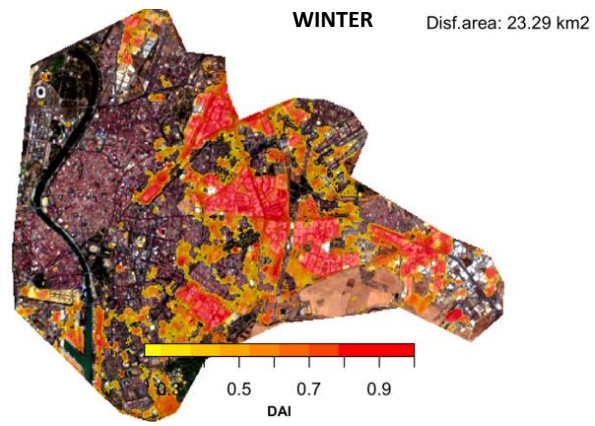


*only the frequencies of NDVI values corresponding to vegetation are shown

DAI maps



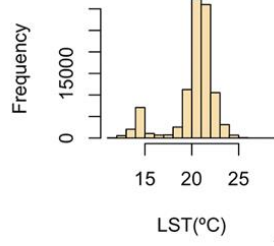
Unfavourable areas



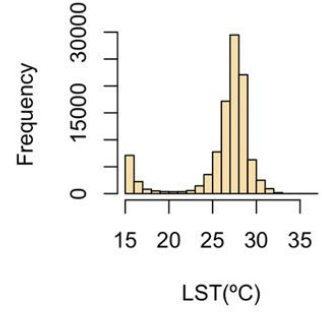
MALAGA

LST maps

WINTER



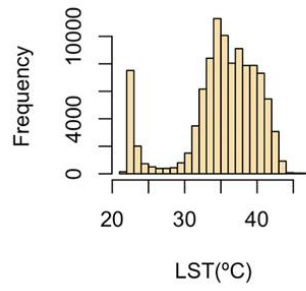
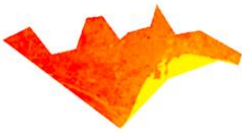
SPRING



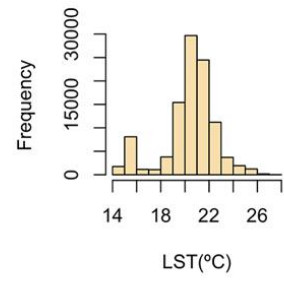
LST (°C) 10 20 30 40



SUMMER

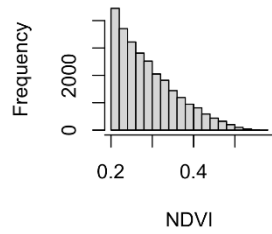
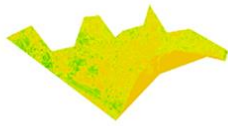


AUTUMN

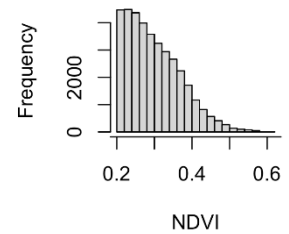
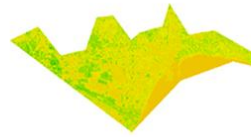


NDVI maps*

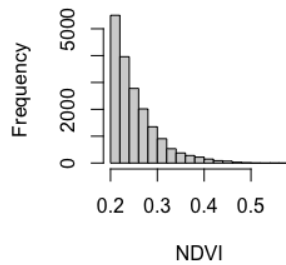
WINTER



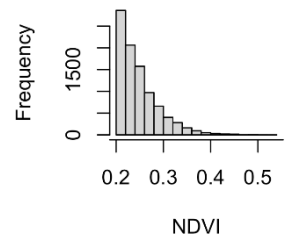
SPRING



SUMMER



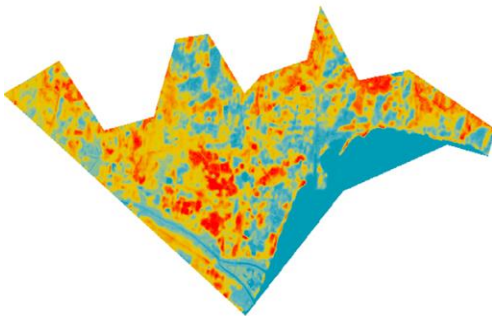
AUTUMN



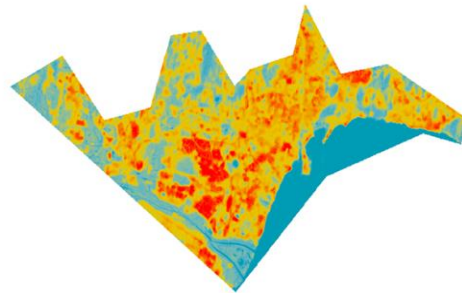
*only the frequencies of NDVI values corresponding to vegetation are shown

DAI maps

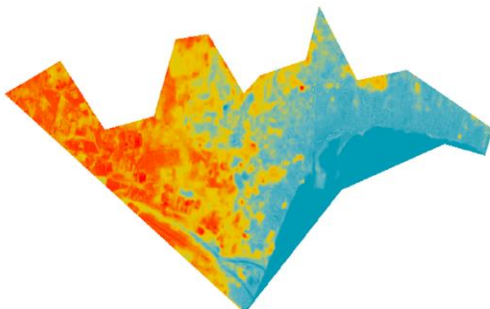
WINTER



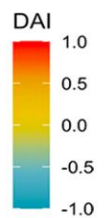
SPRING



SUMMER



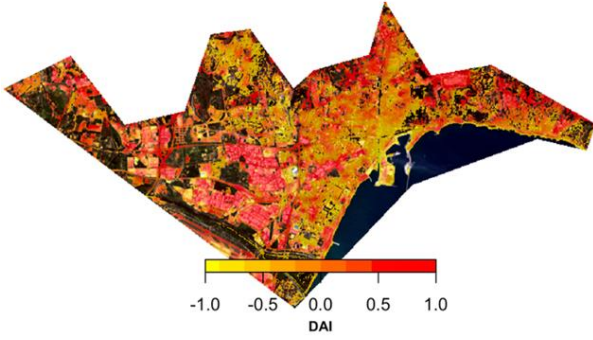
AUTUMN



Unfavourable areas

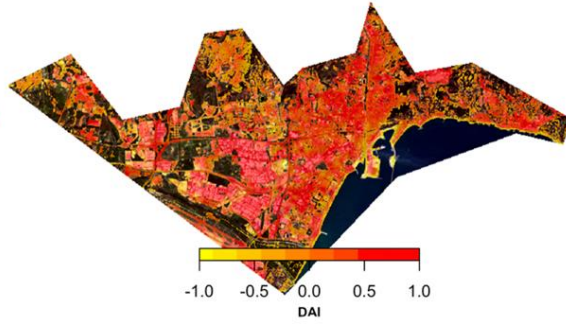
WINTER

Disf.area: 53.73 km²



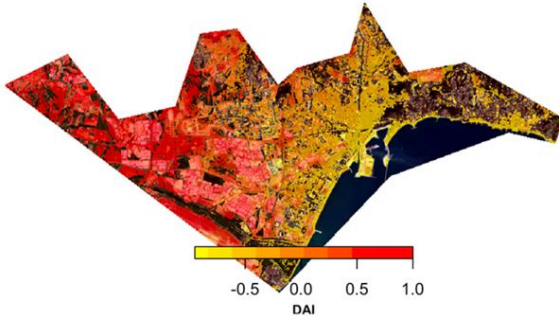
SPRING

Disf.area: 51.06 km²



SUMMER

Disf.area: 52.6 km²



AUTUMN

Disf.area: 53 km²

