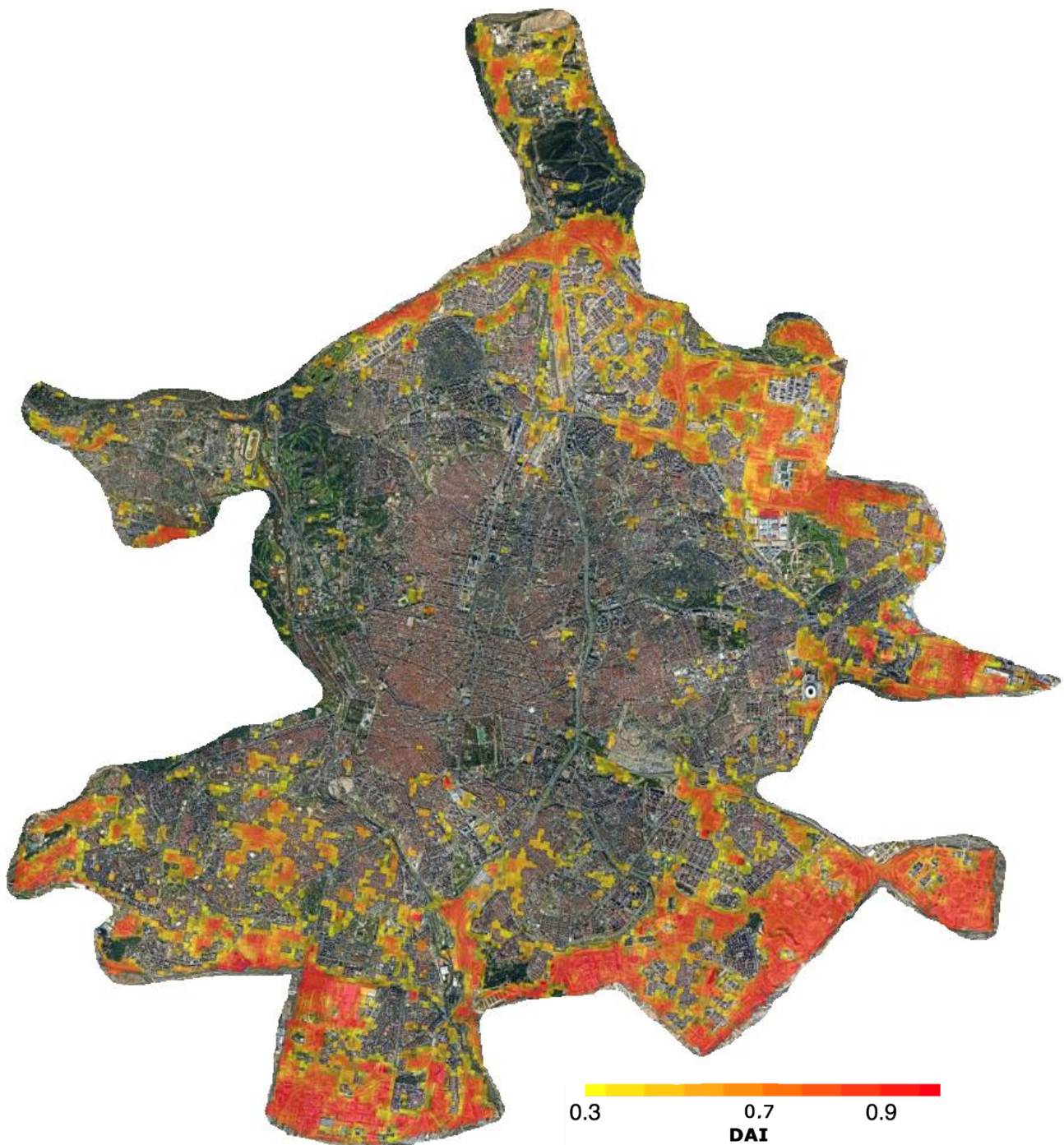


Automatic detection of unfavourable urban areas with higher temperatures and lack of green spaces using satellite imagery

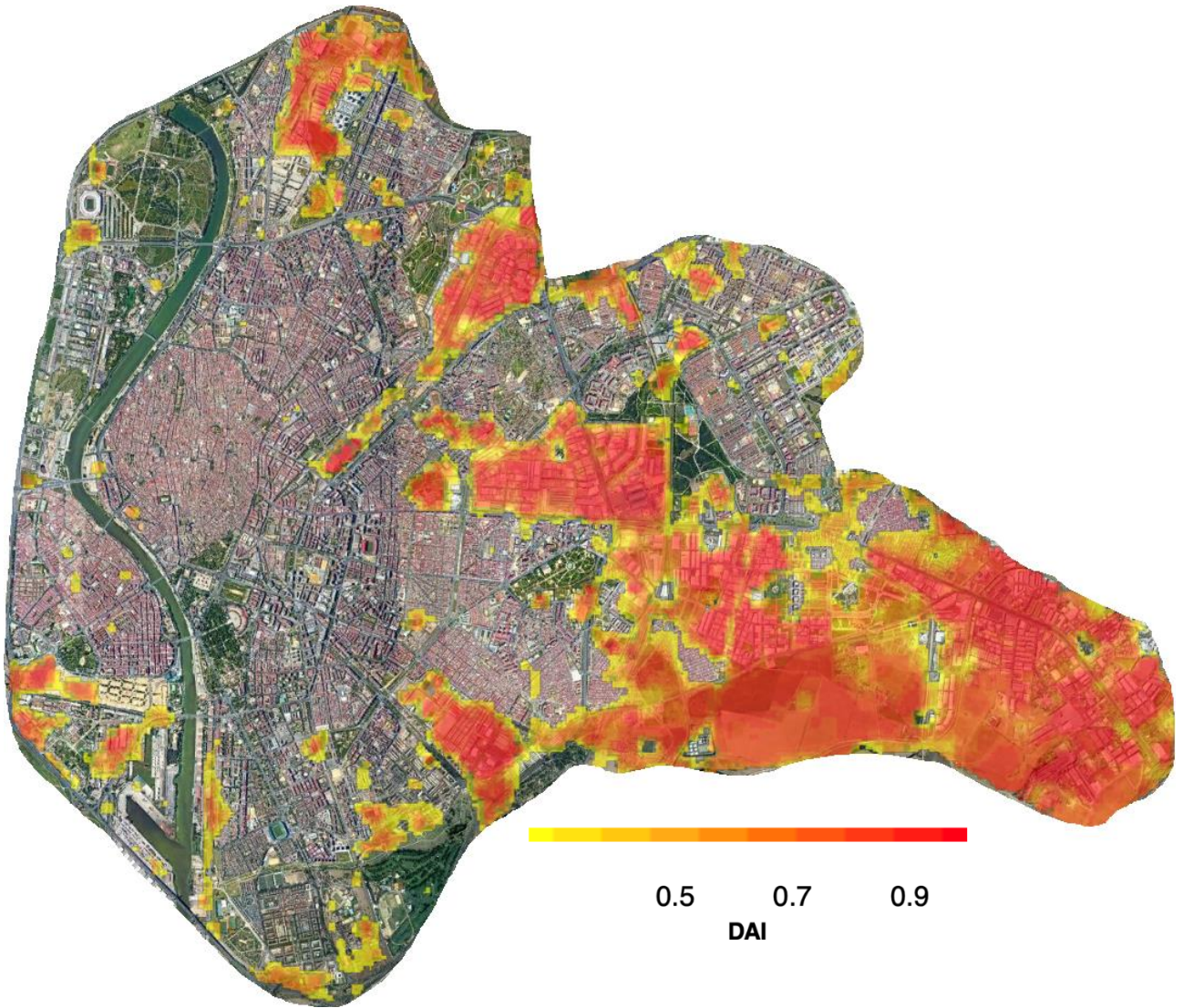
Appendix B: Maps with most unfavourable areas

In this appendix, maps with the most unfavourable areas (corresponding to those that belong to the worst cluster) are presented for each city.

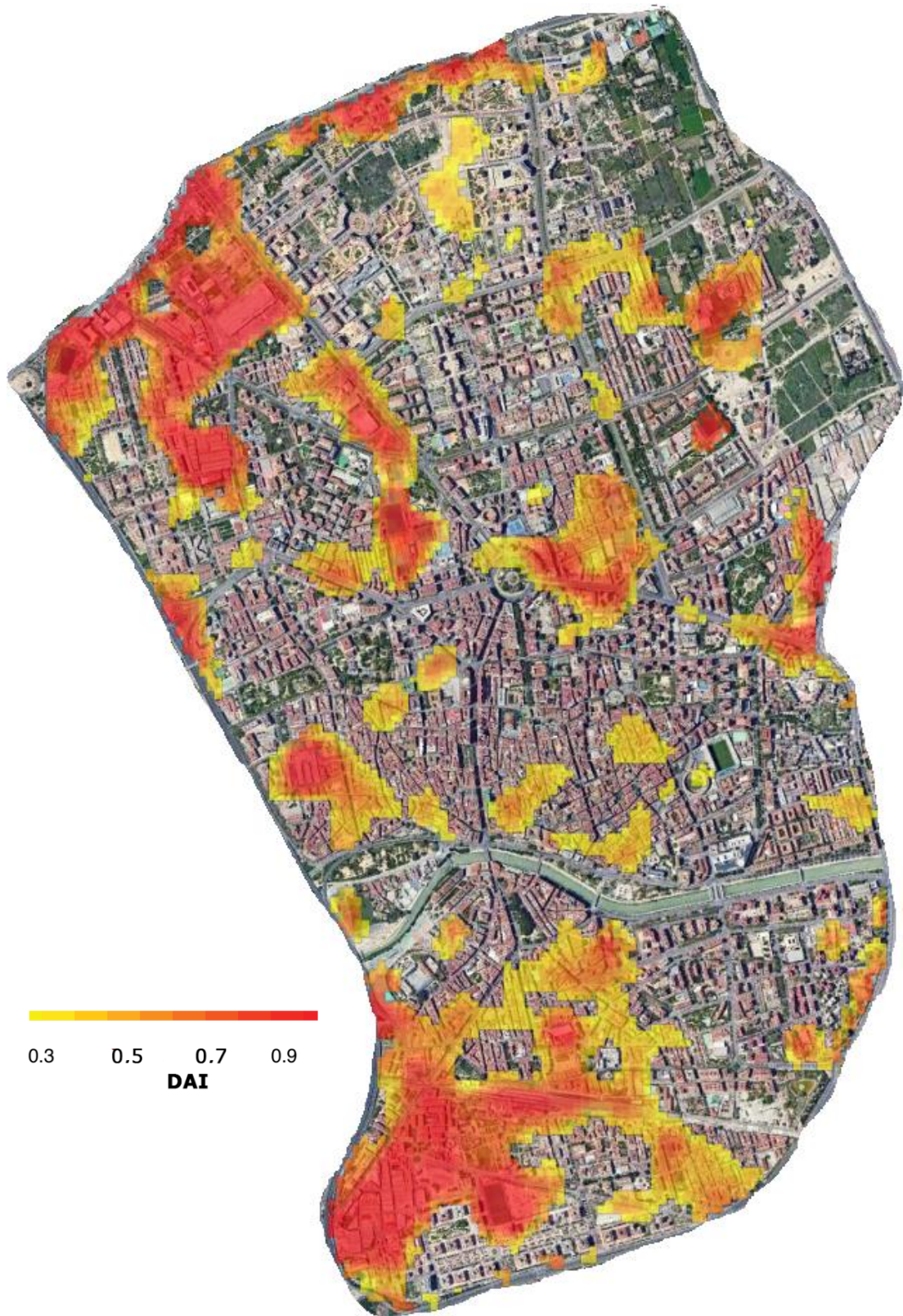
MADRID



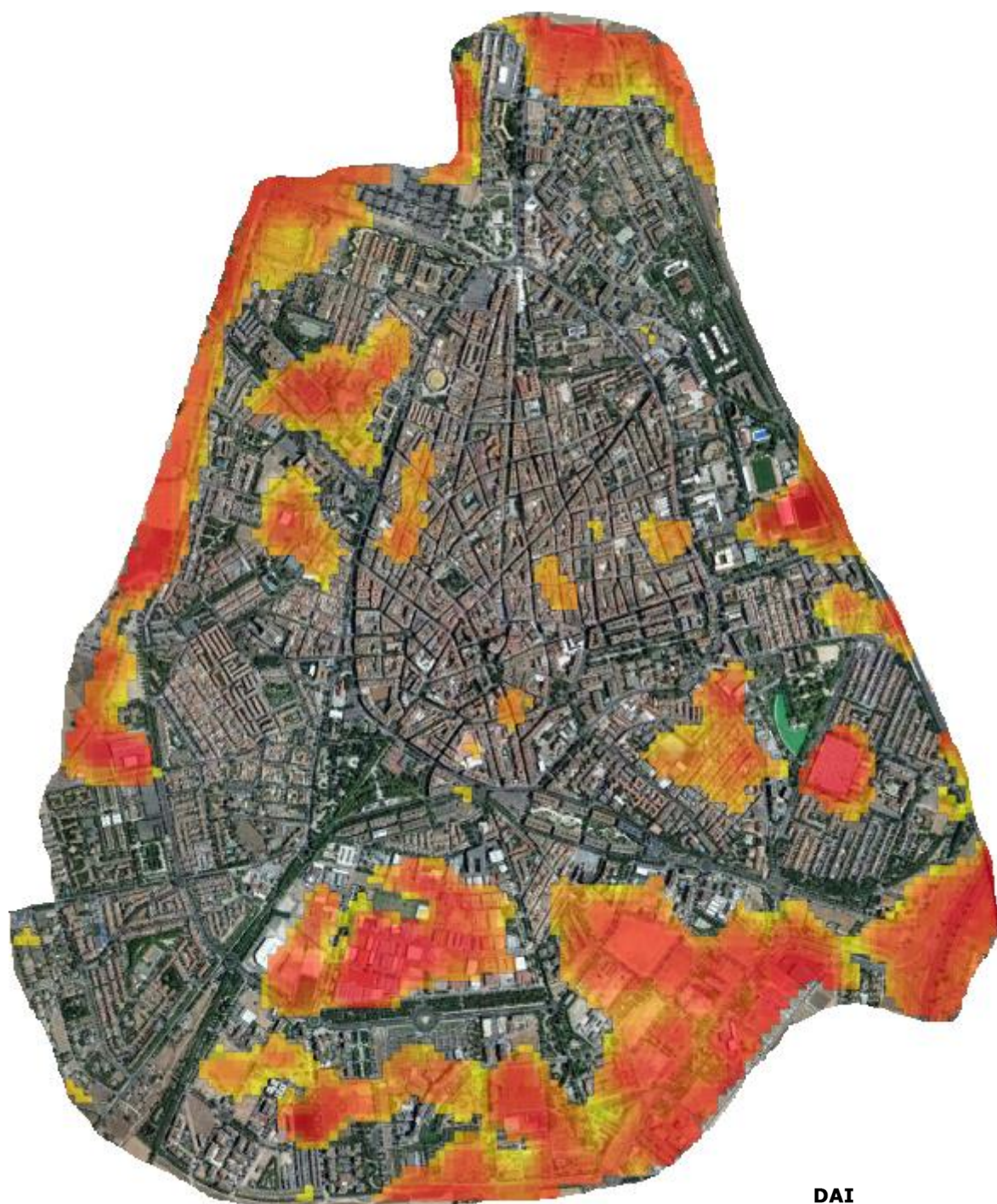
SEVILLE



MURCIA



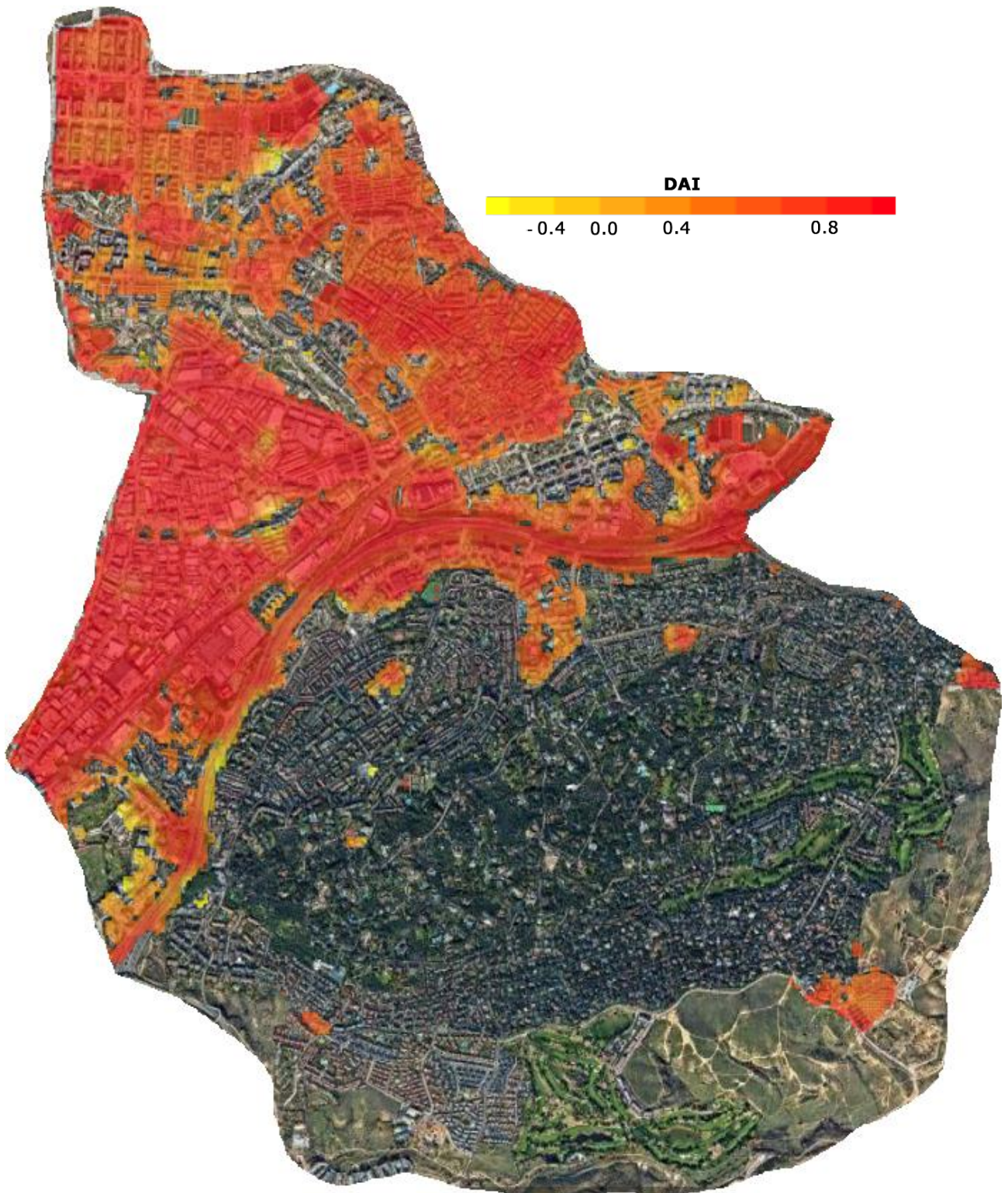
CIUDAD REAL



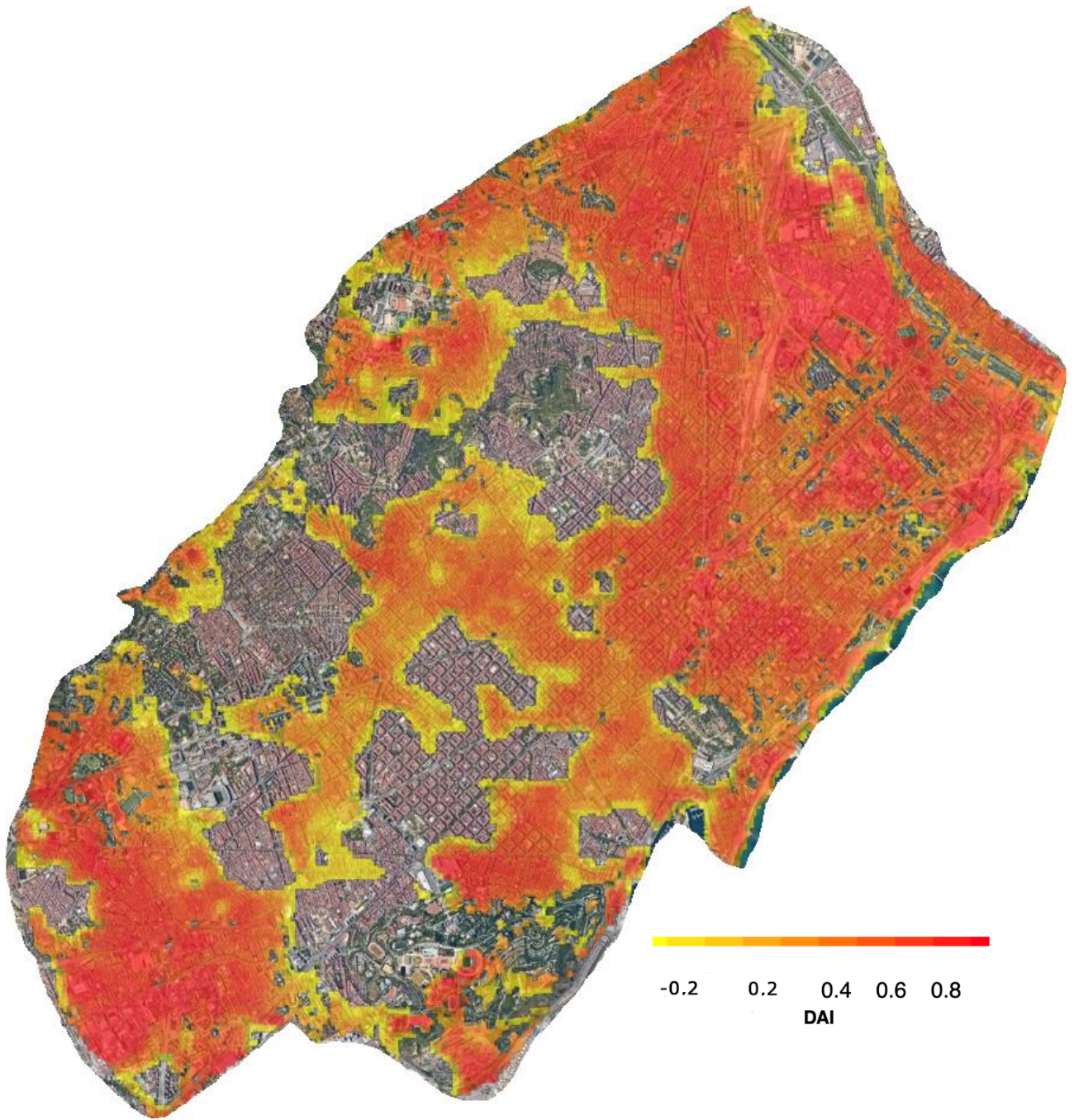
DAI



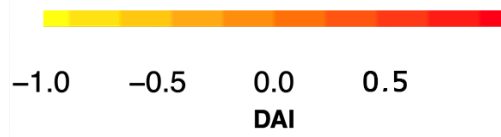
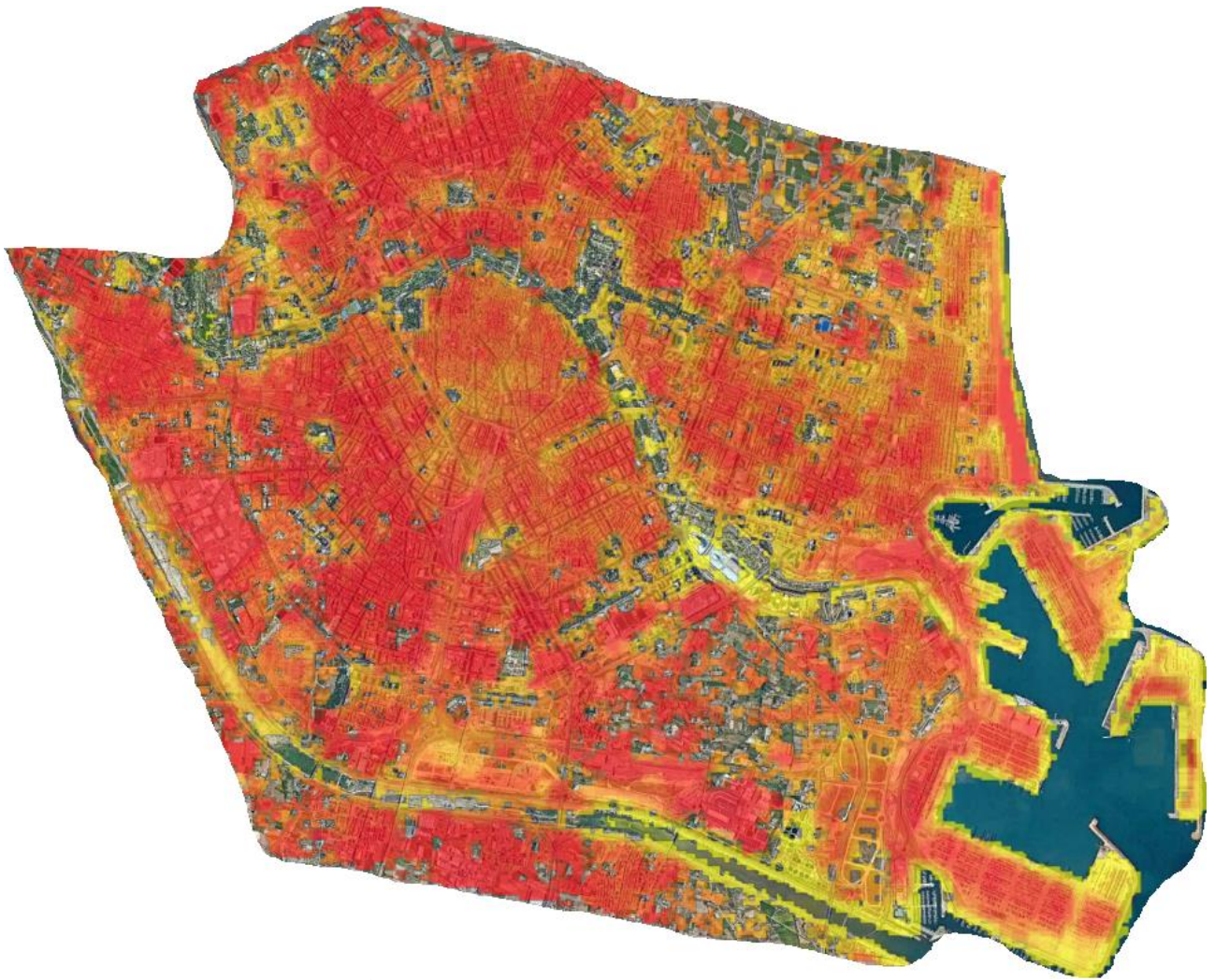
ALCOBENDAS



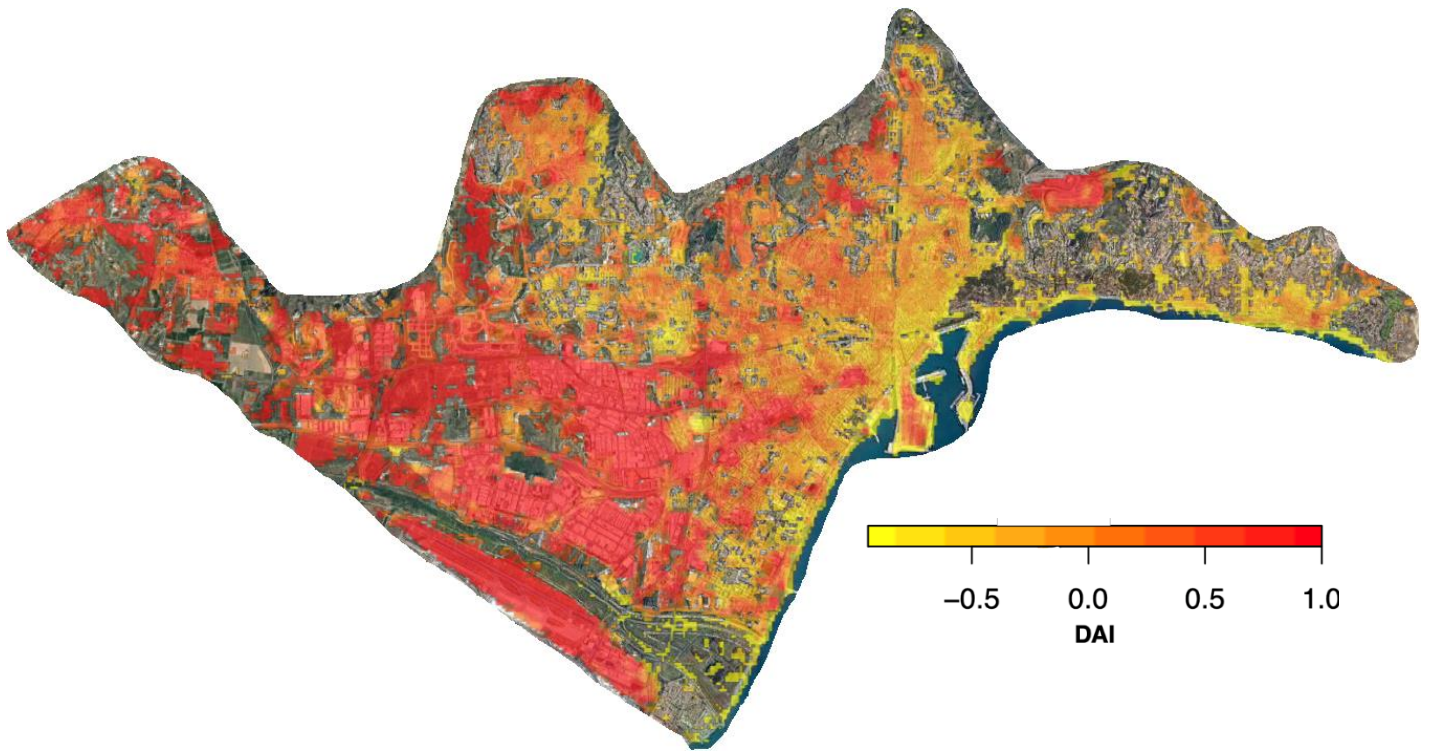
BARCELONA



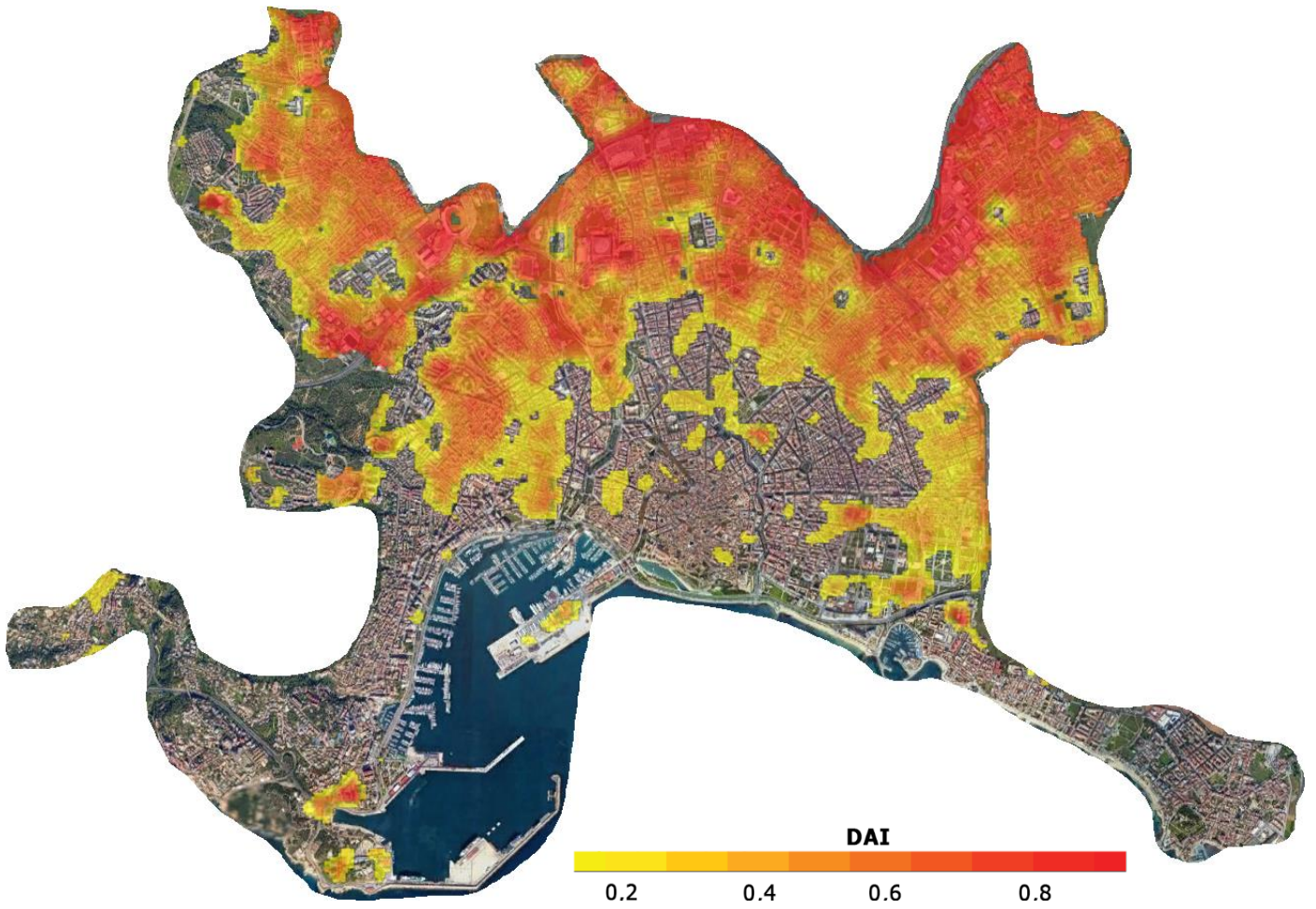
VALENCIA



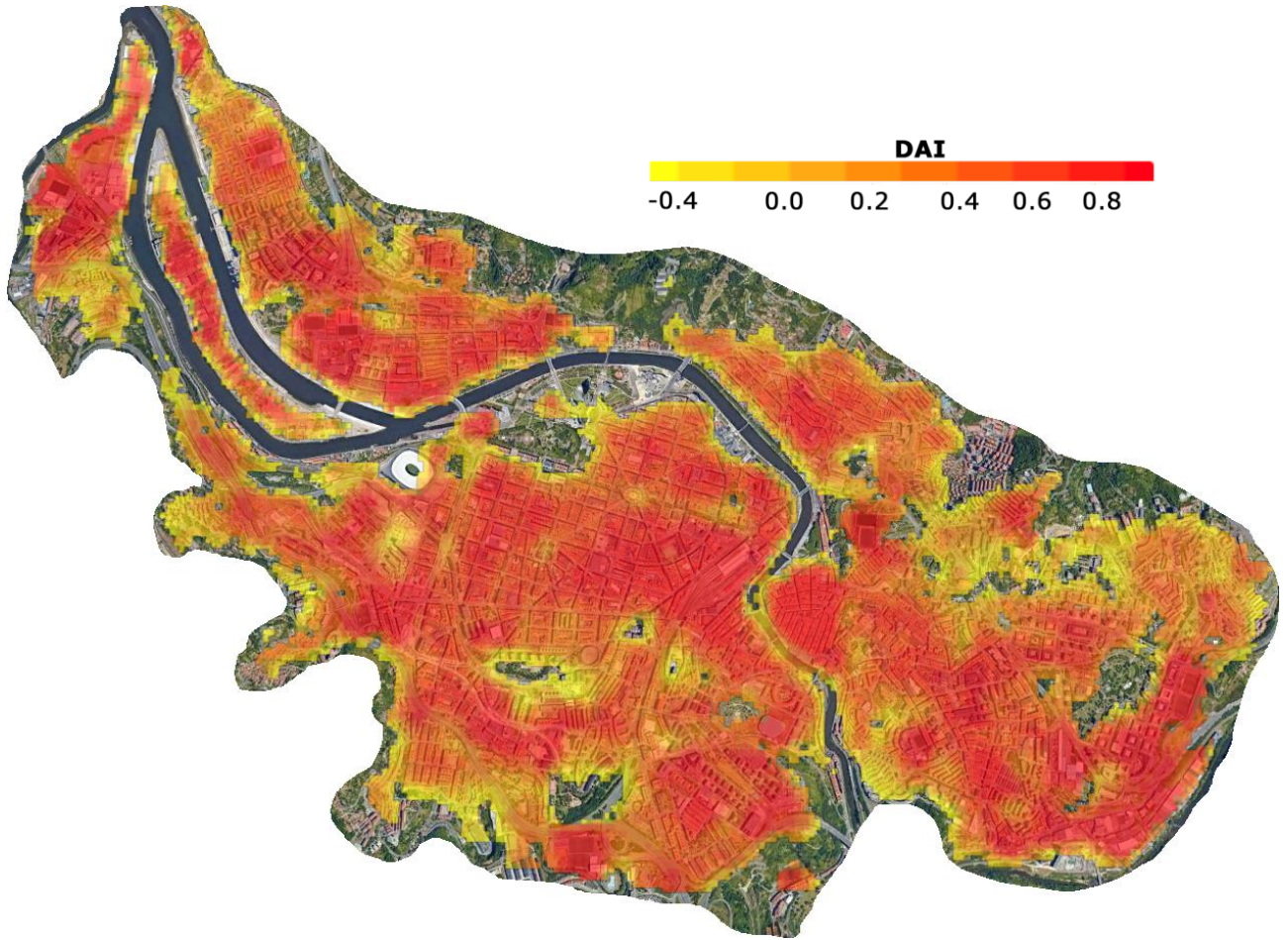
MALAGA



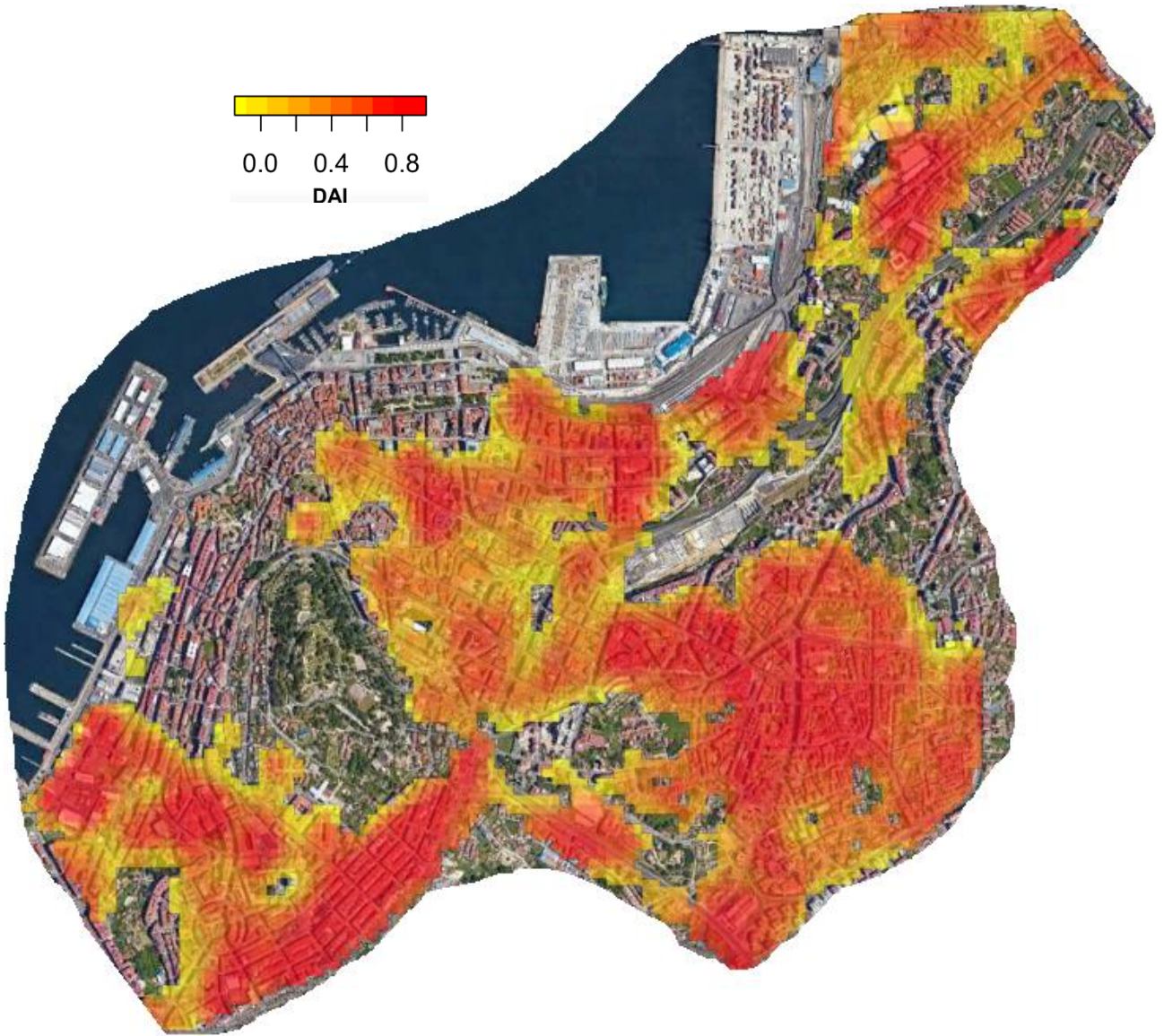
PALMA DE MALLORCA



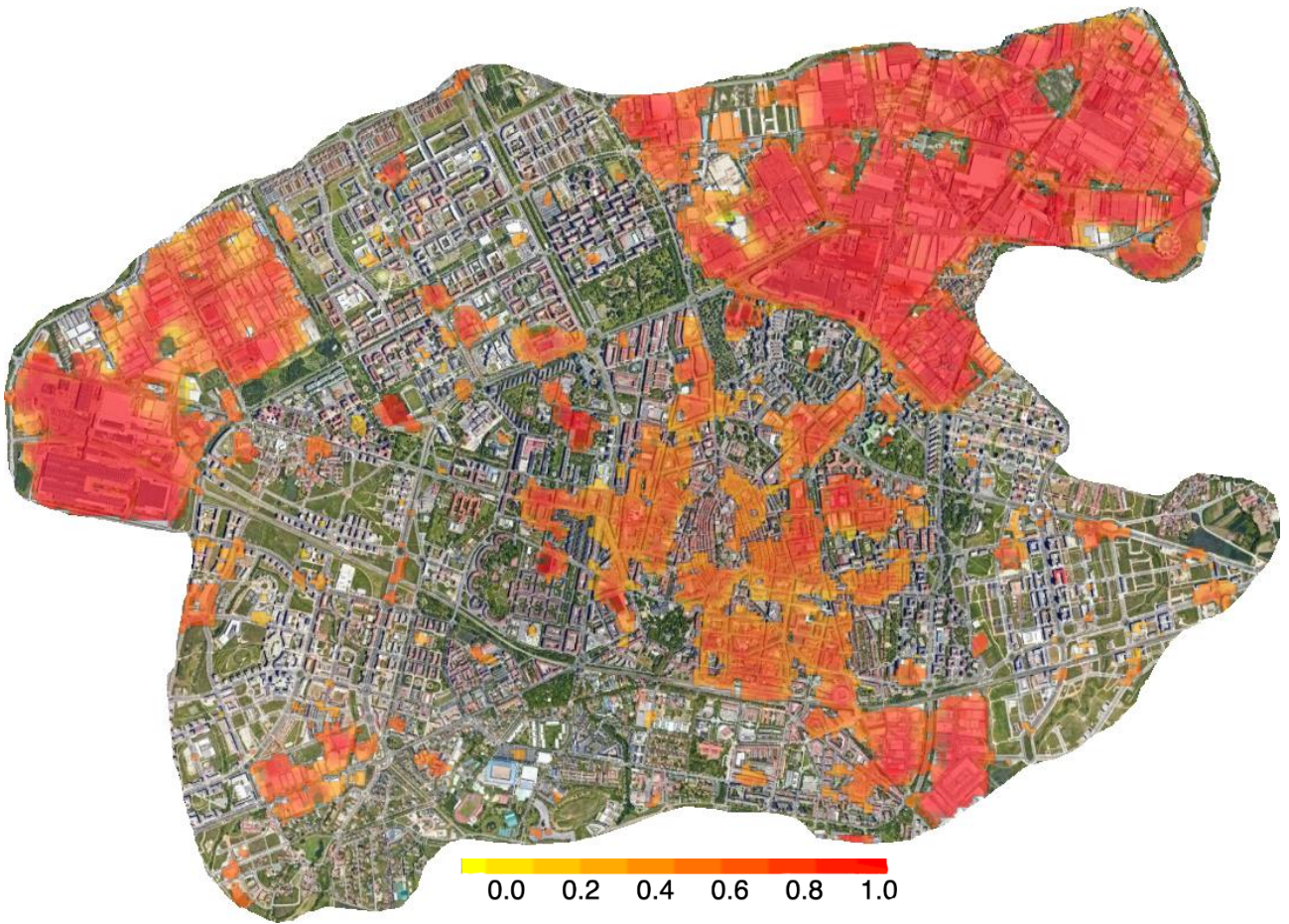
BILBAO



VIGO

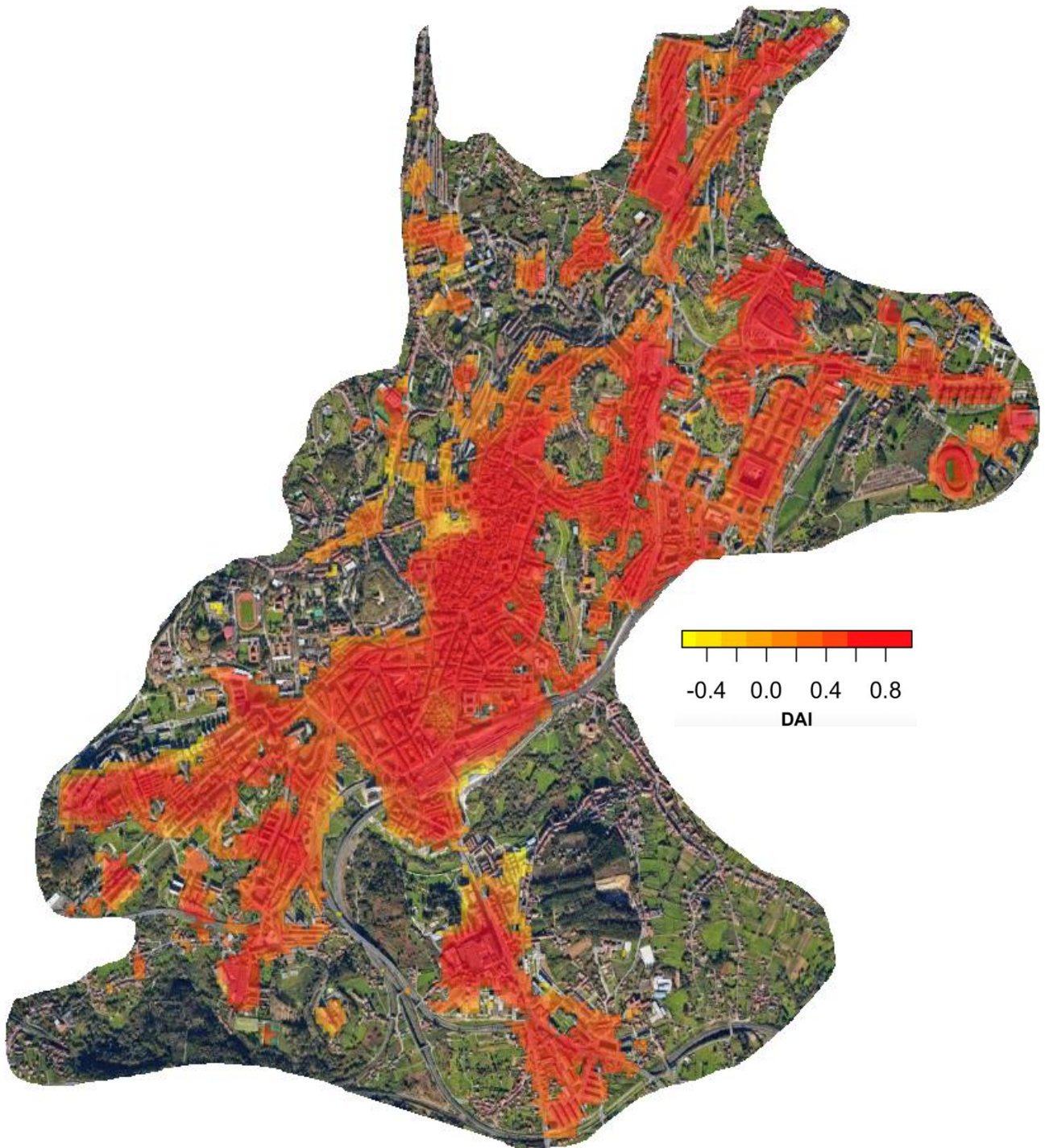


VITORIA

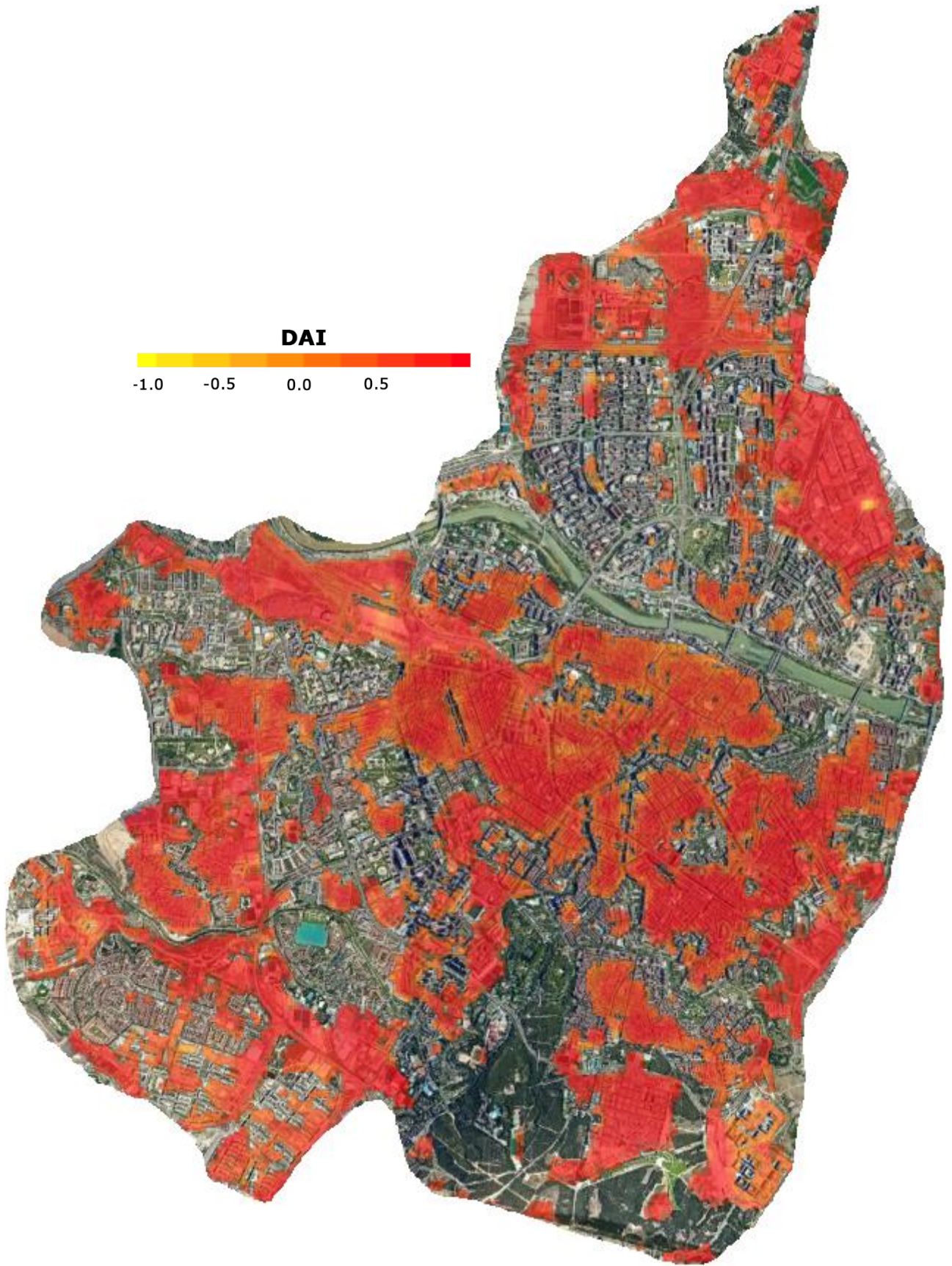


DAI

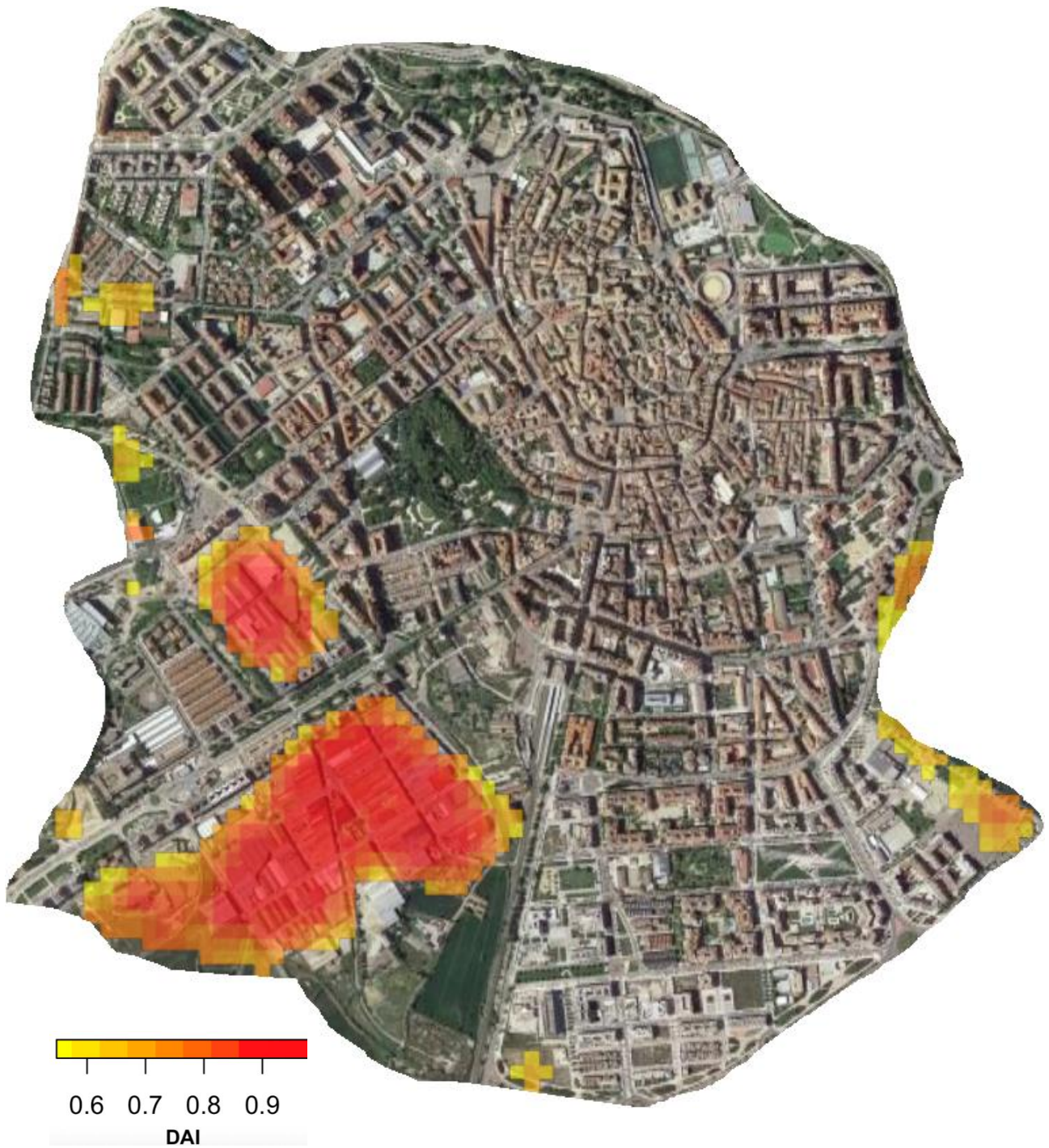
SANTIAGO DE COMPOSTELA



ZARAGOZA



HUESCA



LLEIDA

