

# CITIZEN INITIATIVES AGAINST THE ESTABLISHED FOOD ORDER. EXPERIENCES FROM THE PERSPECTIVE OF URBAN AGGLOMERATION IN SEVILLE (SPAIN)

PhD Gema González-Romero

PhD David López-Casado

Universidad de Sevilla (Spain)

Grant PID2019-105711RB-C62 funded by:



# CITIZEN INITIATIVES AGAINST THE ESTABLISHED FOOD ORDER. EXPERIENCES FROM THE PERSPECTIVE OF URBAN AGLOMERATION IN SEVILLE (SPAIN)

## SUMMARY

- 1. STATUS OF THE ISSUES**
- 2. OBJETIVE**
- 3. RESEARCH QUESTIONS**
- 4. CASE OF STUDY**
- 5. METHODOLOGY**
- 6. RESULTS**
- 7. CONCLUSIONS**

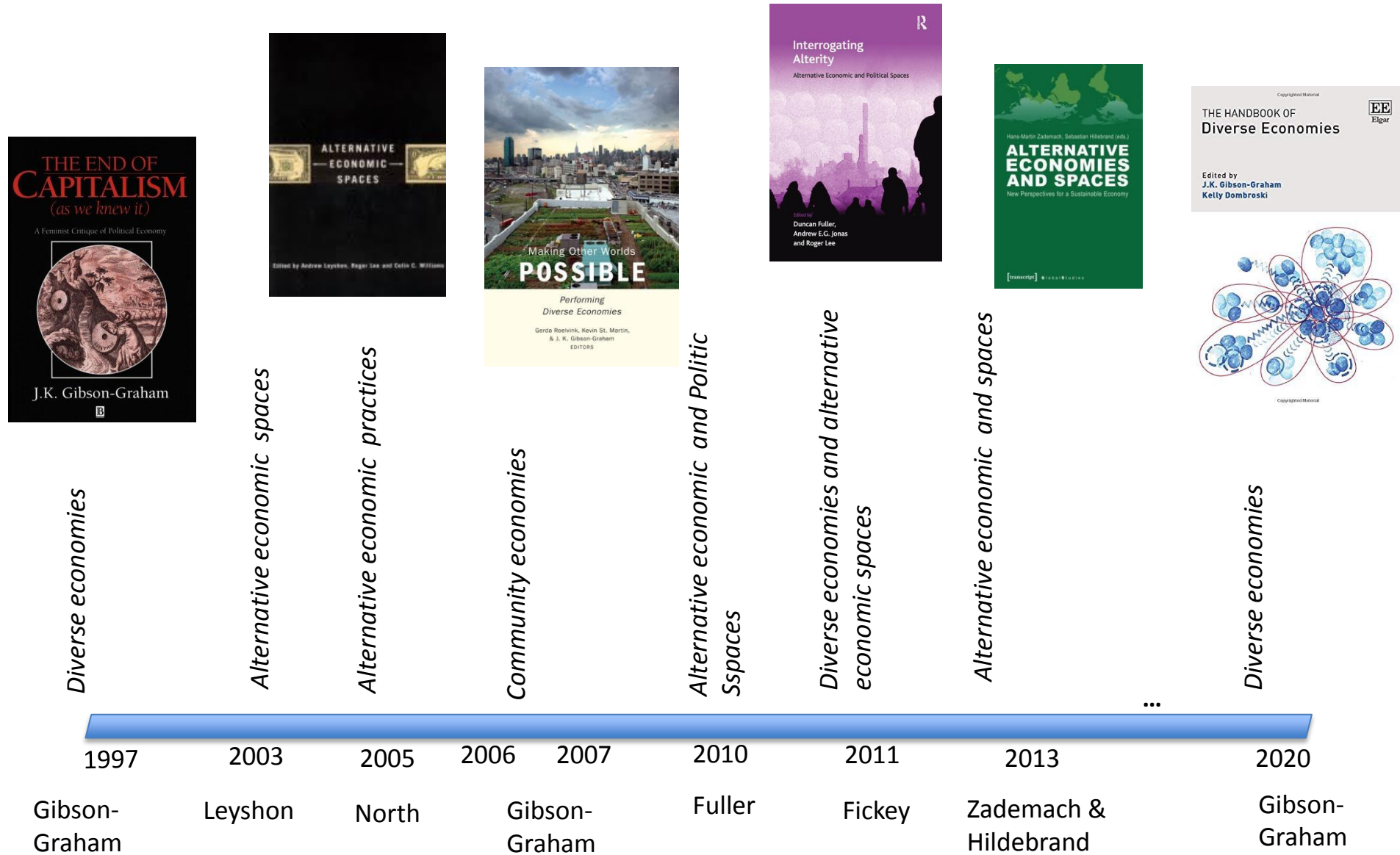
PhD Gema González-Romero  
PhD David López-Casado  
Department of Human Geography  
Universidad de Sevilla (Spain)

Grant PID2019-105711RB-C62 funded by:



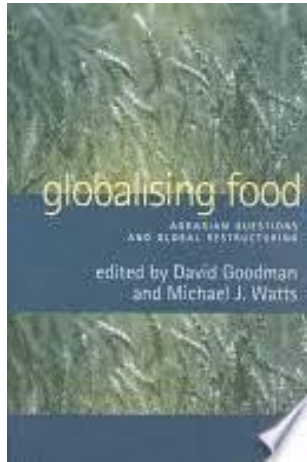
# 1. STATUS OF THE ISSUES

## Alternative Economic Practices in Economic Geography Studies

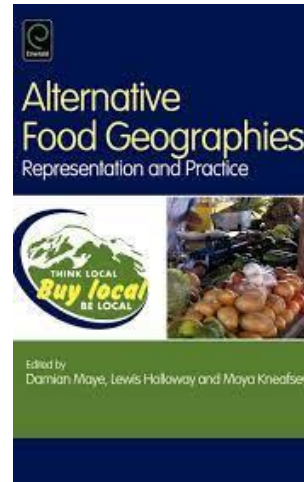


# 1. STATUS OF THE ISSUES

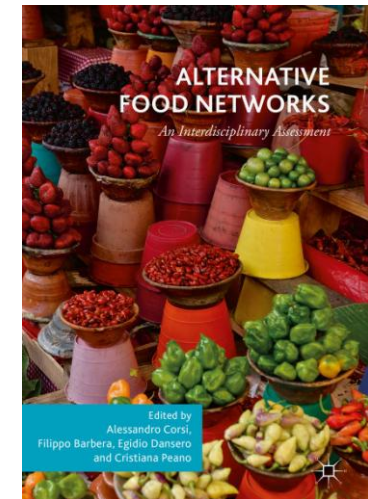
## Alternative Food Network



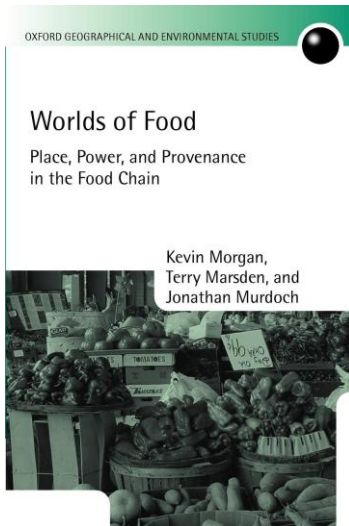
Whatmore y Thorne, 1997



Marsden et al., 2000



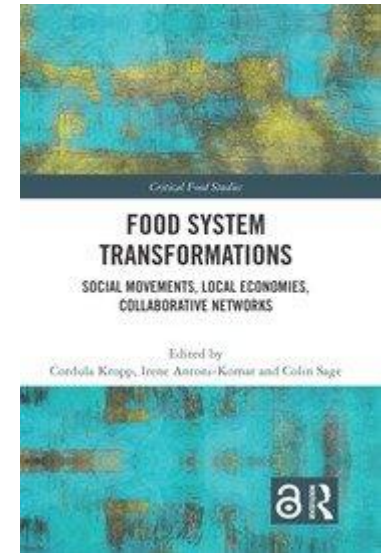
Corsi et al, 2018



Kevin Morgan, Terry Marsden,  
and Jonathan Murdoch, 2009



Goodman et al, 2012



Kropp et al, 2021

## ALTERNATIVE FOOD NETWORKS

Transformative proposals against the dominant model of food production, distribution and marketing based on new links and relations between producer-Consumers who, based on social ties, empower the population of a territory ensuring its economic and ecological sustainability.

### Types of Food Alternative Networks

PRODUCTION	TRADE	CONSUMPTION
<ul style="list-style-type: none"><li>• Community urban gardens</li><li>• Associations of small producers</li></ul>	<ul style="list-style-type: none"><li>• Seed banks</li><li>• Farmer markets</li></ul>	<ul style="list-style-type: none"><li>• Consumer groups</li><li>• Cooperative of consumers</li></ul>

## 2. OBJETIVES

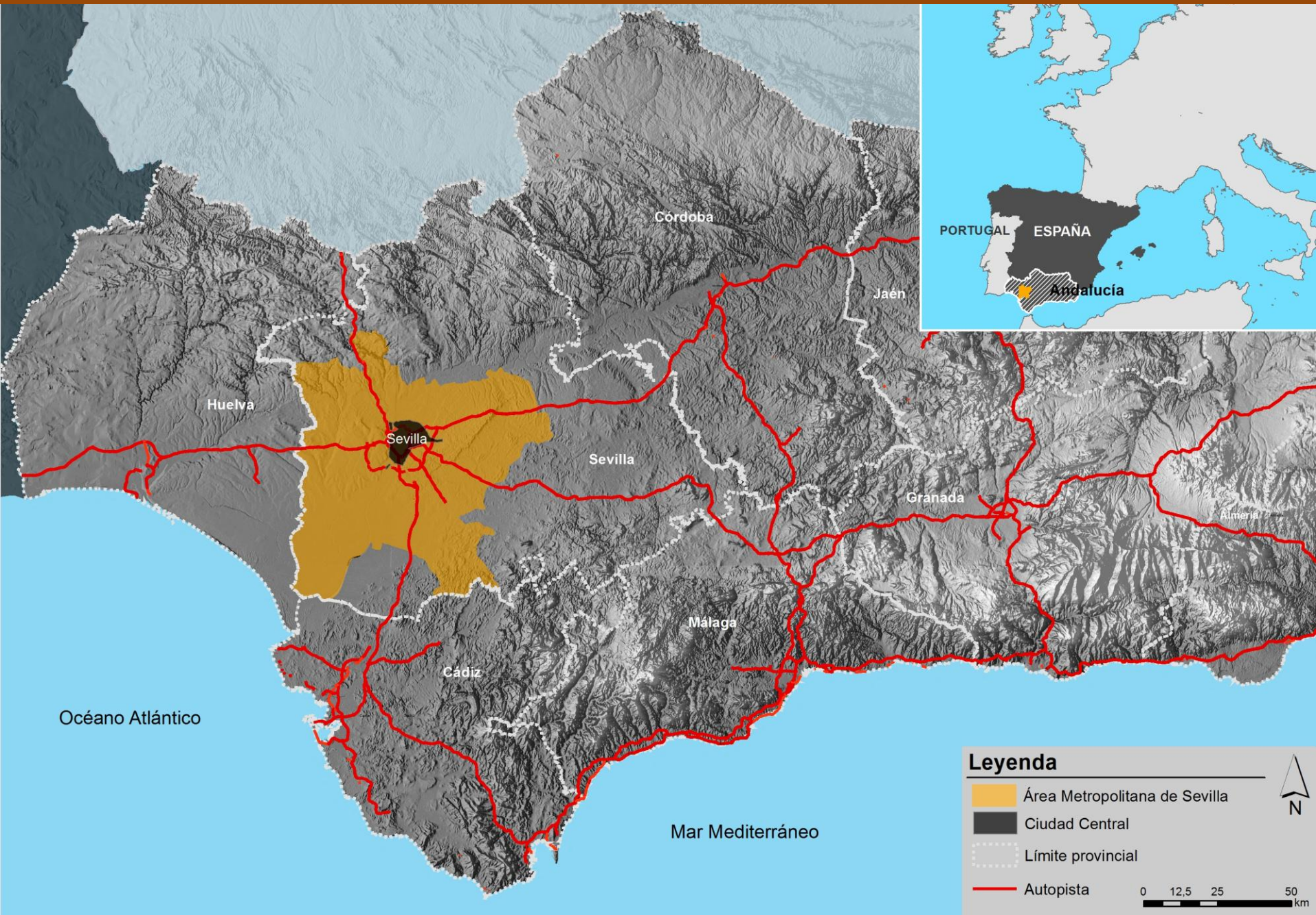
The objective of this paper is to analyze the territorial implications of alternative food networks, which are defined as modes of food supply that advocate new forms of producer-consumer relationship and collaboration



### 3. RESEARCH QUESTIONS

1. What presence do alternative food networks have in the Metropolitan Area of Seville?
2. How has it evolved?
3. Who are their actors? how do they connect?
4. What are the territorial implications of these food practices in the scope of study? Are there impacts at different scales?
5. Where are the production sites located? Where are the distribution spaces located?

## 4. CASE OF STUDY





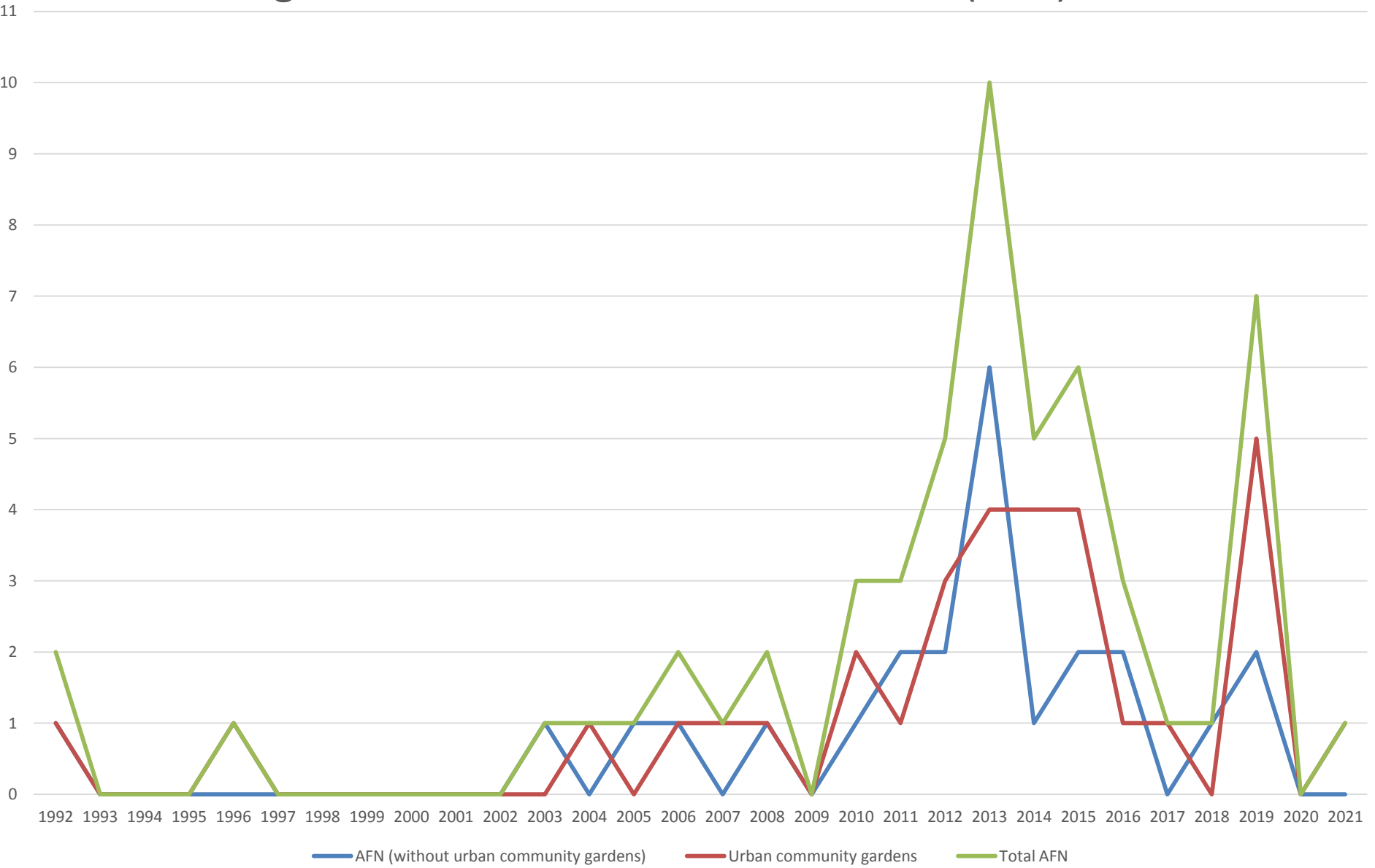


# Types of practices: Alternative Food Network

	Types of practices: AFN	Central core of metropolitan area	Metropolitan crown	TOTAL
<b>PRODUCTION</b>	Urban community gardens	13	28	41
<b>TRADE</b>	Seed Banks	2		2
	Farmer Markets	2	2	4
	Social Markets	3	1	4
<b>CONSUMPTION</b>	Coop. Of Consumers	1		1
	Consumer groups	5	2	7
	Associations of small producers- consumers	5	5	10
<b>TOTAL</b>		31	38	69

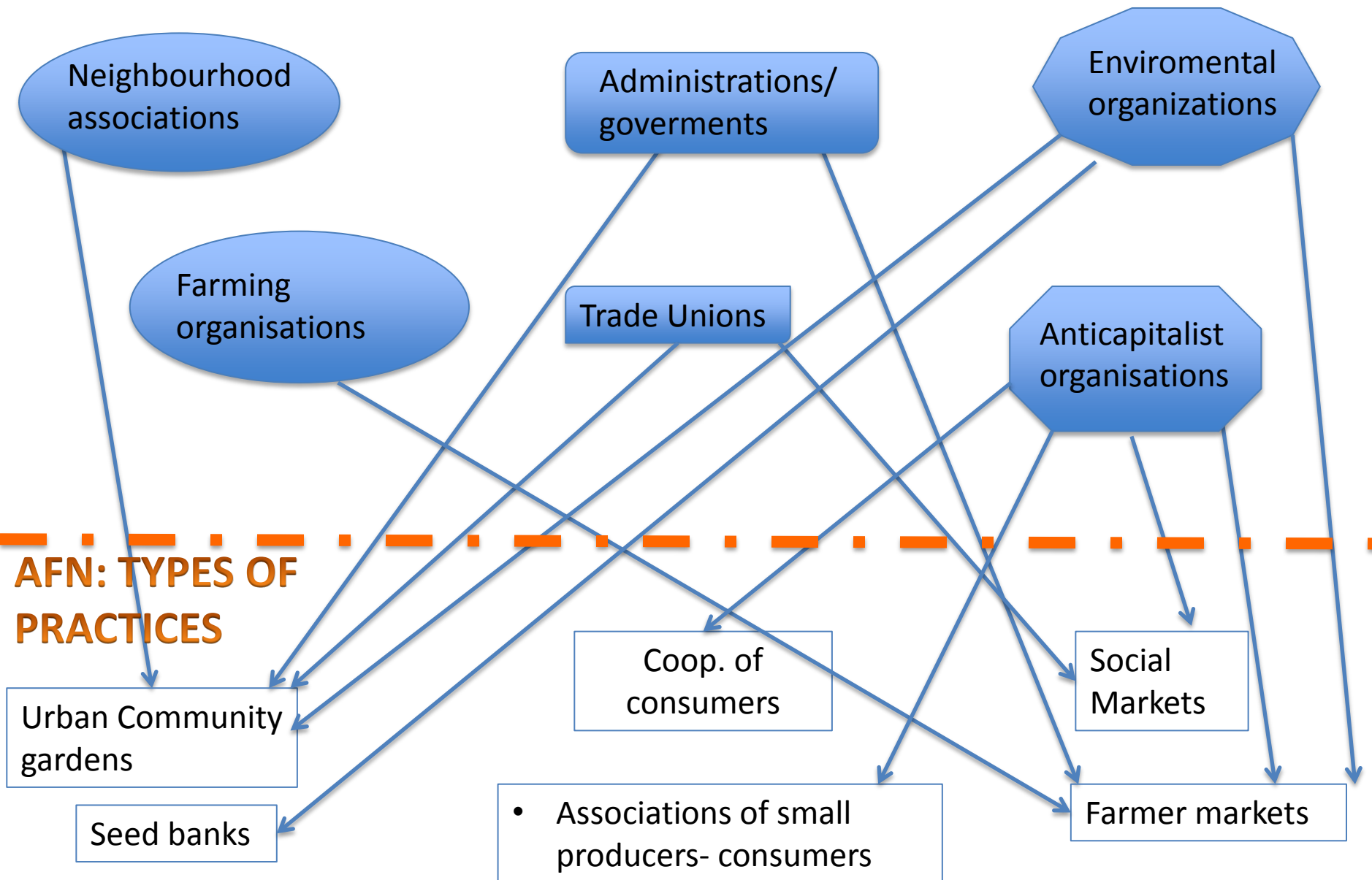
# 6. RESULTS

## Emergence of Alternative Food Networks (AFN)



## ACTORS

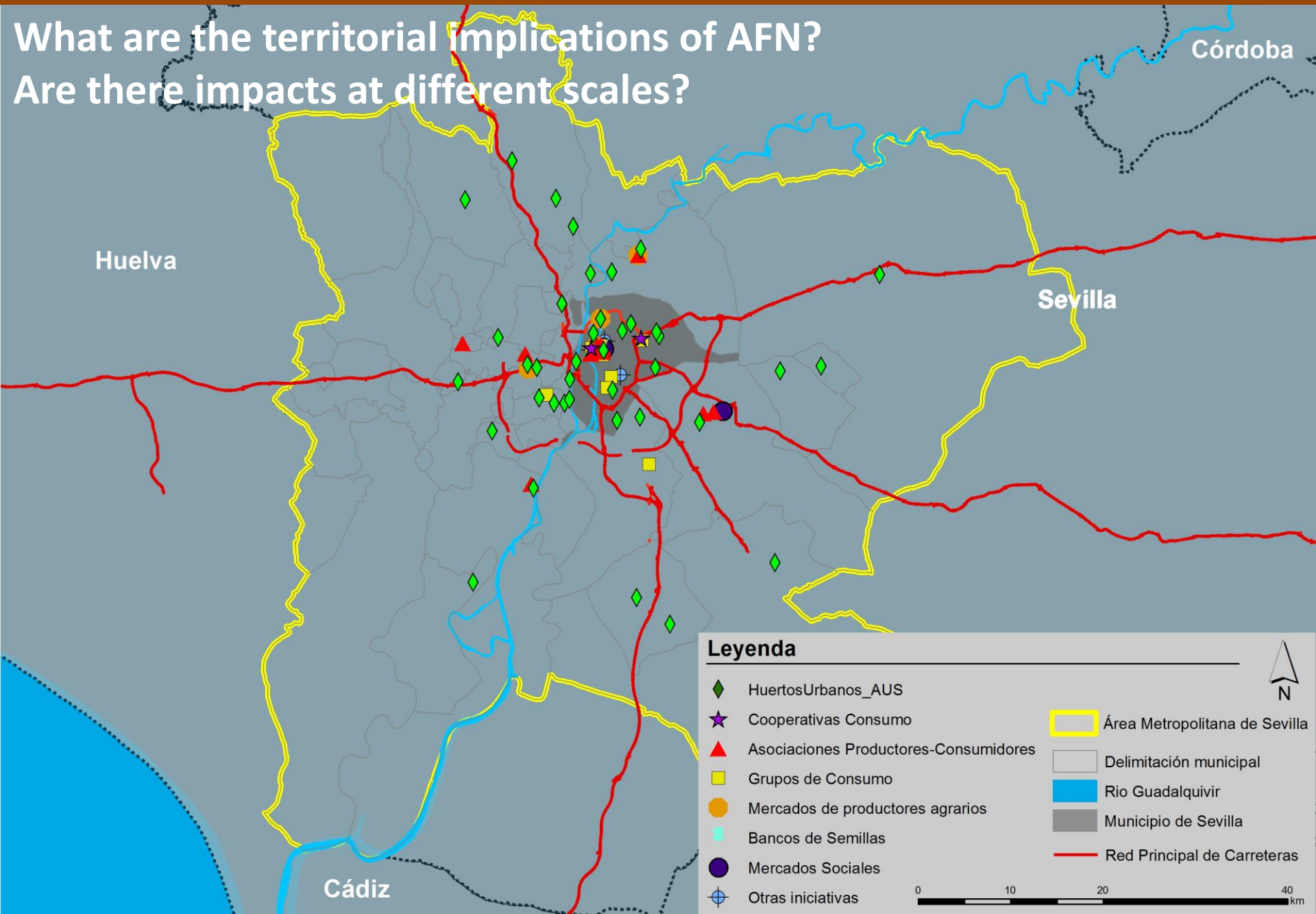
### Who are the actors?





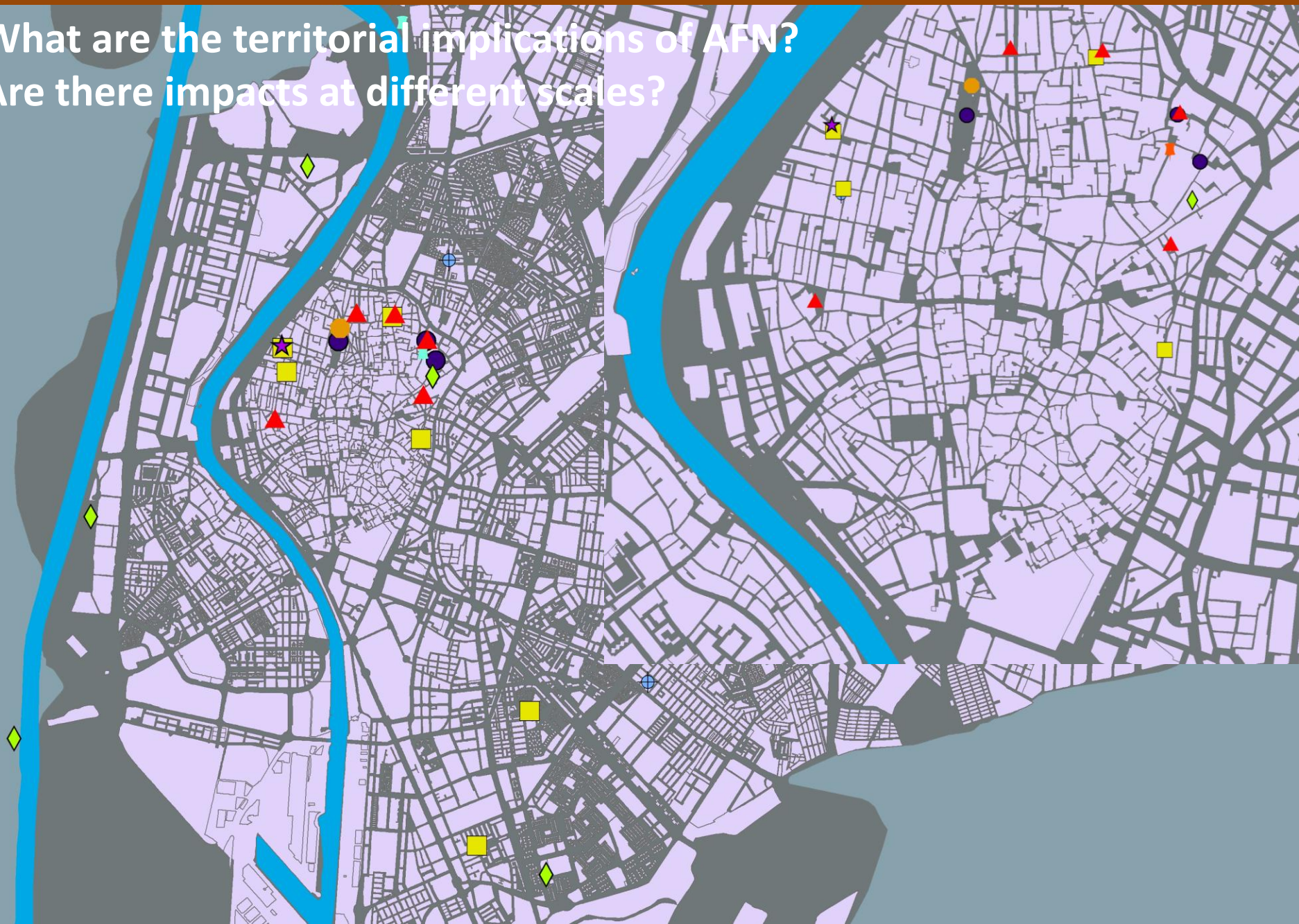
# 6. RESULTS

What are the territorial implications of AFN?  
Are there impacts at different scales?



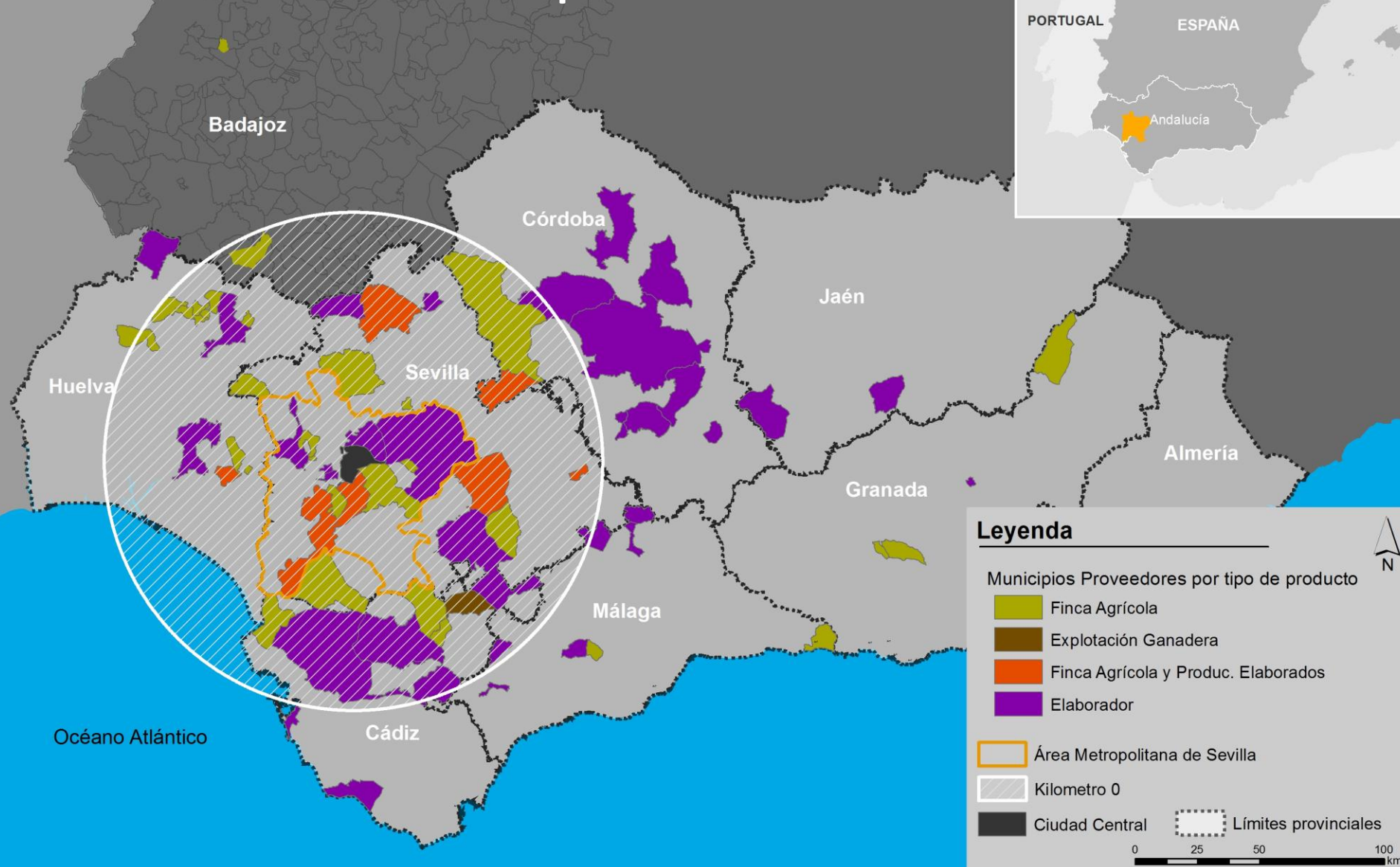
## 6. RESULTS

What are the territorial implications of AFN?  
Are there impacts at different scales?



# 6. RESULTS

Where are the production sites located?  
Where are the distribution spaces located?





## 7. CONCLUSIONS

- ✓ Alternative food networks proliferate in urban areas and arise associated with social movements that pursue the construction of an alternative distribution system and food order that aim at social and ecological transformation
- ✓ The crisis of 2008 favored its growth, as did other alternative economic practices in Seville and other Spanish cities.
- ✓ The social base on which alternative food networks are based is made up of culturally transforming agents, linked to social movements in defense of the environment, food sovereignty and communal goods, and facing globalization and capitalism.
- ✓ The actors establish a network of relationships based on mutual knowledge, collective trust and shared identities, which are key to their generation and reproduction. Its organization and operation are based on cross-cutting links, predominantly internal and local.

## 7. CONCLUSIONS

- ✓ The intensity of the incorporation of territories into alternative food networks is related to the proximity to the city of Seville. The question of place is of great importance in the supply of products, especially when they are fresh
- ✓ The territorial distribution of alternative food networks is not homogeneous, since three main areas of concentration are observed: central city and suburban northern and western sectors.
- ✓ The concentration of alternative food practices in the northern sector of the Historic City Center coinciding with the sector where tourist processes are still limited.
- ✓ The spatial distribution of these producers is determined by the type of food they supply and the type of practice in which they participate.

Thank you for your attention

Obrigado pela sua atenção

Gema González- Romero

[gemagonzalez@us.es](mailto:gemagonzalez@us.es)

David López- Casado

[dlopez19@us.es](mailto:dlopez19@us.es)

Universidad de Sevilla (Spain)

Grant PID2019-105711RB-C62 funded by:

