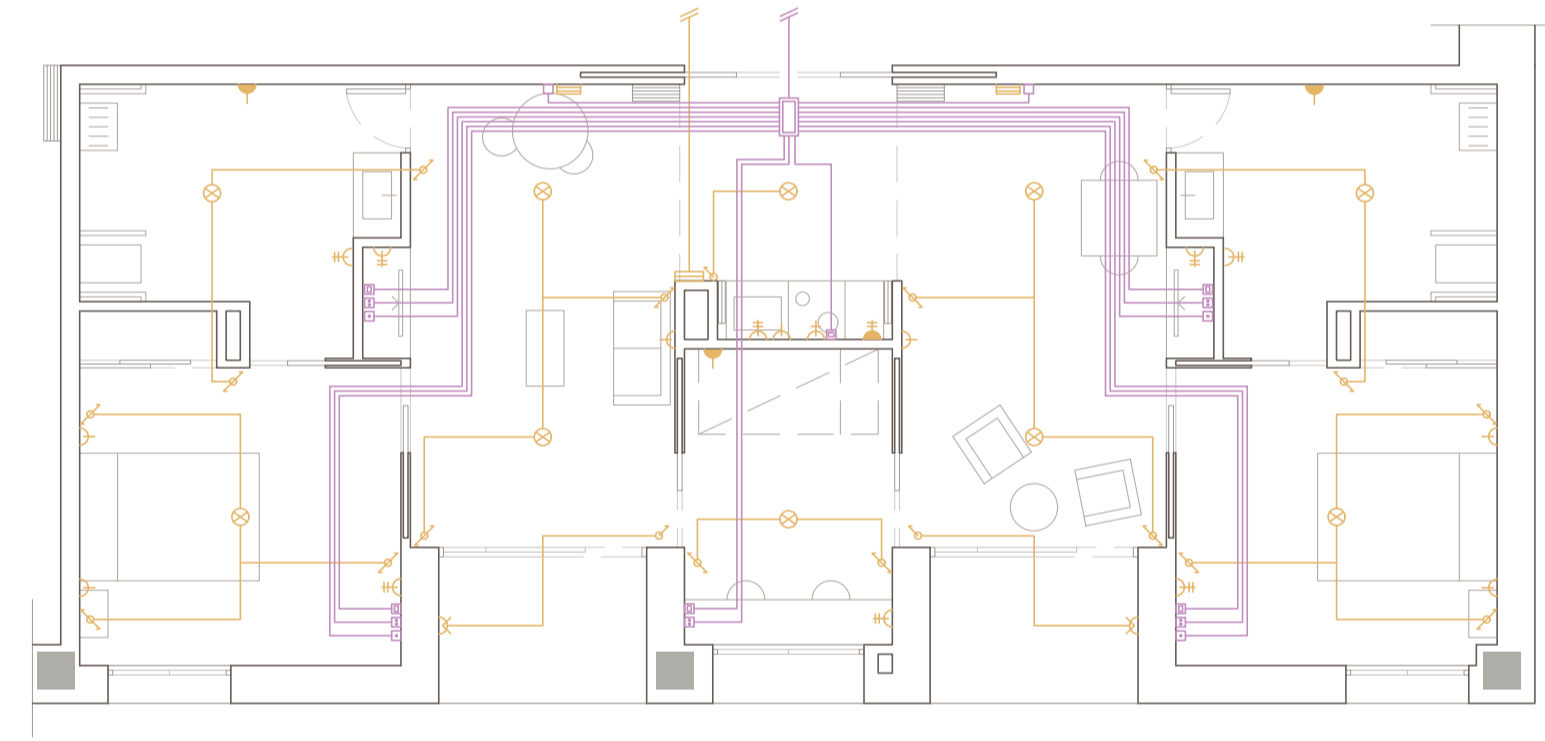
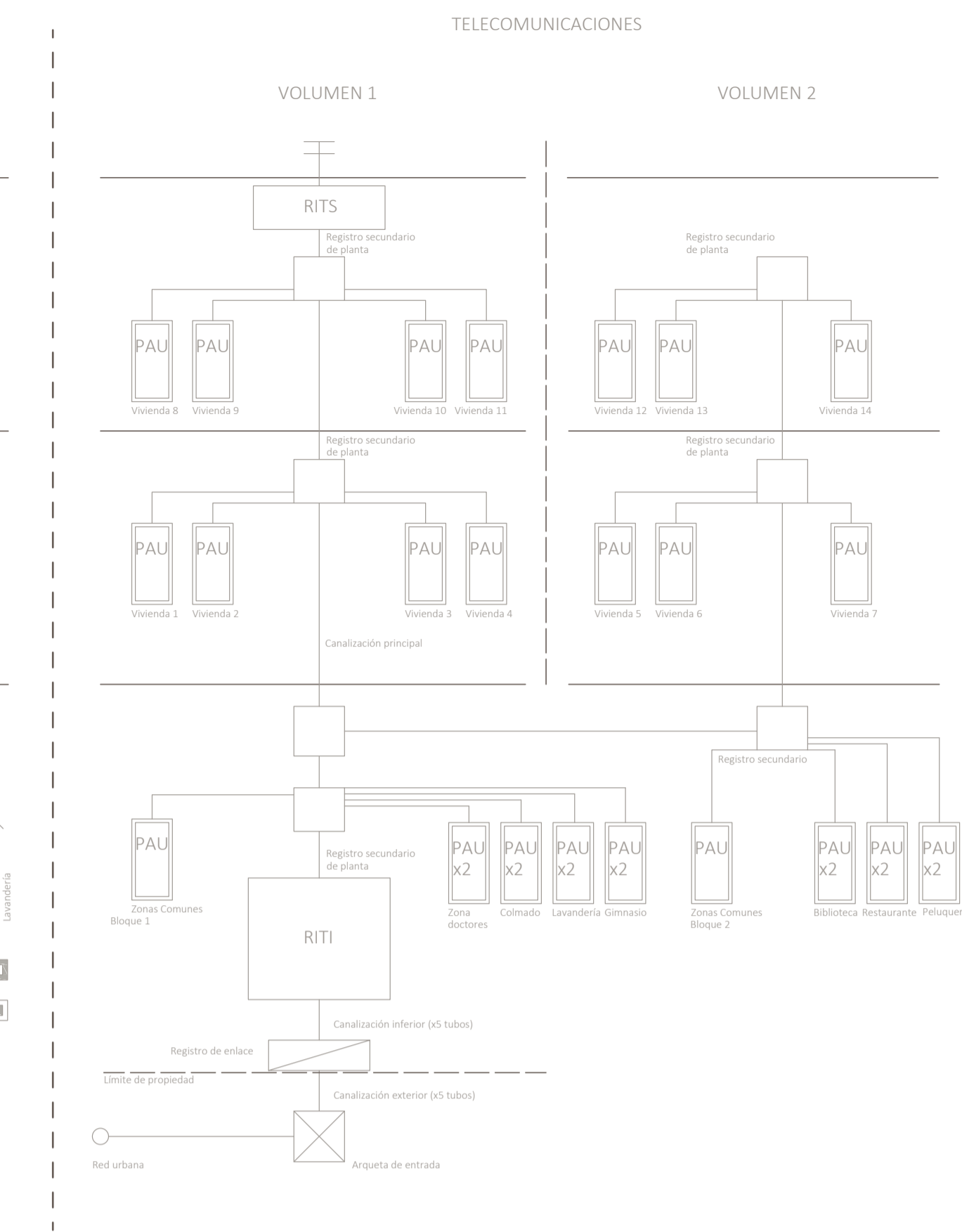


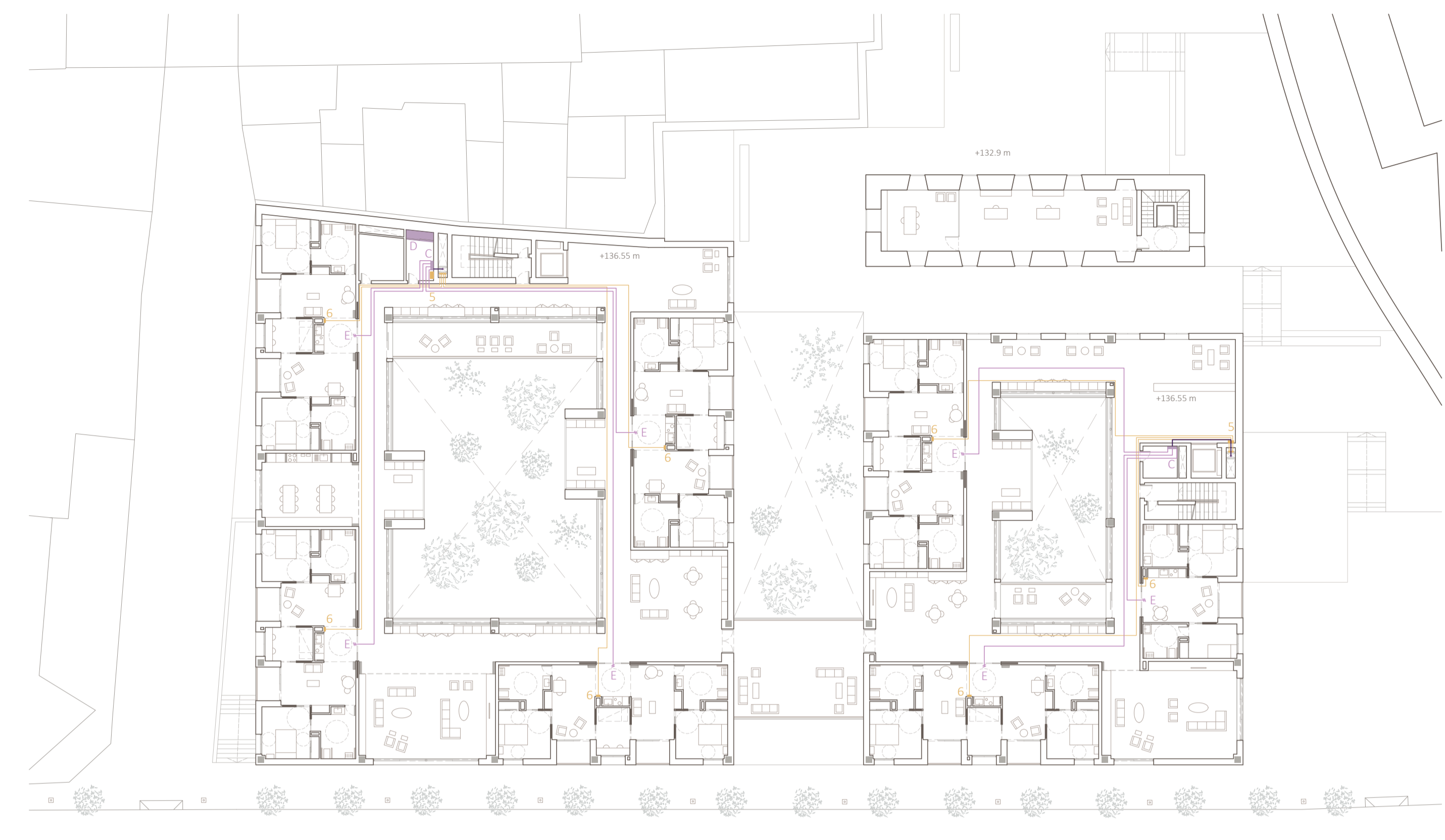
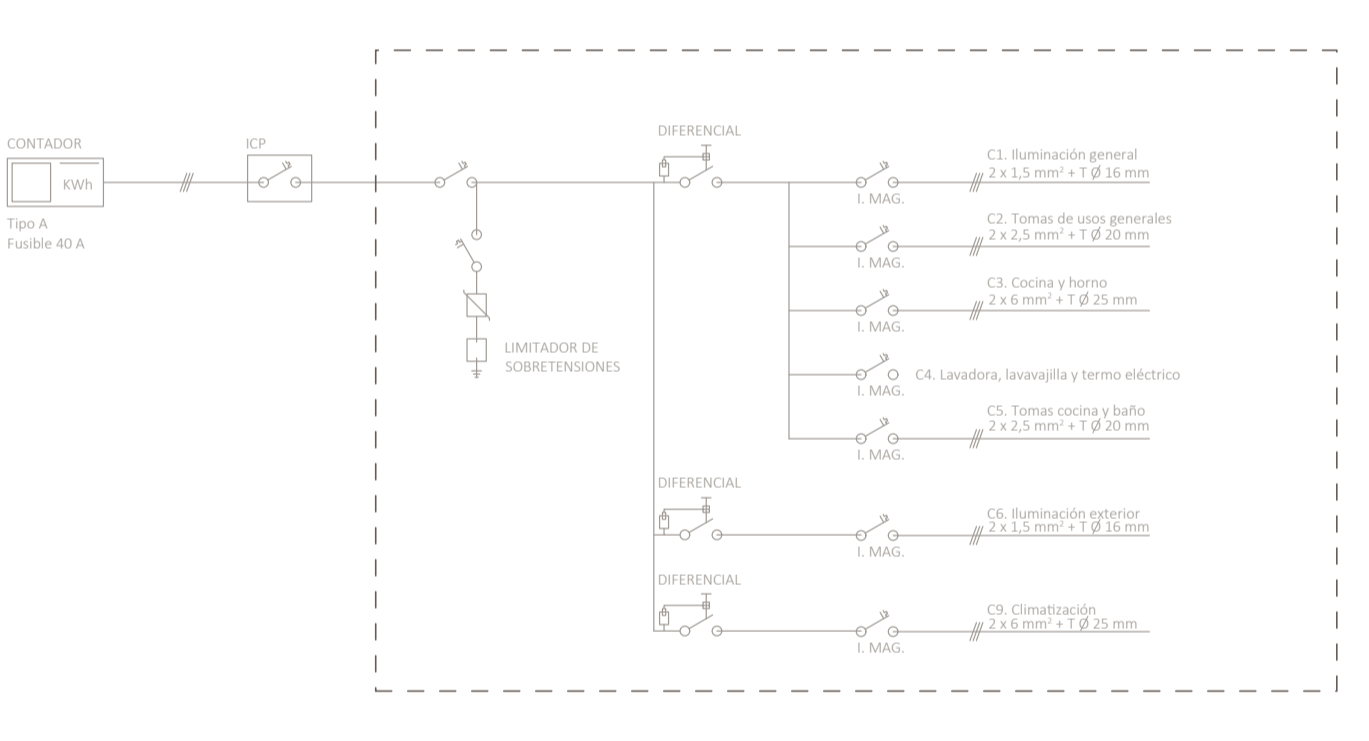
ESQUEMAS DE PRINCIPIO



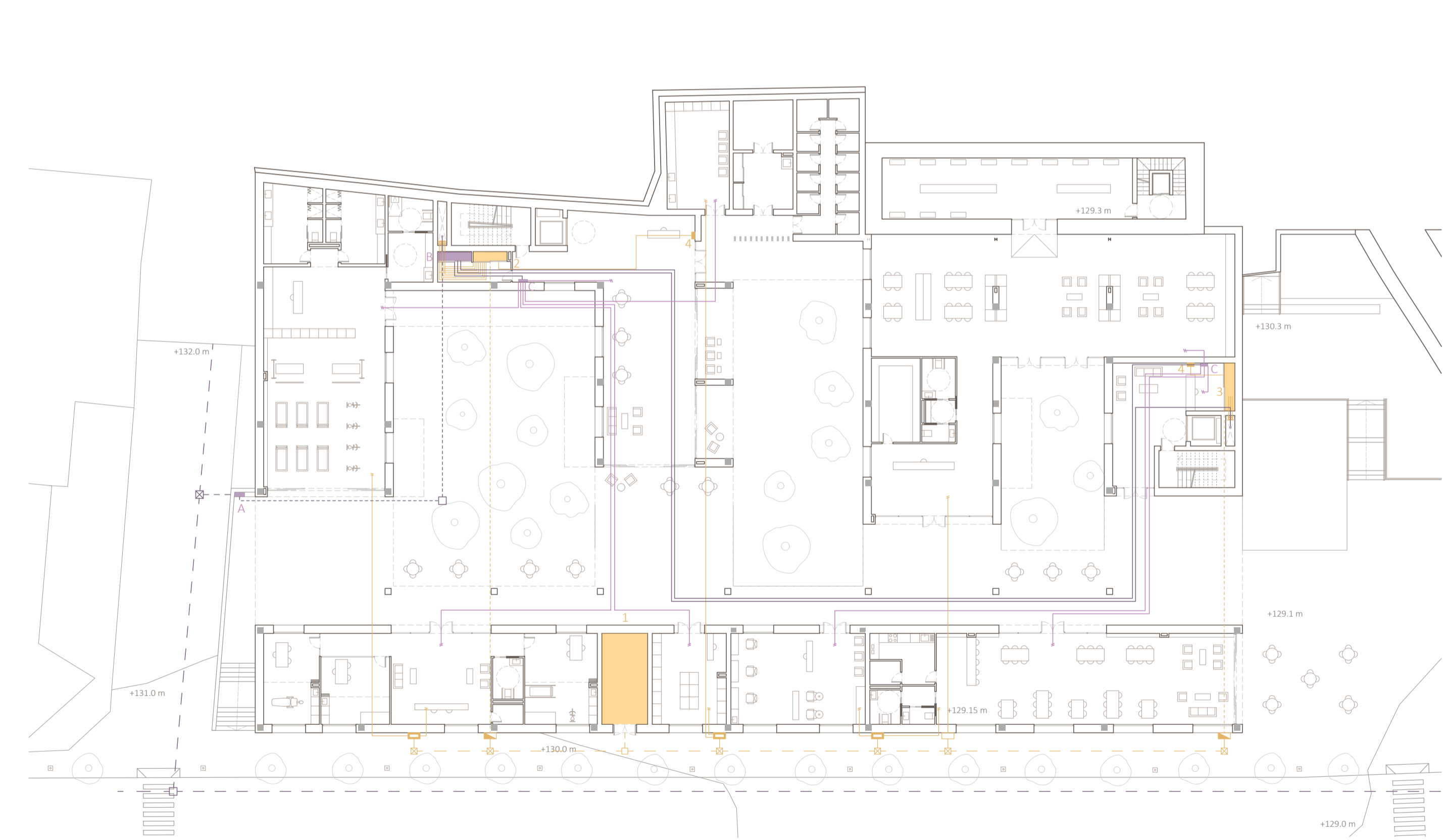
AMPLIACIÓN DE VIVIENDA  
ESCALA 1:100



ESQUEMA UNIFILAR DE VIVIENDA



PLANTA SEGUNDA (+136,55 m)



PLANTA BAJA (+129,15 m)

19	INSTALACIÓN ELÉCTRICA Y TELECOMUNICACIONES	
	ARQUITECTURA PARA EL ENVEJECIMIENTO	MA 01
	P.F.C. E.T.S.A. SEVILLA	06-07-2021
	GUILLERMO E. DELGADO VALERA	CURSO 20/21

