

# Landfill leachate treatment using activated carbon obtained from coffee waste

*Tratamento de lixiviado de aterro sanitário com carvão ativado obtido de resíduos de café*

Rodrigo Poblete Chávez<sup>1\*</sup> , Ernesto Cortes Cortés Pizarro<sup>1</sup> , Yolanda Luna Galiano<sup>2</sup> 

## ABSTRACT

A set of experiments were carried out in order to establish and evaluate the potential of activated carbon, produced from coffee waste in adsorption process, in the depuration of landfill leachate. Different reagents were studied in the activation of carbon: HCl, HCl + H<sub>2</sub>O<sub>2</sub>, H<sub>3</sub>PO<sub>4</sub>, H<sub>3</sub>PO<sub>4</sub> + H<sub>2</sub>O<sub>2</sub>, all with an impregnation rate of 1:1. The activated carbon that showed the best global results was activated with H<sub>3</sub>PO<sub>4</sub>, obtaining a 51.0, 32.8, 66.0, 81.0 and 97.1% elimination of chemical oxygen demand, ammonia, total chlorine, bromine and copper, respectively. This activated carbon has a total pore area of 4.85 m<sup>2</sup>/g and a median pore diameter of 65.32 micrometers. When different loads of this carbon were placed in a stirrer system in contact with landfill leachate, with the aim of evaluating the effect of the adsorption load and contact time, the concentration of ammonia decreased from the beginning of the adsorption process to the end of it, and the removal of ammonia increased with the increase in the adsorbent load. However, the trend of the amount adsorbed per unit mass decreased with increased dosage. The model Freundlich equilibrium isotherm fits experimental data adequately, giving R<sup>2</sup> values of 0.95, 1/n of 0.5183, and a K value of 7.08\*10<sup>-5</sup> L/g, being favourable for adsorption process.

**Keywords:** landfill leachate; adsorption; waste; by-product.

## RESUMO

Foi realizada uma série de experimentos para estabelecer e avaliar o potencial de carvão ativado produzido de resíduos de café por meio de um processo de adsorção na depuração do lixiviado de aterro sanitário. Foram estudados diferentes reagentes para a ativação do carvão: HCl, HCl + H<sub>2</sub>O<sub>2</sub>, H<sub>3</sub>PO<sub>4</sub>, H<sub>3</sub>PO<sub>4</sub> + H<sub>2</sub>O<sub>2</sub>, todos com taxa de impregnação de 1:1. O carvão que apresentou os melhores resultados foi ativado com H<sub>3</sub>PO<sub>4</sub>, obtendo uma eliminação de 51,0; 32,8; 66,0; 81,0; e 97,1% de demanda química de oxigênio e concentração de amônia, cloro total, bromo e cobre, respectivamente. O referido carvão ativado tem uma área total de poro de 4,85 m<sup>2</sup>/g e diâmetro médio de poro de 65,32 micrômetros. Com o objetivo de avaliar o efeito da carga de adsorção e do tempo de contato, foram colocadas diferentes cargas desse carvão em um sistema de agitação em contato com o lixiviado de aterro sanitário. Observou-se que a concentração de amônia diminuiu e que sua remoção foi maior à medida que a carga adsorvente aumentava. No entanto, a quantidade adsorvida por unidade de massa diminuiu com o aumento da dosagem. Os dados experimentais adequaram-se corretamente ao modelo de isoterma de Freundlich, obtendo-se valores de R<sup>2</sup> de 0,95, 1/n de 0,5183, e um valor de K de 7,08\*10<sup>-5</sup> L/g, considerados favoráveis para o processo de adsorção.

**Palavras-chave:** lixiviado de aterro; adsorção; resíduos; subproduto.

## INTRODUCTION

Landfilling is the most commonly used method for municipal solid waste (MSW) disposal around the world, though recycling, composting and incineration is currently being encouraged (XIE *et al.*, 2014). One major worry in this waste management process is the generation of leachate by the waste within the system and/or the infiltration of groundwater/rainfall. Landfill leachate (LL) usually has high concentrations of organic pollutants, relatively high chemical oxygen demand (COD), toxic materials (xenobiotic organics), ammonia, heavy metals and inorganic salts, as well as refractory compounds such as humic substances

and fulvic-like fractions, which are not easily degradable and cannot be effectively treated either by biological processes such as activated sludge, anaerobic filtration and anaerobic lagoons (MARTINS *et al.*, 2012). In a study carried out by Alsaiibi, Mogheir and Afifi (2011), the degree of groundwater pollution near a landfill was evaluated due to the leachate effect. It was observed that the concentration of ammonia, nitrate, electric conductivity, chloride and COD exceed permissive limits, evidencing groundwater contamination.

If it is not properly collected and managed, it can potentially contaminate nearby surface and groundwater, affecting its quality and

<sup>1</sup>Universidad Católica del Norte - Región de Antofagasta, Chile.

<sup>2</sup>Universidad de Sevilla - Sevilla, Spain.

**Corresponding author:** rpobletech@ucn.cl

**Received:** 04/19/2017 - **Accepted:** 06/13/2018 - **Reg. ABES:** 178655

compromising human health. For instance, the presence of metal ions in wastewater and their potential impact have been scientifically studied because of their extreme toxicity even at low concentrations, and their tendency to accumulate in the food chain (MOHAN; SINGH, 2002). In addition to groundwater contamination, soil quality alteration and ecosystem imbalance has been observed in landfilling. Therefore, the removal of persistent LL pollutants is a significant and necessary challenge to be met (CORTÉS-LORENZO *et al.*, 2014).

The treatment processes of LL are very complicated, expensive and generally require various process applications because of their high loading, complex chemical composition and seasonally variable volume (BU *et al.*, 2010). Biological treatment can also partially remove contaminants, but their removal efficiencies are generally found to be low to moderate because of the fact that several of the emerging contaminants are relatively resistant to biodegradation (LIU *et al.*, 2012).

The combination of biological, chemical, and physicochemical processes has the ability to synergize the advantages of each single process, and has been documented as being effective for treating stabilized LL (WANG *et al.*, 2009).

The activated carbon (AC) adsorption process has emerged to be a technological strategy for wastewater treatment, due to its simplicity of design, ease of operation, insensitivity to toxic substances and high ability to removing a wide range of pollutants (FOO; LEE; HAMEED, 2013).

AC are materials containing large surface areas, well-developed porosity and rich surface groups. Therefore, it has been widely used for the separation of gases, the recovery of solvents, the removal of organic pollutants from drinking water, and as a catalyst support (DE RIDDER *et al.*, 2013; ELMOUWAHIDI *et al.*, 2012).

Adsorption onto AC has been reported as an effective method for removing high molecular weight refractory organic matter from aqueous solutions (HALIM *et al.*, 2010). AC has been widely used as adsorbent, catalyst and catalyst support in a variety of environmental applications like hazardous pollutant removal (SANDOVAL *et al.*, 2011). However, studies have been complicated by a wide range of experimental conditions and variability of the constituents of LL (FOO; HAMEED, 2009).

Various non-conventional low cost adsorbents have shown good adsorption capacities in removing COD from wastewater (LIM; SHAABAN; YIN, 2009; KALDERIS *et al.*, 2008). To obtain AC, different precursors of vegetable origin (wood, oils, husks, pits and seeds of plants and fruits) and polymeric materials can be used. The use of agricultural residues presented significant advantages, because of their low cost, and because they come from renewable sources and allow their reuse. Hence, in recent years many studies have been reported involving the production of AC using agricultural residues, such as apricot and/or cherry pits, wheat straw, bean and rice husks, nut husks, and corn husks (GUO; ROCKSTRAW, 2007).

roduction of activated carbon (AC) from agricultural byproducts is a research field that has gained increased interest in recent years because of its potential for the disposal of agro-residues. At the same time, a beneficial byproduct that can be used in a number of environmental applications is produced. This paper surveys the developments in the production processes of AC from agricultural byproducts in the past 7 years from 2005 to 2012 via conventional and microwave heating. Emphasis is placed on the applied methodology and the influences of activating conditions, such as carbonization temperature, retention time, and impregnation ratio. From the review of AC production processes, agricultural wastes produced by a chemical method with microwave heating can be a source of AC with relatively higher surface area than that produced via conventional heating

One potential source of AC is coffee, which is produced all over the world and has a high annual production (REFFAS *et al.*, 2010), generating a large volume of residues; in fact, every year, about 30 million tons of solid waste from coffee industry are produced, and most is inadequately disposed off. However, AC produced from coffee waste has shown interesting capacities in retaining iron and orthophosphate (OLIVEIRA *et al.*, 2009), 4-chloro-2-methyl phenoxy acetic acid (CHING *et al.*, 2011; AL-ZABEN; MEKHAMER, 2017).

The aim of this study was to evaluate the potential of AC obtained from coffee waste using different activation reagents, adsorbent loads, and adsorption treatment times to depurate LL, in order to reduce its concentration of iron, copper, ammonia, COD and chloride in this kind of water. The application of this waste would add value to coffee wastes, enabling reuse and decreasing the waste disposal cost and environmental pollution associated with this process, and also allow evaluate the treatment of LL.

## MATERIALS AND METHODS

### Preparation and analysis of adsorbents

Coffee waste was collected from local coffee shops in Coquimbo, Chile. The coffee used was roasted coffee and was sampled after preparing coffee drink. The coffee wastes were washed with boiled water to eliminate the impurities, dust and water-soluble substances followed by washing with distilled water. The washed coffee was oven-dried at 105°C for 24 h prior to activation. The dried coffee grounds were separated in four quantities of 50 g and placed in a porcelain flask of 200 mL. After that, they were activated using different reagents:

- HCl;
- HCl + H<sub>2</sub>O<sub>2</sub>;

- $\text{H}_3\text{PO}_4$ ;
- $\text{H}_3\text{PO}_4 + \text{H}_2\text{O}_2$ .

All with an impregnation ratio of 1:1. To do this, the mixture was stirred for 24 h. HCl and hydrogen peroxide were provided by Sigma-Aldrich, with a purity of 37 and 30%, respectively.  $\text{H}_3\text{PO}_4$  was provided by Merk and had a purity of 85%. The activated coffee was subsequently carbonized at 350°C for 3 h in a furnace (Vulcan A-550 Ney) under nitrogen atmosphere conditions. After cooling, the activated coffee waste was washed with distilled water in order to eliminate the residual organic and mineral matter. It was then dried at 105°C for 24 h. The carbon product was measured and stored in closed bottles.

The porosity analysis of the AC was carried out using an Autopore IV 9500 mercury intrusion porosimeter. Because the contact angle employed was 141°, the average pore sizes measured were theoretically in the 0.007–420 µm range. The samples used had the form of pellets of about 5 mm in size and had to be dried, so the samples were put in an oven at 105°C during 24 h. All analyses were carried out two times.

### Landfill leachate characterization

The LL samples used in this study were obtained from a landfill in Chile that manages municipal solid waste. The landfill has an area of 16.7 ha. General characteristics of the raw LL collected and studied were: COD: 13.460 mg/L, pH: 9.25, total copper: 204.00 mg/L, total chlorine: 50.00 mg/L, ammonia: 6.00 mg/L, conductivity: 33.61 mS/cm, total solids (TS): 559.00 mg/L, and bromine: 21.00 mg/L. The LL samples were obtained from different points of the landfill, and after that they were stored in darkness at 4°C with minimum exposure to the surrounding air to maintain their characteristics.

Measurement of pH was performing by a pH meter (WTW 3150i unit). COD was determined according to the EPA 410.4 method using the Colorimetric Method. Ammonia was determined using the Nessler method (D1426-92). Bromide was measured using the DPD method. Total chloride was measured using the Standart method 4500-Cl. Total copper was measured using the Bicichoninate Acid Method (HI-93702-01).

### Batch adsorption experiments

This study was divided into two steps of adsorption experiments in batch conditions. The first one was designed to evaluate which of the AC achieved higher levels of contaminant removal. The second one was to study the load of the chosen AC that improves removal of ammonia and its optimal contact time. Therefore, the study was focused on the identification of the condition that provides the best treatment performance. The LL was filtered using a 5 mm pore size filter before being submitted to an adsorption process. Both batch experiments were carried out without pH adjustment.

### Evaluation of activated carbons performance

Adsorption experiments were carried out by adding 4 g/L of different ACs in 500 mL of LL placed in 1 L glass flasks. The 4 flasks were placed in orbital shakers (PROTECH Model 720) and agitation was carried out at 150 rpm for 120 min. The LL samples were taken each 30 min, and concentration of COD, ammonia, total copper, chloride and bromide were measured. The removal percentage of those parameters was calculated using Equation 1:

$$\text{Removal (\%)} = \frac{C_0 - C_e}{C_0} * 100 \quad (1)$$

In which:

$C_0$  and  $C_e$  (mg/L): the concentration of COD, ammonia, total copper and chloride at the beginning and at the end of the runs, respectively.

The amount of pollutants adsorbed by AC during the batch adsorption process ( $q_e$ ) was determined using Equation 2:

$$q_e = \frac{(C_0 - C_e) * V}{m} \quad (2)$$

In which:

V: volume of solution (L);

m = dry weight of AC (g) used.

Microstructure of the AC that showed better results were examined using a scanning electron microscope (SM) LEO 1420VP.

### Evaluation of contact time and adsorbent load

Adsorbent load and contact adsorption time are important parameters affecting the adsorption process. Therefore, to determine the effect of these factors in the elimination of contaminants is essential in order to optimize the results and reduce costs. The AC that improved elimination of pollutants of LL investigated in this study was selected for evaluation of the contact time in the adsorption process and the adsorbent load that achieves an adequate removal of parameters. The temperature of the adsorption process was 19°C. To do this, a sample of homogenized LL was taken, divided into four parts and placed in a 1 L glass flask. In each flask a different load of the chosen AC was also placed. The 4 flasks were placed in the same shakers described in topic "Evaluation of activated carbons perform", and agitation was done at 150 rpm for 120 min. The LL samples were taken each 30 min, and the concentration of ammonia was measured.

To determine the ammonia adsorption capacity of the chosen AC, the Freundlich and Langmuir models were used. The amounts of ammonia adsorbed onto AC were calculated from the difference between the initial and the remaining concentrations in the solution. The amount of ammonia adsorbed per gram of AC X/m (mg/g) was given by Equation 2.

The Langmuir isotherm is a useful and simple tool for describing both physical and chemical adsorption. The Langmuir isotherm model (see Equation 3) was developed based on the assumption that adsorption takes place at a fixed number of accessible homogeneous surfaces that are identical, with no transmigration of adsorbates in the plane of the neighbouring surface, leading to the conclusion that the adsorption was monolayer in nature:

$$q_e = \frac{x}{m} = \frac{Q_0 b C_e}{1 + b C_e} \tag{3}$$

In which:

$Q_0$  = the Langmuir monomolecular layer capacity (mg/g);

$b$  = the Langmuir isotherm constant.

The empirically-derived Freundlich isotherm model (see Equation 4) is widely applied to multilayer adsorption, with non-uniform distribution of adsorption heat and affinity over the heterogeneous surface. The Freundlich model shows that the ratio of pollutant adsorbed to the adsorbent is a function of the equilibrium liquid phase solute concentration.

$$q_e = \frac{x}{m} = K C_e^n \tag{4}$$

In which:

$K$  (L/g) and  $n$ : the Freundlich isotherm constants.

The Freundlich coefficient  $K$  represents an indicator of adsorption capacity;  $1/n$  indicates the adsorption intensity, while its reciprocal  $n$  represents the affinity factor for the Freundlich model.

## RESULTS AND DISCUSSION

### Analysis of porosity

Table 1 shows the porosity of samples measured as total mercury intrusion volume, the total pore area, the median pore diameter, and the percentage of pores of a certain size. As can be seen in Table 1, porosities of samples ranged from 0.367 to 0.5389 mL/g, similar than other activated carbon obtained in other works (YAKOUT; SHARAF EL-DEEN, 2016; YAVUZ *et al.*, 2010). Samples activated with HCl show higher total pore area than samples activated with  $H_3PO_4$ . Also, the addition of  $H_2O_2$  to the attack solution produces in both cases (HCl and  $H_3PO_4$ ) an increase, at the same time, of the total pore area and total intrusion volume. However, a reduction in the mesopore volumes is observed.

Figure 1 shows the cumulative intrusion volume versus mercury pressure. Curves of samples B, C and D are representative

of samples consisting of relatively coarse grains. Accordingly, the curves exhibit two distinct parts: the relatively steep initial rise at low pressure, due to void spaces created around the contact points among the grains, and the second rise, due to the pores within the grains. Curve A is representative of samples with a wide distribution of pore sizes.

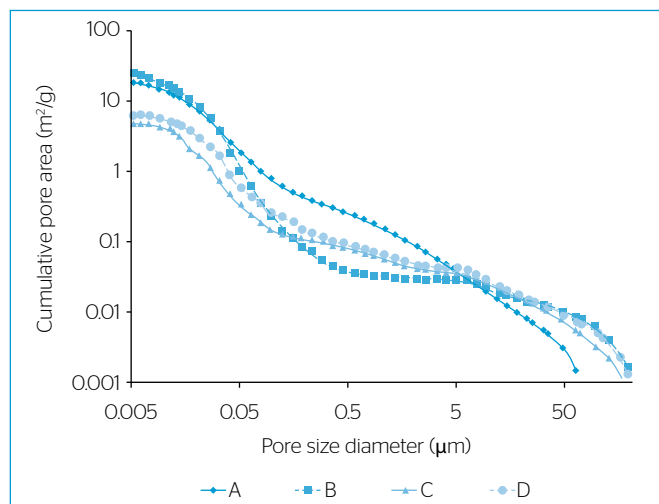
To increase our understanding of the microstructure of samples, a pore size distribution (PSD) study intrusion Log-differential volume (mL/g) versus pore diameter ( $\mu m$ ) was carried out (Figure 2). Two zones can be differentiated in all samples: the small pores range from 0.005 to 0.1  $\mu m$  that are related with the grain pores, and the zone from 10 to 400  $\mu m$ , that correspond with the air void between grains. It should be noted that sample A shows pores in the medium zone (0.1–10  $\mu m$ ).

### Evaluation of activated carbon performance

The four CA developed from coffee waste were studied in order to evaluate which obtains higher levels of contaminant removal in LL. Figure 3 shows the evolution of the concentration of COD over time, when contaminated water was exposed to different AC.

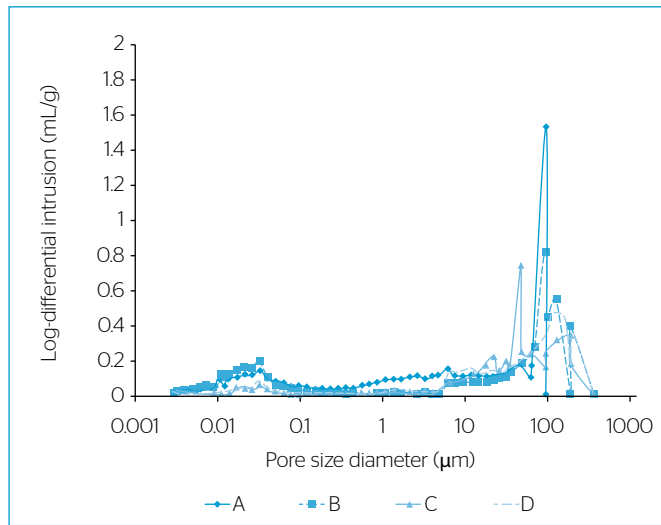
**Table 1** - Total intrusion volume, pore area and average pore diameter and the percentage of pores of a certain size of activated carbon.

	Activated carbon			
	A (HCl)	B (HCl+H <sub>2</sub> O <sub>2</sub> )	C (H <sub>3</sub> PO <sub>4</sub> )	D (H <sub>3</sub> PO <sub>4</sub> +H <sub>2</sub> O <sub>2</sub> )
Total intrusion volume (mL/g)	0.3670	0.5389	0.3888	0.4652
Total pore area (m <sup>2</sup> /g)	20134	28.528	4.856	6.358
Median pore diameter ( $\mu m$ )	3.0103	88.4825	65.3230	77.5385

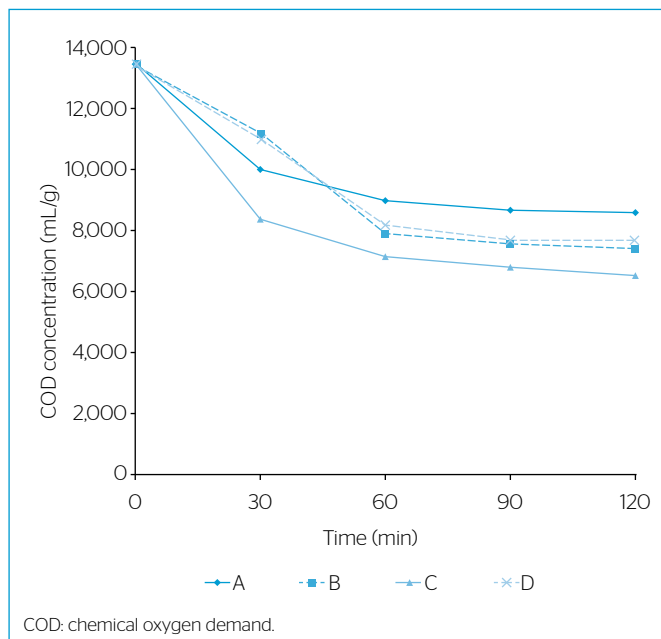


**Figure 1** - Cumulative intrusion volume versus pressure.

It can be observed that the concentration of COD decreased with an increase in the adsorption time, and it can also be seen that the AC which obtained the highest removal of COD was C, followed by B, D and A. Also, considering Equation 1, 51.3, 44.7, 43.0 and 36.1% of elimination were achieved, respectively. Results obtained in the elimination of COD using the AC are in agreement with the literature. There was reported relatively low level of removal of COD using AC (LI *et al.*, 2010). This behaviour could be due to the fact that LL has various constituents with different adsorption affinities. The adsorption sites will be filled first with those constituents of higher adsorption



**Figure 2** - Log-differential intrusion volume versus pore size diameter (pore size distribution).



**Figure 3** - Evolution of chemical oxygen demand concentration of landfill leachate using different activated carbon.

affinity, leaving those with lower adsorption affinity poorly adsorbed (ADINATA; WAN DAUD; AROUA, 2007). In addition, the AC that showed the best performance throughout this study was C.

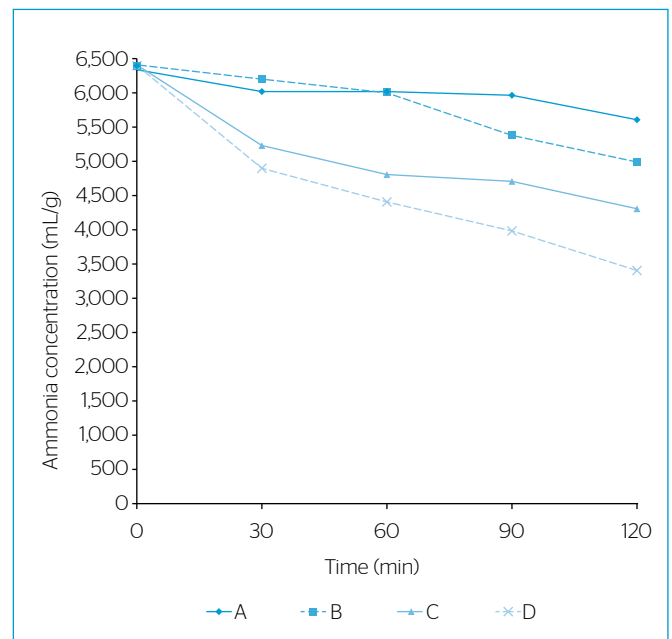
The AC which obtained the highest elimination of ammonia was D, followed by C, B and A, with removal of 46.9, 32.8, 21.9 and 12.5%, respectively (see Figure 4). These results are attributed to the mass-transfer differences of ammonium ions between the liquid and the surface of AC.

As can be seen in Table 1, the median pore diameter for sample B was higher than C and D while it has the lowest removal of COD and NH<sub>3</sub>-N. It was unexpected because the adsorption capacity of COD and NH<sub>3</sub>-N is due to the catalytic oxidation, which causes the widening of micropore to mesopores, thus increasing the adsorption capacity (MOHAMED; MOHAMMADI; NAJAFPOUR, 2010). During pyrolysis process, non-carbon elements such as hydrogen, oxygen and nitrogen released in the form of tars and gases leave a rigid carbon skeleton with a rudimentary pore structure formed from the aromatic compound. Therefore, activation by physico-chemical process enhanced the pore structure of sugarcane-derived activated carbon (FAROOQ *et al.*, 2012).

Figure 5 shows the evolution of chlorine of the LL studied, under the use of different AC.

As can be observed in Figure 5, the AC which obtained the highest elimination of chlorine was C, followed by A, D and B, achieving removal of 66.2, 60.4, 56.1 and 54.2%, respectively.

As shown in Figure 6, the removal of bromine for the various AC was 81%, 47.6, 38.1 and 14.3% for C, D, B and A, respectively. The higher bromine removal for C is in agreement with the results



**Figure 4** - Evolution of ammonia of landfill leachate using different activated carbon.

found in literature (FAROOQ *et al.*, 2012), which reported elimination of 80% with a similar pH that was used in the present study.

Figure 7 depicts the evolution of the concentration of total copper in the LL throughout the adsorption process, using different AC. As can be observed, the AC which obtained the highest elimination of copper was C, followed by A, B and D, achieving removal of 97.5, 96.1, 95.6 and 85.8%, respectively. These results were higher than those obtained by Imamoglu and Tekir (2008), who reported 40% copper elimination when the initial concentration of this metal was similar to

that used in this investigation (200 mg/L). These results could be due to the researchers' application of a lower load of AC.

Also, the results obtained in this study are a bit lower than obtained for Alslaibi *et al.* (2013), who get 100% of elimination of copper using AC produced from olive lump stone waste, with a Brunauer-Emmett-Teller (BET) surface, area, mesopore surface area, total pore volume, and average pore diameter of the prepared AC of 886.72 m<sup>2</sup>/g, 740.66 m<sup>2</sup>/g, 0.507 cm<sup>3</sup>/g, and 4.92 nm, respectively. The differences could be due to the characteristic of the carbon and also to the higher contact time used in the adsorption process, of 4 h.

The maximum adsorption capacity ( $q_e$ ) for copper was 50 mg/g, higher than that obtained by Bouhamed, Elouaer and Bouzid (2012), who used a lower concentration adsorbent in the adsorption processes. The dominating copper removal mechanisms by AC could have been due to cation interaction with surface sites and immobilization of metal together with organic matter being adsorbed to the adsorbent.

Although, from the results, it is possible to observe that the AC which achieved the best elimination percentage of COD and NH-N was D, considering the global results obtained at this step of the investigation, and the AC that achieved the best elimination percentage was C (AC activated with H<sub>3</sub>PO<sub>4</sub>).

It is well known that the adsorption capacity may decrease because of competition by natural organic matter with different organic contaminants through direct site competition and pore entrance blockage (APUL *et al.*, 2013), and also the pore size distribution of AC in relation to the molecular weight of natural organic matter and the target pollutants plays an important role in determining the competitive

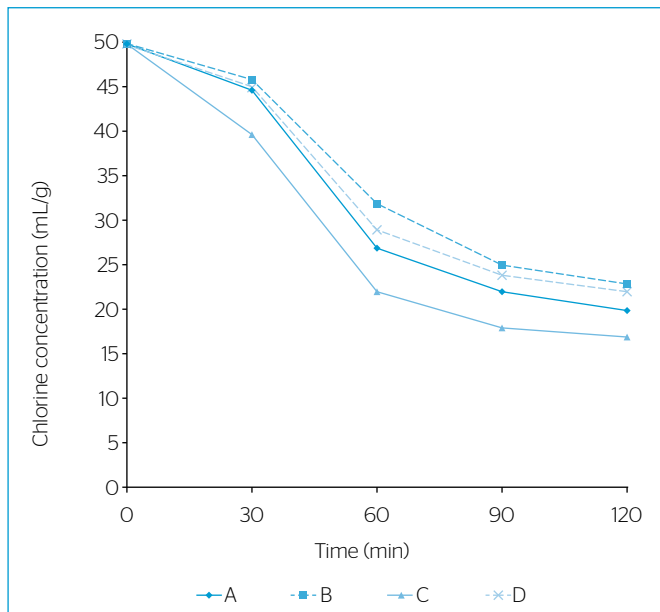


Figure 5 - Evolution of chlorine of landfill leachate using different activated carbon.

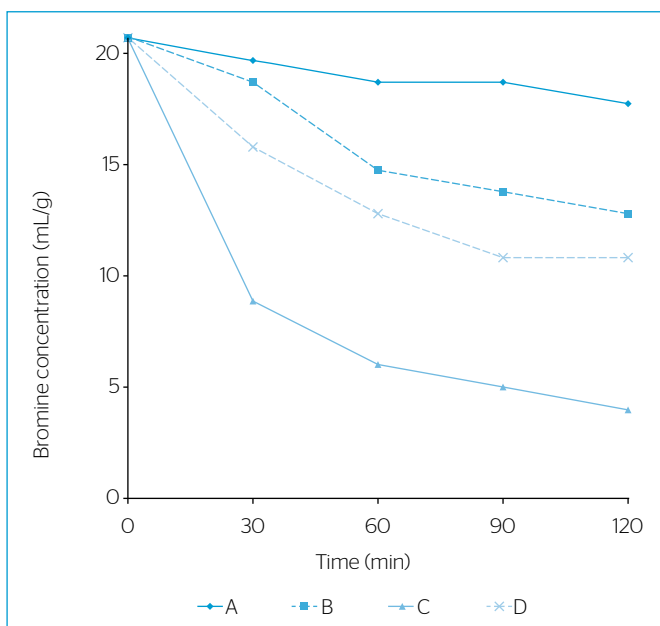


Figure 6 - Evolution of bromine of landfill leachate using different activated carbon.

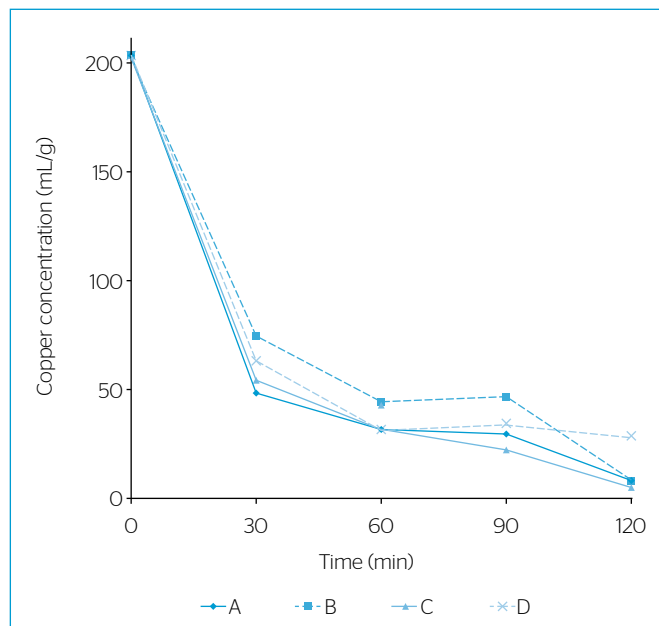


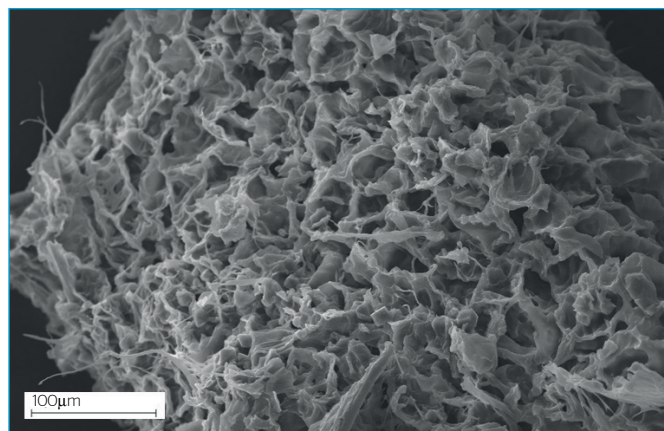
Figure 7 - Evolution of copper of landfill leachate using different activated carbon.

behaviour (NEWCOMBE *et al.*, 2002). However, this issue is going to be studied in a future investigation.

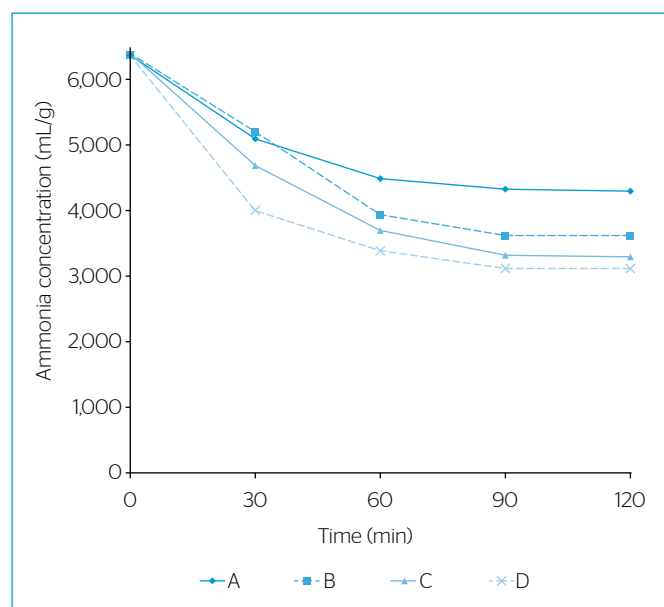
Figure 8 depicts a scanning electron microscope (SEM) image of AC activated with  $H_3PO_4$ . The surface morphology appeared to have very little pores and a fluffy and irregular porous texture with a large and accessible surface area.

### Evaluation of contact time and adsorbent load

Considering the results of the previous section, the AC that obtained the best global results of pollutant removal was C, followed by D. Therefore, this AC was selected for evaluation of the contact time in the adsorption process and the adsorbent load that achieves an adequate removal of ammonia, in order to establish their influence, because ammonia was the parameter that gets the lower elimination. Consequently, different loads of the chosen AC were applied to four beakers filled with 500 mL



**Figure 8** - Scanning electron microscope micrograph of activated carbon.



**Figure 9** - Evolution of ammonia concentration of landfill leachate using different activated carbon loads.

of LL and stirred, taking samples periodically to measure the evolution of ammonia concentration during the adsorption time.

Figure 9 shows the evolution of ammonia concentration present in LL throughout the adsorption process, using different AC loads:

- 3 g/L;
- 5 g/L;
- 7 g/L;
- 9 g/L.

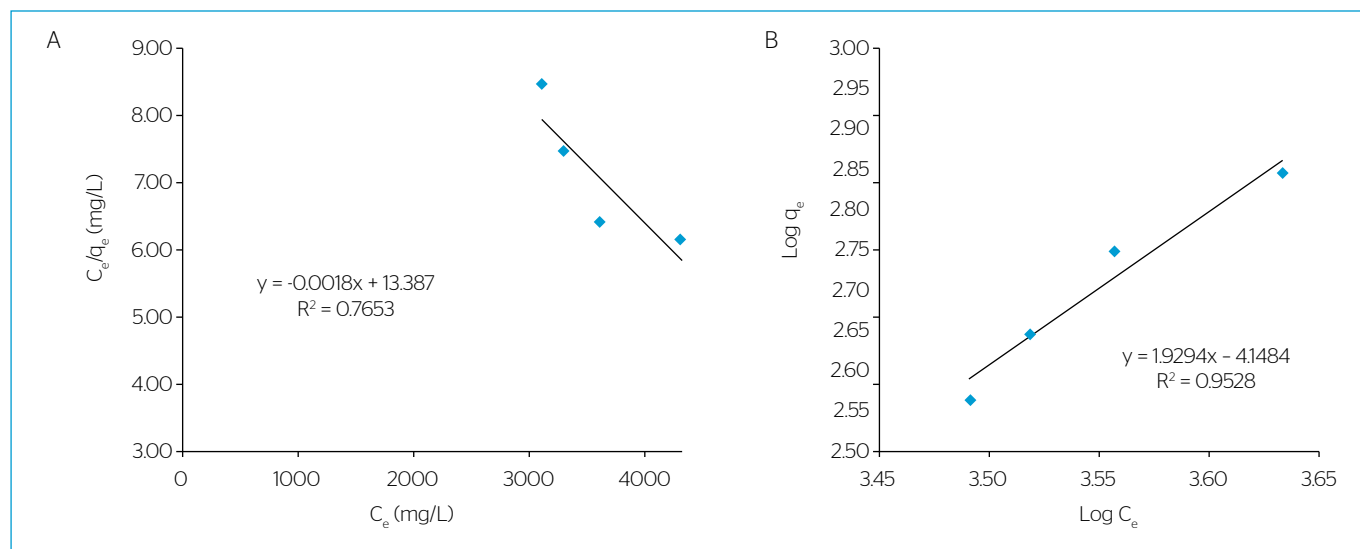
As it was expected, the concentration of ammonia decreased from the beginning of the adsorption process to the end, and it was more pronounced at minute 60 of the experiment and then reached a plateau. This phenomenon is attributed to the reduction of immediate solute adsorption due to the lack of available open sites for pollutant adsorption, which in turn supported film diffusion (HAMEED, 2009).

Also, the results obtained at the end of experimentation indicate that the removal percentage of ammonia increased with an increase in the adsorbent load from 3 to 9 g/L. For a load of 3, 5, 7 and 9 g/L, the ammonia removal was 32.8, 43.8, 48.4 and 51.6%, respectively. These results are explained by the fact that with an increase of adsorbent dosage the available adsorption surface and availability of more adsorption sites increase, which results in more adsorbate attached to the surfaces (EL-ZAHHAR *et al.*, 2013). Although an increase in adsorption occurred with respect to an increase in dosage, the trend of amount adsorbed per unit mass decreased with increasing dosage. In fact, the amount of ammonia adsorbed by mass unit of AC during the batch adsorption process, determined using Equation 2, was 700.0, 560.0, 442.9 and 377.6 mg/g for 3, 5, 7, 9 g/L, respectively.

A higher adsorbent load than the used in this investigation can enhance the probability of collision between adsorbent particles, and therefore create particle aggregation, leading to a decline in the total surface area and an increase in diffusion path length, both of which contribute to the decrease of adsorption (SEMERJIAN, 2010; NAMASIVAYAM; SANGEETHA, 2004; RAO *et al.*, 2008) resulting from high sorbent concentration, which would lead to a decrease in the total surface area of the adsorbent. Similar observations were made by Foo, Lee and Hameed (2013) who established that an increase in the adsorbent dosage over an optimal did not produce an appreciable improvement in the removal of pollutants.

Data of ammonia adsorption to AC were analysed with the Langmuir and Freundlich models (see Figure 10) at 19°C for AC range of 3 to 9 g/L.

As can be seen, the linear form of the Langmuir isotherm does not fit adequately to the experimental data, giving a  $R^2$  lower than 0.9 (0.7653). The model Freundlich equilibrium isotherms fit experimental data adequately, giving  $R^2$  values higher than 0.95 (0.9528). Also  $1/n$  (intensity of the reaction) was 0.5183 and  $k$  was  $7.08 \times 10^{-5}$  L/g, conditions favourable for the adsorption process.



**Figure 10** – (A) Langmuir and (B) Freundlich adsorption isotherm for ammonia in landfill leachate.

The interesting results obtained with coffee waste transformed in AC using phosphoric acid could be due to the fact that this method allows the development of mesopores in the resulting carbon structure (MOLINA-SABIO; RODRÍGUEZ-REINOSO, 2004). Among the activation agents,  $\text{H}_3\text{PO}_4$  offers several advantages: it is non-polluting, it is eliminated by leaching with water, and it is recyclable for further use after water washing (IOANNIDOU; ZABANIOTOU, 2007).  $\text{H}_3\text{PO}_4$  is known to transform upon heating into different polycondensed forms; pyrophosphoric acid at 213°C and metaphosphoric acid around 300°C (SUÁREZ-GARCÍA; MARTÍNEZ-ALONSO; TASCÓN, 2004). The volatilization of  $\text{H}_3\text{PO}_4$  can produce new channels (pores) in the carbon structure, which leads to an increase in the porosity at high temperature. Phosphoric acid activation of precursors results in the formation of highly porous carbon with acid surface groups (PUZIY *et al.*, 2005). This advantage could explain the better results obtained using the carbon activated with  $\text{H}_3\text{PO}_4$ , even considering that it has less total pore area with respect to the other ones.

## CONCLUSIONS

The AC that produced the best global results of elimination of ammonia, COD, copper, bromine and chlorine was the coffee waste that was activated using  $\text{H}_3\text{PO}_4$ , with an impregnation ratio of 1:1. The study carried out using this AC in order to evaluate the effect of adsorption time and the load of adsorbent reveals that the concentration of ammonia suffers a pronounced reduction from the beginning to minute 60 of the experiment. Also, the removal of this pollutant increased with an increase in the adsorbent load; however, the load that maximizes the removal of ammonia per mass unit of adsorbent was 3 g/L. The ammonia adsorption data obtained are successfully modelled by the Freundlich isotherm. The quality of the LL can be improved applying adsorption process using waste obtained from coffee as AC. These results allow consider to coffee waste as a by-product with add value.

## FINANCIAL SOURCE

FONDECYT proyecto N° 11140219.

## REFERENCES

- ADINATA, D.; WAN DAUD, W.M.A.; AROUA, M.K. (2007) Preparation and characterization of activated carbon from palm shell by chemical activation with  $\text{K}_2\text{CO}_3$ . *Bioresource Technology*, v. 98, n. 1, p. 145-9. <https://doi.org/10.1016/j.biortech.2005.11.006>
- ALSLAIBI, T.M.; ABUSTAN, I.; AHMAD, M.A.; FOUL, A.A. (2013) Application of response surface methodology (RSM) for optimization of  $\text{Cu}^{2+}$ ,  $\text{Cd}^{2+}$ ,  $\text{Ni}^{2+}$ ,  $\text{Pb}^{2+}$ ,  $\text{Fe}^{2+}$ , and  $\text{Zn}^{2+}$  removal from aqueous solution using microwaved olive stone activated carbon. *Journal of Chemical Technology and Biotechnology*, v. 88, n. 12, p. 2141-2151. <https://doi.org/10.1002/jctb.4073>
- ALSLAIBI, T.M.; MOGHEIR, Y.K.; AFIFI, S. (2011) Assessment of groundwater quality due to municipal solid waste landfills leachate. *Journal of Environmental Science and Technology*, v. 4, n. 4. <https://doi.org/10.3923/jest.2011.419.436>
- AL-ZABEN, M.I.; MEKHAMER, W.K. (2017) Removal of 4-chloro-2-methyl phenoxy acetic acid pesticide using coffee wastes from aqueous solution. *Arabian Journal of Chemistry*, v. 10, suppl. 2, p. S1523-1529. <https://doi.org/10.1016/j.arabjc.2013.05.003>



- APUL, O.G.; WANG, Q.; ZHOU, Y.; KARANFIL, T. (2013) Adsorption of aromatic organic contaminants by graphene nanosheets: Comparison with carbon nanotubes and activated carbon. *Water Research*, v. 47, n. 4, p. 1648-1654. <https://doi.org/10.1016/j.watres.2012.12.031>
- BOUHAMED, F.; ELOUAER, Z.; BOUZID, J. (2012) Adsorptive removal of copper(II) from aqueous solutions on activated carbon prepared from Tunisian date stones: Equilibrium, kinetics and thermodynamics. *Journal of the Taiwan Institute of Chemical Engineers*, v. 43, n. 5. <http://dx.doi.org/10.1016/j.jtice.2012.02.011>
- BU, L.; WANG, K.; ZHAO, Q.L.; WEI, L.L.; ZHANG, J.; YANG, J.C. (2010) Characterization of dissolved organic matter during landfill leachate treatment by sequencing batch reactor, aeration corrosive cell-Fenton, and granular activated carbon in series. *Journal of Hazardous Materials*, v. 179, n. 1-3, p. 1096-1105. <https://doi.org/10.1016/j.jhazmat.2010.03.118>
- CHING, S.L.; SUFFIAN, Y.M.; AZIZ, H.A.; UMAR, M. (2011) Influence of impregnation ratio on coffee ground activated carbon as landfill leachate adsorbent for removal of total iron and orthophosphate. *Desalination*, v. 279, n. 1-3, p. 225-234. <http://dx.doi.org/10.1016/j.desal.2011.06.011>
- CORTÉS-LORENZO, C.; SIPKEMA, D.; DÍAZ, M.R.; FUENTES, S.; JUAREZ, B.; RODELAS, B.; SMIDT, H.; GONZALEZ-LOPEZ, J. (2014) Microbial community dynamics in a submerged fixed bed bioreactor during biological treatment of saline urban wastewater. *Ecological Engineering*, v. 71, p. 126-132. <http://dx.doi.org/10.1016/j.ecoleng.2014.07.025>
- DE RIDDER, D.J.; VERLIEFDE, A.R.D.; SCHOUTTETEN, K.; VAN DER LINDEN, B.; HEIJMAN, S.G.J.; BEURROIES, I.; DENOYEL, R.; AMY, G.L.; VAN DIJK, J.C. (2013) Relation between interfacial energy and adsorption of organic micropollutants onto activated carbon. *Carbon*, v. 53, p. 153-160. <https://doi.org/10.1016/j.carbon.2012.10.042>
- ELMOUWAHIDI, A.; ZAPATA-BENABITHE, Z.; CARRASCO-MARÍN, F.; MORENO-CASTILLA, C. (2012) Activated carbons from KOH-activation of argan (*Argania spinosa*) seed shells as supercapacitor electrodes. *Bioresource Technology*, v. 111, p. 185-190. <https://doi.org/10.1016/j.biortech.2012.02.010>
- EL-ZAHHAR, A.A.; SHARAF EL-DEEN, S.E.A.; SHEHA, R.R. (2013) Sorption of iron from phosphoric acid solution using polyacrylamide grafted activated carbon. *Journal of Environmental Chemical Engineering*, v. 1, n. 3, p. 209-299.
- FAROOQ, W.; HONG, H.-J.; KIM, E.J.; YANG, J.-W. (2012) Removal of Bromate (BrO<sup>-</sup><sub>3</sub>) from Water using Cationic Surfactant-Modified Powdered Activated Carbon (SM-PAC). *Separation Science and Technology*, v. 47, n. 13, p. 1906-1912.
- FOO, K.Y.; HAMEED, B.H. (2009) An overview of landfill leachate treatment via activated carbon adsorption process. *Journal of Hazardous Materials*, v. 171, n. 1-3, p. 54-60. <https://doi.org/10.1016/j.jhazmat.2009.06.038>
- FOO, K.Y.; LEE, L.K.; HAMEED, B.H. (2013) Batch adsorption of semi-aerobic landfill leachate by granular activated carbon prepared by microwave heating. *Chemical Engineering Journal*, v. 222, p. 259-264. <https://doi.org/10.1016/j.cej.2013.02.032>
- GUO, Y.; ROCKSTRAW, D.A. (2007) Activated carbons prepared from rice hull by one-step phosphoric acid activation. *Microporous and Mesoporous Materials*, v. 100, n. 1, p. 12-19. <http://dx.doi.org/10.1016/j.micromeso.2006.10.006>
- HALIM, A.A.; AZIZ, H.A.; JOHARI, M.A.M.; ARIFFIN, K.S. (2010) Comparison study of ammonia and COD adsorption on zeolite, activated carbon and composite materials in landfill leachate treatment. *Desalination*, v. 262, n. 1-3, p. 31-35. <https://doi.org/10.1016/j.desal.2010.05.036>
- HAMEED, B.H. (2009) Spent tea leaves: A new non-conventional and low-cost adsorbent for removal of basic dye from aqueous solutions. *Journal of Hazardous Materials*, v. 161, n. 2-3, p. 753-759. <https://doi.org/10.1016/j.jhazmat.2008.04.019>
- IMAMOGLU, M.; TEKIR, O. (2008) Removal of copper (II) and lead (II) ions from aqueous solutions by adsorption on activated carbon from a new precursor hazelnut husks. *Desalination*, v. 228, n. 1-3, p. 108-113. <https://doi.org/10.1016/j.desal.2007.08.011>
- IOANNIDOU, O.; ZABANIOTOU, A. (2007) Agricultural residues as precursors for activated carbon production-A review. *Renewable and Sustainable Energy Reviews*, v. 11, n. 9, p. 1966-2005. <https://doi.org/10.1016/j.rser.2006.03.013>
- KALDERIS, D.; KOUTOULAKIS, D.; PARASKEVA, P.; DIAMADOPOULOS, E.; OTAL, E.; DEL VALLE, J.O.; PEREIRA, C.F. (2008) Adsorption of polluting substances on activated carbons prepared from rice husk and sugarcane bagasse. *Chemical Engineering Journal*, v. 144, n. 1, p. 42-50. <https://doi.org/10.1016/j.cej.2008.01.007>
- LI, W.; HUA, T.; ZHOU, Q.; ZHANG, S.; LI, F. (2010) Treatment of stabilized landfill leachate by the combined process of coagulation/flocculation and powder activated carbon adsorption. *Desalination*, v. 264, n. 1-2, p. 56-62. <http://dx.doi.org/10.1016/j.desal.2010.07.004>
- LIM, Y.N.; SHAABAN, M.G.; YIN, C.Y. (2009) Treatment of landfill leachate using palm shell-activated carbon column: Axial dispersion modeling and treatment profile. *Chemical Engineering Journal*, v. 146, n. 1, p. 86-89. <http://dx.doi.org/10.1016/j.cej.2008.05.020>
- LIU, X.; LI, X.-M.; YANG, Q.; YUE, X.; SHEN, T.-T.; ZHENG, W.; LUO, K.; SUN, Y.-H.; ZENG, G.-M. (2012) Landfill leachate pretreatment by coagulation-flocculation process using iron-based coagulants: Optimization by response surface methodology. *Chemical Engineering Journal*, v. 200-202, p. 39-51. <https://doi.org/10.1016/j.cej.2012.06.012>
- MARTINS, R.C.; LOPES, D.V.; QUINA, M.J.; QUINTA-FERREIR, R.M. (2012) Treatment improvement of urban landfill leachates by Fenton-like process using ZVI. *Chemical Engineering Journal*, v. 192, p. 219-225. <http://dx.doi.org/10.1016/j.cej.2012.03.053>
- MOHAMED, A.R.; MOHAMMADI, M.; DARZI, G.N. (2010) Preparation of carbon molecular sieve from lignocellulosic biomass: A review. *Renewable and Sustainable Energy Reviews*, v. 14, n. 6, p. 1591-1599. <http://dx.doi.org/10.1016/j.rser.2010.01.024>
- MOHAN, D.; SINGH, K.P. (2002) Single- and multi-component adsorption of cadmium and zinc using activated carbon derived from bagasse - An agricultural waste. *Water Research*, v. 36, n. 9, p. 2304-2318.

MOLINA-SABIO, M.; RODRÍGUEZ-REINOSO, F. (2004) Role of chemical activation in the development of carbon porosity. *Colloids and Surfaces A: Physicochemical and Engineering Aspects*, v. 241, n. 1-3, p. 15-25. <https://doi.org/10.1016/j.colsurfa.2004.04.007>

NAMASIVAYAM, C.; SANGEETHA, D. (2004) Equilibrium and kinetic studies of adsorption of phosphate onto ZnCl<sub>2</sub> activated coir pith carbon. *Journal of Colloid and Interface Science*, v. 280, n. 2, p. 359-365. <https://doi.org/10.1016/j.jcis.2004.08.015>

NEWCOMBE, G.; MORRISON, J.; HEPPELWHITE, C.J.; KNAPPE, D.R.U. (2002) Simultaneous adsorption of MIB and NOM onto activated carbon II. Competitive effects. *Carbon*, v. 40, n. 12, p. 2147-2156. [http://dx.doi.org/10.1016/S0008-6223\(02\)00098-2](http://dx.doi.org/10.1016/S0008-6223(02)00098-2)

OLIVEIRA, L.C.A.; PEREIRA, E.; GUIMARÃES, I.R.; VALLONE, A.; PEREIRA, M.; MESQUITA, J.P.; SAPAG, K. (2009) Preparation of activated carbons from coffee husks utilizing FeCl<sub>3</sub> and ZnCl<sub>2</sub> as activating agents. *Journal of Hazardous Materials*, v. 165, n. 1-3, p. 87-94. <https://doi.org/10.1016/j.jhazmat.2008.09.064>

PUZIY, A.M.; PODDUBNAYA, O.I.; MARTÍNEZ-ALONSO, A.; SUÁREZ-GARCÍA, F.; TASCÓN, J.M.D. (2005) Surface chemistry of phosphorus-containing carbons of lignocellulosic origin. *Carbon*, v. 43, n. 14, p. 2857-2868. <http://dx.doi.org/10.1016/j.carbon.2005.06.014>

RAO, M.M.; RAO, G.P.C.; SESHIAH, K.; NETTEM, V.C.; WANG, M.C. (2008) Activated carbon from Ceiba pentandra hulls, an agricultural waste, as an adsorbent in the removal of lead and zinc from aqueous solutions. *Waste Management*, v. 28, n. 5, p. 849-858.

REFFAS, A.; BERNARDET, V.; DAVID, B.; REINERT, L.; LEHOCINE, M.B.; DUBOIS, M.; BATISSE, N.; DUCLAUX, L. (2010) Carbons prepared from coffee grounds by H<sub>3</sub>PO<sub>4</sub> activation: Characterization and adsorption of methylene blue and Nylosan Red N-2RBL. *Journal of Hazardous Materials*, v. 175, n. 1-3, p. 779-788. <https://doi.org/10.1016/j.jhazmat.2009.10.076>

SANDOVAL, R.; COOPER, AM.; AYMAR, K.; JAIN, A.; HRISTOVSKI, K. (2011) Removal of arsenic and methylene blue from water by granular activated carbon media impregnated with zirconium dioxide nanoparticles. *Journal of Hazardous Materials*, v. 193, p. 296-303. <https://doi.org/10.1016/j.jhazmat.2011.07.061>

SEMERJIAN, L. (2010) Equilibrium and kinetics of cadmium adsorption from aqueous solutions using untreated Pinus halepensis sawdust. *Journal of Hazardous Materials*, v. 173, n. 1-3, p. 236-242. <https://doi.org/10.1016/j.jhazmat.2009.08.074>

SUÁREZ-GARCÍA, F.; MARTÍNEZ-ALONSO, A.; TASCÓN, J.M.D. (2004) Activated carbon fibers from Nomex by chemical activation with phosphoric acid. *Carbon*, v. 42, n. 8-9, p. 1419-1426. <https://doi.org/10.1016/j.carbon.2003.11.011>

WANG, X.; CHEN, S.; GU, X.; WANG, K. (2009) Pilot study on the advanced treatment of landfill leachate using a combined coagulation, fenton oxidation and biological aerated filter process. *Waste Management*, v. 29, n. 4, p. 1354-1358. <https://doi.org/10.1016/j.wasman.2008.10.006>

XIE, Z.; WANG, Z.; WANG, Q.; ZHU, C.; WU, Z. (2014) An anaerobic dynamic membrane bioreactor (AnDMBR) for landfill leachate treatment: Performance and microbial community identification. *Bioresource Technology*, v. 161C, p. 29-39. <http://dx.doi.org/10.1016/j.biortech.2014.03.014>

YAKOUT, S.M.; SHARAF EL-DEEN, G. (2016) Characterization of activated carbon prepared by phosphoric acid activation of olive stones. *Arabian Journal of Chemistry*, v. 9, supl. 2, p. S1155-S1161. <https://doi.org/10.1016/j.arabjc.2011.12.002>

YAVUZ, R.; AKYILDIZ, H.; KARATEPE, N.; ÇETINKAYA, E. (2010) Influence of preparation conditions on porous structures of olive stone activated by H<sub>3</sub>PO<sub>4</sub>. *Fuel Processing Technology*, v. 91, n. 1, p. 80-87. <https://doi.org/10.1016/j.fuproc.2009.08.018>

