



# Psychological Biomarkers and Fibrosis: An Innovative Approach to Non-alcoholic Fatty Liver Disease

Jesús Funuyet-Salas<sup>1\*</sup>, María Ángeles Pérez-San-Gregorio<sup>1</sup>, Agustín Martín-Rodríguez<sup>1</sup> and Manuel Romero-Gómez<sup>2</sup>

<sup>1</sup> Department of Personality, Assessment, and Psychological Treatment, Faculty of Psychology, University of Seville, Seville, Spain, <sup>2</sup> Unit for Clinical Management (UCM) Digestive Diseases and Ciberehd, Virgen del Rocío University Hospital, Institute of Biomedicine of Seville, University of Seville, Seville, Spain

## OPEN ACCESS

### Edited by:

Oscar Escribano,  
Complutense University of  
Madrid, Spain

### Reviewed by:

Kunkai Su,  
Zhejiang University, China  
Pedro Rodrigues,  
Biodonostia Health Research Institute  
(IIS Biodonostia), Spain

### \*Correspondence:

Jesús Funuyet-Salas  
jfunuyet1@us.es

### Specialty section:

This article was submitted to  
Gastroenterology,  
a section of the journal  
Frontiers in Medicine

**Received:** 20 July 2020

**Accepted:** 09 September 2020

**Published:** 22 October 2020

### Citation:

Funuyet-Salas J, Pérez-San-Gregorio  
MÁ, Martín-Rodríguez A and  
Romero-Gómez M (2020)  
Psychological Biomarkers and  
Fibrosis: An Innovative Approach to  
Non-alcoholic Fatty Liver Disease.  
*Front. Med.* 7:585425.  
doi: 10.3389/fmed.2020.585425

**Background:** It is unknown how perceived social support and the progression of liver damage influence the psychosocial profile of patients with non-alcoholic fatty liver disease (NAFLD). In the present study, we therefore investigated which biomarkers influence the quality of life, mental health, and coping strategies of NAFLD patients.

**Methods:** Quality of life (SF-12 and CLDQ-NAFLD), mental health (HADS and BDI-II), and coping strategies (COPE-28) were evaluated by high or low perceived social support (MSPSS) and the presence of non-alcoholic steatohepatitis (NASH) and significant fibrosis in 492 biopsy-proven NAFLD patients. The results were compared with quality of life normality tables for the general Spanish population. We also determined whether liver histology and biopsychosocial variables predicted participants' quality of life.

**Results:** Interactive effects were found in vitality ( $p = 0.05$ ), activity ( $p = 0.005$ ), anxiety ( $p = 0.04$ ), and denial ( $p = 0.04$ ), with NASH patients showing a higher-risk biopsychosocial profile when they perceived less social support. Furthermore, patients with low perceived social support showed lower quality of life, worse mental health, and more maladaptive coping than those with high perceived social support, regardless of NASH presence. Patients with significant fibrosis showed lower quality of life compared to those without or the general Spanish population. Patients with significant fibrosis also reported worse mental health and more maladaptive coping. Lastly, significant fibrosis, female sex, greater anxiety and depressive symptoms, and worse physical and mental health-related quality of life were found to be independent determinants of worse disease-specific quality of life in these patients.

**Conclusions:** Low perceived social support, significant fibrosis, and female sex were independently associated with a higher-risk psychosocial profile in NAFLD. These findings support the role of psychological biomarkers based on quality of life, mental health, and coping strategies in the management of these patients and suggest the potential benefits of a psychological intervention.

**Keywords:** NAFLD, fibrosis, quality of life, mental health, coping, perceived social support

## INTRODUCTION

Non-alcoholic fatty liver disease (NAFLD) causes a stronger negative impact on patients' quality of life (QoL) than do viral, alcoholic, autoimmune, or cholestatic liver diseases (1, 2), especially impairing physical functioning or the ability to perform daily activities (3–6). Mental health is also affected by an increase in anxiety and depressive symptoms (7). Similarly, although coping strategies have not been studied in NAFLD, maladaptive coping, such as denial of the disease, anger or getting upset after the diagnosis, disengagement, or giving up (8), is often found among chronic liver patients. The influence of perceived social support on these variables has not been approached. However, in chronic liver diseases, such as hepatitis B or C, satisfactory support implies improved patient progress and recovery (9, 10) and a decrease in the frequency and intensity of depressive symptoms (11).

The fibrosis stage is the main predictor of mortality associated with NAFLD (12), although the results are contradictory. Some studies have found worse QoL in patients with non-alcoholic steatohepatitis (NASH) and advanced fibrosis than those with NAFLD without advanced fibrosis, with cirrhotic patients complaining of the most decline in their QoL of all severity levels (2, 4, 13). However, Huber et al. (14) did not find any significant effect of fibrosis stage on QoL. In addition, the relationship between fibrosis and mental health in NAFLD patients is not clear either. Several studies have found an association between the presence of fibrosis and anxiety and depressive symptoms (7, 15, 16), while Kim et al. (17) found no relationship. Furthermore, female sex has been associated with a worse physical and mental QoL than does male sex (2, 18).

In view of the shortage of psychological studies in NAFLD, we decided to analyze the differences in QoL, mental health, and the coping strategies of patients with the absence or presence of NASH by perceived social support (high or low). We also studied the influence of liver disease severity levels on these variables using data from the general Spanish population to compare QoL. Finally, we determined whether certain histological and biopsychosocial variables predicted participants' QoL. We hypothesized that patients would have worse QoL, more anxiety and depressive symptoms, and more maladaptive coping when they have low perceived social support, NASH, or significant fibrosis. Furthermore, we hypothesized that the presence of determinants of liver damage (moderate or severe steatosis, lobular inflammation, hepatocellular ballooning, and significant fibrosis) and a higher-risk biopsychosocial profile (female sex, older age, presence of obesity, worse physical and mental health-related QoL, greater anxiety and depressive symptoms, maladaptive coping strategies, and low perceived social support) would be associated with a greater negative impact on the disease-specific QoL of NAFLD patients.

## MATERIALS AND METHODS

### Participants

This research was approved by the Ethics Committee of the Virgen del Rocío University Hospital of Seville. All patients gave

their informed consent for participation, and the research was conducted in accordance with the 1975 Declaration of Helsinki guidelines of good practice. As shown in **Figure 1**, we selected a group of 492 patients with biopsy-proven NAFLD (290 men and 202 women) with a mean age of  $54.90 \pm 11.74$  years. The sociodemographic characteristics of the groups are shown in **Supplementary Tables 1, 2**. Data from the general Spanish population were also considered for QoL (SF-12) (19).

### Measures

#### The 12-Item Short-Form Health Survey (SF-12v.2)

This scale comprised 12 items with either three- or five-point Likert-type scales (20, 21). It evaluates the following eight dimensions of health-related QoL: physical functioning, role-physical, bodily pain, general health, vitality, social functioning, role-emotional, and mental health. It also calculates two summary measures using Quality Metric Health Outcomes™ Scoring Software 5.0: physical component summary (PCS) and mental component summary (MCS). All scores ranged from 0 (worst state of health) to 100 (best state of health). Higher scores indicate better health-related QoL. In our sample, the Cronbach's alpha for the dimensions varied from 0.72 to 0.95. The Cronbach's alpha values for the PCS and MCS were 0.92 and 0.88, respectively (20).

#### Chronic Liver Disease Questionnaire—Non-alcoholic Fatty Liver Disease

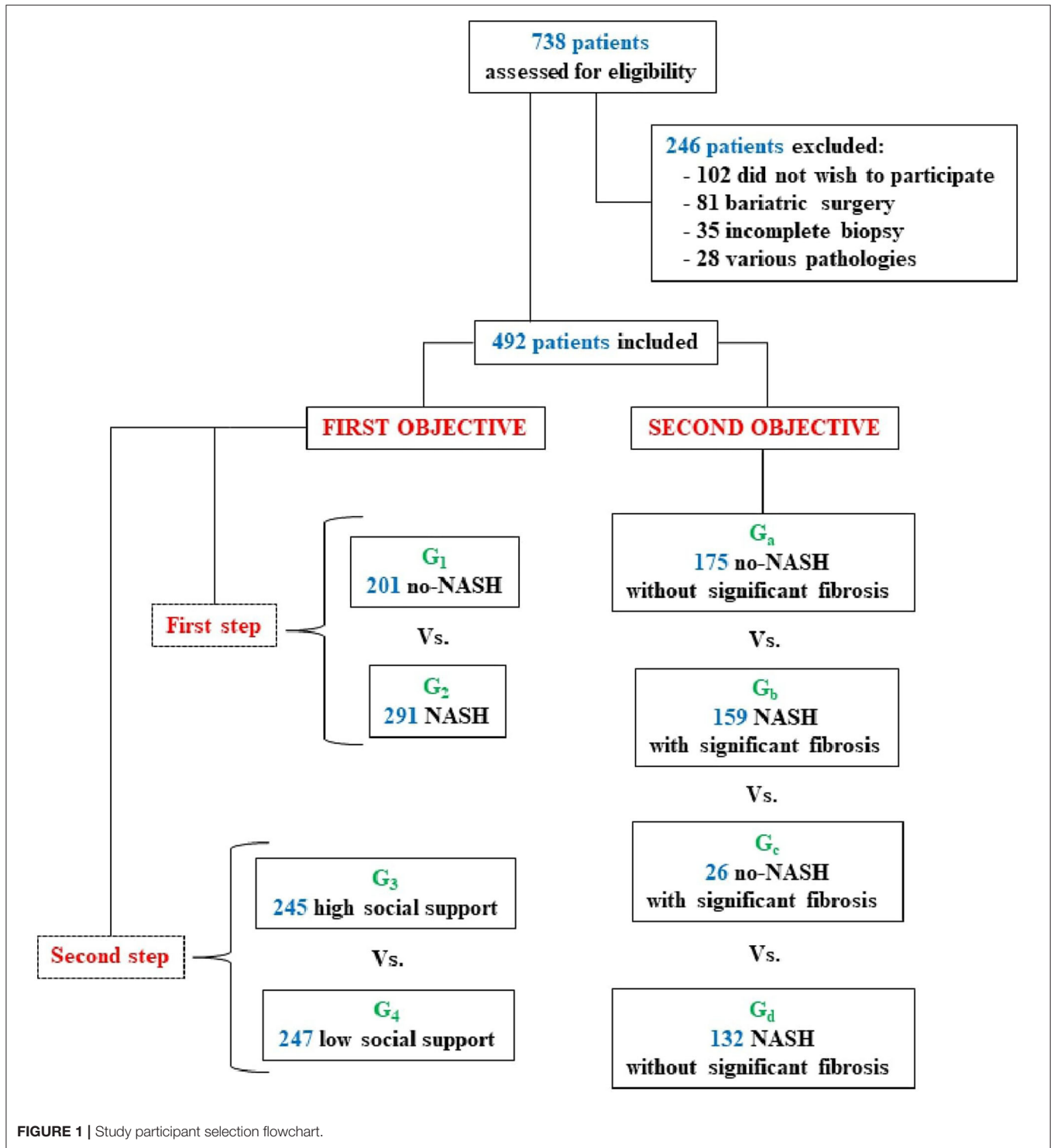
The Chronic Liver Disease Questionnaire—Non-alcoholic Fatty Liver Disease (CLDQ-NAFLD) comprised 36 items rated on either a one- or a seven-point Likert-type scale (22). It evaluates specific QoL for NAFLD and NASH patients. It provides information referring to the total score on the scale and six domains: abdominal symptoms, activity, emotional, fatigue, systemic symptoms, and worry. Higher scores indicate better disease-specific QoL. In our sample, the Cronbach's alpha was 0.94 for the total instrument and from 0.68 to 0.89 for the domains.

#### Hospital Anxiety and Depression Scale

The Hospital Anxiety and Depression Scale (HADS) is made up of 14 items, seven on the anxiety subscale and seven on the depression subscale, with either zero- or three-point Likert-type scales (23). It evaluates anxiety and depressive symptoms. The test provides two total scores, one for anxiety and the other for depression. Scores range from 0 to 21 for each subscale. Higher scores indicate more anxiety and depressive symptoms. We used the Spanish version of this instrument (24). In our sample, the Cronbach's alpha was 0.81 for the anxiety subscale and 0.87 for the depression subscale.

#### Beck Depression Inventory—II

The Beck Depression Inventory—II (BDI-II) has 21 items answered on a four-point (0–3) scale, except for items 16 and 18, which have seven categories (25). It evaluates the severity of depression during the past 2 weeks. A total score of 0–63 is found. Higher scores show more severe depression. We used the Spanish



version of this instrument (26). In our sample, the Cronbach's alpha was 0.91.

**The Brief COPE**

The Brief COPE (COPE-28) comprised 28 items with either zero- or three-point Likert-type scales (27). It evaluates 14

coping strategies: active coping, planning, instrumental support, emotional support, self-distraction, venting, disengagement, positive reframing, denial, acceptance, religion, substance use, humor, and self-blame. We used the Spanish version of this instrument (28). On all the subscales, higher scores indicate more use of the coping strategy. In our sample, the Cronbach's

alpha was 0.80–0.99 on the different subscales, except for positive reframing which was 0.45.

### Multidimensional Scale of Perceived Social Support

The Multidimensional Scale of Perceived Social Support (MSPSS) consists of 12 items with either a one- or a seven-point Likert-type scale (29). It evaluates perceived support from three different sources: family, friends, and partner or other significant persons. It also provides information on the total scale. We used the Spanish version of this instrument (30). Higher scores show more perceived social support. In our sample, the Cronbach's alpha was 0.94 for the total instrument and was 0.95–0.99 for the various dimensions of social support.

### Procedure

The 492 study patients were selected from 12 hospitals in six autonomous regions of Spain (Andalusia, Madrid, Castile and Leon, Catalonia, Cantabria, and Valencia). The same procedure was followed for all patients in the study. The researcher responsible at each participating hospital was contacted, and this contact provided a list of candidate NAFLD patients for the study. Then, these patients were phoned to make an appointment for the evaluation. All patients were evaluated by the same psychologist using the same psychological measures, always applied in the same order: a psychosocial interview and the SF-12, CLDQ-NAFLD, HADS, BDI-II, COPE-28, and MSPSS instruments. The inclusion criteria were as follows: (a) over 18 years of age; (b) informed consent; (c) no difficulties in understanding the evaluation instruments; (d) no severe or disabling psychopathological condition; and (e) diagnosed with biopsy-proven NAFLD. As all of the patients had undergone liver biopsy, they could be classified into groups by the hepatologist's criteria ( $G_1$  = absence of NASH and  $G_2$  = presence of NASH) and liver severity levels based on NASH and significant fibrosis (F2, F3, and F4) ( $G_a$  = no-NASH without significant fibrosis,  $G_b$  = NASH with significant fibrosis,  $G_c$  = no-NASH with significant fibrosis, and  $G_d$  = NASH without significant fibrosis) (Figure 1). Patients were classified as NASH or not after clinical assessment by the hepatologist, who provided a histological diagnosis by liver biopsy based on hepatocellular ballooning and lobular inflammation levels. The two perceived social support groups ( $G_3$  = high and  $G_4$  = low) were formed in two stages: firstly, each patient's total score on the MSPSS scale, which varied from 1 to 7, where higher scores show greater social support, was taken. These scores were then arranged in ascending order and the percentages accumulated were used to divide the sample into two groups at the 50.2 percentile ( $G_3$  = high and  $G_4$  = low) (Figure 1). Finally, to determine how liver histology and biopsychosocial variables predicted disease-specific QoL, the following histological variables provided by liver biopsy were analyzed: hepatic steatosis severity (a mild group of steatosis patients with 6–33% and a moderate-to-severe group with steatosis equal to or more than 34%); lobular inflammation (absence or presence depending on the number of foci per HPE, from none to more than one); hepatocellular ballooning (absence or presence based on the existence of ballooned cells); and significant fibrosis (absence, F0–F1, or presence, F2–F4,

depending on the fibrosis stage). The biopsychosocial variables analyzed were sex (male or female), age, obesity, physical and mental health-related QoL (PCS and MCS; SF-12), anxiety and depressive symptoms (total anxiety and total depression; HADS, BDI-II), coping strategies (scores for all 14 coping strategies; COPE-28), and perceived social support (total scale score; MSPSS).

### Statistical Analysis

Pearson's chi-square test was applied to the sociodemographic variables to compare categorical variables (sex, marital status, education, and employment) and the *t*-test for independent samples or a one-way ANOVA (Welch's *U*) with Games–Howell *post hoc* pairwise analysis to compare the age variable.

A  $2 \times 2$  factorial ANOVA (Snedecor's *F*) was performed to evaluate the influence on QoL (SF-12 and CLDQ-NAFLD), mental health (HADS and BDI-II), and coping strategies (COPE-28) exerted by NASH (absence or presence) and perceived social support (high or low). And to compare these variables (QoL, mental health, and coping strategies) between the NAFLD severity groups, a one-way ANOVA (Snedecor's *F* or Welch's *U*) as an omnibus test was computed depending on whether or not they met the assumption of homoscedasticity. For *post hoc* multiple comparisons, Tukey's honestly significant difference or the Games–Howell test was applied. The *t*-test for independent samples was also applied for comparison with the general Spanish population. Cohen's *d* (for continuous variables) and *w* (for categorical variables) were computed as effect size indexes.

Binary logistic regression analysis was used to determine the contribution of the histological and biopsychosocial variables to disease-specific QoL. The independent variables in the regression model were hepatic steatosis severity, lobular inflammation, hepatocellular ballooning, significant fibrosis, sex, age, obesity, PCS (SF-12), MCS (SF-12), total anxiety (HADS), total depression (HADS and BDI-II), the 14 coping strategies measured with the COPE-28, and total perceived social support (MSPSS). For categorical variables, reference groups were formed for patients with moderate to severe steatosis, presence of lobular inflammation, hepatocellular ballooning or significant fibrosis, female sex, and the presence of obesity. The total score on the CLDQ-NAFLD questionnaire (total CLDQ-NAFLD) was analyzed as the dependent variable. This score was arranged in ascending order and the cumulative percentages were used to divide the sample into two groups (better and worse QoL) at the 50th percentile. The results for binary logistic regression were reported as odds ratios (OR) at 95% confidence intervals. A two-sided *p*-value < 0.05 was considered statistically significant. All the data were analyzed with the SPSS Statistics v.25 program.

## RESULTS

### Sociodemographic Variables

There were no important between-group differences (null or small effect sizes) in NASH, social support, or severity (Supplementary Tables 1, 2). The only difference in severity was that age was higher in  $G_b$  (NASH with significant fibrosis) than in  $G_d$  (NASH without significant fibrosis;  $p < 0.001$ ,  $d = 0.557$ ). Age

**TABLE 1** | Quality of life (SF-12) of non-alcoholic fatty liver disease (NAFLD) patients based on non-alcoholic steatohepatitis (NASH; absence and presence) and social support level (high and low) variables.

SF-12	NASH: $M^a$ (SD)		Social support level: $M^a$ (SD)		Main effects		Interaction effects
	Absence ( $G_1$ ) $n = 201$	Presence ( $G_2$ ) $n = 291$	High ( $G_3$ ): $n = 245$	Low ( $G_4$ ): $n = 247$	NASH: $F_{(1,488)}$ $p$ ( $d^b$ )	Social support level: $F_{(1,488)}$ $p$ ( $d^b$ )	$F_{(1,488)}$ ( $p$ )
Physical functioning	76.85 (33.03)	65.71 (33.09)	81.73 (33.34)	60.83 (33.79)	13.53 <0.001 (0.337 S)	47.55 <0.001 (0.623 M)	3.73 (0.06)
Role-physical	81.53 (28.50)	73.21 (28.49)	86.67 (28.80)	68.08 (29.07)	10.17 0.002 (0.292 S)	50.76 <0.001 (0.642 M)	2.97 (0.09)
Bodily pain	79.18 (27.22)	70.86 (27.29)	81.43 (27.55)	68.61 (27.82)	11.09 0.001 (0.304 S)	26.33 <0.001 (0.463 S)	1.36 (0.24)
General health	52.06 (24.24)	46.72 (24.22)	56.77 (24.57)	42 (24.83)	5.74 0.02 (0.220 S)	43.97 <0.001 (0.598 M)	1.73 (0.19)
Vitality	62.71 (25.80)	52.24 (25.76)	66.35 (25.98)	48.59 (26.40)	19.62 <0.001 (0.406 S)	56.45 <0.001 (0.678 M)	3.98 (0.05)
Social functioning	88.85 (21.97)	85.57 (22.00)	94.43 (22.23)	79.99 (22.47)	2.63 0.11 (0.149 N)	51.01 <0.001 (0.646 M)	1.80 (0.18)
Role-emotional	83.02 (24.53)	78.74 (24.39)	89.31 (24.73)	72.45 (24.99)	3.65 0.06 (0.175 N)	56.45 <0.001 (0.678 M)	1.36 (0.24)
Mental health	73.00 (21.27)	68.01 (21.15)	77.60 (21.44)	63.41 (21.69)	6.57 0.01 (0.235 S)	53.07 <0.001 (0.658 M)	2.35 (0.13)
PCS	48.89 (10.21)	45.67 (10.06)	49.94 (10.17)	44.63 (10.37)	11.98 0.001 (0.318 S)	32.57 <0.001 (0.517 M)	2.51 (0.11)
MCS	52.26 (9.36)	50.57 (9.38)	54.61 (9.55)	48.21 (9.59)	3.86 0.05 (0.180 N)	55.44 <0.001 (0.669 M)	1.64 (0.20)

A 2 × 2 factorial ANOVA (Snedecor's F) was applied.

SF-12, 12-Item Short-Form Health Survey; PCS, physical component summary; MCS, mental component summary.

<sup>a</sup>Higher scores show better quality of life.

<sup>b</sup>Effect sizes: N, null; S, small; M, medium.

was also higher in  $G_c$  (no-NASH with significant fibrosis) than in  $G_a$  (no-NASH without significant fibrosis;  $p = 0.003$ ,  $d = -0.725$ ) or  $G_d$  (NASH without significant fibrosis;  $p = 0.001$ ,  $d = 0.778$ ) (Supplementary Table 2).

### Influence of NASH and Social Support Variables on QoL, Mental Health, and Coping Strategies

The results are shown in Table 1 (SF-12), Table 2 (CLDQ-NAFLD), Table 3 (HADS and BDI-II), and Table 4 (COPE-28). Four statistically significant interactive effects were found: vitality ( $p = 0.05$ ; Table 1), activity ( $p = 0.005$ ; Table 2), anxiety ( $p = 0.04$ ; Table 3), and denial ( $p = 0.04$ ; Table 4). As observed in Table 5 and Figure 2, the simple effects showed that NASH patients had less vitality ( $p < 0.001$ ,  $d = 0.873$ ), less activity ( $p < 0.001$ ,  $d = 0.805$ ), more anxiety ( $p < 0.001$ ,  $d = -0.786$ ), and

more denial ( $p < 0.001$ ,  $d = -0.638$ ) when they perceived less social support. However, in patients without NASH, there were no differences depending on perceived social support, except in the vitality variable ( $p < 0.001$ ,  $d = 0.505$ ), which was lower in patients with low social support. Moreover, when social support was high, there were no differences between patients with and without NASH, but when social support was low, patients with NASH had lower scores in vitality ( $p < 0.001$ ,  $d = 0.590$ ) and activity ( $p < 0.001$ ,  $d = 0.600$ ).

The main effects by relevant effect sizes (medium and large) were that, regardless of whether NASH was present or not, patients with low social support had worse QoL (SF-12 and CLDQ-NAFLD) than those with high social support on most of the variables, except bodily pain, abdominal symptoms, and worry, in which there were no differences between the two groups (Tables 1, 2). In mental health (HADS and BDI-II), patients with low social support had higher scores in anxiety



**TABLE 2 |** Quality of life (CLDQ-NAFLD) of non-alcoholic fatty liver disease (NAFLD) patients based on non-alcoholic steatohepatitis (NASH; absence and presence) and social support level (high and low) variables.

CLDQ-NAFLD	NASH: M <sup>a</sup> (SD)		Social support level: M <sup>a</sup> (SD)		Main effects		Interaction effects
	Absence (G <sub>1</sub> ): n = 201	Presence (G <sub>2</sub> ): n = 291	High (G <sub>3</sub> ): n = 245	Low (G <sub>4</sub> ): n = 247	NASH: F <sub>(1,488)</sub> p (d <sup>b</sup> )	Social support level: F <sub>(1,488)</sub> p (d <sup>b</sup> )	F <sub>(1,488)</sub> (p)
Abdominal symptoms	5.64 (1.42)	5.51 (1.53)	5.88 (1.41)	5.28 (1.57)	0.91 0.34 (0.088 N)	19.36 <0.001 (0.402 S)	0.201 (0.65)
Activity	5.86 (1.28)	5.45 (1.19)	5.99 (1.25)	5.33 (1.26)	13.32 <0.001 (0.332 S)	33.92 <0.001 (0.526 M)	7.97 (0.005)
Emotional	5.90 (0.99)	5.62 (1.02)	6.17 (0.94)	5.35 (0.94)	9.14 0.003 (0.279 S)	82.23 <0.001 (0.872 L)	3.34 (0.07)
Fatigue	5.55 (1.13)	5.13 (1.19)	5.86 (1.25)	4.82 (1.26)	14.60 <0.001 (0.362 S)	89.58 <0.001 (0.829 L)	2.61 (0.11)
Systemic symptoms	5.98 (0.85)	5.64 (0.85)	6.10 (0.94)	5.52 (0.94)	17.60 <0.001 (0.400 S)	47.72 <0.001 (0.617 M)	1.04 (0.31)
Worry	6.30 (0.99)	6.10 (1.02)	6.39 (0.94)	6.00 (0.94)	5.22 0.02 (0.199 N)	19.42 <0.001 (0.415 S)	0.012 (0.91)
Total	5.87 (0.85)	5.58 (0.85)	6.06 (0.78)	5.38 (0.78)	14.54 <0.001 (0.341 S)	75.10 <0.001 (0.872 L)	3.04 (0.08)

A 2 × 2 factorial ANOVA (Snedecor's F) was applied.

<sup>a</sup>Higher scores show better quality of life.

<sup>b</sup>Effect sizes: N, null; S, small; M, medium; L, large.

**TABLE 3 |** Mental health (HADS and BDI-II) of non-alcoholic fatty liver disease (NAFLD) patients based on non-alcoholic steatohepatitis (NASH; absence and presence) and social support level (high and low) variables.

	NASH: M <sup>a</sup> (SD)		Social support level: M <sup>a</sup> (SD)		Main effects		Interaction effects
	Absence (G <sub>1</sub> ): n = 201	Presence (G <sub>2</sub> ): n = 291	High (G <sub>3</sub> ): n = 245	Low (G <sub>4</sub> ): n = 247	NASH: F <sub>(1,488)</sub> p (d <sup>b</sup> )	Social support level: F <sub>(1,488)</sub> p (d <sup>b</sup> )	F <sub>(1,488)</sub> (p)
<b>HADS</b>							
Total anxiety	3.20 (3.40)	3.78 (3.41)	2.46 (3.44)	4.52 (3.46)	3.29 0.07 (-0.170 N)	42.52 <0.001 (-0.597 M)	4.079 (0.04)
Total depression	2.26 (3.26)	3.09 (3.24)	1.22 (3.29)	4.13 (3.30)	7.66 0.006 (-0.255 S)	94.63 <0.001 (-0.883 L)	2.916 (0.09)
<b>BDI-II</b>							
Total depression	6.17 (6.95)	7.58 (6.99)	3.38 (7.04)	10.38 (7.07)	4.89 0.03 (-0.202 S)	12.69 <0.001 (-0.992 L)	2.272 (0.13)

A 2 × 2 factorial ANOVA (Snedecor's F) was applied.

<sup>a</sup>Higher scores show worse mental health.

<sup>b</sup>Effect sizes: N, null; S, small; M, medium; L, large.

( $p < 0.001$ ,  $d = -0.597$ ) and depressive symptoms measured with both HADS ( $p < 0.001$ ,  $d = -0.883$ ) and BDI-II ( $p < 0.001$ ,  $d = -0.992$ ) (Table 3). And in coping strategies (COPE-28), by

relevant effect sizes (medium), patients with low social support scored higher in disengagement ( $p < 0.001$ ,  $d = -0.702$ ) and lower in active coping ( $p < 0.001$ ,  $d = 0.756$ ), planning

**TABLE 4 |** Coping strategies (COPE-28) of non-alcoholic fatty liver disease (NAFLD) patients based on non-alcoholic steatohepatitis (NASH; absence and presence) and social support level (high and low) variables.

COPE-28	NASH: <i>M<sup>a</sup></i> (SD)		Social support level: <i>M<sup>a</sup></i> (SD)		Main effects		Interaction effects
	Absence ( <i>G<sub>1</sub></i> ): <i>n</i> = 201	Presence ( <i>G<sub>2</sub></i> ): <i>n</i> = 291	High ( <i>G<sub>3</sub></i> ): <i>n</i> = 245	Low ( <i>G<sub>4</sub></i> ): <i>n</i> = 247	NASH: <i>F</i> <sub>(1,488)</sub> <i>p</i> ( <i>d<sup>b</sup></i> )	Social support level: <i>F</i> <sub>(1,488)</sub> <i>p</i> ( <i>d<sup>b</sup></i> )	<i>F</i> <sub>(1,488)</sub> ( <i>p</i> )
Active coping	1.96 (0.71)	1.87 (0.68)	2.21 (0.78)	1.62 (0.78)	1.95 0.16 (0.129 N)	74.35 <0.001 (0.756 M)	0.10 (0.92)
Planning	1.29 (0.99)	1.34 (1.02)	1.63 (0.94)	1.01 (1.10)	0.27 0.60 (-0.050 N)	45.29 <0.001 (0.606 M)	1.35 (0.25)
Instrumental support	1.15 (0.99)	1.14 (1.02)	1.40 (0.94)	0.88 (0.94)	0.02 0.88 (0.010 N)	33.89 <0.001 (0.553 M)	0.33 (0.56)
Emotional support	1.03 (0.99)	1.10 (1.02)	1.33 (0.94)	0.79 (0.94)	0.56 0.45 (-0.070 N)	35.66 <0.001 (0.574 M)	0.10 (0.75)
Self-distraction	0.67 (0.99)	0.82 (1.02)	0.68 (0.94)	0.80 (0.94)	2.53 0.11 (-0.149 N)	1.83 0.18 (-0.128 N)	1.23 (0.27)
Venting	0.98 (0.99)	1.02 (1.02)	1.17 (1.09)	0.83 (1.10)	0.15 0.70 (-0.040 N)	13.55 <0.001 (0.310 S)	0.75 (0.39)
Disengagement	0.30 (0.57)	0.31 (0.51)	0.14 (0.47)	0.47 (0.47)	0.11 0.74 (-0.018 N)	50.74 <0.001 (-0.702 M)	0.19 (0.66)
Positive reframing	1.35 (0.99)	1.16 (1.02)	1.58 (0.94)	0.93 (0.94)	4.33 0.04 (0.189 N)	52.02 <0.001 (0.691 M)	0.47 (0.49)
Denial	0.18 (0.42)	0.24 (0.34)	0.12 (0.47)	0.30 (0.47)	2.63 0.10 (-0.157 N)	21.32 <0.001 (-0.383 S)	4.14 (0.04)
Acceptance	2.04 (0.71)	1.99 (0.68)	2.29 (0.78)	1.75 (0.78)	0.64 0.42 (0.072 N)	61.92 <0.001 (0.692 M)	1.44 (0.23)
Religion	0.84 (1.13)	0.99 (1.19)	0.90 (1.25)	0.94 (1.26)	2.00 0.16 (-0.129 N)	0.117 0.73 (-0.032 N)	0.01 (0.94)
Humor	1.11 (0.99)	1.00 (1.02)	1.29 (1.09)	0.82 (0.94)	1.45 0.23 (0.109 N)	24.21 <0.001 (0.462 S)	0.02 (0.89)
Self-blame	0.55 (0.71)	0.50 (0.68)	0.39 (0.78)	0.66 (0.78)	0.43 0.51 (0.072 N)	18.35 <0.001 (-0.346 S)	1.94 (0.16)

A 2 × 2 factorial ANOVA (Snedecor's *F*) was applied.

<sup>a</sup>Higher scores show more use of the coping strategy.

<sup>b</sup>Effect sizes: N, null; S, small; M, medium.

(*p* < 0.001, *d* = 0.606), instrumental support (*p* < 0.001, *d* = 0.553), emotional support (*p* < 0.001, *d* = 0.574), positive reframing (*p* < 0.001, *d* = 0.691), and acceptance (*p* < 0.001, *d* = 0.692) (Table 4).

### Influence of Liver Disease Severity on QoL, Mental Health, and Coping Strategies

In QoL (SF-12 and CLDQ-NAFLD), there were statistically significant differences between the severity levels in physical

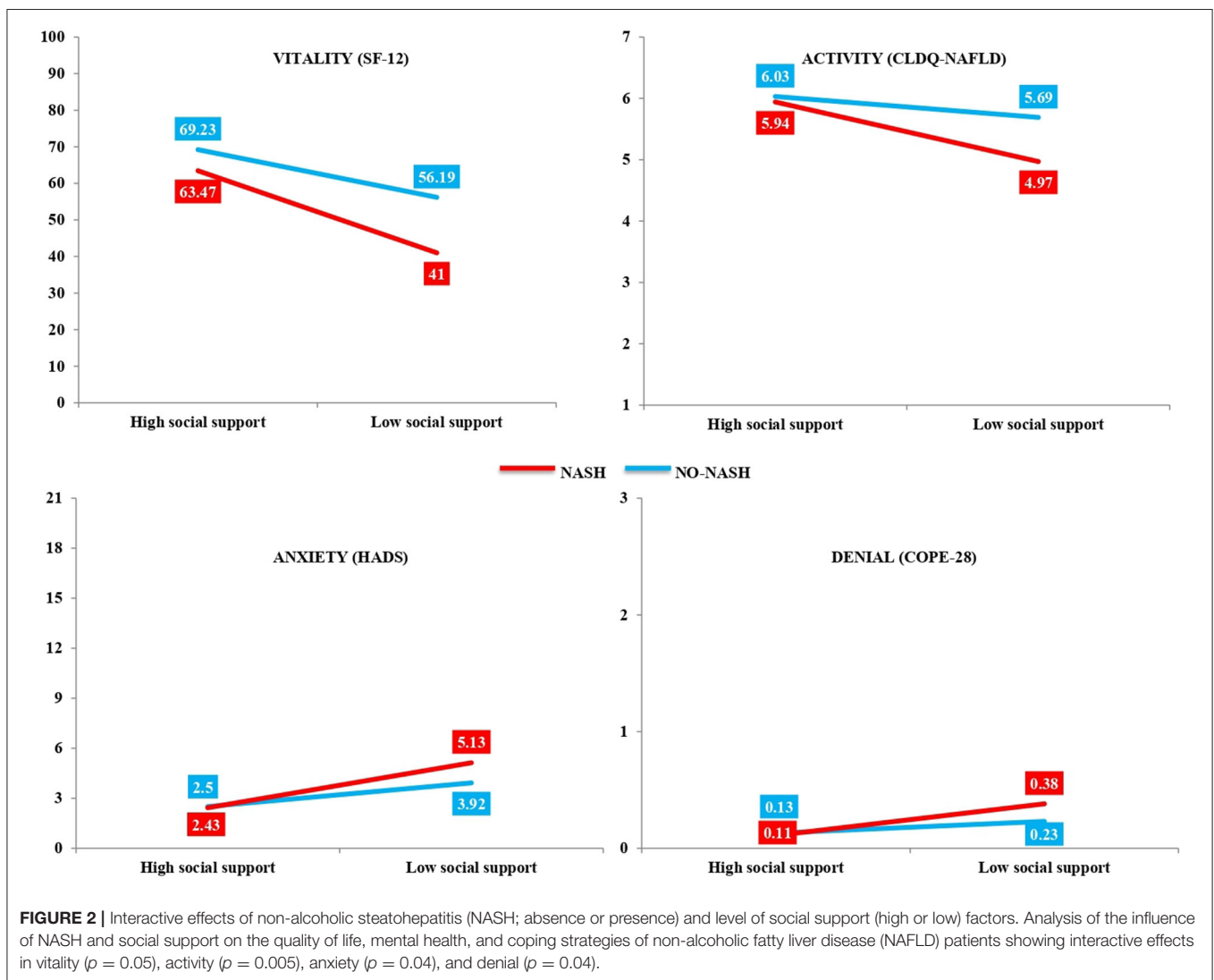
functioning (*p* < 0.001), role-physical (*p* < 0.001), bodily pain (*p* < 0.001), general health (*p* < 0.001), vitality (*p* < 0.001), social functioning (*p* = 0.01), role-emotional (*p* = 0.01), mental health (*p* = 0.001), PCS (*p* < 0.001), MCS (*p* = 0.03), abdominal symptoms (*p* < 0.001), activity (*p* < 0.001), emotional (*p* < 0.001), fatigue (*p* < 0.001), systemic symptoms (*p* < 0.001), worry (*p* < 0.001), and total CLDQ-NAFLD (*p* < 0.001). Specifically, by relevant effect sizes (medium and large), as shown in Tables 6, 7 and Figures 3, 4, *G<sub>a</sub>* (no-NASH without significant

**TABLE 5** | Simple effects in vitality (SF-12), activity (CLDQ-NAFLD), anxiety (HADS), and denial (COPE-28).

		Vitality (SF-12)		Activity (CLDQ-NAFLD)		Anxiety (HADS)		Denial (COPE-28)	
		<i>p</i>	Cohen's <i>d</i> <sup>a</sup>	<i>p</i>	Cohen's <i>d</i> <sup>a</sup>	<i>p</i>	Cohen's <i>d</i> <sup>a</sup>	<i>p</i>	Cohen's <i>d</i> <sup>a</sup>
Social support level	High–low	Absence NASH ( <i>G</i> <sub>1</sub> ): <i>n</i> = 201		0.05	0.283 S	0.004	−0.410 S	0.09	−0.250 S
		<0.001	0.505 M						
NASH	Absence–presence	Presence NASH ( <i>G</i> <sub>2</sub> ): <i>n</i> = 291		<0.001	0.805 L	<0.001	−0.786 M	<0.001	−0.638 M
		<0.001	0.873 L						
		High social support ( <i>G</i> <sub>3</sub> ): <i>n</i> = 245		0.56	0.075 N	0.88	0.020 N	0.77	0.045 N
		0.08	0.223 S						
		Low social support ( <i>G</i> <sub>4</sub> ): <i>n</i> = 247		<0.001	0.600 M	0.007	−0.352 S	0.01	−0.395 S
		<0.001	0.590 M						

SF-12, 12-Item Short-Form Health Survey; CLDQ-NAFLD, Chronic Liver Disease Questionnaire—Non-alcoholic Fatty Liver Disease; HADS, Hospital Anxiety and Depression Scale; COPE-28, Brief COPE.

<sup>a</sup>Cohen's *d*: N, null effect size; S, small effect size; M, medium effect size; L, large effect size.



fibrosis) scored higher in physical functioning (*p* < 0.001, *d* = 0.660), role-physical (*p* < 0.001, *d* = 0.603), bodily pain (*p* < 0.001, *d* = 0.566), vitality (*p* < 0.001, *d* = 0.638), PCS

(*p* < 0.001, *d* = 0.647), activity (*p* < 0.001, *d* = 0.679), emotional (*p* < 0.001, *d* = 0.517), fatigue (*p* < 0.001, *d* = 0.736), systemic symptoms (*p* < 0.001, *d* = 0.750), worry (*p* < 0.001, *d* = 0.573),



**TABLE 6 |** Comparison of quality of life (SF-12) in non-alcoholic fatty liver disease (NAFLD) severity groups: non-alcoholic steatohepatitis (NASH; with and without significant fibrosis) and no-NASH (with and without significant fibrosis).

SF-12	G <sub>a</sub> -G <sub>b</sub> : p (d <sup>a</sup> )	G <sub>a</sub> -G <sub>c</sub> : p (d <sup>a</sup> )	G <sub>a</sub> -G <sub>d</sub> : p (d <sup>a</sup> )	G <sub>b</sub> -G <sub>c</sub> : p (d <sup>a</sup> )	G <sub>b</sub> -G <sub>d</sub> : p (d <sup>a</sup> )	G <sub>c</sub> -G <sub>d</sub> : p (d <sup>a</sup> )
Physical functioning	<0.001 (0.660 M)	0.04 (0.610 M)	0.69 (0.127 N)	0.98 (-0.082 N)	<0.001 (-0.547 M)	0.14 (-0.489 S)
Role-physical	<0.001 (0.603 M)	0.26 (0.422 S)	0.99 (0.034 N)	0.79 (-0.189 N)	<0.001 (-0.579 M)	0.33 (-0.395 S)
Bodily pain	<0.001 (0.566 M)	0.57 (0.297 S)	0.79 (0.108 N)	0.68 (-0.238 S)	0.001 (-0.447 S)	0.83 (-0.190 N)
General health	<0.001 (0.480 S)	0.32 (0.373 S)	0.99 (0.036 N)	0.94 (-0.124 N)	0.001 (-0.439 S)	0.43 (-0.332 S)
Vitality	<0.001 (0.638 M)	0.26 (0.362 S)	0.14 (0.257 S)	0.65 (-0.220 S)	0.007 (-0.375 S)	0.92 (-0.125 N)
Social functioning	0.01 (0.335 S)	0.43 (0.143 N)	0.98 (0.012 N)	1.00 (0.013 N)	0.05 (-0.296 S)	0.54 (-0.314 S)
Role-emotional	0.01 (0.336 S)	0.97 (0.093 N)	1.00 (0.010 N)	0.58 (-0.255 S)	0.02 (-0.346 S)	0.98 (-0.088 N)
Mental health	0.001 (0.410 S)	0.98 (0.085 N)	0.96 (0.058 N)	0.38 (-0.220 S)	0.01 (-0.360 S)	1.00 (-0.026 N)
PCS	<0.001 (0.647 M)	0.06 (0.574 M)	0.81 (0.102 N)	0.97 (-0.094 N)	<0.001 (-0.542 M)	0.17 (-0.465 S)
MCS	0.03 (0.299 S)	1.00 (0.029 N)	0.95 (0.066 N)	0.55 (-0.267 S)	0.16 (-0.239 S)	1.00 (0.035 N)

Tukey's honestly significant difference or Games-Howell was applied depending on whether or not they met the assumption of homoscedasticity.

G<sub>a</sub>, no-NASH without significant fibrosis; G<sub>b</sub>, NASH with significant fibrosis; G<sub>c</sub>, no-NASH with significant fibrosis; G<sub>d</sub>, NASH without significant fibrosis; PCS, physical component summary; MCS, mental component summary; SF-12, 12-Item Short-Form Health Survey.

<sup>a</sup>Effect sizes: N, null; S, small; M, medium.

**TABLE 7 |** Comparison of quality of life (CLDQ-NAFLD) between non-alcoholic fatty liver disease (NAFLD) severity groups: non-alcoholic steatohepatitis (NASH; with and without significant fibrosis) and no-NASH (with and without significant fibrosis).

CLDQ-NAFLD	G <sub>a</sub> -G <sub>b</sub> : p (d <sup>a</sup> )	G <sub>a</sub> -G <sub>c</sub> : p (d <sup>a</sup> )	G <sub>a</sub> -G <sub>d</sub> : p (d <sup>a</sup> )	G <sub>b</sub> -G <sub>c</sub> : p (d <sup>a</sup> )	G <sub>b</sub> -G <sub>d</sub> : p (d <sup>a</sup> )	G <sub>c</sub> -G <sub>d</sub> : p (d <sup>a</sup> )
Abdominal symptoms	0.006 (0.358 S)	0.73 (0.229 S)	0.37 (-0.186 N)	0.93 (-0.134 N)	<0.001 (-0.559 M)	0.30 (-0.412 S)
Activity	<0.001 (0.679 M)	0.06 (0.575 M)	0.91 (0.083 N)	0.91 (-0.138 N)	<0.001 (-0.633 M)	0.12 (-0.523 M)
Emotional	<0.001 (0.517 M)	0.94 (0.111 N)	1.00 (0.010 N)	0.15 (-0.428 S)	<0.001 (-0.521 M)	0.96 (-0.104 N)
Fatigue	<0.001 (0.736 M)	0.03 (0.671 M)	0.85 (0.095 N)	0.99 (-0.056 N)	<0.001 (-0.651 M)	0.06 (-0.586 M)
Systemic symptoms	<0.001 (0.750 M)	0.15 (0.514 M)	0.67 (0.131 N)	0.86 (-0.166 N)	<0.001 (-0.638 M)	0.33 (-0.409 S)
Worry	<0.001 (0.573 M)	0.14 (0.537 M)	0.94 (-0.066 N)	1.00 (-0.008 N)	<0.001 (-0.633 M)	0.10 (-0.594 M)
Total	<0.001 (0.769 M)	0.11 (0.546 M)	1.00 (0.000 N)	0.85 (-0.178 N)	<0.001 (-0.804 L)	0.12 (-0.570 M)

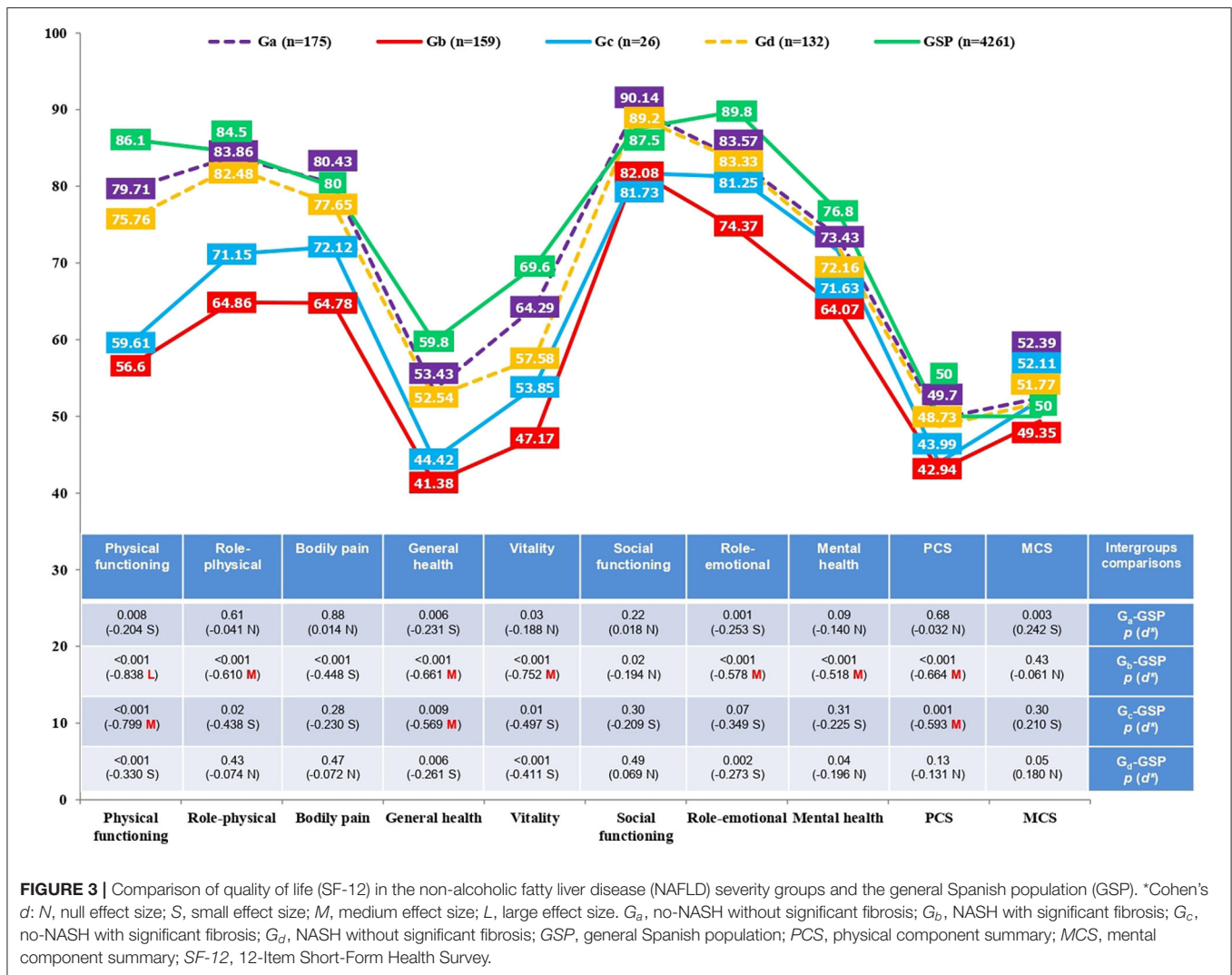
Games-Howell post hoc pairwise analysis was applied.

G<sub>a</sub>, no-NASH without significant fibrosis; G<sub>b</sub>, NASH with significant fibrosis; G<sub>c</sub>, no-NASH with significant fibrosis; G<sub>d</sub>, NASH without significant fibrosis; CLDQ-NAFLD, Chronic Liver Disease Questionnaire—Non-alcoholic Fatty Liver Disease.

<sup>a</sup>Effect sizes: N, null; S, small; M, medium; L, large.

and total CLDQ-NAFLD ( $p < 0.001$ ,  $d = 0.769$ ) than G<sub>b</sub> (NASH with significant fibrosis). G<sub>a</sub> (no-NASH without significant fibrosis) also scored higher in physical functioning ( $p = 0.04$ ,  $d = 0.610$ ), PCS ( $p = 0.06$ ,  $d = 0.574$ ), activity ( $p = 0.06$ ,

$d = 0.575$ ), fatigue ( $p = 0.03$ ,  $d = 0.671$ ), systemic symptoms ( $p = 0.15$ ,  $d = 0.514$ ), worry ( $p = 0.14$ ,  $d = 0.537$ ), and total CLDQ-NAFLD ( $p = 0.11$ ,  $d = 0.546$ ) than G<sub>c</sub> (no-NASH with significant fibrosis). G<sub>b</sub> (NASH with significant fibrosis) scored



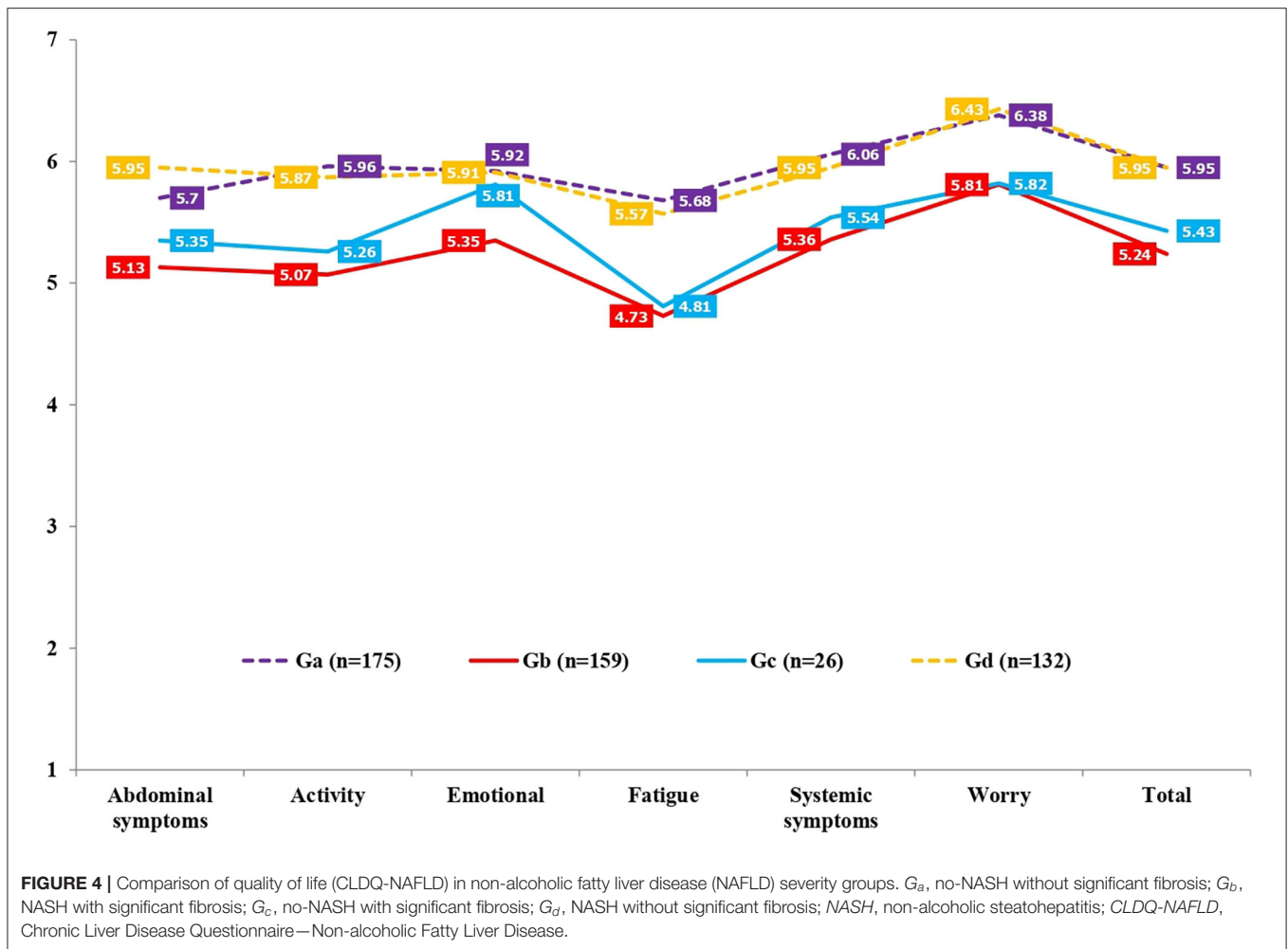
**FIGURE 3 |** Comparison of quality of life (SF-12) in the non-alcoholic fatty liver disease (NAFLD) severity groups and the general Spanish population (GSP). \*Cohen's  $d$ :  $N$ , null effect size;  $S$ , small effect size;  $M$ , medium effect size;  $L$ , large effect size.  $G_a$ , no-NASH without significant fibrosis;  $G_b$ , NASH with significant fibrosis;  $G_c$ , no-NASH with significant fibrosis;  $G_d$ , NASH without significant fibrosis;  $GSP$ , general Spanish population;  $PCS$ , physical component summary;  $MCS$ , mental component summary;  $SF$ -12, 12-Item Short-Form Health Survey.

lower in physical functioning ( $p < 0.001$ ,  $d = -0.547$ ), role-physical ( $p < 0.001$ ,  $d = -0.579$ ), PCS ( $p < 0.001$ ,  $d = -0.542$ ), abdominal symptoms ( $p < 0.001$ ,  $d = -0.559$ ), activity ( $p < 0.001$ ,  $d = -0.633$ ), emotional ( $p < 0.001$ ,  $d = -0.521$ ), fatigue ( $p < 0.001$ ,  $d = -0.651$ ), systemic symptoms ( $p < 0.001$ ,  $d = -0.638$ ), worry ( $p < 0.001$ ,  $d = -0.633$ ), and total CLDQ-NAFLD ( $p < 0.001$ ,  $d = -0.804$ ) than  $G_d$  (NASH without significant fibrosis).  $G_c$  (no-NASH with significant fibrosis) also scored lower in activity ( $p = 0.12$ ,  $d = -0.523$ ), fatigue ( $p = 0.06$ ,  $d = -0.586$ ), worry ( $p = 0.10$ ,  $d = -0.594$ ), and total CLDQ-NAFLD ( $p = 0.12$ ,  $d = -0.570$ ) than  $G_d$  (NASH without significant fibrosis). Similarly, the  $G_b$  (NASH with significant fibrosis) and  $G_c$  (no-NASH with significant fibrosis) groups differed considerably from the general Spanish population (GSP) in some dimensions of QoL measured with the SF-12 (Figure 3). More precisely,  $G_b$  (NASH with significant fibrosis) scored lower in physical functioning ( $p < 0.001$ ,  $d = -0.838$ ), role-physical ( $p < 0.001$ ,  $d = -0.610$ ), general health ( $p < 0.001$ ,  $d = -0.661$ ), vitality ( $p < 0.001$ ,  $d = -0.752$ ), role-emotional ( $p < 0.001$ ,

$d = -0.578$ ), mental health ( $p < 0.001$ ,  $d = -0.518$ ), and PCS ( $p < 0.001$ ,  $d = -0.664$ ) than the GSP.  $G_c$  (no-NASH with significant fibrosis) also scored lower in physical functioning ( $p < 0.001$ ,  $d = -0.799$ ), general health ( $p < 0.009$ ,  $d = -0.569$ ), and PCS ( $p < 0.001$ ,  $d = -0.593$ ) than the GSP.

As shown in Table 8, differences in mental health (HADS and BDI-II) were found in total anxiety ( $p = 0.01$ ) and total depression in the HADS ( $p < 0.001$ ) and BDI-II ( $p < 0.001$ ). Specifically, by relevant effect sizes (medium),  $G_b$  (NASH with significant fibrosis) showed higher scores in total depression than groups  $G_a$  (no-NASH without significant fibrosis) (HADS:  $p < 0.001$ ,  $d = -0.531$ ; BDI-II:  $p < 0.001$ ,  $d = -0.501$ ) or  $G_d$  (NASH without significant fibrosis) (HADS:  $p < 0.001$ ,  $d = 0.573$ ; BDI-II:  $p < 0.001$ ,  $d = 0.628$ ).

In coping strategies (COPE-28), shown in Table 9, differences were found in active coping ( $p < 0.001$ ), planning ( $p = 0.03$ ), disengagement ( $p < 0.001$ ), positive reframing ( $p = 0.001$ ), denial ( $p = 0.004$ ), acceptance ( $p < 0.001$ ), and humor ( $p = 0.02$ ). By relevant effect sizes (medium), group  $G_d$  (NASH without



significant fibrosis) scored lower in disengagement than groups *G<sub>c</sub>* (no-NASH with significant fibrosis;  $p = 0.21$ ,  $d = 0.511$ ) or *G<sub>b</sub>* (NASH with significant fibrosis;  $p < 0.001$ ,  $d = 0.589$ ). *G<sub>d</sub>* (NASH without significant fibrosis) also scored higher than *G<sub>b</sub>* (NASH with significant fibrosis) in active coping ( $p < 0.001$ ,  $d = -0.567$ ) and acceptance ( $p < 0.001$ ,  $d = -0.586$ ) (Table 10).

### Histological and Biopsychosocial Predictors of QoL in NAFLD Patients

A binary logistic regression was performed to evaluate the effect of the histological (steatosis, lobular inflammation, hepatocellular ballooning, and fibrosis) and biopsychosocial (sex, age, obesity, physical and mental health-related QoL, anxiety and depressive symptoms, coping strategies, and perceived social support) variables on the disease-specific QoL of NAFLD patients. The logistic regression model was statistically significant ( $\chi^2 = 367.256$ ,  $p < 0.001$ ). The model explained 70.1% (Nagelkerke's  $R^2$ ) of the variance in QoL, with an accuracy index of 0.852. Sensitivity was 86.6% and specificity was 83.7%, while the positive and negative predictive values were 0.841 and 0.861, respectively. Of all predictor variables, only fibrosis, sex, total depression (BDI-II), PCS (SF-12), total anxiety (HADS), and

MCS (SF-12) were independently associated with total CLDQ-NAFLD. On the one hand, a significant inverse association was found between significant fibrosis (OR = 0.500, 95% CI = 0.253–0.987,  $p = 0.04$ ), female sex (OR = 0.500, 95% CI = 0.254–0.981,  $p = 0.04$ ), total depression (OR = 0.758, 95% CI = 0.661–0.869,  $p < 0.001$ ), and total anxiety (OR = 0.858, 95% CI = 0.758–0.971,  $p = 0.01$ ) and QoL (Table 11). On the other hand, a significant direct association was found between PCS (OR = 1.174, 95% CI = 1.123–1.227,  $p < 0.001$ ) and MCS (OR = 1.073, 95% CI = 1.022–1.125,  $p = 0.004$ ) and QoL (Table 11).

### DISCUSSION

This study analyzed the differences in QoL, mental health, and coping strategies in NAFLD patients based on factors such as social support and the severity of liver damage (NASH and fibrosis). We also analyzed whether histological and biopsychosocial variables could predict the QoL of these patients. There were no important sociodemographic differences between the groups compared, except in the age, which was higher in patients with significant fibrosis than in those without significant fibrosis. This finding coincides with other studies (31, 32) which

**TABLE 8 |** Comparison of mental health (HADS and BDI-II) between non-alcoholic fatty liver disease (NAFLD) severity groups: non-alcoholic steatohepatitis (NASH; with and without significant fibrosis) and no-NASH (with and without significant fibrosis).

		No-NASH without significant fibrosis (G <sub>a</sub> ): n = 175	NASH with significant fibrosis (G <sub>b</sub> ): n = 159	No-NASH with significant fibrosis (G <sub>c</sub> ): n = 26	NASH without significant fibrosis (G <sub>d</sub> ): n = 132	Statistic	p
		M <sup>a</sup> (SD)	M <sup>a</sup> (SD)	M <sup>a</sup> (SD)	M <sup>a</sup> (SD)		
HADS	Total anxiety	3.19 (3.37)	4.39 (3.95)	3.12 (3.94)	3.14 (3.41)	$U_{(3,108,869)} = 3.72$	0.01
	Total depression	2.09 (2.94)	4.09 (4.44)	3.08 (4.49)	2.00 (2.62)	$U_{(3,106,161)} = 9.46$	<0.001
BDI-II	Total depression	5.75 (7.11)	9.89 (9.28)	8.19 (8.26)	5.08 (5.57)	$U_{(3,108,396)} = 10.73$	<0.001

Post hoc comparisons							
		G <sub>a</sub> -G <sub>b</sub> : p (d <sup>b</sup> )	G <sub>a</sub> -G <sub>c</sub> : p (d <sup>b</sup> )	G <sub>a</sub> -G <sub>d</sub> : p (d <sup>b</sup> )	G <sub>b</sub> -G <sub>c</sub> : p (d <sup>b</sup> )	G <sub>b</sub> -G <sub>d</sub> : p (d <sup>b</sup> )	G <sub>c</sub> -G <sub>d</sub> : p (d <sup>b</sup> )
HADS	Total anxiety	0.02 (-0.327 S)	1.00 (0.019 N)	1.00 (0.015 N)	0.43 (0.322 S)	0.02 (0.339 S)	1.00 (-0.005 N)
	Total depression	<0.001 (-0.531 M)	0.70 (-0.261 S)	0.99 (0.032 N)	1.71 (0.226 S)	<0.001 (0.573 M)	0.64 (0.284 S)
BDI-II	Total depression	<0.001 (-0.501 M)	0.49 (-0.317 S)	0.78 (0.105 N)	0.77 (0.193 N)	<0.001 (0.628 M)	0.27 (0.441 S)

A one-way ANOVA (Welch's U) with Games-Howell post hoc pairwise analysis were applied.

HADS, Hospital Anxiety and Depression Scale; BDI-II, Beck Depression Inventory-II.

<sup>a</sup>Higher scores show worse mental health.

<sup>b</sup>Effect sizes: N, null; S, small; M, medium.

had already noted the relationship between older age and the presence of significant or advanced fibrosis.

An interaction between NASH and social support was found in vitality, activity, anxiety, and denial. Among patients with NASH, those who reported low perceived social support showed less vitality and activity, greater anxiety, and more use of denial. This coincides with the results of a previous study done in patients with hepatitis C, which found a relationship between low levels of social support and more anxiety symptoms, as well as worse physical QoL (9). However, there were hardly any differences depending on social support in patients without NASH, except in vitality, which was higher in participants with high perceived social support.

When patients with low and high social support were compared, regardless of whether they had NASH or not, the first had poorer QoL and higher scores in anxiety and depressive symptoms, and more maladaptive coping, due to less use of strategies such as active coping, planning, using support, positive reframing, or acceptance. This ratifies the role of social support as a modulating agent of QoL, mental health, and coping strategies (33). Furthermore, low social support could be considered a major risk factor in NAFLD, especially when the disease progresses toward NASH and fibrosis. Therefore, it is fundamental to promote the creation of support networks like self-help groups because of their positive results in patient health, as already demonstrated in

cancer (34), multiple sclerosis (35), or liver transplant candidate groups (36).

Moreover, patients with significant fibrosis had worse QoL in comparison with those without significant fibrosis and with the Spanish general population. This finding coincides with the study by David et al. (13), as it confirms the significant effect of fibrosis on QoL. In agreement with previous studies, the impact on QoL was mainly physical (3–6). Patients with significant fibrosis had particularly more impairment in physical functioning, role-physical, PCS, activity, emotional, fatigue, systemic symptoms, worry, and total CLDQ-NAFLD. This may be partially explained by the symptomatology associated with NAFLD, as problems affecting the patient's functionality, such as fatigue (3), daytime somnolence (37), and cognitive dysfunction (38), especially in the more advanced stages. These results agree with other studies comparing the QoL of NAFLD patients with that of the healthy population (3, 4, 13). We therefore suggest fibrosis as a determining factor in these differences, a conclusion confirmed by the results of the binary logistic regression analysis. Of all the variables analyzed for liver histology, fibrosis was the only one independently associated with QoL.

The relevance of sex in the QoL of NAFLD patients was also analyzed, with the results showing that female sex, along with the presence of significant fibrosis, was the main independent predictor of a worse QoL in these patients. Therefore, our study coincides with previous research, highlighting the greater vulnerability of the female sex to the impact caused by NAFLD

**TABLE 9 |** Comparison of coping strategies (COPE-28) between non-alcoholic fatty liver disease (NAFLD) severity groups: non-alcoholic steatohepatitis (NASH; with and without significant fibrosis) and no-NASH (with and without significant fibrosis).

COPE-28	No-NASH without significant fibrosis (G <sub>a</sub> ): n = 175	NASH with significant fibrosis (G <sub>b</sub> ): n = 159	No-NASH with significant fibrosis (G <sub>c</sub> ): n = 26	NASH without significant fibrosis (G <sub>d</sub> ): n = 132	Statistic	p
	M <sup>a</sup> (SD)	M <sup>a</sup> (SD)	M <sup>a</sup> (SD)	M <sup>a</sup> (SD)		
Active coping	1.99 (0.77)	1.66 (0.87)	1.88 (0.78)	2.10 (0.67)	$U_{(3,110,482)} = 7.99$	<0.001
Planning	1.27 (1.10)	1.17 (1.05)	1.50 (1.00)	1.52 (0.99)	$F_{(3,488)} = 3.02$	0.03
Instrumental support	1.20 (0.99)	1.03 (0.99)	0.88 (0.96)	1.25 (1.05)	$F_{(3,488)} = 1.93$	0.12
Emotional support	1.05 (1.01)	0.98 (0.99)	0.94 (0.93)	1.22 (1.04)	$F_{(3,488)} = 1.53$	0.21
Self-distraction	0.68 (0.98)	0.75 (1.02)	0.58 (0.66)	0.90 (0.97)	$U_{(3,120,760)} = 1.88$	0.14
Venting	1.01 (1.02)	1.06 (1.06)	0.86 (0.98)	0.96 (1.00)	$F_{(3,488)} = 0.37$	0.77
Disengagement	0.27 (0.51)	0.45 (0.63)	0.42 (0.66)	0.15 (0.35)	$U_{(3,106,617)} = 9.24$	<0.001
Positive reframing	1.38 (1.01)	0.97 (1.06)	1.17 (1.17)	1.36 (1.00)	$F_{(3,488)} = 5.35$	0.001
Denial	0.17 (0.37)	0.34 (0.54)	0.23 (0.51)	0.14 (0.36)	$U_{(3,107,139)} = 4.74$	0.004
Acceptance	2.07 (0.75)	1.77 (0.90)	1.90 (0.81)	2.23 (0.65)	$U_{(3,109,615)} = 9.05$	<0.001
Religion	0.82 (1.13)	1.01 (1.19)	0.96 (1.08)	0.98 (1.23)	$F_{(3,488)} = 0.79$	0.50
Substance use	0.00 (0.07)	0.00 (0.04)	0.00 (0.00)	0.00 (0.00)	$F_{(3,488)} = 0.35$	0.78
Humor	1.14 (1.10)	0.83 (1.01)	0.96 (1.02)	1.18 (1.03)	$F_{(3,488)} = 3.42$	0.02
Self-blame	0.54 (0.65)	0.63 (0.76)	0.54 (0.56)	0.36 (0.63)	$U_{(3,120,760)} = 1.88$	0.14

A one-way ANOVA (Snedecor's F or Welch's U) was applied depending on whether or not they met the assumption of homoscedasticity. COPE-28, Brief COPE.

<sup>a</sup>Higher scores show more use of the coping strategy.

(2, 18). Binary logistic regression analysis also revealed that the severity of anxiety and depressive symptoms predicted the QoL of the participants, in line with Huang et al. (39), who found that worse mental health was associated with a reduced QoL in chronic liver disease patients. Physical and mental health-related QoL, measured with the generic SF-12, also predicted disease-specific QoL measured with CLDQ-NAFLD, an instrument specific to NAFLD patients. As quality of life is one of the core goals of intervention in these patients, the model's predictive variables should be given special consideration in the future. Female patients with significant fibrosis, stronger anxiety and depressive symptoms, and worse physical and mental health-related QoL are more likely to have a greater impact on their health and well-being. These patients would therefore require closer attention in the design of multidisciplinary NAFLD management strategies. Lastly, fibrosis was also associated with worse mental health and more maladaptive coping strategies. NASH patients with significant fibrosis scored higher in depression than patients without significant fibrosis, whether or not they had NASH. Patients with significant fibrosis also

employed maladaptive strategies, such as disengagement, to a greater extent in comparison with NASH patients without significant fibrosis, and fewer adaptive strategies such as active coping or acceptance. The results for mental health confirm the relationship between fibrosis and depression already noted previously by Weinstein et al. (15), Youssef et al. (7), and Tomeno et al. (16) and therefore contradict the conclusion of Kim et al. (17).

In brief, the main findings of this study verified that there are differences in the QoL, mental health, and coping strategies of NAFLD patients depending on the perceived social support and histological fibrosis and confirm that the relevant variables predicting a worse disease-specific QoL in these patients are significant fibrosis, female sex, greater anxiety and depressive symptoms, and worse physical and mental health-related QoL. These results are relevant because such patients need to follow certain interventions based on lifestyle changes including diet, physical activity, and exercise to promote NASH resolution and fibrosis regression when losing weight. However, the probability of successful adherence to these guidelines is certainly low (40).

**TABLE 10 |** Post hoc comparison of coping strategies (COPE-28) between non-alcoholic fatty liver disease (NAFLD) severity groups: non-alcoholic steatohepatitis (NASH; with and without significant fibrosis) and no-NASH (with and without significant fibrosis).

COPE-28	G <sub>a</sub> -G <sub>b</sub> : p (d <sup>2</sup> )	G <sub>a</sub> -G <sub>c</sub> : p (d <sup>2</sup> )	G <sub>a</sub> -G <sub>d</sub> : p (d <sup>2</sup> )	G <sub>b</sub> -G <sub>c</sub> : p (d <sup>2</sup> )	G <sub>b</sub> -G <sub>d</sub> : p (d <sup>2</sup> )	G <sub>c</sub> -G <sub>d</sub> : p (d <sup>2</sup> )
Active coping	0.002 (0.402 S)	0.92 (0.142 N)	0.54 (-0.152 N)	0.56 (-0.266 S)	<0.001 (-0.567 M)	0.56 (-0.303 S)
Planning	0.82 (0.093 N)	0.74 (-0.219 S)	0.17 (-0.239 S)	0.46 (-0.322 S)	0.03 (-0.343 S)	1.00 (-0.020 N)
Instrumental support	0.41 (0.172 N)	0.45 (0.328 S)	0.97 (-0.049 N)	0.91 (0.154 N)	0.24 (-0.216 S)	0.33 (-0.368 S)
Emotional support	0.91 (0.060 N)	0.95 (0.113 N)	0.49 (-0.166 N)	1.00 (0.042 N)	0.19 (-0.236 S)	0.58 (-0.284 S)
Self-distraction	0.93 (-0.070 N)	0.89 (0.120 N)	0.22 (-0.226 S)	0.68 (0.198 N)	0.58 (-0.151 N)	0.17 (-0.386 S)
Venting	0.97 (-0.048 N)	0.91 (0.150 N)	0.98 (0.049 N)	0.81 (0.196 N)	0.87 (0.097 N)	0.97 (-0.101 N)
Disengagement	0.02 (-0.314 S)	0.68 (-0.254 S)	0.08 (0.274 S)	1.00 (0.046 N)	<0.001 (0.589 M)	0.21 (0.511 M)
Positive reframing	0.002 (0.396 S)	0.76 (0.192 N)	1.00 (0.020 N)	0.79 (-0.179 N)	0.008 (-0.378 S)	0.83 (-0.175 N)
Denial	0.008 (-0.367 S)	0.94 (-0.135 N)	0.91 (0.082 N)	0.77 (0.209 S)	0.002 (0.436 S)	0.84 (0.204 S)
Acceptance	0.005 (0.362 S)	0.75 (0.218 S)	0.19 (-0.228 S)	0.86 (-0.152 N)	<0.001 (-0.586 M)	0.22 (-0.449 S)
Religion	0.49 (-0.164 N)	0.94 (-0.127 N)	0.65 (-0.135 N)	1.00 (0.044 N)	1.00 (0.025 N)	1.00 (-0.017 N)
Substance use	0.97 (0.000 N)	0.95 (0.000 N)	0.76 (0.000 N)	0.99 (0.000 N)	0.95 (0.000 N)	1.00 (0.000 N)
Humor	0.04 (0.294 S)	0.84 (0.170 N)	0.99 (-0.037 N)	0.94 (-0.128 N)	0.03 (-0.343 S)	0.77 (-0.215 S)
Self-blame	0.07 (-0.127 N)	1.00 (0.000 N)	0.09 (0.281 S)	0.88 (0.135 N)	0.005 (0.387 S)	0.48 (0.302 S)

Tukey's honestly significant difference or Games-Howell for post hoc multiple comparisons was applied depending on whether or not they met the assumption of homoscedasticity. G<sub>a</sub>, no-NASH without significant fibrosis; G<sub>b</sub>, NASH with significant fibrosis; G<sub>c</sub>, no-NASH with significant fibrosis; G<sub>d</sub>, NASH without significant fibrosis; COPE-28, Brief COPE. <sup>a</sup>Effect sizes: N, null; S, small; M, medium.

**TABLE 11 |** Binary logistic regression analysis with total CLDQ-NAFLD as the dependent variable.

Variables	Total CLDQ-NAFLD					
	Coefficient	SE	AUC (CI)	P	OR	95% CI Lower Upper
Significant fibrosis	-0.693	0.347	0.616 (0.566-0.666)	0.04	0.500	0.253 0.987
Sex	-0.694	0.344	0.614 (0.564-0.664)	0.04	0.500	0.254 0.981
Total depression BDI-II	-0.277	0.070	0.887 (0.858-0.916)	<0.001	0.758	0.661 0.869
PCS	0.160	0.023	0.789 (0.747-0.831)	<0.001	1.174	1.123 1.227
Total anxiety HADS	-0.154	0.063	0.785 (0.745-0.825)	0.01	0.858	0.758 0.971
MCS	0.070	0.02	0.768 (0.724-0.811)	0.004	1.073	1.022 1.125

SE, standard error; AUC, area under the ROC curve; OR, odds ratio; CI, confidence interval; PCS, physical component summary; MCS, mental component summary; CLDQ-NAFLD, Chronic Liver Disease Questionnaire—Non-alcoholic Fatty Liver Disease; BDI-II, Beck Depression Inventory—II; HADS, Hospital Anxiety and Depression Scale.



Indeed, in the study by Vilar-Gómez et al. (41), just 10% of patients lost 10% of body weight in spite of including behavioral meeting bimonthly. Keeping in mind the influence that variables such as QoL (42), mental health (43), coping strategies (44), or perceived social support (45) exert on therapeutic adherence, the biopsychosocial risk factors found in this study could be associated with a negative impact on adherence to intervention guidelines in NAFLD patients.

A structured psychological intervention could therefore improve therapeutic adherence and, as a consequence, the patient's clinical evolution (46), requiring special attention those patients with a low social support, significant fibrosis, or of the female sex due to their greater tendency to show a higher-risk biopsychosocial profile. We therefore recommend the inclusion of cognitive-behavioral treatment in NAFLD interventions (47) with techniques such as: psychoeducation focusing on NAFLD and how it progresses, as patients are generally unaware of their disease and the long-term consequences to their health (48); cognitive restructuring to intervene on unrealistic expectations related to weight loss, significantly linked to quitting therapy (49); problem-solving strategies to cope with obstacles to weight loss or maintenance (50); reinforcing alternative behaviors to eating without being hungry, for instance using relaxation or distraction techniques (50); using self-report questionnaires about weight, physical activity, and diet (51); setting commitments and realistic personal goals about weight loss or physical activity (49); and controlling stimuli, for example, keeping high-fat foods out of reach and placing those recommended in an accessible place at home (49).

Our study showed several limitations. Firstly, the possible collinearity of fibrosis and age. Secondly, the cross-sectional design of the current study did not allow us to analyze changes in histological features over time and their impact on the psychological profile. Thirdly, we did not analyze how self-efficacy, an important variable in chronic liver diseases, could influence the QoL and mental health of NAFLD patients (8). Lastly, analysis of the impact of other pathologies such as type 2 diabetes, arterial hypertension, hypercholesterolemia, hypertriglyceridemia, cardiovascular disease, thyroid disease, or obstructive sleep apnea syndrome on the biopsychosocial profile of NAFLD patients would be of interest for future research. Nevertheless, the large sample of consecutive patients from real clinical practice in Spain may be considered a major strength of this study.

## DATA AVAILABILITY STATEMENT

The datasets presented in this article are not readily available because they may compromise the privacy of study participants and may not be shared publicly. The public availability of the data is restricted by the Ethics Committee of the Virgen del Rocío

University Hospital of Seville (Spain). Data are available upon request to the authors. Requests to access the datasets should be directed to Jesús Funuyet-Salas, jfunuyet1@us.es.

## ETHICS STATEMENT

The studies involving human participants were reviewed and approved by Ethics Committee of the Virgen del Rocío University Hospital of Seville (Spain). The patients/participants provided their written informed consent to participate in this study.

## AUTHOR CONTRIBUTIONS

JF-S, MP-S-G, AM-R, and MR-G designed and conducted research, collected, analyzed, interpreted the data, and wrote the paper. All authors provided critical revision and approval of the manuscript and contributed equally to this article.

## FUNDING

This study was funded by the Spanish Ministry of Economy, Industry and Competitiveness (Project PSI2017-83365-P), the Spanish Ministry of Education and Professional Training (Project FPU16/03146), and an unrestricted grant from Gilead Sciences, Inc. The authors declare that Gilead Sciences, Inc. was not involved in the study design, collection, analysis, interpretation of data, the writing of this article or the decision to submit it for publication.

## ACKNOWLEDGMENTS

We would like to thank the patients and the researchers from Hepamet, the Spanish Registry: Agustín Albillos-Martínez, M.D. (Ramón y Cajal University Hospital), Rocio Aller-de-la-Fuente, M.D. (University Clinical Hospital of Valladolid), Salvador Augustin, M.D. (Vall d'Hebron University Hospital), José Luis Calleja-Panero, M.D. (Puerta de Hierro University Hospital), Isabel Carmona-Soria, M.D. (Virgen Macarena University Hospital), Javier Crespo-García, M.D. (Marqués de Valdecilla University Hospital), Moisés Diago-Madrid, M.D. (University General Hospital of Valencia), Carmelo García-Monzón, M.D. (Santa Cristina University Hospital), Judith Gómez-Camarero, M.D. (Burgos University Hospital), and German Soriano-Pastor, M.D. (Santa Creu i Sant Pau Hospital).

## SUPPLEMENTARY MATERIAL

The Supplementary Material for this article can be found online at: <https://www.frontiersin.org/articles/10.3389/fmed.2020.585425/full#supplementary-material>

## REFERENCES

1. Dan AA, Kallman JB, Wheeler A, Younoszai Z, Collantes R, Bondini S, et al. Health-related quality of life in patients with non-alcoholic fatty liver disease. *Aliment Pharmacol Ther.* (2007) 26:815–20. doi: 10.1111/j.1365-2036.2007.03426.x
2. Afendy A, Kallman JB, Stepanova M, Younoszai Z, Aquino RD, Bianchi G, et al. Predictors of health-related quality of life in patients with

- chronic liver disease. *Aliment Pharmacol Ther.* (2009) 30:469–76. doi: 10.1111/j.1365-2036.2009.04061.x
3. Golabi P, Ogtonguren M, Cable R, Felix S, Koenig A, Sayiner M, et al. Non-alcoholic fatty liver disease (NAFLD) is associated with impairment of health related quality of life (HRQOL). *Health Qual Life Outcomes.* (2016) 14:18. doi: 10.1186/s12955-016-0420-z
  4. Sayiner M, Stepanova M, Pham H, Noor B, Walters M, Younossi ZM. Assessment of health utilities and quality of life in patients with non-alcoholic fatty liver disease. *BMJ Open Gastro.* (2016) 3:e000106. doi: 10.1136/bmjgast-2016-000106
  5. Younossi ZM, Blissett D, Blissett R, Henry L, Stepanova M, Younossi Y, et al. The economic and clinical burden of nonalcoholic fatty liver disease in the United States and Europe. *Hepatology.* (2016) 64:1577–86. doi: 10.1002/hep.28785
  6. Assimakopoulos K, Karaivazoglou K, Tsermpini EE, Diamantopoulou G, Triantos C. Quality of life in patients with nonalcoholic fatty liver disease: a systematic review. *J Psychosom Res.* (2018) 112:73–80. doi: 10.1016/j.jpsychores.2018.07.004
  7. Yousssef NA, Abdelmalek MF, Binks M, Guy CD, Omenetti A, Smith AD, et al. Associations of depression, anxiety and antidepressants with histological severity of nonalcoholic fatty liver disease. *Liver Int.* (2013) 33:1062–70. doi: 10.1111/liv.12165
  8. Gutteling JJ, Duijvenvoorden HJ, Busschbach JVV, de Man RA, Darlington ASE. Psychological determinants of health-related quality of life in patients with chronic liver disease. *Psychosomatics.* (2010) 51:157–65. doi: 10.1016/S0033-3182(10)70676-9
  9. Blasiole JA, Shinkunas L, Labrecque DR, Arnold RM, Zickmund SL. Mental and physical symptoms associated with lower social support for patients with hepatitis C. *World J Gastroenterol.* (2006) 12:4665–72. doi: 10.3748/wjg.v12.i29.4665
  10. Poorkaveh A, Modabbernia A, Ashrafi M, Taslimi S, Karami M, Dalir M, et al. Validity, reliability and factor structure of hepatitis B quality of life questionnaire version 1.0: findings in a large sample of 320 patients. *Arch Iran Med.* (2012) 15:290–7.
  11. Symister P, Friend R. The influence of social support and problematic support on optimism and depression in chronic illness: a prospective study evaluating self-esteem as a mediator. *Health Psychol.* (2003) 22:123–9. doi: 10.1037/0278-6133.22.2.123
  12. Hagström H, Nasr P, Ekstedt M, Hammar U, Stål P, Hultcrantz R, et al. Fibrosis stage but not NASH predicts mortality and time to development of severe liver disease in biopsy-proven NAFLD. *J Hepatol.* (2017) 67:1265–73. doi: 10.1016/j.jhep.2017.07.027
  13. David K, Kowdley KV, Unalp A, Kanwal F, Brunt EM, Schwimmer JB, et al. Quality of life in adults with nonalcoholic fatty liver disease: baseline data from the nonalcoholic steatohepatitis clinical research network. *Hepatology.* (2009) 49:1904–12. doi: 10.1002/hep.22868
  14. Huber Y, Boyle M, Hallsworth K, Tiniakos D, Straub BK, Labenz C, et al. Health-related quality of life in nonalcoholic fatty liver disease associates with hepatic inflammation. *Clin Gastroenterol Hepatol.* (2018) 17:2085–92. doi: 10.1016/j.cgh.2018.12.016
  15. Weinstein AA, Kallman-Price J, Stepanova M, Poms LW, Fang Y, Moon J, et al. Depression in patients with nonalcoholic fatty liver disease and chronic viral hepatitis B and C. *Psychosomatics.* (2011) 52:127–32. doi: 10.1016/j.psym.2010.12.019
  16. Tomeno W, Kawashima K, Yoneda M, Saito S, Ogawa Y, Honda Y, et al. Non-alcoholic fatty liver disease comorbid with major depressive disorder: the pathological features and poor therapeutic efficacy. *J Gastroenterol Hepatol.* (2015) 30:1009–14. doi: 10.1111/jgh.12897
  17. Kim D, Yoo ER, Li AA, Tighe SP, Cholankeril G, Harrison SA, et al. Depression is associated with non-alcoholic fatty liver disease among adults in the United States. *Aliment Pharmacol Ther.* (2019) 50:590–8. doi: 10.1111/apt.15395
  18. Tapper EB, Lai M. Weight loss results in significant improvements in quality of life for patients with nonalcoholic fatty liver disease: a prospective cohort study. *Hepatology.* (2016) 63:1184–9. doi: 10.1002/hep.28416
  19. Schmidt S, Vilagut G, Garin O, Cunillera O, Tresserras R, Brugulat P, et al. Reference guidelines for the 12-Item short-form health survey version 2 based on the catalan general population. *Med Clin.* (2012) 139:613–25. doi: 10.1016/j.medcli.2011.10.024
  20. Ware JE, Kosinski M, Turner-Bowker DM, Gandek B. *How to score Version 2 of the SF-12 Health Survey (With a Supplement Documenting Version 1)*. Lincoln, RI: QualityMetric Incorporated (2002).
  21. Maruish ME. *User's Manual for the SF-12v2 Health Survey*. Lincoln, RI: QualityMetric Incorporated (2012).
  22. Younossi ZM, Stepanova M, Henry L, Racila A, Lam B, Pham HT, et al. A disease-specific quality of life instrument for non-alcoholic fatty liver disease and non-alcoholic steatohepatitis: CLDQ-NAFLD. *Liver Int.* (2017) 37:1209–18. doi: 10.1111/liv.13391
  23. Zigmond AS, Snaith RP. The hospital anxiety and depression scale. *Acta Psychiatr Scand.* (1983) 67:361–70. doi: 10.1111/j.1600-0447.1983.tb09716.x
  24. Caro I, Ibáñez E. La Escala Hospitalaria de Ansiedad y Depresión. Su utilidad práctica en Psicología de la Salud. *Bol Psicol.* (1992) 36:43–69.
  25. Beck AT, Steer RA, Brown GK. *BDI-II. Beck Depression Inventory Manual*. San Antonio, TX: The Psychological Corporation (1996). doi: 10.1037/t00742-000
  26. Beck AT, Steer RA, Brown GK. *Manual BDI-II. Inventario de Depresión de Beck-II (Adaptación española: J. Sanz and C. Vázquez)*. Madrid: Pearson (2011).
  27. Carver CS. You want to measure coping but your protocol's too long: consider the brief COPE. *Int J Behav Med.* (1997) 4:92–100. doi: 10.1207/s15327558ijbm0401\_6
  28. Morán C, Landero R, González MT. A psychometric analysis of the Spanish version of the brief COPE. *Univ Psychol.* (2010) 9:543–52. doi: 10.11144/javeriana.upsy9-2.capy
  29. Zimet GD, Dahlem NW, Zimet SG, Farley GK. The multidimensional scale of perceived social support. *J Pers Assess.* (1988) 52:30–41. doi: 10.1207/s15327752jpa5201\_2
  30. Landeta O, Calvete E. Adaptación y validación de la escala multidimensional de apoyo social percibido. *Ansiedad y Estrés.* (2002) 8:173–82.
  31. Gómez-de-la-Cuesta S, Aller-de-la-Fuente R, Tafur-Sánchez C, Izaola O, García-Sánchez C, Mora N, et al. Analytical, anthropometric and dietary factors associated with the development of fibrosis in patients with nonalcoholic fatty liver disease. *Rev Esp Enferm Dig.* (2018) 110:292–8. doi: 10.17235/reed.2018.5118/2017
  32. Klisic A, Abenavoli L, Fagoonee S, Kavaric N, Kocic G, Ninić A. Older age and HDL-cholesterol as independent predictors of liver fibrosis assessed by BARD score. *Minerva Med.* (2019) 110:191–8. doi: 10.23736/S0026-4806.19.05978-0
  33. De la Revilla L, Fleitas L. Social support and primary health care. *Aten Primaria.* (1991) 8:664–6.
  34. Payne N, Palmer-Kelly E, Pawlik TM. Assessing structure and characteristics of social networks among cancer survivors: impact on general health. *Support Care Cancer.* (2019) 27:3045–51. doi: 10.1007/s00520-018-4620-4
  35. Kasser SL, Kosma M. Social cognitive factors, physical activity, and mobility impairment in adults with multiple sclerosis. *Behav Med.* (2018) 44:306–13. doi: 10.1080/08964289.2017.1368441
  36. Swanson A, Geller J, DeMartini K, Fernandez A, Fehon D. Active coping and perceived social support mediate the relationship between physical health and resilience in liver transplant candidates. *J Clin Psychol Med Settings.* (2018) 25:485–96. doi: 10.1007/s10880-018-9559-6
  37. Newton JL, Jones DE, Henderson E, Kane L, Wilton K, Burt AD, et al. Fatigue in non-alcoholic fatty liver disease (NAFLD) is significant and associates with inactivity and excessive daytime sleepiness but not with liver disease severity or insulin resistance. *Gut.* (2008) 57:807–13. doi: 10.1136/gut.2007.139303
  38. Elliott C, Frith J, Day CP, Jones DEJ, Newton JL. Functional impairment in alcoholic liver disease and non-alcoholic fatty liver disease is significant and persists over 3 years of follow-up. *Dig Dis Sci.* (2013) 58:2383–91. doi: 10.1007/s10620-013-2657-2
  39. Huang X, Liu X, Yu Y. Depression and chronic liver diseases: are there shared underlying mechanisms? *Front Mol Neurosci.* (2017) 10:134. doi: 10.3389/fnmol.2017.00134
  40. Serfaty L. Management of patients with non-alcoholic steatohepatitis (NASH) in real life. *Liver Int.* (2018) 38:52–5. doi: 10.1111/liv.13637

41. Vilar-Gómez E, Martínez-Pérez Y, Calzadilla-Bertot L, Torres-Gonzalez A, Gra-Oramas B, Gonzalez-Fabian L, et al. Weight loss through lifestyle modification significantly reduces features of nonalcoholic steatohepatitis. *Gastroenterology*. (2015) 149:367–78.e5. doi: 10.1053/j.gastro.2015.04.005
42. Silavanich V, Nathisuwan S, Phrommintikul A, Permsuwan U. Relationship of medication adherence and quality of life among heart failure patients. *Heart Lung*. (2019) 48:105–10. doi: 10.1016/j.hrtlng.2018.09.009
43. Dos Santos M, Lange M, Gervais R, Clarisse B, Capel A, Barillet M, et al. Impact of anxio-depressive symptoms and cognitive function on oral anticancer therapies adherence. *Support Care Cancer*. (2019) 27:3573–81. doi: 10.1007/s00520-019-4644-4
44. Corallo F, Bonanno L, Di Cara M, Rifici C, Sessa E, D'Aleo G, et al. Therapeutic adherence and coping strategies in patients with multiple sclerosis: an observational study. *Medicine*. (2019) 98:e16532. doi: 10.1097/MD.00000000000016532
45. Belaiche S, Décaudin B, Dharancy S, Noel C, Odou P, Hazzan M. Factors relevant to medication non-adherence in kidney transplant: a systematic review. *Int J Clin Pharm*. (2017) 39:582–93. doi: 10.1007/s11096-017-0436-4
46. Moscatiello S, Di Luzio R, Bugianesi E, Suppini A, Hickman IJ, Di Domizio S, et al. Cognitive-behavioral treatment of nonalcoholic fatty liver disease: a propensity score-adjusted observational study. *Obesity*. (2011) 19:763–70. doi: 10.1038/oby.2010.254
47. Funuyet-Salas J, Martín-Rodríguez A, Conrad R, Pérez-San-Gregorio MA. Psychological biomarker profile in NAFLD/NASH with advanced fibrosis. In: Romero-Gómez M, editor. *NAFLD and NASH. Biomarkers in Detection, Diagnosis and Monitoring*. Switzerland: Springer Nature (2020). p. 205–23. doi: 10.1007/978-3-030-37173-9\_12
48. Cook N, Geier A, Schmid A, Hirschfeld G, Kautz A, Schattenberg JM, et al. The patient perspectives on future therapeutic options in NASH and patient needs. *Front Med*. (2019) 6:61. doi: 10.3389/fmed.2019.00061
49. Fabricatore AN. Behavior therapy and cognitive-behavioral therapy of obesity: is there a difference? *J Am Diet Assoc*. (2007) 107:92–9. doi: 10.1016/j.jada.2006.10.005
50. Bellentani S, Dalle-Grave R, Suppini A, Marchesini G, Bedogni G, Bugianesi E, et al. Behavior therapy for nonalcoholic fatty liver disease: the need for a multidisciplinary approach. *Hepatology*. (2008) 47:746–54. doi: 10.1002/hep.22009
51. Cooper Z, Fairburn CG, Hawker DM. *Cognitive-behavioral treatment of obesity. A clinician's guide*. New York, NY: The Guilford Press (2003).

**Conflict of Interest:** The authors declare that the research was conducted in the absence of any commercial or financial relationships that could be construed as a potential conflict of interest.

Copyright © 2020 Funuyet-Salas, Pérez-San-Gregorio, Martín-Rodríguez and Romero-Gómez. This is an open-access article distributed under the terms of the Creative Commons Attribution License (CC BY). The use, distribution or reproduction in other forums is permitted, provided the original author(s) and the copyright owner(s) are credited and that the original publication in this journal is cited, in accordance with accepted academic practice. No use, distribution or reproduction is permitted which does not comply with these terms.